



# FREDERICK COUNTY GOVERNMENT

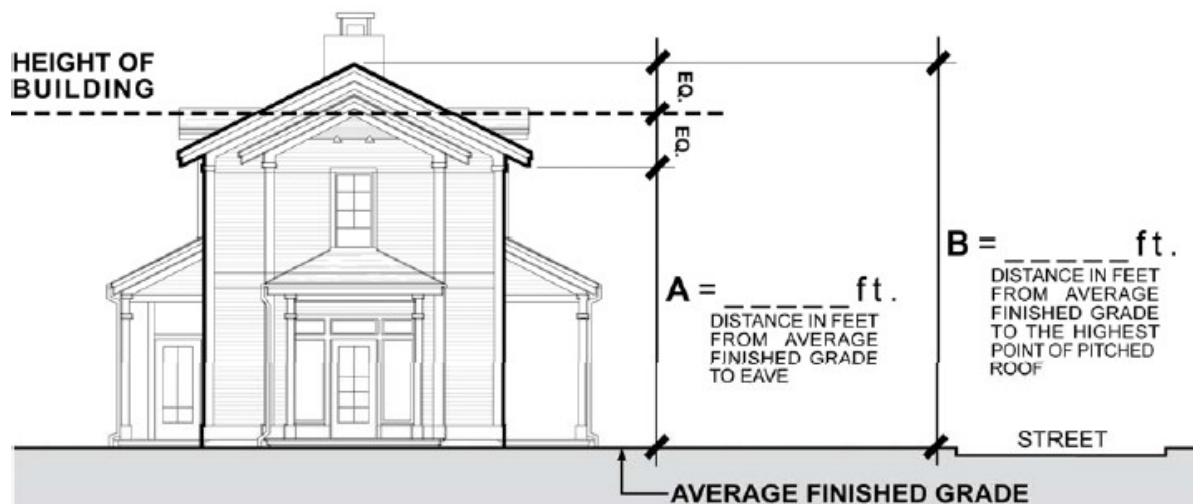
**DIVISION OF PLANNING & PERMITTING**  
Department of Permits & Inspections

Jessica Fitzwater  
County Executive

Deborah A. Carpenter, AICP, Division Director  
Ashlye B. Bonomo, Director

## DETERMINING "HEIGHT OF BUILDING"

The height is measured from the average finished grade ground level along the side of the building nearest the street to either the highest point of a flat roof or to the point one-half the distance between the eaves and the highest point of a pitched roof. (Frederick County Zoning Ordinance Definitions 1-19-11.100)



$$\text{HEIGHT OF BUILDING} = A + [(B - A) / 2]$$

$$= \underline{\hspace{2cm}} + [(\underline{\hspace{2cm}} - \underline{\hspace{2cm}}) / 2]$$

$$\text{HEIGHT OF BUILDING} = \underline{\hspace{4cm}}$$

*Frederick County: Rich History, Bright Future*

30 North Market Street, Frederick, MD 21701 • 301-600-1172 • Fax 301-600-2309  
[www.FrederickCountyMD.gov](http://www.FrederickCountyMD.gov)