

# FY26 Installment Purchase Program Applications



## FREDERICK COUNTY OFFICE OF AGRICULTURE

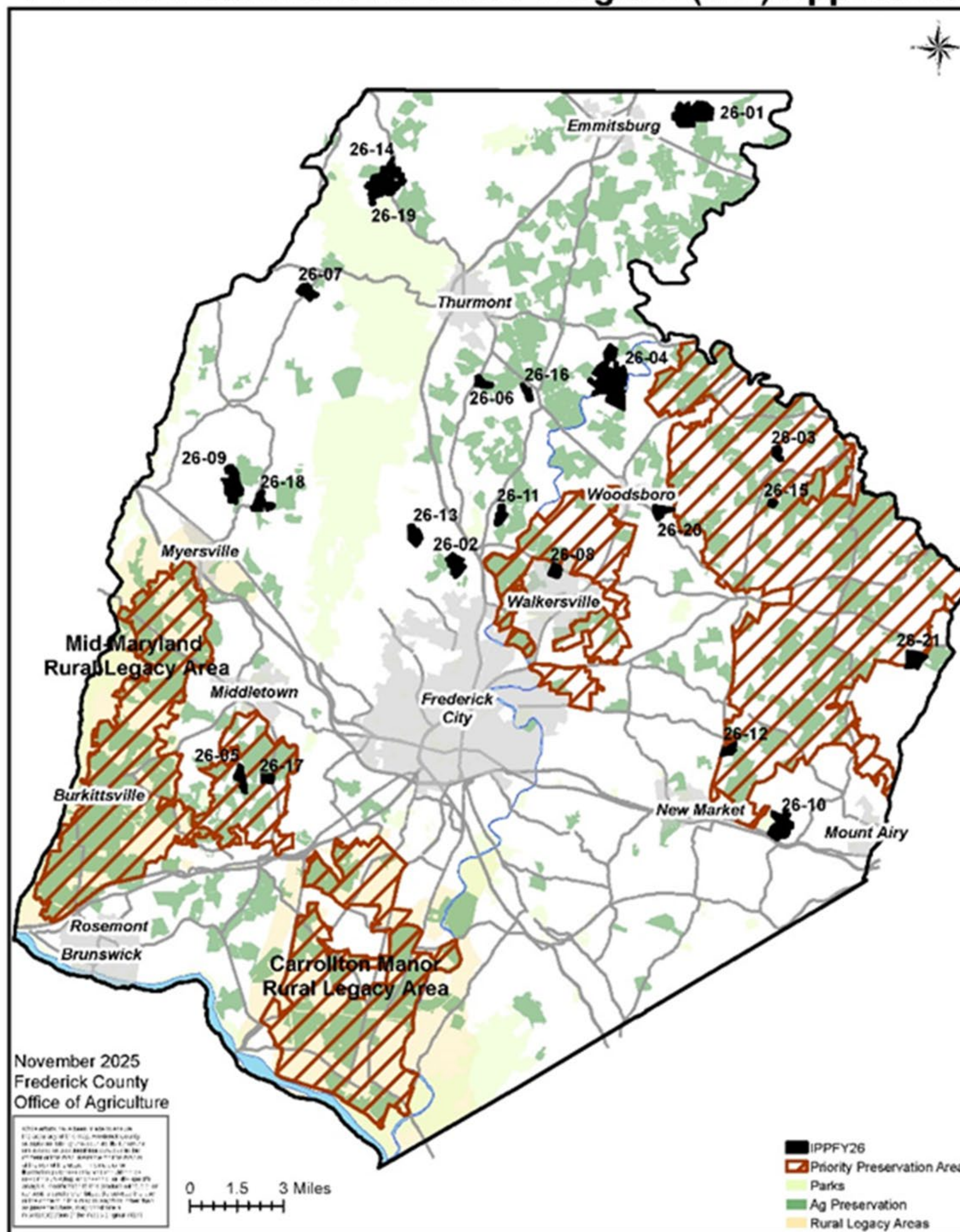
Shannon O'Neil- Agriculture Preservation  
Program Manager

Beth Ahalt- Agriculture Preservation Program Specialist





# Frederick County Agricultural Preservation FY-2026 Installment Purchase Program (IPP) Applicants







## FY-2026 Installment Purchase Program Applications

2023 Ortho

IPPY26

MALPF Easement

ForestResource

MALPF District



**Frederick County, Maryland**  
Office of Agriculture

October, 2025

0 0.175 0.35 0.7 Miles

Projection: NAD 1983 State Plane Maryland FIPS 1900 Feet  
While efforts have been made to ensure the accuracy of this map, Frederick County accepts no liability or responsibility for errors, omissions, or positional inaccuracies in the content of this map. Reliance on this map is at the risk of the user. This map is for illustration purposes only and should not be used for surveying, engineering, or site-specific analysis.  
Printed  
##MAPID##







## FY-2026 Installment Purchase Program Applications

2023 Ortho

IPPFY26

CREP

ForestResource

CreekReLeaf\_Sites



**Frederick County, Maryland**  
Office of Agriculture

October, 2025

0 0.175 0.35 0.7 Miles

Projection: NAD 1983 State Plane Maryland FIPS 1900 Feet  
While efforts have been made to ensure the accuracy of this map, Frederick County accepts no liability or responsibility for errors, omissions, or positional inaccuracies in the content of this map. Reliance on this map is at the risk of the user. This map is for illustration purposes only and should not be used for surveying, engineering, or site-specific analysis.  
Printed  
##MAPID##







## FY-2026 Installment Purchase Program Applications

2023 Ortho

IPPY26

MALPF Easement

PriorityPresAreas

ForestResource



**Frederick County, Maryland**  
Office of Agriculture

October, 2025

0 0.175 0.35 0.7  
Miles

Projection: NAD 1983 State Plane Maryland FIPS 1900 Feet  
While efforts have been made to ensure the accuracy of this map, Frederick County accepts no liability or responsibility for errors, omissions, or positional inaccuracies in the content of this map. Reliance on this map is at the risk of the user. This map is for illustration purposes only and should not be used for surveying, engineering, or site-specific analysis.  
Printed  
##MAPID##

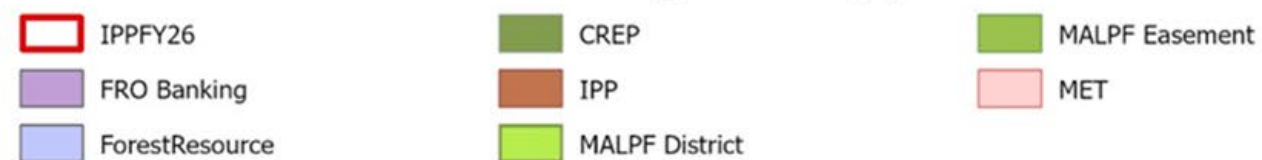






## FY-2026 Installment Purchase Program Applications

2023 Ortho



**Frederick County, Maryland**  
Office of Agriculture

October, 2025

0 0.175 0.35 0.7 Miles

Projection: NAD 1983 State Plane Maryland FIPS 1900 Feet

While efforts have been made to ensure the accuracy of this map, Frederick County accepts no liability or responsibility for errors, omissions, or positional inaccuracies in the content of this map. Reliance on this map is at the risk of the user. This map is for illustration purposes only and should not be used for surveying, engineering, or site-specific analysis. Printed

###MAPID##







## FY-2026 Installment Purchase Program Applications

2023 Ortho

IPPFY26

PriorityPresAreas

ForestResource

IPP

MALPF Easement



**Frederick County, Maryland**  
Office of Agriculture

October, 2025

0 0.175 0.35 0.7 Miles

Projection: NAD 1983 State Plane Maryland FIPS 1900 Feet  
While efforts have been made to ensure the accuracy of this map, Frederick County accepts no liability or responsibility for errors, omissions, or positional inaccuracies in the content of this map. Reliance on this map is at the risk of the user. This map is for illustration purposes only and should not be used for surveying, engineering, or site-specific analysis.  
Printed ##MAPID##







## FY-2026 Installment Purchase Program Applications

2023 Ortho

IPP  
CREP

IPP  
MALPF District

MALPF Easement



**Frederick County, Maryland**  
Office of Agriculture

October, 2025

0 0.175 0.35 0.7 Miles

Projection: NAD 1983 State Plane Maryland FIPS 1900 Feet

While efforts have been made to ensure the accuracy of this map, Frederick County accepts no liability or responsibility for errors, omissions, or positional inaccuracies in the content of this map. Reliance on this map is at the risk of the user. This map is for illustration purposes only and should not be used for surveying, engineering, or site-specific analysis.  
Printed ##MAPID##







## FY-2026 Installment Purchase Program Applications

2023 Ortho

IPPY26

MET

ForestResource

OtherRestrictions



**Frederick County, Maryland**  
Office of Agriculture

October, 2025

0 0.175 0.35 0.7 Miles

Projection: NAD 1983 State Plane Maryland FIPS 1900 Feet  
While efforts have been made to ensure the accuracy of this map, Frederick County accepts no liability or responsibility for errors, omissions, or positional inaccuracies in the content of this map. Reliance on this map is at the risk of the user. This map is for illustration purposes only and should not be used for surveying, engineering, or site-specific analysis.  
Printed: ##MAPID##







## FY-2026 Installment Purchase Program Applications

2023 Ortho

IPP FY26

Parks (All)

PriorityPresAreas

IPP

MALPF Easement



**Frederick County, Maryland**

Office of Agriculture

October, 2025

0 0.175 0.35 0.7 Miles

Projection: NAD 1983 State Plane Maryland FIPS 1900 Feet

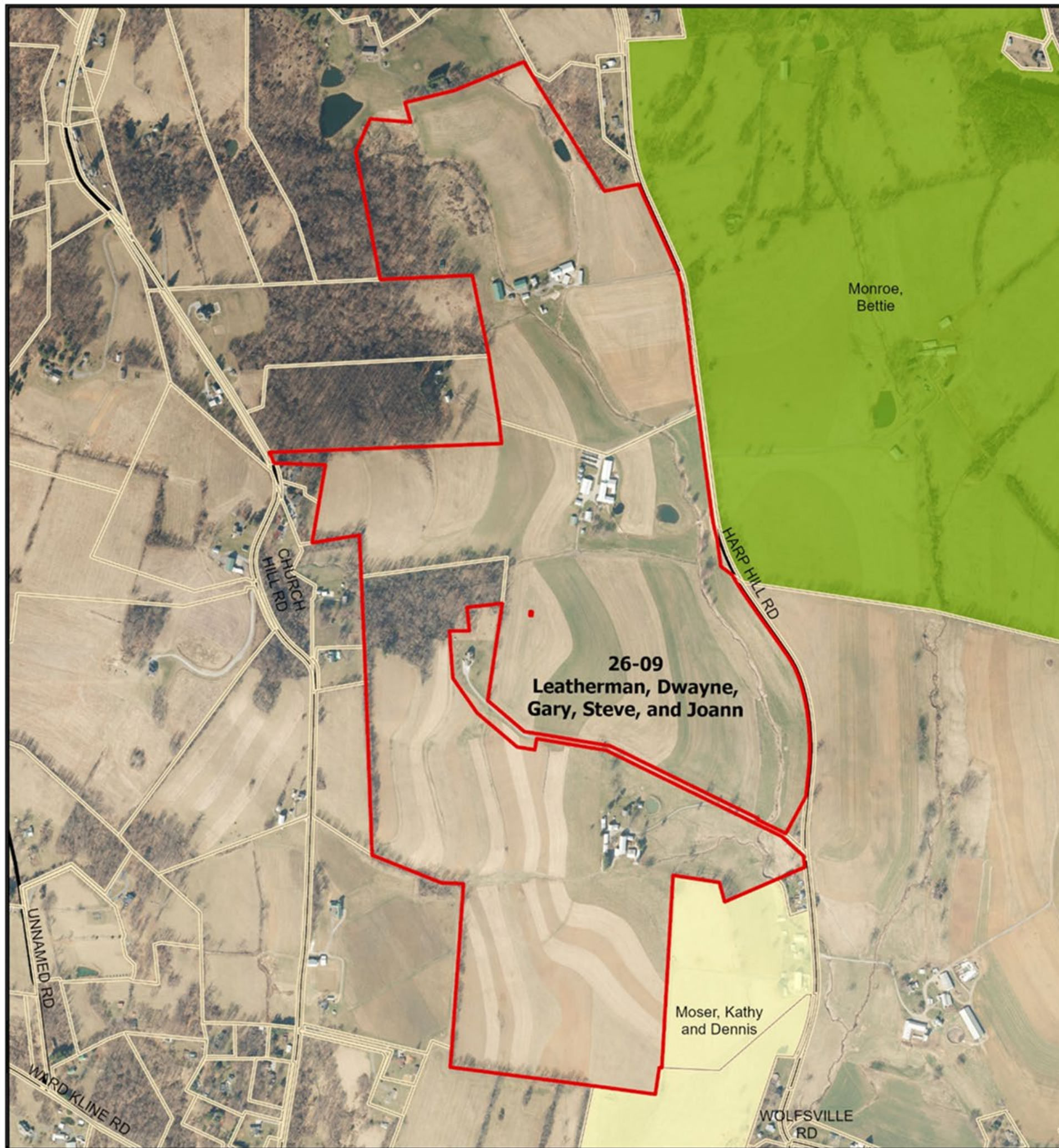
While efforts have been made to ensure the accuracy of this map, Frederick County accepts no liability or responsibility for errors, omissions, or positional inaccuracies in the content of this map. Reliance on this map is at the risk of the user. This map is for illustration purposes only and should not be used for surveying, engineering, or site-specific analysis.

Printed

##MAPID##







## FY-2026 Installment Purchase Program Applications

2023 Ortho

IPPFY26

MALPF Easement

Critical Farms



**Frederick County, Maryland**  
Office of Agriculture

October, 2025

0 0.175 0.35 0.7  
Miles

Projection: NAD 1983 State Plane Maryland FIPS 1900 Feet  
While efforts have been made to ensure the accuracy of this map, Frederick County accepts no liability or responsibility for errors, omissions, or positional inaccuracies in the content of this map. Reliance on this map is at the risk of the user. This map is for illustration purposes only and should not be used for surveying, engineering, or site-specific analysis.  
Printed  
##MAPID##







# FY-2026 Installment Purchase Program Applications

2023 Ortho

- IPPFY26
- Parks (All)

- County Park Boundaries
- PriorityPresAreas

ForestResource



Frederick County, Maryland

Office of Agriculture

October, 2025

0 0.175 0.35 0.7 Miles

Projection: NAD 1983 State Plane Maryland FIPS 1900 Feet

While efforts have been made to ensure the accuracy of this map, Frederick County accepts no liability or responsibility for errors, omissions, or positional inaccuracies in the content of this map. Reliance on this map is at the risk of the user. This map is for illustration purposes only and should not be used for surveying, engineering, or site-specific analysis. Printed

##MAPID##







## FY-2026 Installment Purchase Program Applications

2023 Ortho

IPPFY26

IPP

Critical Farms



**Frederick County, Maryland**  
Office of Agriculture

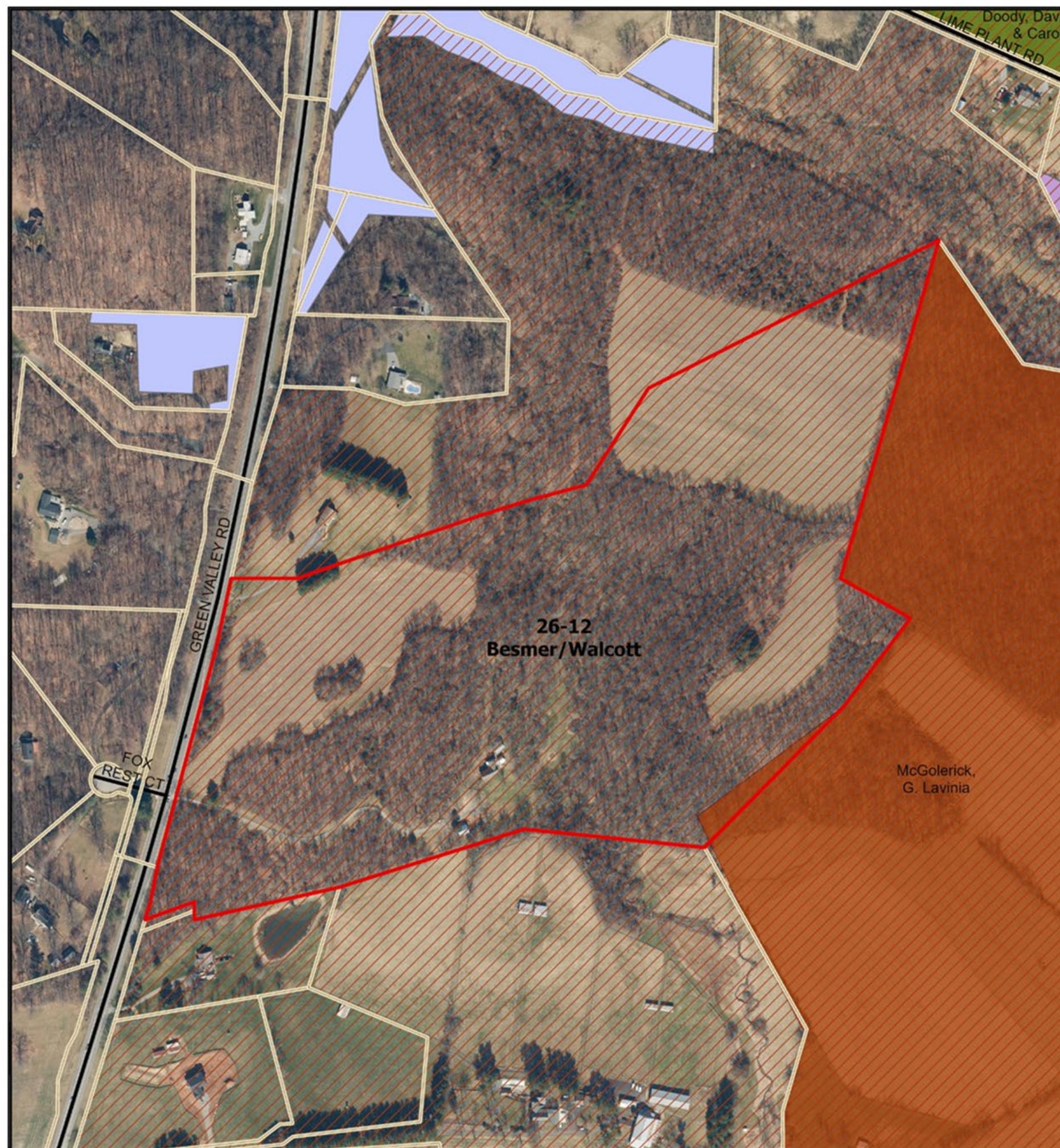
October, 2025

0 0.175 0.35 0.7 Miles

Projection: NAD 1983 State Plane Maryland FIPS 1900 Feet  
While efforts have been made to ensure the accuracy of this map, Frederick County accepts no liability or responsibility for errors, omissions, or positional inaccuracies in the content of this map. Reliance on this map is at the risk of the user. This map is for illustration purposes only and should not be used for surveying, engineering, or site-specific analysis.  
Printed  
##MAPID##







## FY-2026 Installment Purchase Program Applications

2023 Ortho

IPP FY26

Priority Pres Areas

FRO Banking

Forest Resource

CREP

IPP



**Frederick County, Maryland**  
Office of Agriculture

October, 2025

0 0.175 0.35 0.7 Miles

Projection: NAD 1983 State Plane Maryland FIPS 1900 Feet  
While efforts have been made to ensure the accuracy of this map, Frederick County accepts no liability or responsibility for errors, omissions, or positional inaccuracies in the content of this map. Reliance on this map is at the risk of the user. This map is for illustration purposes only and should not be used for surveying, engineering, or site-specific analysis.  
Printed  
##MAPID##







## FY-2026 Installment Purchase Program Applications

2023 Ortho

IPPFY26

ForestResource



**Frederick County, Maryland**  
Office of Agriculture

October, 2025

0 0.175 0.35 0.7 Miles

Projection: NAD 1983 State Plane Maryland FIPS 1900 Feet

While efforts have been made to ensure the accuracy of this map, Frederick County accepts no liability or responsibility for errors, omissions, or positional inaccuracies in the content of this map. Reliance on this map is at the risk of the user. This map is for illustration purposes only and should not be used for surveying, engineering, or site-specific analysis.  
Printed  
##MAPID##







## FY-2026 Installment Purchase Program Applications

2023 Ortho

- IPPFY26
- FRO Banking
- ForestResource

- MALPF District
- MALPF Easement
- Other Governmental



**Frederick County, Maryland**  
Office of Agriculture

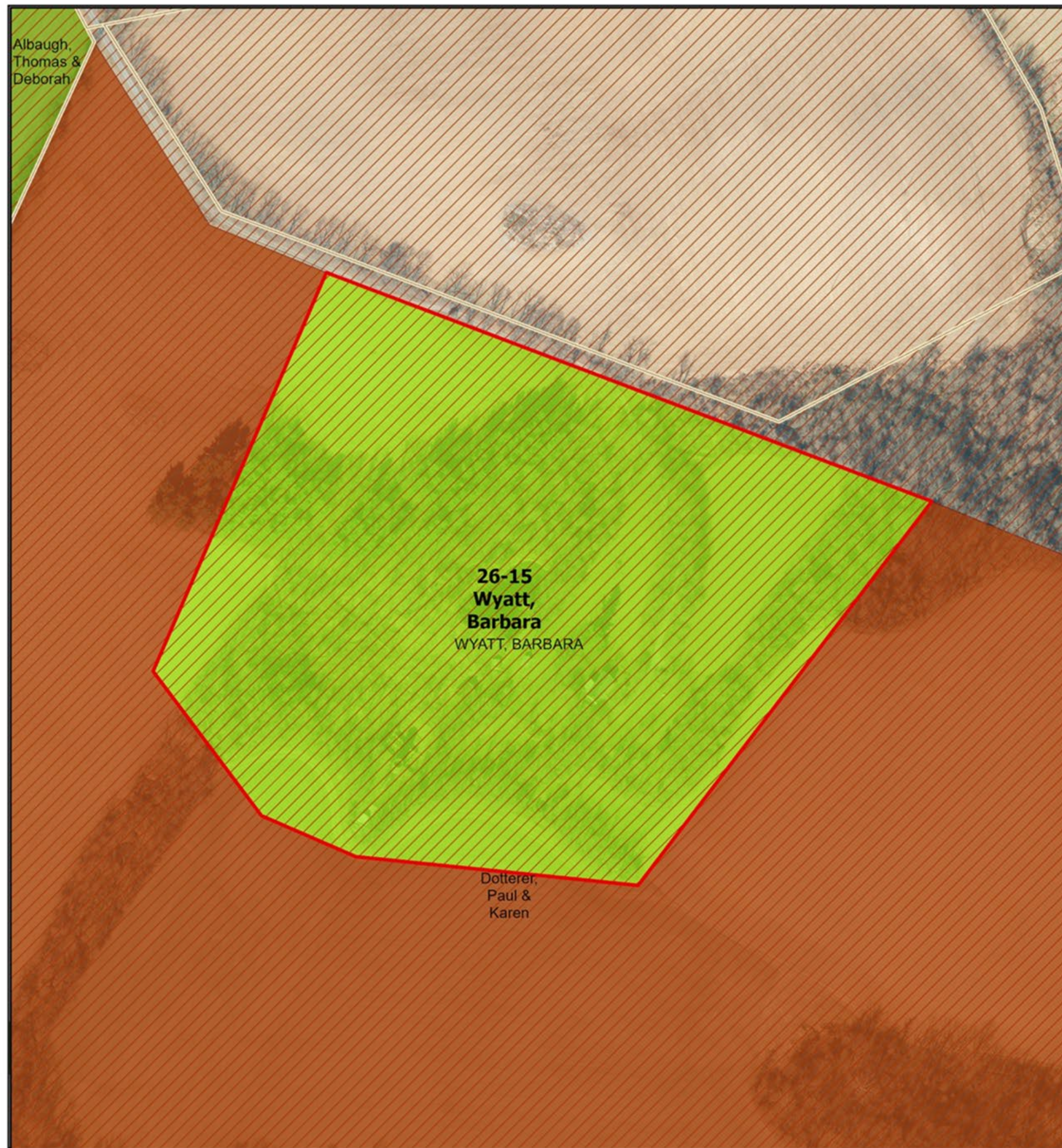
October, 2025

0 0.175 0.35 0.7 Miles

Projection: NAD 1983 State Plane Maryland FIPS 1900 Feet  
While efforts have been made to ensure the accuracy of this map, Frederick County accepts no liability or responsibility for errors, omissions, or positional inaccuracies in the content of this map. Reliance on this map is at the risk of the user. This map is for illustration purposes only and should not be used for surveying, engineering, or site-specific analysis.  
Printed  
##MAPID##







## FY-2026 Installment Purchase Program Applications

2023 Ortho

IPPFY26

PriorityPresAreas

IPP

MALPF District

MALPF Easement



**Frederick County, Maryland**  
Office of Agriculture

October, 2025

0 0.175 0.35 0.7 Miles

Projection: NAD 1983 State Plane Maryland FIPS 1900 Feet  
While efforts have been made to ensure the accuracy of this map, Frederick County accepts no liability or responsibility for errors, omissions, or positional inaccuracies in the content of this map. Reliance on this map is at the risk of the user. This map is for illustration purposes only and should not be used for surveying, engineering, or site-specific analysis.  
Printed ##MAPID##







## FY-2026 Installment Purchase Program Applications

2023 Ortho

IPPFY26  
FFP

MALPF Easement



**Frederick County, Maryland**  
Office of Agriculture

October, 2025

0 0.175 0.35 0.7 Miles

Projection: NAD 1983 State Plane Maryland FIPS 1900 Feet

While efforts have been made to ensure the accuracy of this map, Frederick County accepts no liability or responsibility for errors, omissions, or positional inaccuracies in the content of this map. Reliance on this map is at the risk of the user. This map is for illustration purposes only and should not be used for surveying, engineering, or site-specific analysis.  
Printed ##MAPID##







## FY-2026 Installment Purchase Program Applications

2023 Ortho

IPPFY26

MALPF Easement

PriorityPresAreas

IPP



**Frederick County, Maryland**  
Office of Agriculture

October, 2025

0 0.175 0.35 0.7 Miles

Projection: NAD 1983 State Plane Maryland FIPS 1900 Feet

While efforts have been made to ensure the accuracy of this map, Frederick County accepts no liability or responsibility for errors, omissions, or positional inaccuracies in the content of this map. Reliance on this map is at the risk of the user. This map is for illustration purposes only and should not be used for surveying, engineering, or site-specific analysis.  
Printed  
##MAPID##







## FY-2026 Installment Purchase Program Applications

2023 Ortho

- IPPFY26
- IPP
- MALPF Easement

Next Generation



**Frederick County, Maryland**  
Office of Agriculture

October, 2025

0 0.175 0.35 0.7  
Miles

Projection: NAD 1983 State Plane Maryland FIPS 1900 Feet  
While efforts have been made to ensure the accuracy of this map, Frederick County accepts no liability or responsibility for errors, omissions, or positional inaccuracies in the content of this map. Reliance on this map is at the risk of the user. This map is for illustration purposes only and should not be used for surveying, engineering, or site-specific analysis.  
Printed  
##MAPID##







## FY-2026 Installment Purchase Program Applications

2023 Ortho

IPPFY26

Parks (All)

ForestResource

CreekReLeaf\_Sites

MALPF District

MALPF Easement

Other Governmental



**Frederick County, Maryland**  
Office of Agriculture

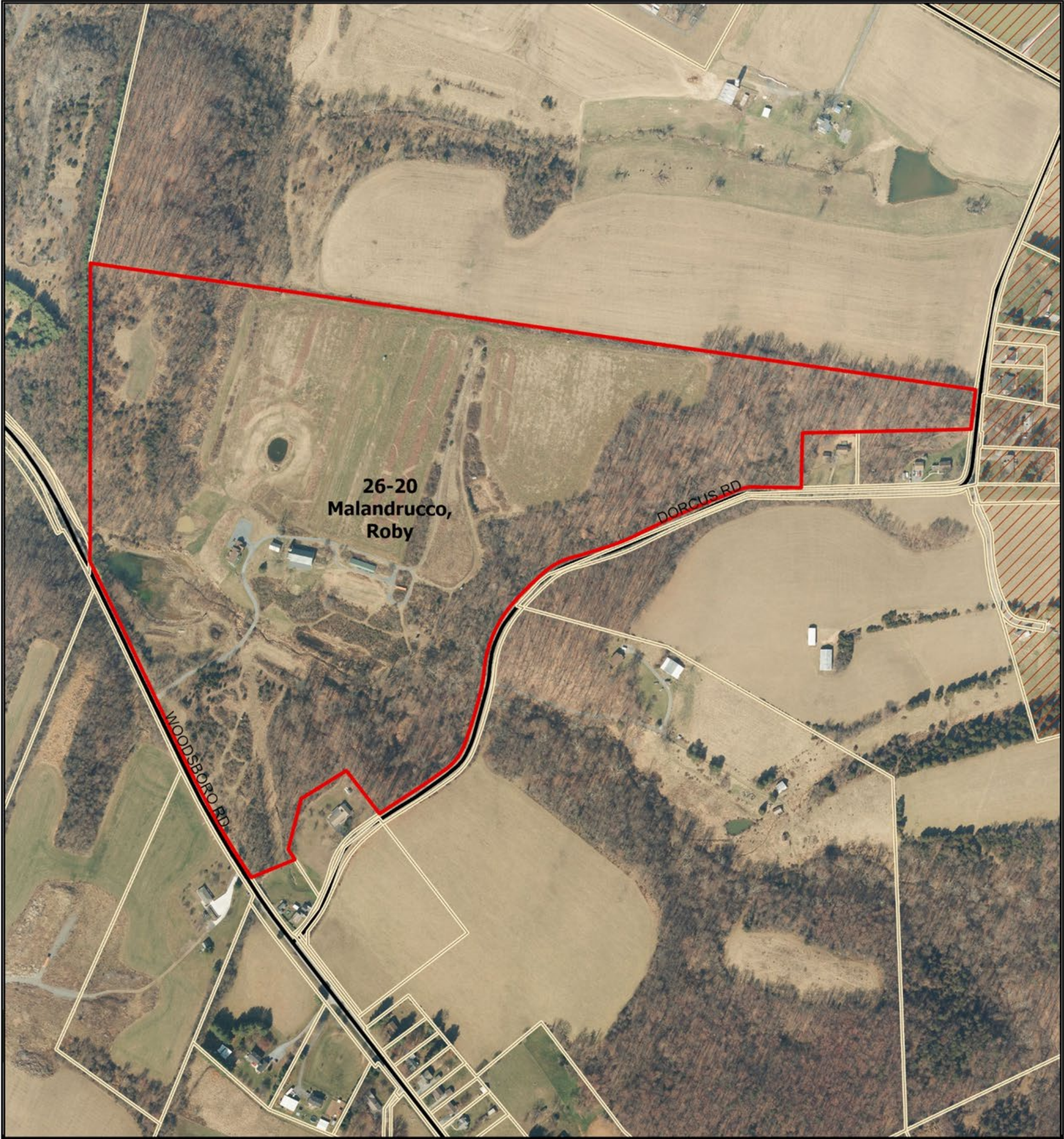
October, 2025

0 0.175 0.35 0.7  
Miles

Projection: NAD 1983 State Plane Maryland FIPS 1900 Feet  
While efforts have been made to ensure the accuracy of this map, Frederick County accepts no liability or responsibility for errors, omissions, or positional inaccuracies in the content of this map. Reliance on this map is at the risk of the user. This map is for illustration purposes only and should not be used for surveying, engineering, or site-specific analysis.  
Printed  
##MAPID##









**FY-2026 Installment Purchase Program Applications**

2023 Ortho

-  IPPFY26
-  PriorityPresAreas



**Frederick County, Maryland**  
Office of Agriculture

October, 2025

0 0.175 0.35 0.7  
Miles

Projection: NAD 1983 State Plane Maryland FIPS 1900 Feet

While efforts have been made to ensure the accuracy of this map, Frederick County accepts no liability or responsibility for errors, omissions, or positional inaccuracies in the content of this map. Reliance on this map is at the risk of the user. This map is for illustration purposes only and should not be used for surveying, engineering, or site-specific analysis.  
Printed ##MAPID##







## FY-2026 Installment Purchase Program Applications

2023 Ortho

 IPPFY26

 PriorityPresAreas

 ForestResource

 CREP

 MALPF Easement



**Frederick County, Maryland**  
Office of Agriculture

October, 2025

0 0.175 0.35 0.7 Miles

Projection: NAD 1983 State Plane Maryland FIPS 1900 Feet  
While efforts have been made to ensure the accuracy of this map, Frederick County accepts no liability or responsibility for errors, omissions, or positional inaccuracies in the content of this map. Reliance on this map is at the risk of the user. This map is for illustration purposes only and should not be used for surveying, engineering, or site-specific analysis.  
Printed  
##MAPID##





# Staff Recommendation:

Staff recommends approval of applications 26-01 through 26-21 as listed in the staff report.

