



FREDERICK COUNTY GOVERNMENT
OFFICE OF THE COUNTY EXECUTIVE

Jessica Fitzwater
County Executive

News Release

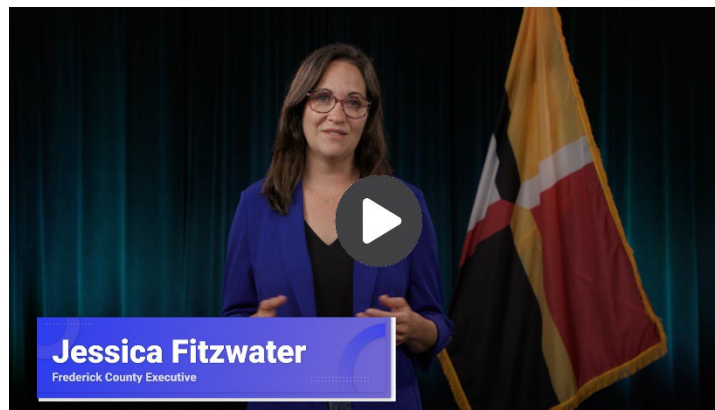
FOR IMMEDIATE RELEASE:
JULY 7, 2025

Overlay Map for Data Centers Unveiled

Proposal Would Restrict Development and Limit Sprawl

FREDERICK, Md. – Frederick County Executive Jessica Fitzwater today released a proposed map that will significantly limit where data centers can be developed within the county. The overlay is part of a broader effort to regulate data center growth while preserving the community's quality of life and preventing urban sprawl.

The County Executive explains the map in this video statement:



<https://www.youtube.com/watch?v=lgnnMvXkmLU>

Excerpt: "Frederick County is recognized nationally as a leader for how we are regulating the data center industry. We've built strong protections for our residents into our laws, while allowing for investment and development that will create good-paying jobs and generate revenue for the county. ... We won't let the industry sprawl across our community as it did in Northern Virginia."

The proposed map limits data center development to specific areas around the former Eastalco aluminum plant north of Adamstown. The map will be reviewed by the Planning Commission on July 16. Learn more by visiting www.FrederickCountyMD.gov/DataCenters.

###

CONTACT: [Vivian Laxton](#), Director
Office of Communications and Public Engagement
301-600-1315

Frederick County, Maryland does not discriminate on the basis of race, color, religion, national origin, sex, age, marital status, disability, familial status, gender identity, sexual orientation, or source of income.