

Frederick County Green Infrastructure Plan  
Public Outreach Summary

**Visioning & Values Online Survey (Responses as of January 27, 2026)**

<b>What values (or themes) are most important to you or your organization for inclusion in the Green Infrastructure Plan to help the plan achieve the Vision outlined in the LFMP, the Transition Report, and the Work Program?</b>	<b>Is there anything you or your organization would like to be able to do from an infrastructure, conservation, or recreation standpoint in Frederick County that you are not able to do at this time?</b>	<b>What are the greatest risks to green infrastructure in Frederick County right now?</b>	<b>At what scale should Frederick County work to conserve or restore green infrastructure assets? Should efforts be spread broadly, in a County-wide effort, or should they be focused on targeted areas within the County?</b>
Without question, a trail network. We should build infrastructure both for recreation and transportation that is safe, resilient, and sustainable to encourage residents to use active transportation to get from point A to point B. It is very unsafe to ride a bike or walk on rural roads around the County and I believe a comprehensive trail network should be designed and built to give people more options, keep residents healthier and wealthier, and contribute to overall well-being in addition to being cheaper and easier on the climate.	Feel safe bike riding and walking on rural routes throughout much of the County.	Lack of prioritization and funding. I think this is an encouraging start, but the devil is in the details. I hope that a comprehensive trail network will be fully developed by this group.	Yes - I think both approaches are needed, maybe with a "master" project plan spread broadly that then has yearly plans that focuses on targeted areas.

Frederick County Green Infrastructure Plan  
Public Outreach Summary

**Visioning & Values Online Survey (Responses as of January 27, 2026)**

<b>What values (or themes) are most important to you or your organization for inclusion in the Green Infrastructure Plan to help the plan achieve the Vision outlined in the LFMP, the Transition Report, and the Work Program?</b>	<b>Is there anything you or your organization would like to be able to do from an infrastructure, conservation, or recreation standpoint in Frederick County that you are not able to do at this time?</b>	<b>What are the greatest risks to green infrastructure in Frederick County right now?</b>	<b>At what scale should Frederick County work to conserve or restore green infrastructure assets? Should efforts be spread broadly, in a County-wide effort, or should they be focused on targeted areas within the County?</b>
Humans are part of the interconnected web of existence. We are part of nature, not separate from it. See "Nature's Services, Societal Dependence on Natural Systems", Gretchen Daily, editor, Island Press, 1997.	We would like to know that, in spite of unprecedented growth pressure, the County has protected our water sources, food sources and biodiversity, with local natural solutions. For example, site scale infrastructure projects such as wetland, grassland and forest system restoration increase natural habitat and produce root systems that maintain healthy soils, which, in turn produce infiltration rates that reduce runoff and recharge ground water aquifers. Access to nature provides scientifically proven benefits to psychological health. People prefer living near green space.	Unprecedented population growth, economic pressure, and a lack of environmental awareness. Business-as-usual thinking, in the midst of climate change and biodiversity loss. Lack of imagination and foresight. An economic system that sees nature as a commodity, rather than as our life support system.	We need to view Frederick County within the context of State, National and International efforts to address climate change and biodiversity loss. Can we envision happy, secure lives for our friends, families and neighbors, given future droughts, storms, food and supply chain issues? What about loss of pollinators and keystone species like beavers, whose dams enable water to sink into aquifers and mitigate flooding? What needs to happen to ensure a safe water supply?

Frederick County Green Infrastructure Plan  
Public Outreach Summary

**Visioning & Values Online Survey (Responses as of January 27, 2026)**

<b>What values (or themes) are most important to you or your organization for inclusion in the Green Infrastructure Plan to help the plan achieve the Vision outlined in the LFMP, the Transition Report, and the Work Program?</b>	<b>Is there anything you or your organization would like to be able to do from an infrastructure, conservation, or recreation standpoint in Frederick County that you are not able to do at this time?</b>	<b>What are the greatest risks to green infrastructure in Frederick County right now?</b>	<b>At what scale should Frederick County work to conserve or restore green infrastructure assets? Should efforts be spread broadly, in a County-wide effort, or should they be focused on targeted areas within the County?</b>
Basically I value living in a way that does not destroy the possibility of flora and Fauna to survive. Climate Chaos will end this unusual biological niche that both wildlife and Humans need to survive. I value keeping it going in Frederick County.	Despite human development and the changes in habitat it creates, I value building wildlife corridors that are preserved from development. I see this as a way to maintain health soils, water, food and air and mental health.	Unprecedented population growth, economic pressure, and a lack of environmental awareness. Business-as-usual thinking, in the midst of climate change and biodiversity loss. Lack of imagination and foresight. An economic system that sees nature as a commodity, rather than as our life support system.	E.O. Wilson, Biologist, has called for half the earth to be set aside for natural life even in a changing climate. That could be a goal of wildlife preserves in Frederick County. We need to view Frederick County within the context of State, National and International efforts to address climate chaos and biodiversity loss. Can we envision happy, secure lives for our friends, families and neighbors, given future droughts, storms, food and supply chain issues?
I don't know what the LFMP is	Compost without paying for it	Denialism	No answer

Frederick County Green Infrastructure Plan  
Public Outreach Summary

**Visioning & Values Online Survey (Responses as of January 27, 2026)**

<b>What values (or themes) are most important to you or your organization for inclusion in the Green Infrastructure Plan to help the plan achieve the Vision outlined in the LFMP, the Transition Report, and the Work Program?</b>	<b>Is there anything you or your organization would like to be able to do from an infrastructure, conservation, or recreation standpoint in Frederick County that you are not able to do at this time?</b>	<b>What are the greatest risks to green infrastructure in Frederick County right now?</b>	<b>At what scale should Frederick County work to conserve or restore green infrastructure assets? Should efforts be spread broadly, in a County-wide effort, or should they be focused on targeted areas within the County?</b>
Reducing greenhouse gasses is very important. Methods preferred are enhancing the natural environment, such as by planting and managing native trees and forests.	It would be good to have public electric vehicle chargers as easily available and at similar mark-up costs to gas stations. EV public chargers are not that easy to find, and the cost of the electricity is usually 5 times the cost of electricity purchased from the power companies like Potomac Edison.	The majority of the population ignores or doesn't understand the benefits of green infrastructure.	Conserving and restoring doesn't go far enough - the County should prioritize establishing new, enhanced, and expanded green infrastructure.

Frederick County Green Infrastructure Plan  
Public Outreach Summary

**Visioning & Values Online Survey (Responses as of January 27, 2026)**

<b>What values (or themes) are most important to you or your organization for inclusion in the Green Infrastructure Plan to help the plan achieve the Vision outlined in the LFMP, the Transition Report, and the Work Program?</b>	<b>Is there anything you or your organization would like to be able to do from an infrastructure, conservation, or recreation standpoint in Frederick County that you are not able to do at this time?</b>	<b>What are the greatest risks to green infrastructure in Frederick County right now?</b>	<b>At what scale should Frederick County work to conserve or restore green infrastructure assets? Should efforts be spread broadly, in a County-wide effort, or should they be focused on targeted areas within the County?</b>
Some changes are inevitable, but to maximum extent possible large trees and the number of active farms in the County should remain untouched by clusters of residential homes, or new large multifamily, commercial, industrial, or government (R, C, I, or G) buildings. In other words, the "workers and work places" initiative should not attempt to rezone farmland or encourage the existing owners to sell unless the owners had first sought such offers because they want to move and know of no one who wants to buy the land and continue using it for agriculture.	No, there is not.	1. Rezoning agricultural and rural land 2. Allowing clusters of residential homes or large R, C, I, or G buildings in the area between I-270 and the Monocacy River (i.e., the area that many folks think of as the "Sugarloaf Protected Area").	County-wide
Basics like clean air and clean water, reduction and eventual elimination of greenhouse gases.	Enjoy cooler temperatures, and fewer extreme weather events.	Costs, development pressures, increasing population.	County-wide efforts where feasible.

Frederick County Green Infrastructure Plan  
Public Outreach Summary

**Visioning & Values Online Survey (Responses as of January 27, 2026)**

<b>What values (or themes) are most important to you or your organization for inclusion in the Green Infrastructure Plan to help the plan achieve the Vision outlined in the LFMP, the Transition Report, and the Work Program?</b>	<b>Is there anything you or your organization would like to be able to do from an infrastructure, conservation, or recreation standpoint in Frederick County that you are not able to do at this time?</b>	<b>What are the greatest risks to green infrastructure in Frederick County right now?</b>	<b>At what scale should Frederick County work to conserve or restore green infrastructure assets? Should efforts be spread broadly, in a County-wide effort, or should they be focused on targeted areas within the County?</b>
---	--	---	---

Better transit options to condense the development needed to transport our residents. This would look like building bus lanes, bike lanes, and encouraging the use of MARC and TransIT over traditional car reliance. These alternatives have less of a negative impact on the air quality and green spaces we so dearly value here in Frederick.

Get around more by bus I live just outside of the regular Frederick city bus network, and I could almost use it, but not really in any practical way. There's been so much development directly to the east of Frederick City, where I live, and yet the bus network doesn't reach the new thousands of residents just down the road from Spring Ridge. I would love to use a bus to get downtown, so I wouldn't need to rely on my car to travel that distance.

Low-density housing developments swallowing open fields and farms. It's so sad to see, and results in the death and displacement of so many of the animals that called it home. It is also putting more CO2 into the air, from increased car travel as new development have next to no car alternatives.

Not sure. Maybe the region on the 270 corridor and those feeder areas, because open land is being developed most aggressively there.

## **Visioning & Values Exercise (Thurmont Open House held March 13, 2025)**

<b>What values (or themes) are most important to you or your organization for inclusion in the Green Infrastructure Plan to help the plan achieve the Vision outlined in the LFMP, the Transition Report, and the Work Program?</b>	<b>Is there anything you or your organization would like to be able to do from an infrastructure, conservation, or recreation standpoint in Frederick County that you are not able to do at this time?</b>	<b>What are the greatest risks to green infrastructure in Frederick County right now?</b>	<b>At what scale should Frederick County work to conserve or restore green infrastructure assets? Should efforts be spread broadly, in a County-wide effort, or should they be focused on targeted areas within the County?</b>	<b>Do you have any additional feedback for the Livable Frederick Planning &amp; Design Office regarding the implementation of a Green Infrastructure Plan for Frederick County?</b>
---	--	---	---	---

No responses received yet.

## **Asset and Risk Mapping Exercise (Thurmont Open House held March 13, 2025)**

**Map Scan**

**Additional Notes**

No responses received yet.



### **Network Protocol Exercise (Thurmont Open House held March 13, 2025)**

**Are there any established, mapped networks for green infrastructure, recreational resources, or multi-modal transit and the local, state, or federal level that might serve as a basis for one or more aspects of the Green Infrastructure Network?**

**Are there any specific criteria or conditions of land use or land ownership that may result in the need to exclude certain land features or properties from the Green Infrastructure Network?**

**Are there any specific criteria or conditions of land use or land ownership that may result in the need to include certain land features or properties from the Green Infrastructure Network?**

**Do you have any additional feedback for the Livable Frederick Planning & Design Office regarding the development of a Green Infrastructure Network Protocol?**

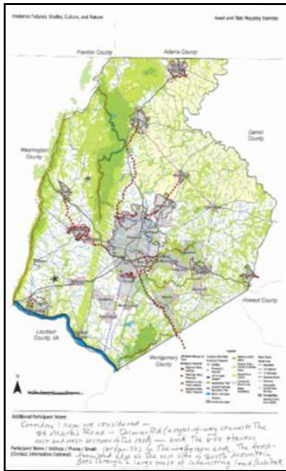
No responses received yet.

### **Visioning & Values Exercise (Middletown Open House held March 26, 2025)**

<b>What values (or themes) are most important to you or your organization for inclusion in the Green Infrastructure Plan to help the plan achieve the Vision outlined in the LFMP, the Transition Report, and the Work Program?</b>	<b>Is there anything you or your organization would like to be able to do from an infrastructure, conservation, or recreation standpoint in Frederick County that you are not able to do at this time?</b>	<b>What are the greatest risks to green infrastructure in Frederick County right now?</b>	<b>At what scale should Frederick County work to conserve or restore green infrastructure assets? Should efforts be spread broadly, in a County-wide effort, or should they be focused on targeted areas within the County?</b>	<b>Do you have any additional feedback for the Livable Frederick Planning &amp; Design Office regarding the implementation of a Green Infrastructure Plan for Frederick County?</b>
Hard question. I'd like to see an emphasis, though, on implementation of renewable energy sources. Solar panel farms are a step in the right direction.	N/A	Increasing population, but appreciate efforts to provide affordable housing that may not be available elsewhere.	I would say they should be focused on targeted areas within the County. As a practical matter it may be idfficult to address the green infrastructure needs for the entire county.	Appreciate all you do. Until your presentation tonight, I wasn't even aware you existed.

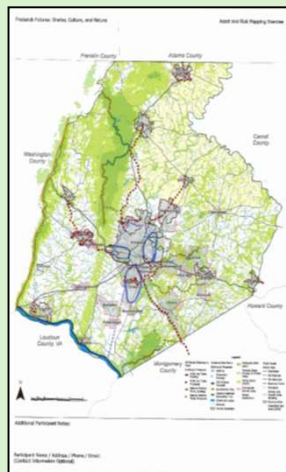
## Asset and Risk Mapping Exercise (Middletown Open House held March 26, 2025)

### Map Scan



### Additional Notes

Corridors I hope are considered - St. Mark's Road - Delauter Road (a right-of-way connects the east and west sections of the road) - and the Fox Haven properties in the Jefferson Area. The forest farmland edge at the east side of South Mountain goes through a large tract of interesting land/habitats.



N/A

## **Network Protocol Exercise (Middletown Open House held March 26, 2025)**

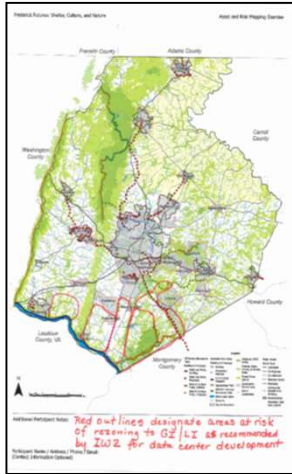
<b>Are there any established, mapped networks for green infrastructure, recreational resources, or multi-modal transit and the local, state, or federal level that might serve as a basis for one or more aspects of the Green Infrastructure Network?</b>	<b>Are there any specific criteria or conditions of land use or land ownership that may result in the need to exclude certain land features or properties from the Green Infrastructure Network?</b>	<b>Are there any specific criteria or conditions of land use or land ownership that may result in the need to include certain land features or properties from the Green Infrastructure Network?</b>	<b>Do you have any additional feedback for the Livable Frederick Planning &amp; Design Office regarding the development of a Green Infrastructure Network Protocol?</b>
Sorry, I don't know.	Superfund sites?	Properties that are ideal for constructing wildlife crossings over or under roads/highways based on migration patterns, and expected northern migrations of animals due to climate change, properties that have threatened or endangered species.	The more connectivity of green space, the better - these connected corridors should span the entire county (not be islands) and connect to corridors in adjacent counties and states. Infrastructure plans should be coordinated at the local, regional, and interstate levels

### **Visioning & Values Exercise (Urbana Open House held April 7, 2025)**

<b>What values (or themes) are most important to you or your organization for inclusion in the Green Infrastructure Plan to help the plan achieve the Vision outlined in the LFMP, the Transition Report, and the Work Program?</b>	<b>Is there anything you or your organization would like to be able to do from an infrastructure, conservation, or recreation standpoint in Frederick County that you are not able to do at this time?</b>	<b>What are the greatest risks to green infrastructure in Frederick County right now?</b>	<b>At what scale should Frederick County work to conserve or restore green infrastructure assets? Should efforts be spread broadly, in a County-wide effort, or should they be focused on targeted areas within the County?</b>	<b>Do you have any additional feedback for the Livable Frederick Planning &amp; Design Office regarding the implementation of a Green Infrastructure Plan for Frederick County?</b>
Green matters for infiltration, groundwater supplies, creek baseflows.	N/A	Uncontrolled, everything-goes development.	County-wide effort, but targeting will be necessary due to a [limited budget].	N/A

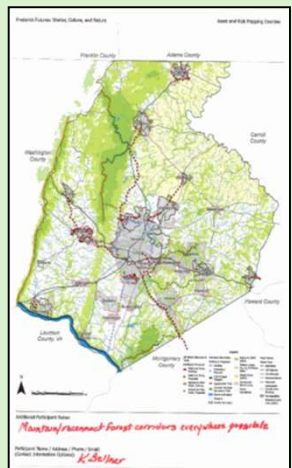
## Asset and Risk Mapping Exercise (Middletown Open House held March 26, 2025)

### Map Scan



### Additional Notes

Red outlines designate areas at risk of rezoning to GI/LI as recommended by IW2 for data center development.



## Asset and Risk Mapping Exercise (Middletown Open House held March 26, 2025)

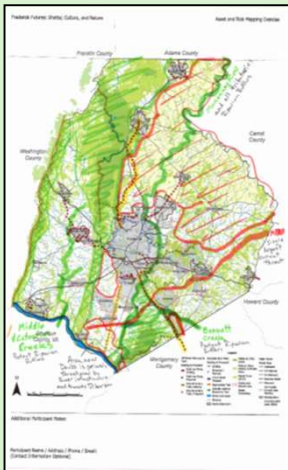
### Map Scan

### Additional Notes

N/A



N/A



## **Network Protocol Exercise (Urbana Open House held April 7, 2025)**

<b>Are there any established, mapped networks for green infrastructure, recreational resources, or multi-modal transit and the local, state, or federal level that might serve as a basis for one or more aspects of the Green Infrastructure Network?</b>	<b>Are there any specific criteria or conditions of land use or land ownership that may result in the need to exclude certain land features or properties from the Green Infrastructure Network?</b>	<b>Are there any specific criteria or conditions of land use or land ownership that may result in the need to include certain land features or properties from the Green Infrastructure Network?</b>	<b>Do you have any additional feedback for the Livable Frederick Planning &amp; Design Office regarding the development of a Green Infrastructure Network Protocol?</b>
[The City of Frederick's] Form-Based Code has some, much more in [the] South Frederick Corridors Action Plan	N/A	Contiguous forest tracts, rural and urban, park to park connectivity, urban stormwater green network, all connected for water flow and infiltration.	IW2 recommendations - must be revised for green infrastructure
I'm not aware of these.	Exclude - If protected by law.	Include - if there is a need for shade trees to offset the heat of summer from concrete and exhaust.	We love Frederick Parks!
Not sure of your definition of green infrastructure, but my definition includes green, lower water quantity and quality, green transportation, green buildings, & green transportation. Also important are green farming, green ... practices, green landscaping ...	Protected lands (wetlands and ag preservation), high quality soil class, historic properties, and viewsheds	N/A	N/A