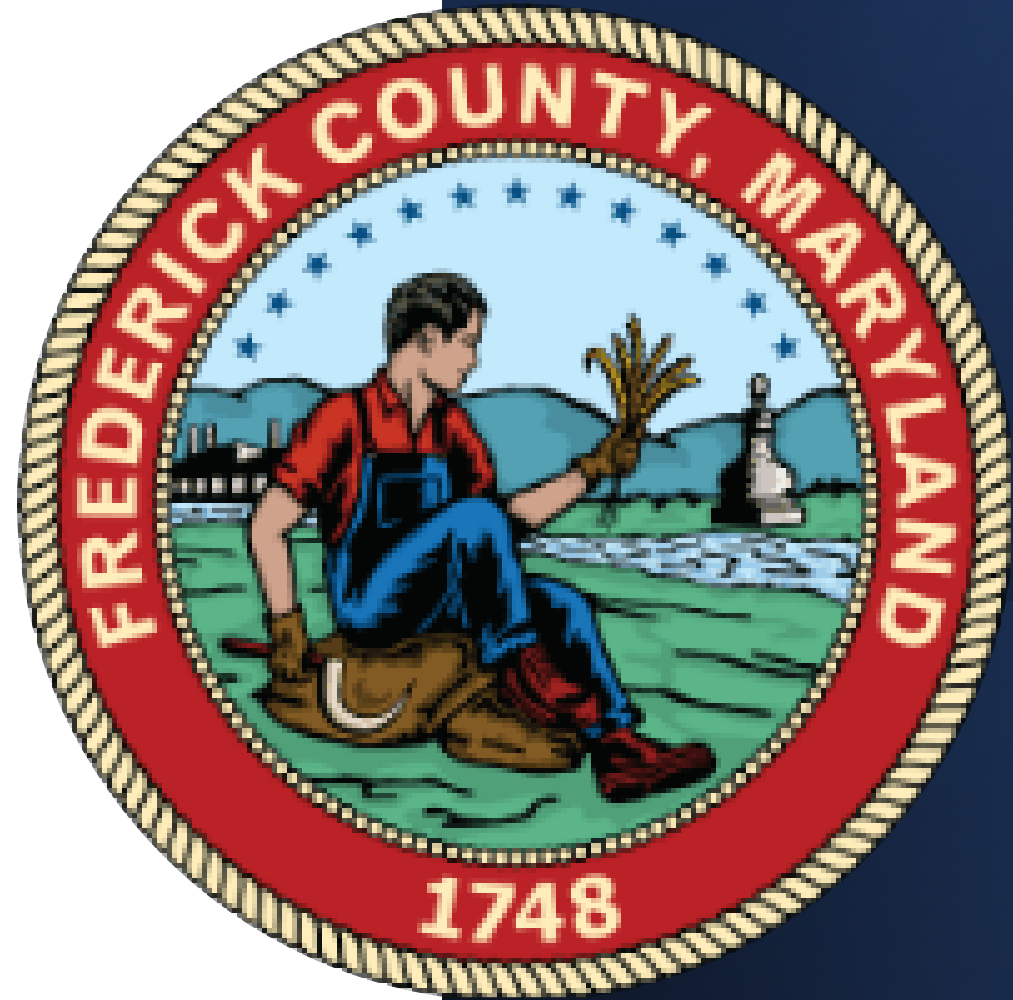


Rural Broadband in Frederick County

Jeff Chamberlain

Manager, Broadband and
Enterprise Projects



Comparative Issues

Commercial Data Center Services

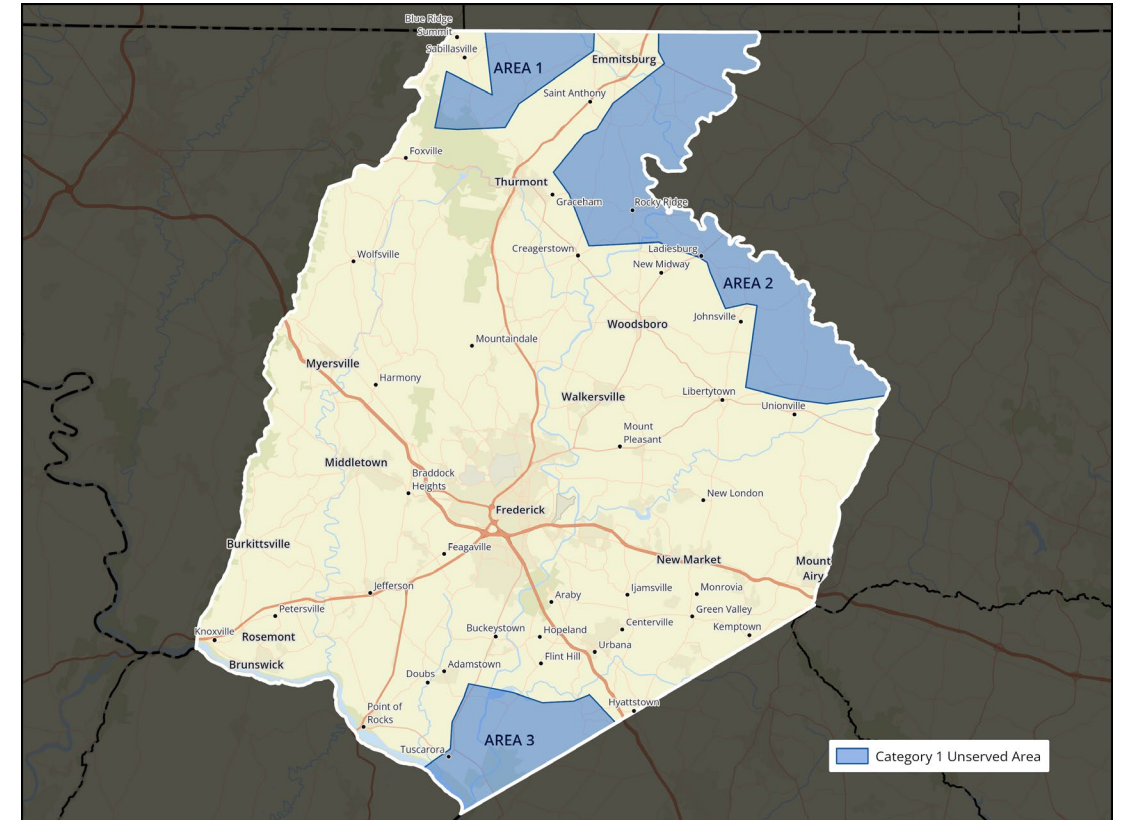
- Provide compute, storage, and application services to clients (platform or infrastructure as a service)
- Colocation and technology disaster recovery services
- Commercial Internet and connectivity (bandwidth) services

Rural Broadband Challenges

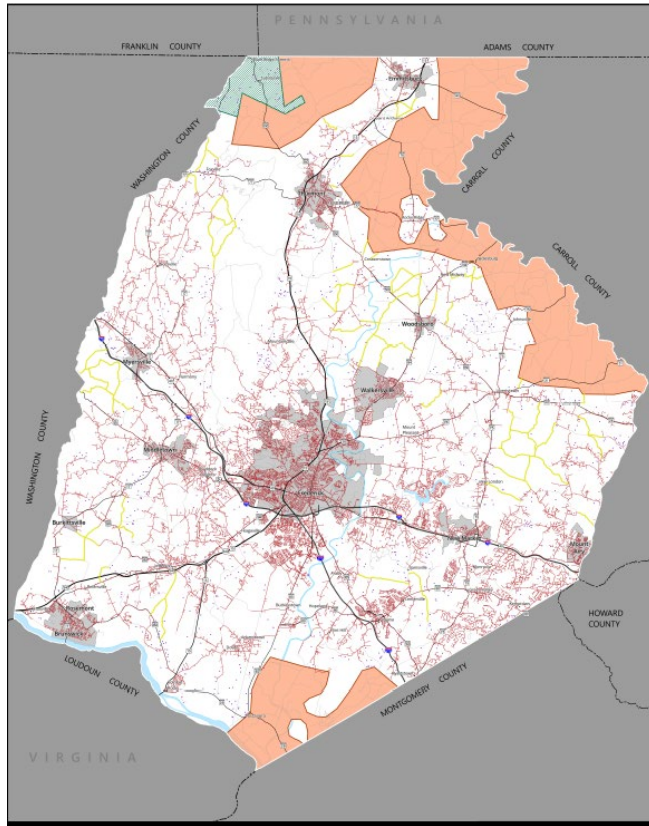
- Limited due to no access to existing infrastructure, i.e. power, HVAC, security
- Geography is a major factor
- Telecommunications infrastructure is limited
- Middle and last mile connectivity – low population low ROI

Unserved areas of the county - Category 1

- FCG contracted a study in CY 2020.
- Identified three unserved areas in the county as identified in the map.
- This identified potential public - private partnership opportunities
- **Awarded – In progress**



Significant Unserved areas of the county - Category 2 and 3



- The Broadband team has been analyzing additional coverage gaps
- Current assessment contains 1,051 addresses
- We continue to analyze for categories such as agriculture, business, rental units, and primary residence
- Partially Awarded and applied for

How we are solving the broadband issues

- Rocky Ridge project completed - 156 addresses using a grant funding
- New Shentel Cable Franchisee Agreement
- Shentel will service Category 1 and 2 areas with approximately \$30MM in grant funding
- State of Maryland Home Stretch Grant under evaluation
 - Provides for hard-to-reach addresses with grant funding of \$1.1MM
- Broadband Equity, Access, and Deployment (BEAD) Program under evaluation
 - Provides \$276MM to the state