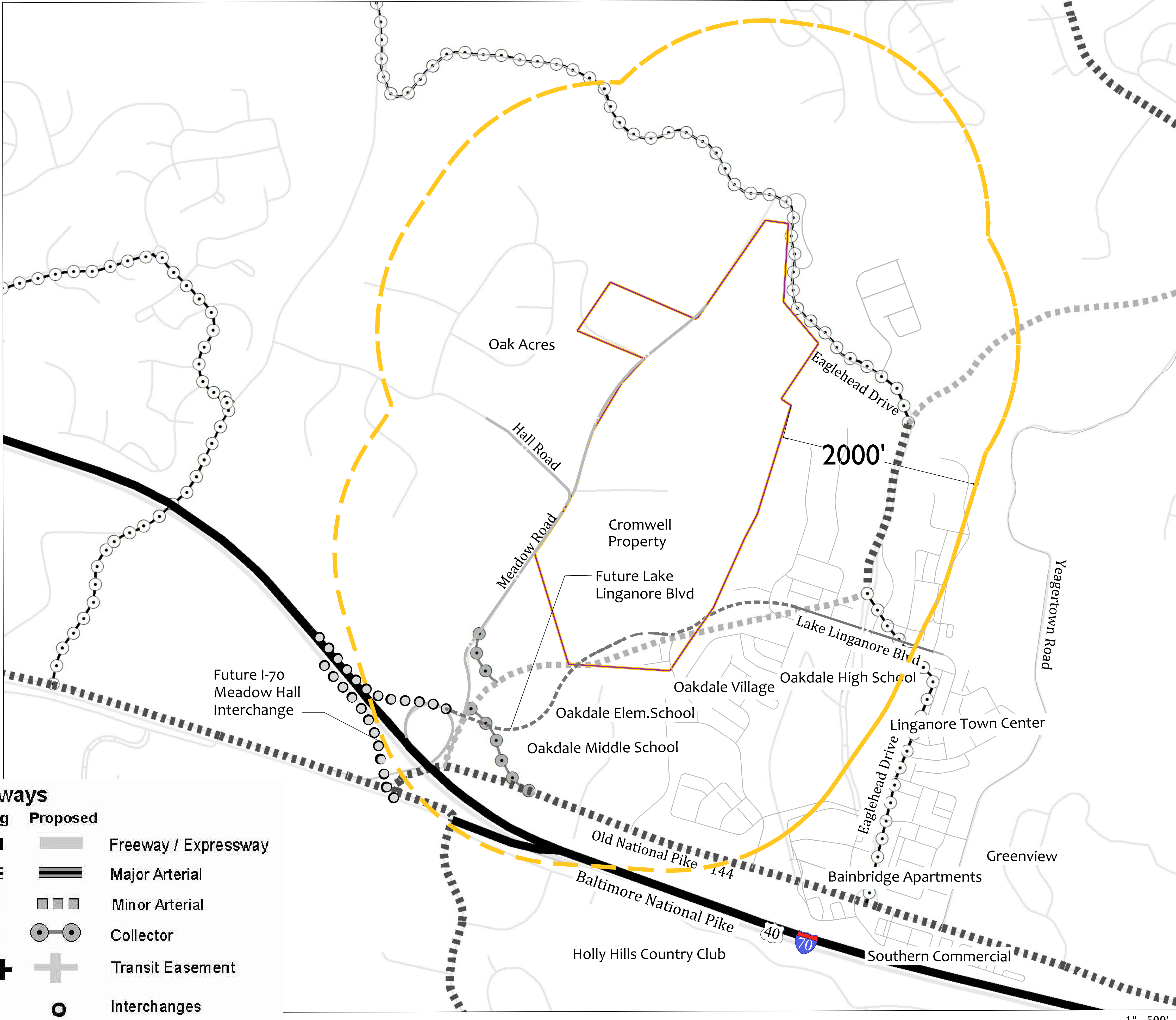
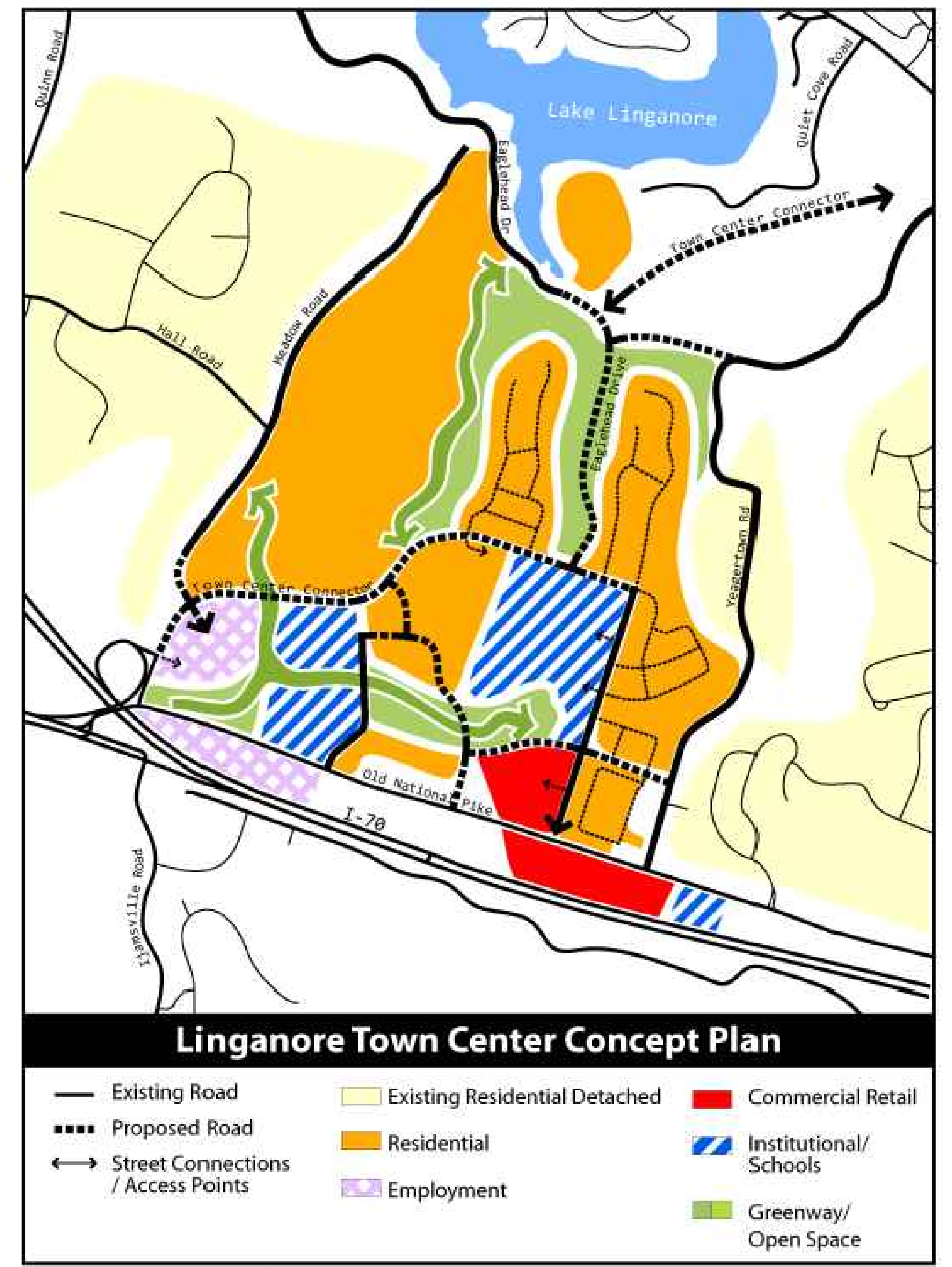


Vicinity Map
1"=2,000'



1"=500'



Prepared by Frederick County Community Development Division

NTS

REVISION	DATE	REVISION	DATE	REVISION	DATE

Applicant:
 Cromwell Investments, LLC
 1355 Beverly Road, Suite 240
 McLean, VA 22101
 Contact: Jason Wiley
 Phone: (703) 734-9730

Transportation Map & LTC Concept Plan PUD Rezoning Application

**RODGERS
 CONSULTING**

19847 Century Boulevard, Suite 200, Germantown, Maryland 20874
 Ph: 301.948.4700 Fax: 301.948.6256 www.roddgers.com

	BY	DATE
BASE DATA		
DESIGNED		
DRAWN		
REVIEWED		
RODGERS CONTACT:		
RELEASE FOR		
BY		DATE

CROMWELL
 Tax Map 78 & 79, Parcels 12 & 101
 9th Election District
 Frederick County, MD

SCALE: 1"=500'
JOB No. 06430
DATE: 06/14/19
Exhibit C
SHEET No. 1 OF 1