

# Frederick County Solid Waste Management Options Study

**Public Outreach Workshops**

**9 November 2015 – 23 January 2016**

Facilitated on behalf of the Solid Waste Steering Committee by:



NEXIGHT GROUP



# Introduction to the Study Team



**Ross Brindle**

**NEXIGHT GROUP**



**Jeremy Morris**

**Geosyntec**  
consultants



**Tom Ramsey**

**Geosyntec**  
consultants

**Geosyntec is the County's Consultant for the Study  
Nexight is Geosyntec's Subconsultant**



*Solid Waste Steering Committee members pictured above (left to right): Chris Voell, Joe Richardson, Kai Hagen, Patrice Gallagher, Peter Blood, Chairman John Daniels, Phil LeBlanc, County Executive Jan Gardner, Ellis Burruss, and Don Briggs. Not pictured: David Gray and Pat Mylio (alternate).*

## **Solid Waste Steering Committee**

**John Daniels - Chairman**

## Public Forum Workshop Agenda

7:00pm – 7:20pm	<p><b>Opening Session</b></p> <ul style="list-style-type: none"> <li>• Welcome and Opening Remarks</li> <li>• Overview of Workshop Format and Structure</li> <li>• Review of Frederick County Solid Waste Management and Recycling</li> </ul>
7:20pm – 7:50pm	<p><b>Brainstorm Solid Waste Management Options</b></p> <p>Focus Question: What solid waste management options would you suggest we consider in this study?</p>
7:50pm – 8:10pm	<p><b>Rank Criteria for Assessing Solid Waste Management Options</b></p> <p>Focus Question: What criteria are most important to you in evaluating solid waste management options?</p>
8:10pm – 8:35pm	<p><b>Open Discussion</b></p> <p>Focus Question: What other issues have we not discussed that are important to you?</p>
8:35pm – 8:50pm	<p><b>Review and Discuss Ranked Criteria</b></p>
8:50pm – 9:00pm	<p><b>Closing</b></p>



# Welcome and Opening Remarks



**What's Next?**  
Solid Waste Public Forum

[www.frederickcountymd.gov/WhatsNext](http://www.frederickcountymd.gov/WhatsNext)

## **Goal: Active Sharing of Ideas through Transparent Process**

- Intended to inform the County's long-term planning and decision making
- Focused on:
  - ✓ Residential and commercial trash
  - ✓ Recycling
  - ✓ Yard waste
  - ✓ Construction waste (from building, land clearing, etc.)
- Forward looking
- No final decisions will be made during the workshops
- No detailed consideration of siting issues

## **Goal: Active Sharing of Ideas through Transparent Process**

- Please follow these ground rules:
  - ✓ Be respectful and listen to others
  - ✓ Be collaborative
  - ✓ Brainstorm – all ideas are good ideas
  - ✓ Stay focused and on task
  - ✓ Be concise
- If you are attending multiple Public Forum workshops, allow citizens who have not yet contributed to do so before repeating viewpoints expressed at prior workshops

## Phase I of the Study

- Key outputs from each workshop will include the following:
  - ✓ Options to consider as part of the study
  - ✓ Ranked criteria for screening/assessing options
  - ✓ Other factors and issues to consider
- Draft Report will be prepared after completion of all workshops
  - ✓ Summary “synthesis” workshop on 29 February 2016
  - ✓ Mechanism for public review and comment
- Final Report to County Executive by 31 May 2016

## Phase II of the Study

- Recommendations from Phase I carried forward into a deeper study of feasible options for implementing changes

**Keep up-to-date: [www.frederickcountymd.gov/WhatsNext](http://www.frederickcountymd.gov/WhatsNext)**



## Regulation under the Maryland Recycling Act (MRA)

- The MRA establishes recycling goals for all Maryland Counties based on population
  - Frederick County is currently required to recycle 20% of the solid waste generated
  - This rate increases to 35% by 31 December 2015
- To allow fair measurement across counties, waste and recycling is divided into MRA and non-MRA materials
- MRA materials are municipal solid waste (MSW) plus some industrial wastes

## Recycling under the Maryland Recycling Act (MRA)

- What counts towards MRA recycling?
  - ✓ Paper, Plastic, Glass, Metal, Compostables
  - ✓ Misc. (e.g., in 2013, Frederick County recycled roofing shingles, fiberglass, granule waste, and toner cartridges, amongst other materials)
    - Over 134,000 tons of MRA materials were recycled in the county in 2013
- What doesn't count towards MRA recycling?
  - × Antifreeze, Asphalt, Concrete, Construction Waste, Land-clearing Debris, Scrap Automobiles, Scrap Metal, Sewage Sludge, Soils, Waste Oil, ...
    - Over 36,000 tons of non-MRA materials were recycled in the county in 2013

→ How and what you measure is important

## Recycling in Frederick County under Maryland Recycling Act (MRA)

- MRA Recycling Rate
  - ✓ 49.5% in 2013 (134,128 tons)
  - ✓ Up from 46.7% in 2012 and 34.3% in 2005
  - ✓ Ahead of 35% MRA goal by Dec. 2015
- MRA Waste Diversion Rate (WDR)
  - ✓ 54.5% in 2013
  - ✓ Calculated from MRA Recycling Rate plus 5% source reduction credits for promoting recycling programs

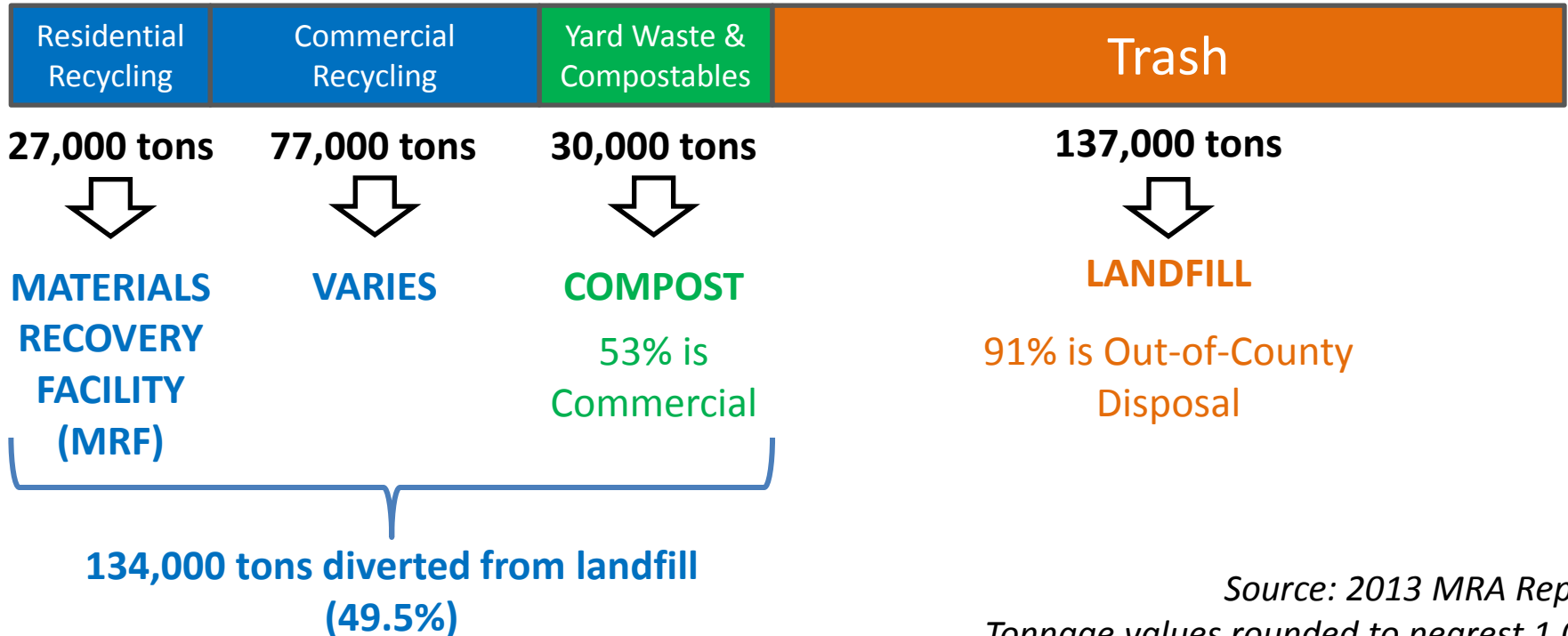


# Review of County Solid Waste Management

## Solid Waste Materials Balance for Frederick County (2013)

Total MRA Waste

271,000 tons



Source: 2013 MRA Report  
Tonnage values rounded to nearest 1,000

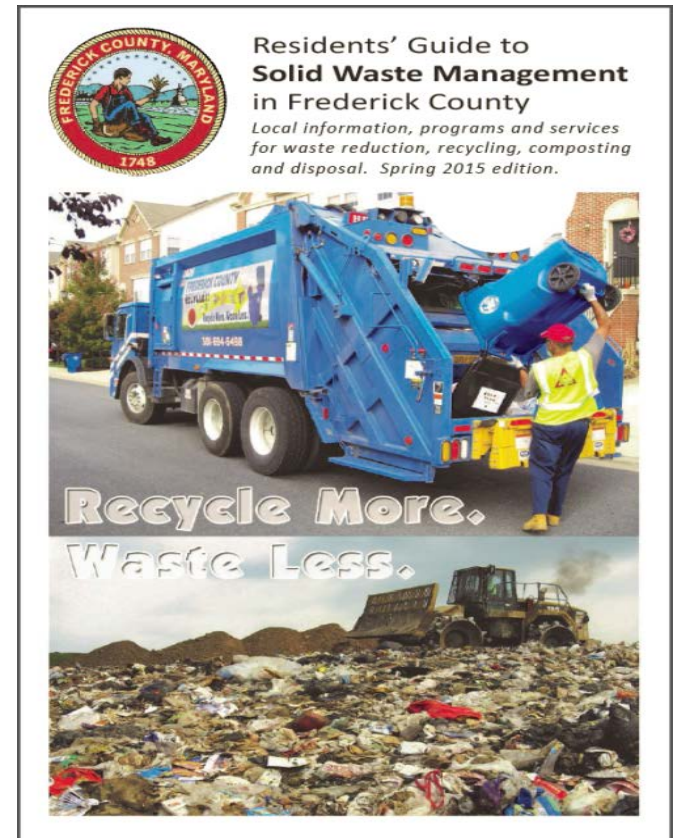
## Zero Waste Maryland

- *“Zero Waste Maryland: Maryland’s Plan to Reduce, Reuse, and Recycle Nearly All Waste Generated in Maryland by 2040”* (issued December 2014)
  - ✓ 80% overall recycling goal
    - ✓ 90% recycling goal for food scraps
    - ✓ 90% recycling goal for yard trimmings
  - ✓ 85% diversion goal
- Incremental goals set between 2015 and 2040
- The Plan acknowledges that what counts toward recycling and diversion goals varies and is likely to evolve



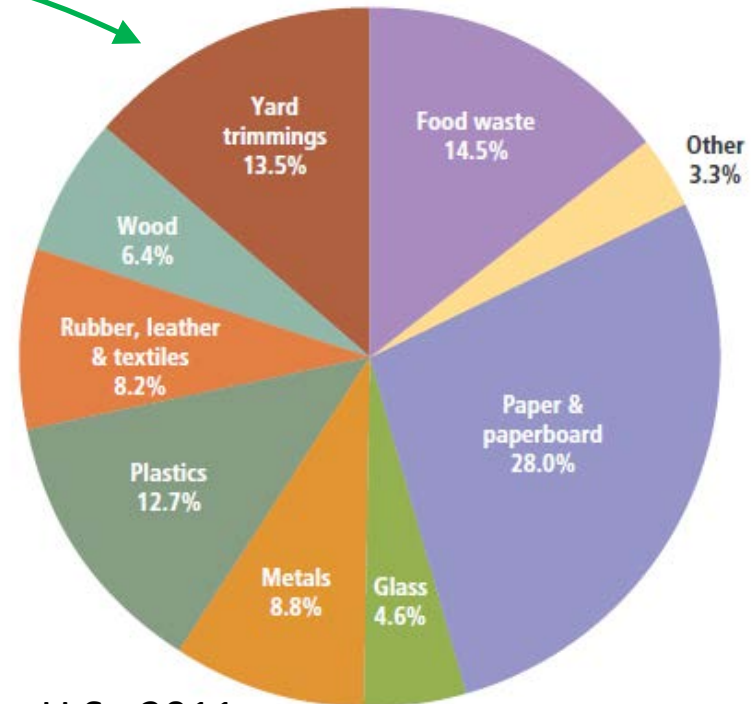
## Zero Waste Maryland – Suggested Actions for Counties

- The Plan suggests eight primary actions to be taken over the next 25 years to achieve the goals, including:
  - ✓ Increase source reduction and reuse
  - ✓ Increase recycling access and participation
  - ✓ Increase diversion of organics
  - ✓ Conduct education and outreach



## Zero Waste Maryland – Suggested Actions for Counties

- The Plan suggests eight primary actions to be taken over the next 25 years to achieve the goals, including:
  - ✓ Address specific target materials
  - ✓ Incentivize technology innovation and develop markets
  - ✓ Recover energy from waste
  - ✓ Collaborate and lead by example



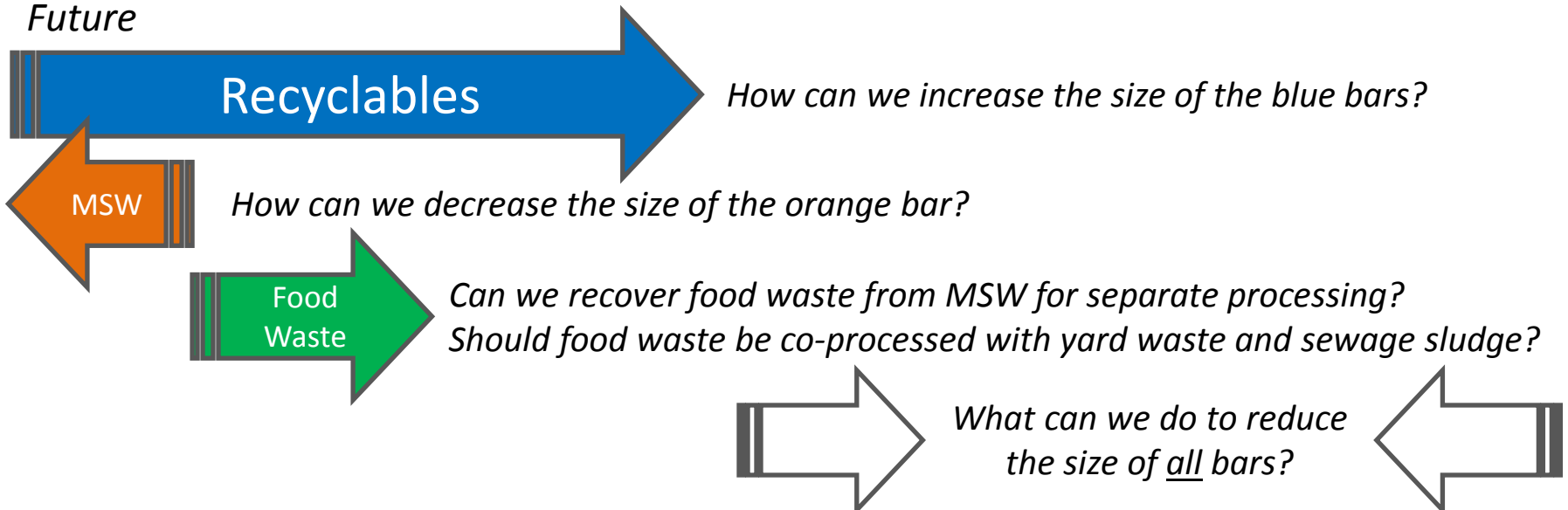
Total MSW Generation by Material in the U.S., 2011

## What solid waste management options would you suggest we consider in this study?

*Current*



*Future*





### What criteria are most important to you in evaluating solid waste management options?

Some Criteria proposed by the Steering Committee and Previous Workshop Participants

Lifecycle Costs

Environmental Impacts

Carbon Footprint

Number of Jobs Created

Quality of Life

Public Health and Safety

Program Independence

Enforceability

Fair to all Participants

Flexibility and Adaptability

Landfill Diversion

Zero Waste

Sustainability

Economic Benefit

County Image

Energy Production

Ease and Simplicity

Dependence on Education

**Open Discussion:**  
**What other issues have we not discussed that are important to you?**

**What criteria are most important to you in evaluating solid waste management options?**

**(Output from Workshop)**



# Thank You for Your Time and Contributions!

## Reminder of Upcoming Workshop Venues and Dates

Date	Time	Location
Monday 9 November 2015	7 – 9 pm	Winchester Hall, 1st floor 12 East Church Street Frederick, MD, 21701
Thursday 19 November 2015	7 – 9 pm	Oakdale High School, Room B200 5850 Eaglehead Drive Ijamsville, MD 21754
Monday 7 December 2015	7 – 9 pm	Brunswick Volunteer Fire Company 1500 Volunteer Drive Brunswick, MD 21716
Monday 11 January 2016	7 – 9 pm	Urbana High School, Media Center 3471 Campus Drive Ijamsville, MD 21754
Saturday 23 January 2016	10 am – 12 pm	Thurmont Town Hall 10 Frederick Road Thurmont, MD 21788