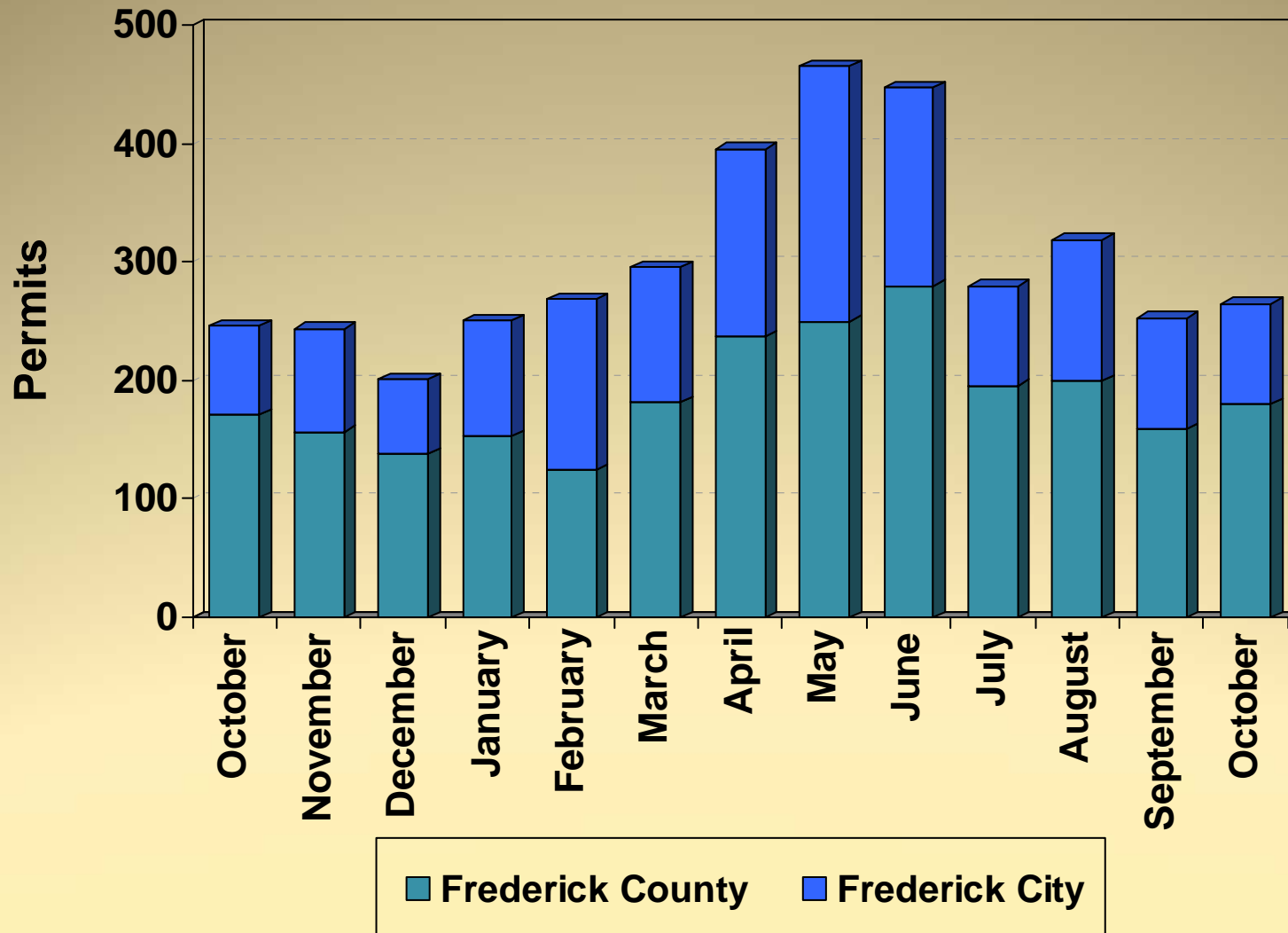


Community Development Division

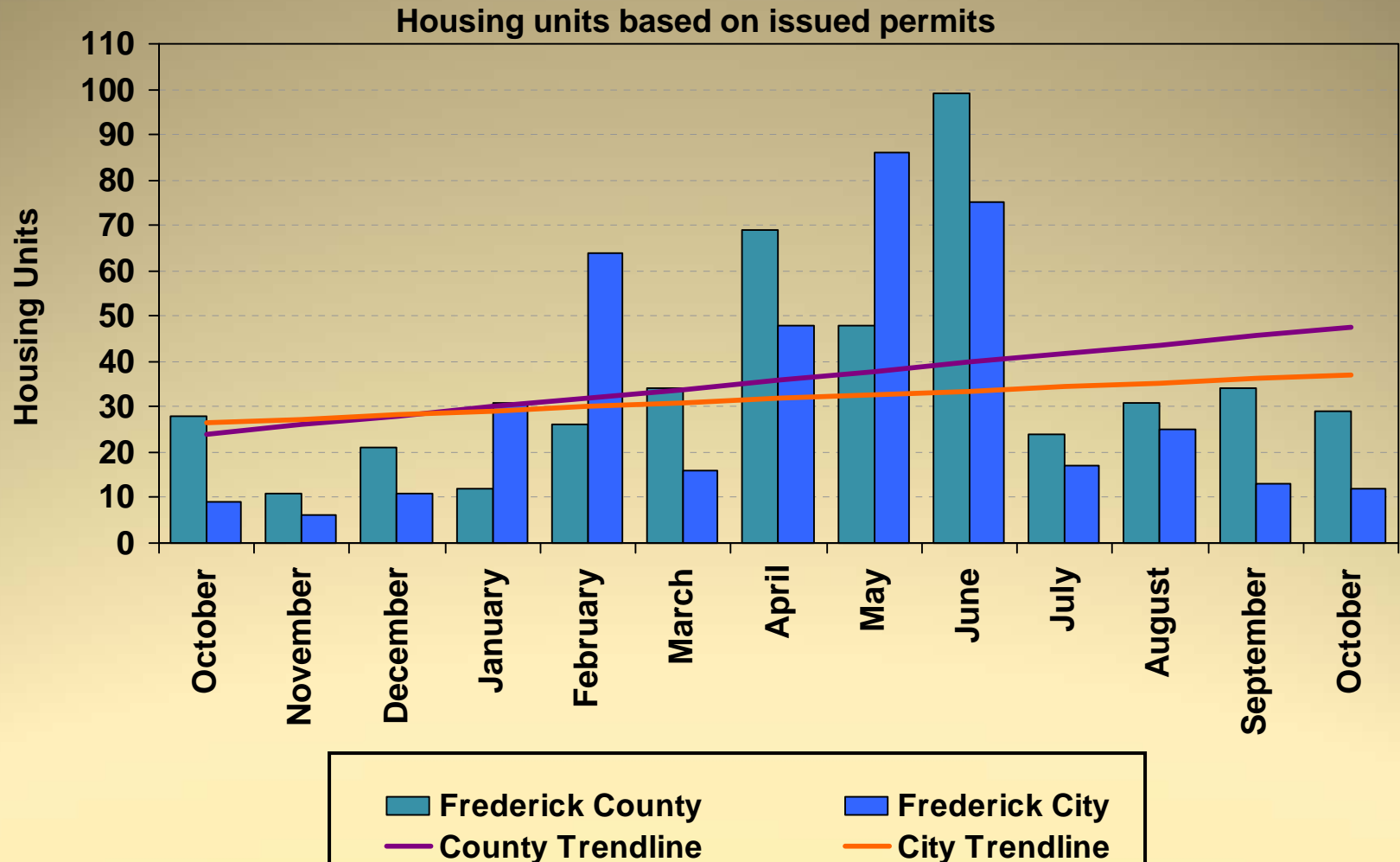
- December 20, 2012
- Development Data/Project



Building Permits Issued 2011 - 2012



Housing Unit Construction 2011 - 2012



12 Month Total (October 2011 – September 2012): 842 Units

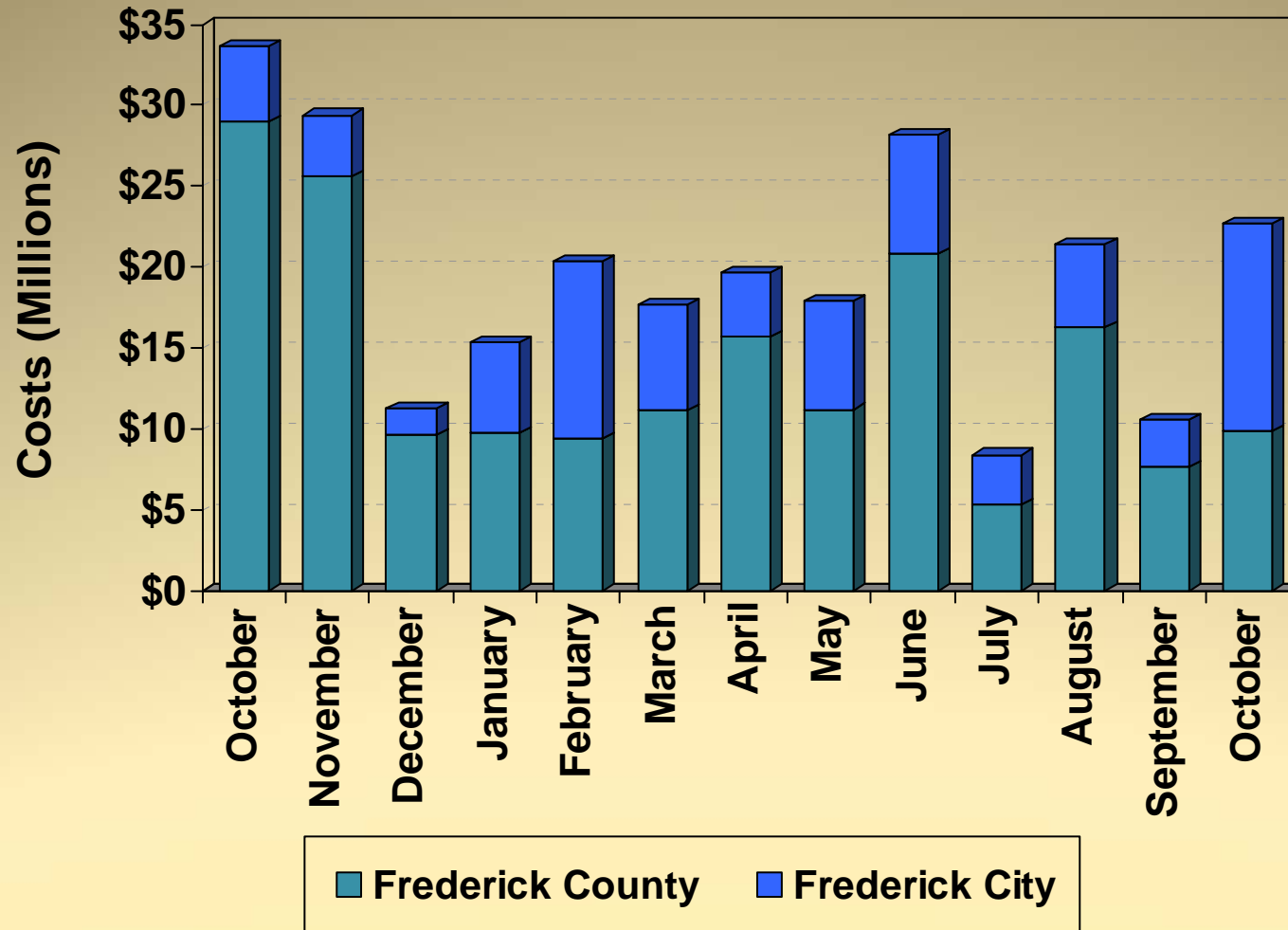
Housing Unit Construction

Comparison of Current Month and YTD Units

Current Month – October			
Year	County	City	Total
2012	29	12	41
2011	28	9	37
2010	26	10	36
2009	36	6	42
2008	33	8	41
5 Year Avg.	30	9	39

YTD – October			
Year	County	City	Total
2012	406	387	793
2011	392	92	484
2010	511	146	657
2009	439	155	594
2008	368	116	484
5 Year Avg.	423	179	602

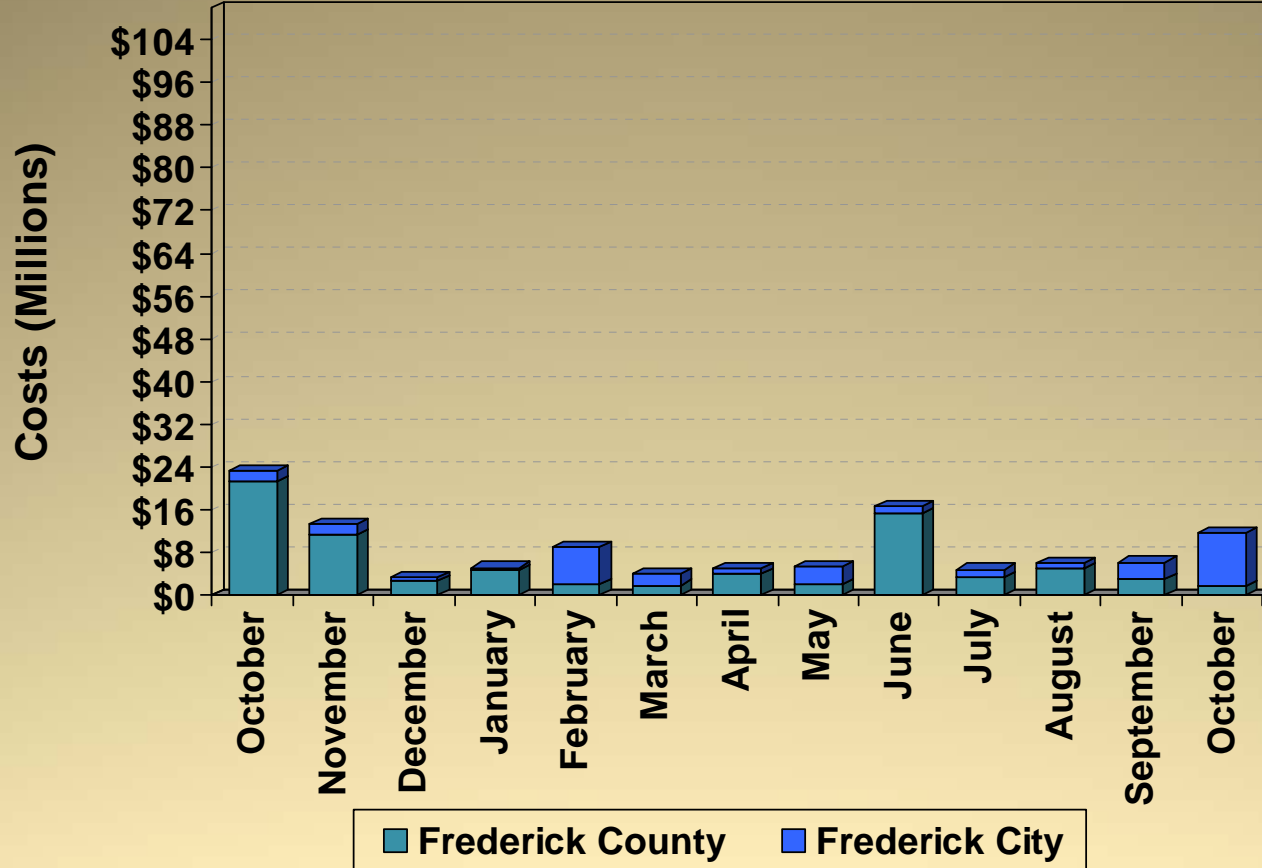
Construction Costs 2011 - 2012



Costs based on issued permits

Commercial Construction Costs

2011 - 2012

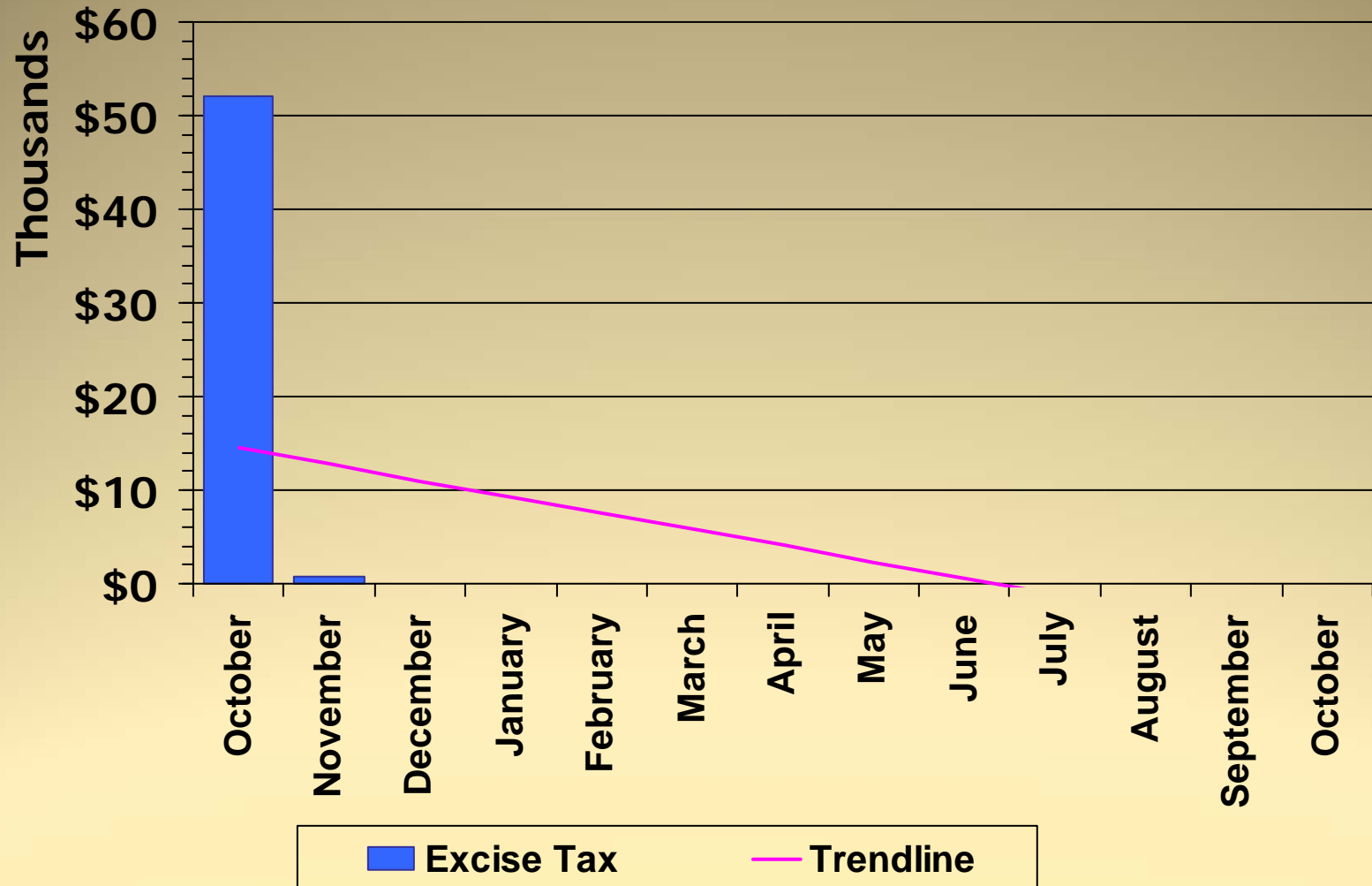


Cost per month:

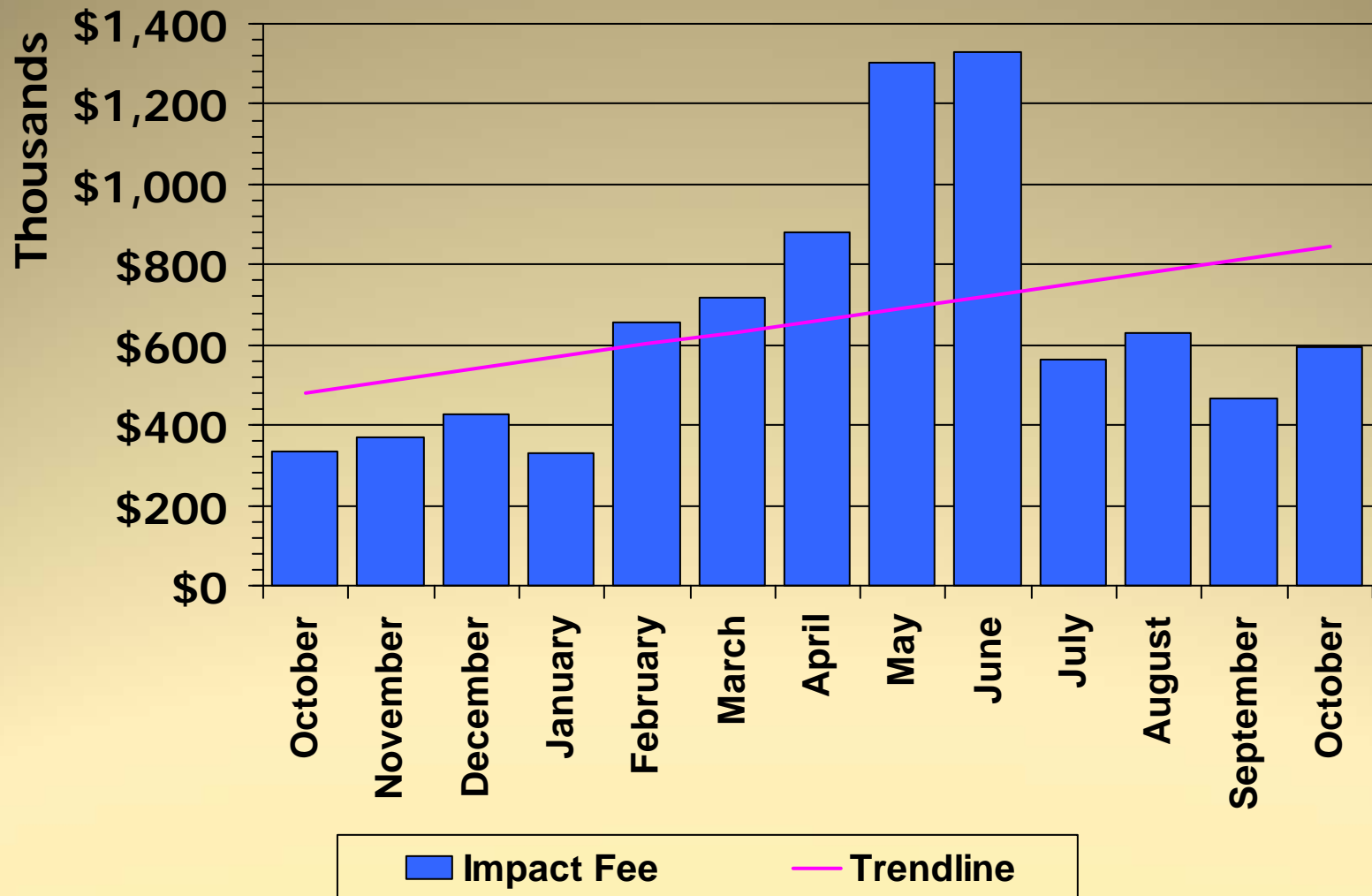
Costs based on issued permits

- January 2012 Co. – Mount St. Mary's University accessory (\$1.4M)
- February 2012 City – Market Square at Frederick LLC new (\$5.1M)
- April 2012 Co. – Mount Saint Mary's Univ. Visitor Center new (\$2.3M)
- July 2012 Co. – St. John's Catholic Prep. alteration (\$1.2M)
- September 2012 Co. – Life Technologies alteration (\$2.7M)
- October 2012 Co. – Fannie Mae alteration (\$12.5M),

Excise Tax 2011 - 2012



Impact Fee 2011 - 2012

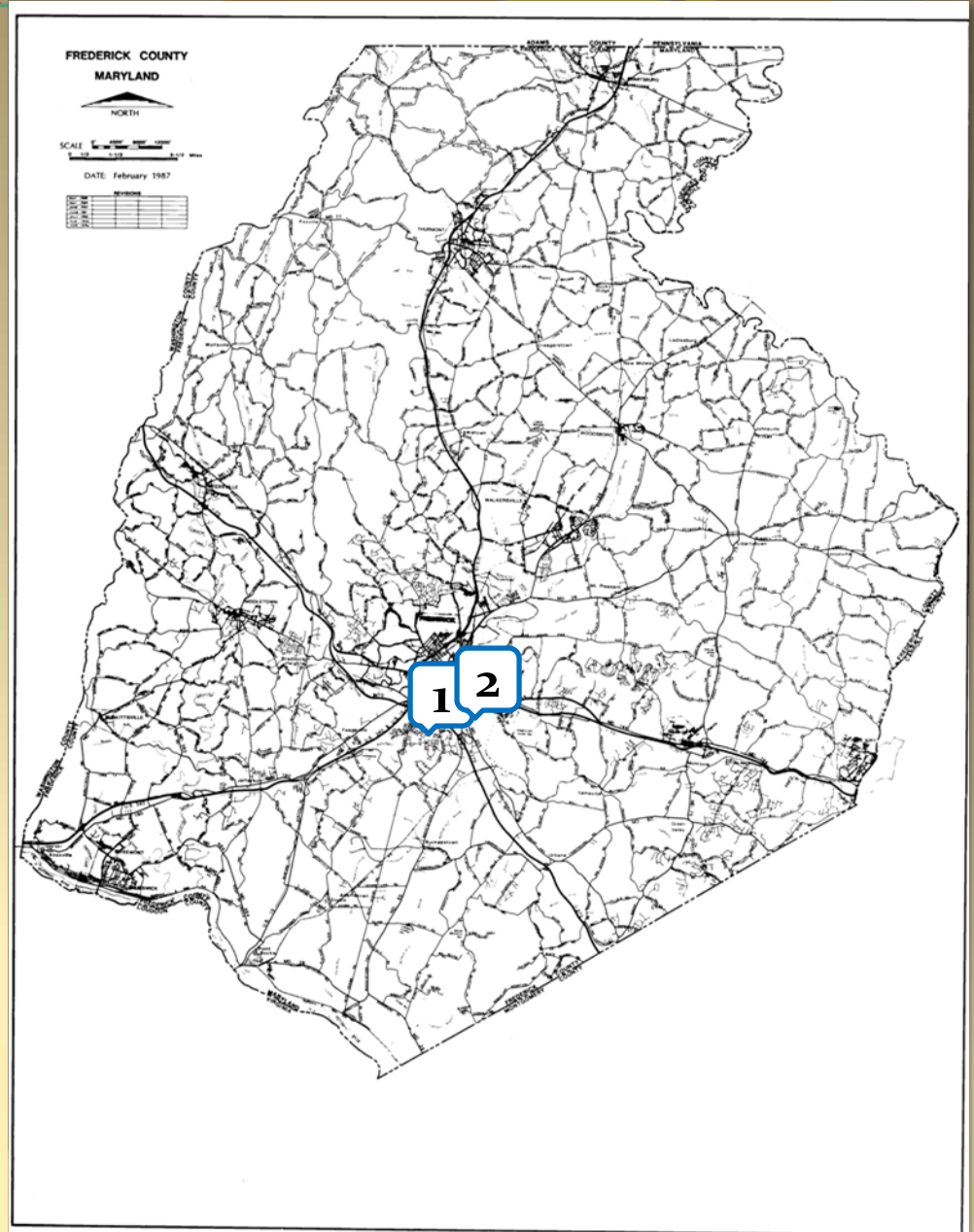


LIST OF PROJECTS

(upcoming FcPc/BOA meetings)

Projects in the County

1. Center at Monocacy Lot 1
2. Center at Monocacy Lot 15
3. B-11-02 Liberty Towers, LLC
4. B-12-12 Friends of Frederick County (Landsdale DRRA)
5. B-12-13 Friends of Frederick County (Rezone 395.7 acres on the west side of Ed McClain Road)

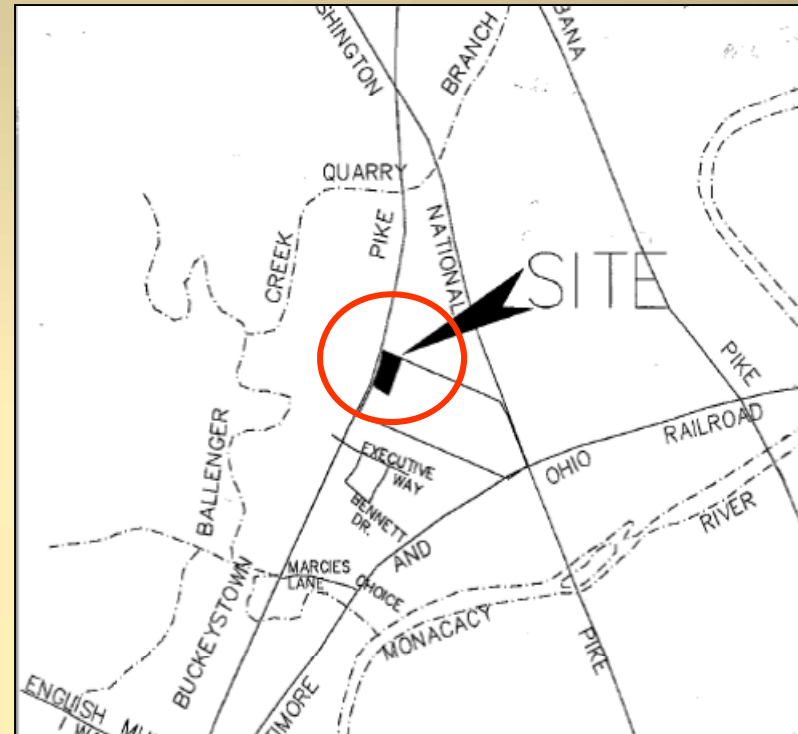




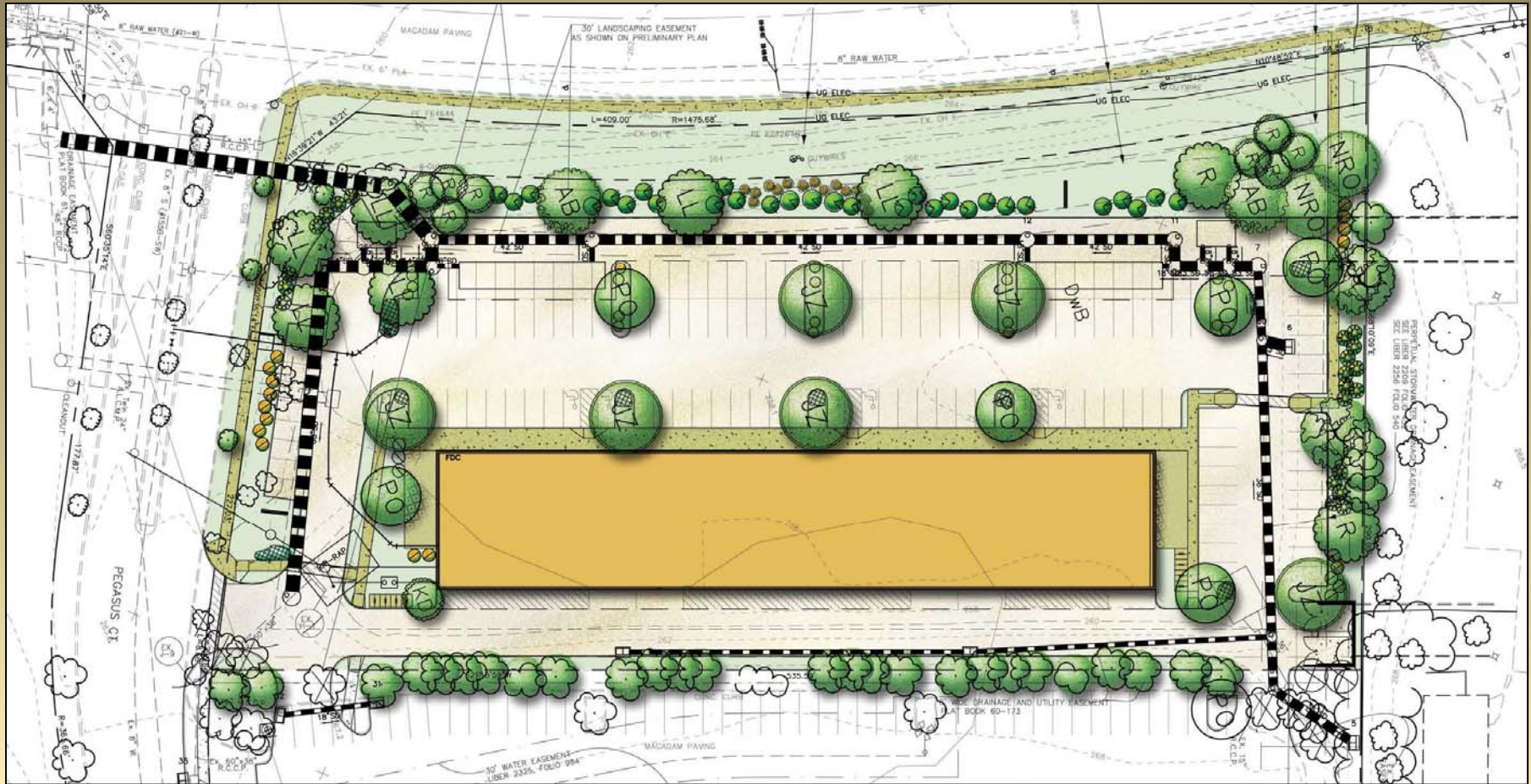
Projects in the County

Center at Monocacy Lot 1

- ❑ Request: Site Plan and APFO Approval
- ❑ Location: MD 85 and Pegasus Court
- ❑ Total Use: 21,775 square foot one story office business/restaurant/commercial retail building for uses permitted in the LI zoning district, on a 3.116 acre site.
- ❑ Zoned: Limited Industrial (LI), Frederick Planning Region
- ❑ Applicant: St. John's Properties, LLC
- ❑ Engineer: Harris, Smariga & Associates



Center at Monocacy, Lot 1

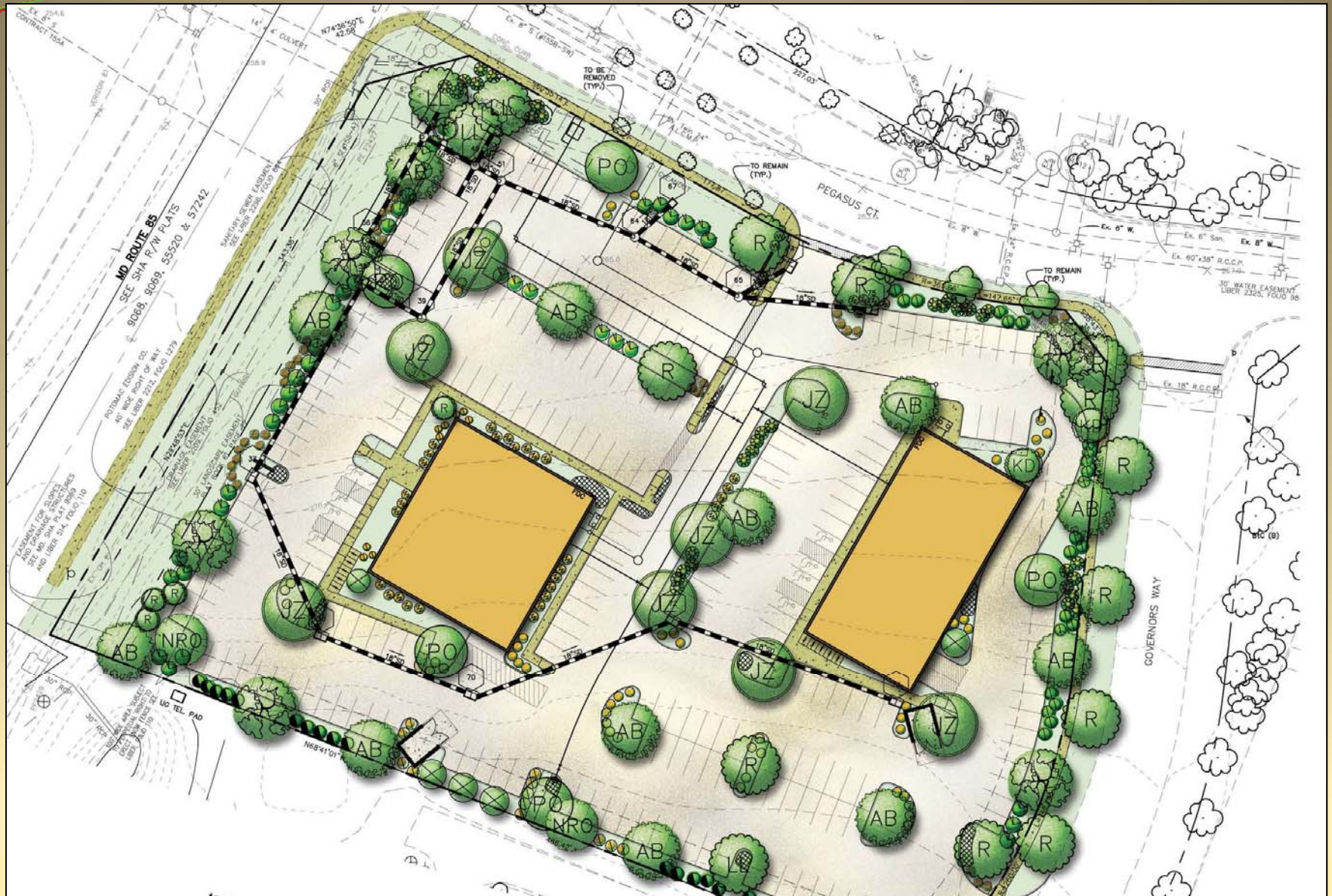


Center at Monocacy, Lot 15

- ❑ Request: Site Plan and APFO Approval
- ❑ Location: MD 85 and Pegasus Court
- ❑ Total Use: One 8,000 square foot, one story restaurant and a 8,125 square foot, one-story building with a 3,500 square foot restaurant and 4,625 square foot commercial retail mix on a 3.69-acre site.
- ❑ Zoned: Limited Industrial (LI), Frederick Planning Region
- ❑ Applicant: St. John's Properties, LLC
- ❑ Engineer: Harris, Smariga & Associates Associates



Center at Monocacy, Lot 15



Board of Appeals

B-11-02 Liberty Towers, LLC c/o Bruce Dean, Esq. - Request for Reconsideration

Request for Reconsideration of the Board's denial of special exception request to establish a 195 ft. Communications tower/monopole with a 4 ft. lightning rod and 100' x 100' leased areas with a 70' x 80' fenced in equipment compound during its reexamination of the application's 5 year plan and site plan drawings which were found by the Court to be insufficient in previous application materials, as per Circuit Court Opinion dated April 20, 2012 and Circuit Court Remand order dated June 11, 2012.

B-12-12 Friends of Frederick County c/o Law Offices of Knopf & Brown

Claim of Administrative Error relative to the October 4, 2012 decision of the Board of County Commissioners in the approval of Case No. DRRA-12-01, the Development Rights and Responsibilities Agreement for Landsdale PUD.

B-12-13 Friends of Frederick County c/o Law Offices of Knopf & Brown

Claim of Administrative Error relative to the October 4, 2012 decision of the Board of County Commissioners in the approval of Ordinance No. 12-26-621 relative to the application filed by Monocacy Ventures, LLC, et al, to rezone 395.7 acres located on the west side of Ed McClain Road, north of MD Route 80, from Agriculture (A) to Planned Unit Development (PUD).