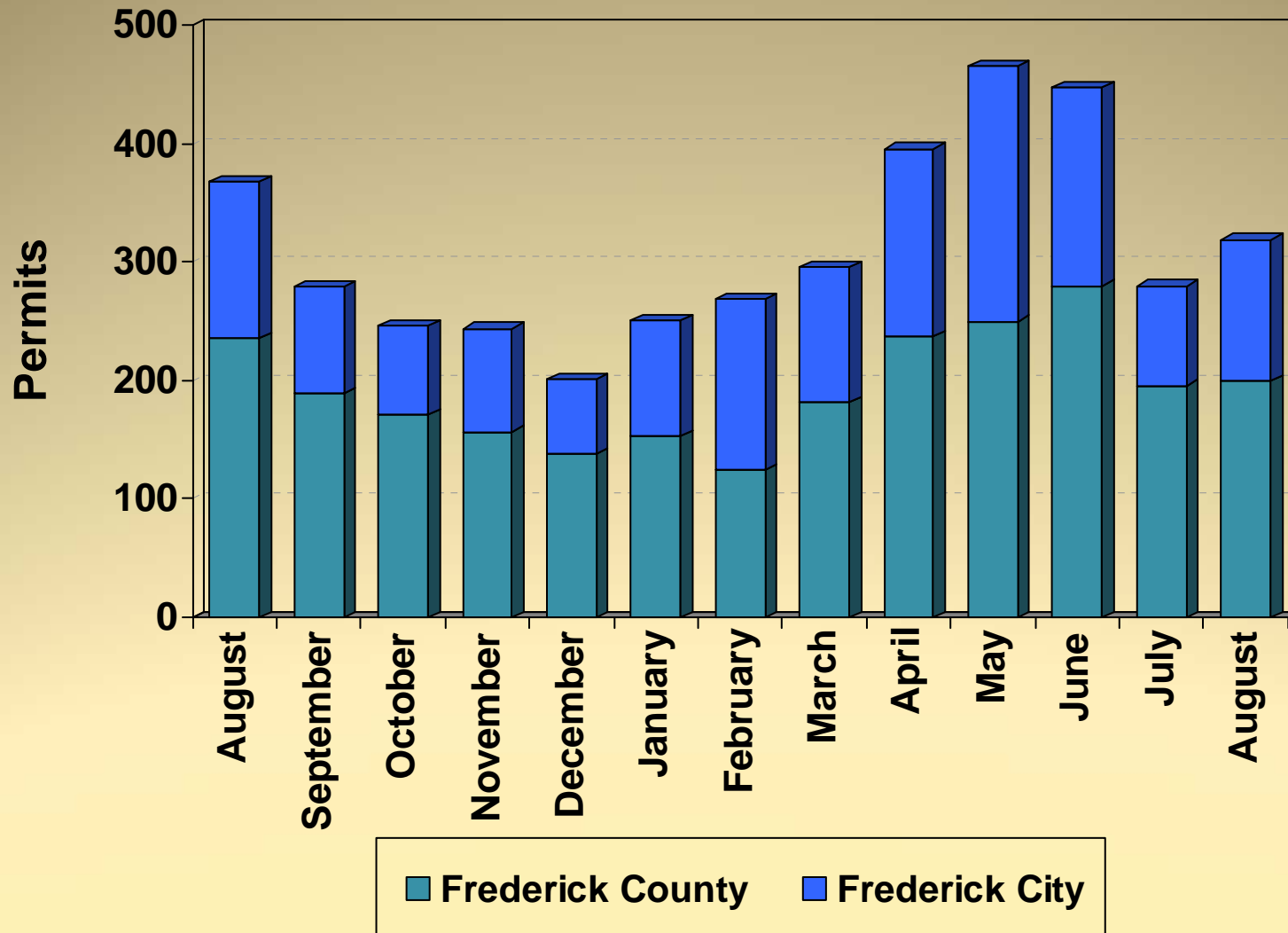


# Community Development Division

- October 5, 2012
- Development Data/Project

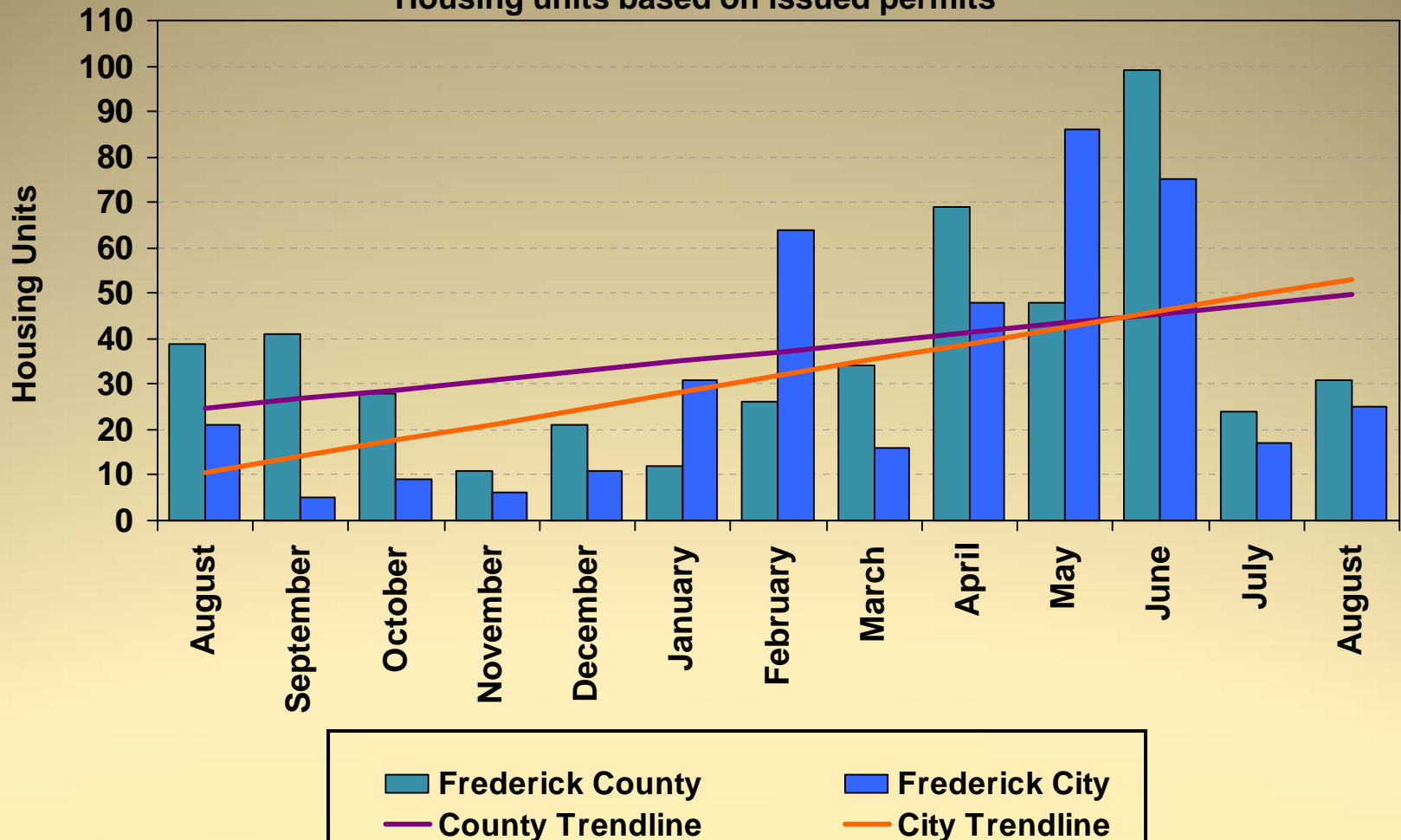


# Building Permits Issued 2011 - 2012



# Housing Unit Construction 2011 - 2012

Housing units based on issued permits



12 Month Total (August 2011 – July 2012): 837 Units

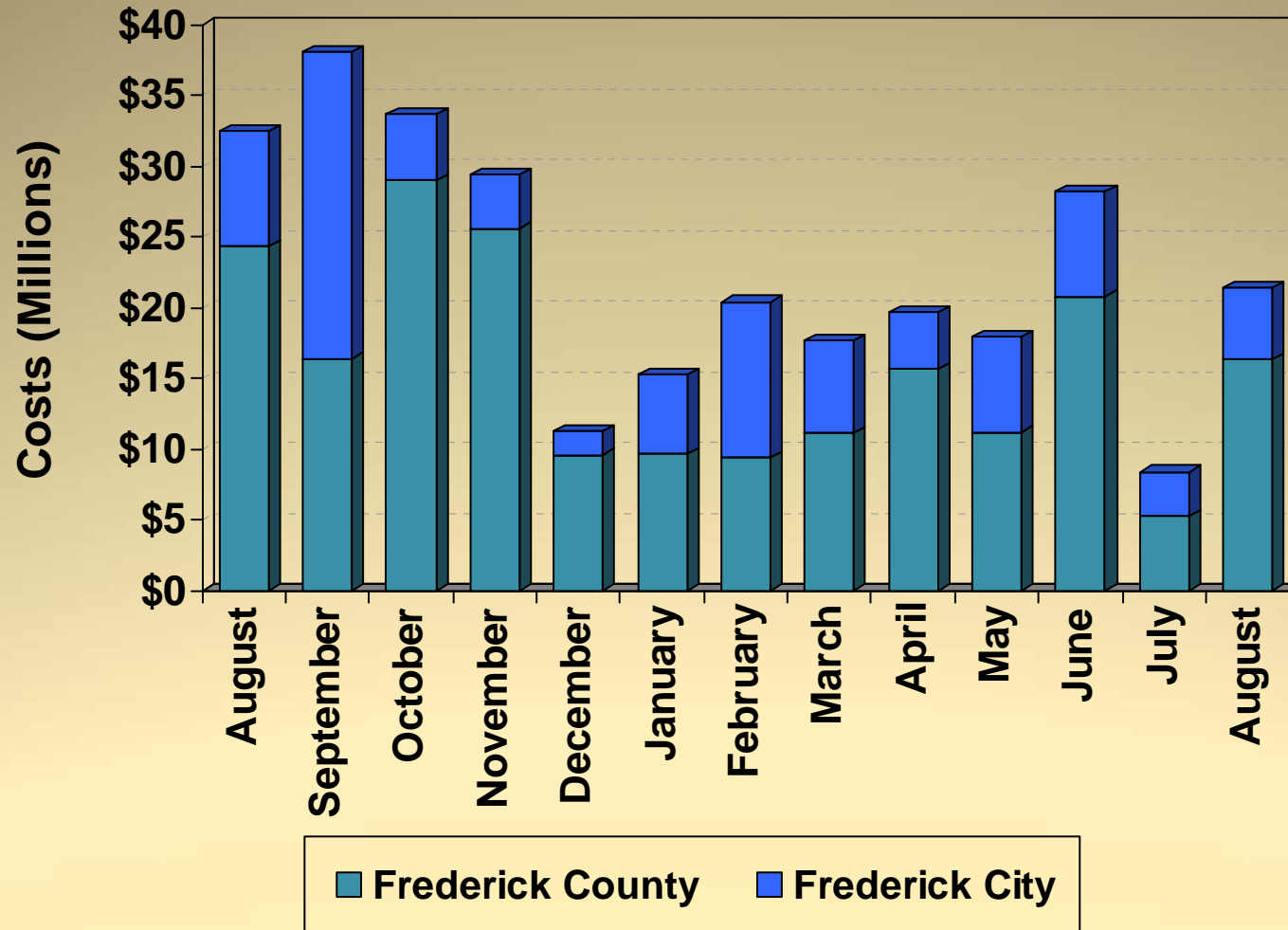
# Housing Unit Construction

## Comparison of Current Month and YTD Units

| Current Month – August |        |      |       |
|------------------------|--------|------|-------|
| Year                   | County | City | Total |
| 2012                   | 31     | 25   | 56    |
| 2011                   | 39     | 21   | 60    |
| 2010                   | 85     | 14   | 99    |
| 2009                   | 56     | 10   | 66    |
| 2008                   | 34     | 20   | 54    |
| 5 Year Avg.            | 49     | 18   | 67    |

| YTD – August |        |      |       |
|--------------|--------|------|-------|
| Year         | County | City | Total |
| 2012         | 343    | 362  | 705   |
| 2011         | 322    | 78   | 400   |
| 2010         | 443    | 130  | 573   |
| 2009         | 372    | 140  | 512   |
| 2008         | 304    | 75   | 379   |
| 5 Year Avg.  | 357    | 157  | 514   |

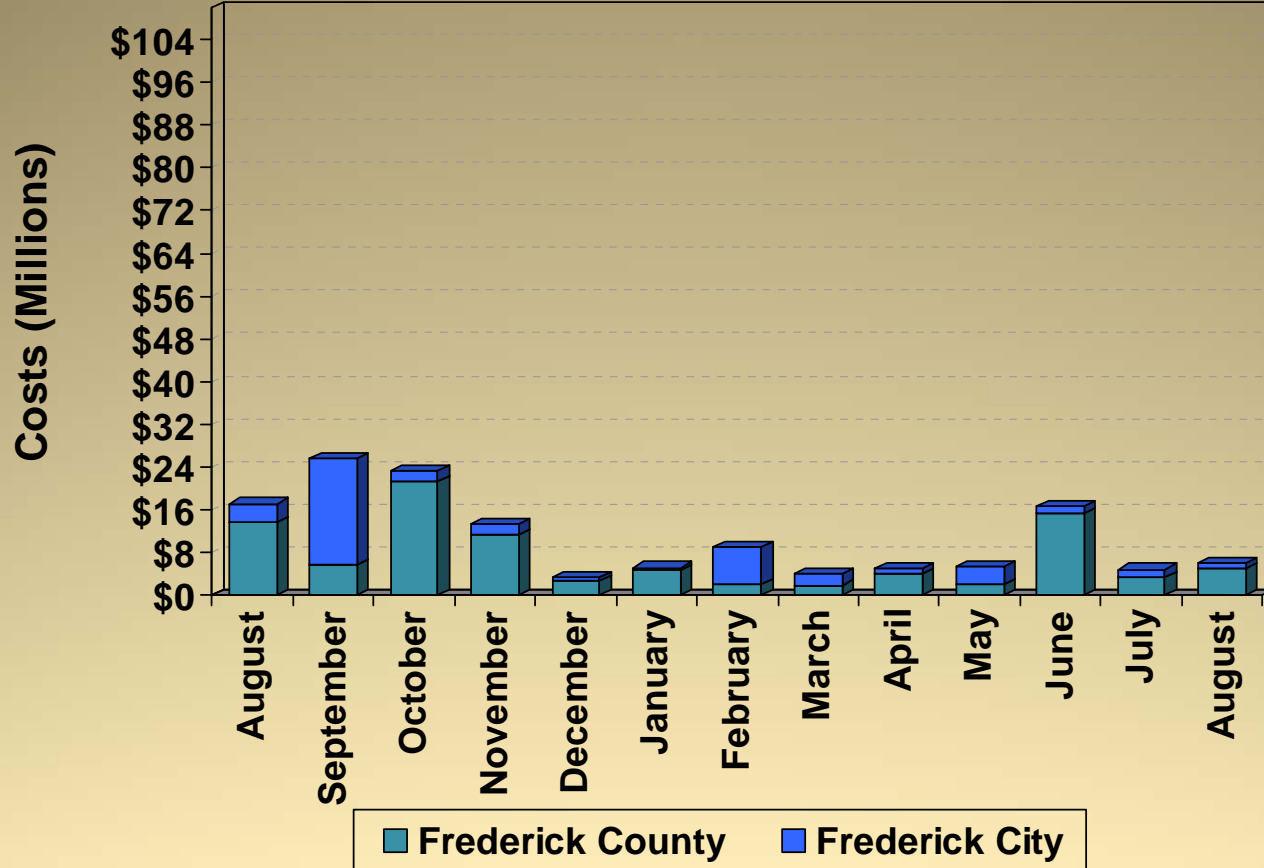
# Construction Costs 2011 - 2012



Costs based on issued permits

# Commercial Construction Costs

## 2011 - 2012



### Cost per month:

Costs based on issued permits

January 2012 Co. – Mount St. Mary's University accessory (\$1.4M)

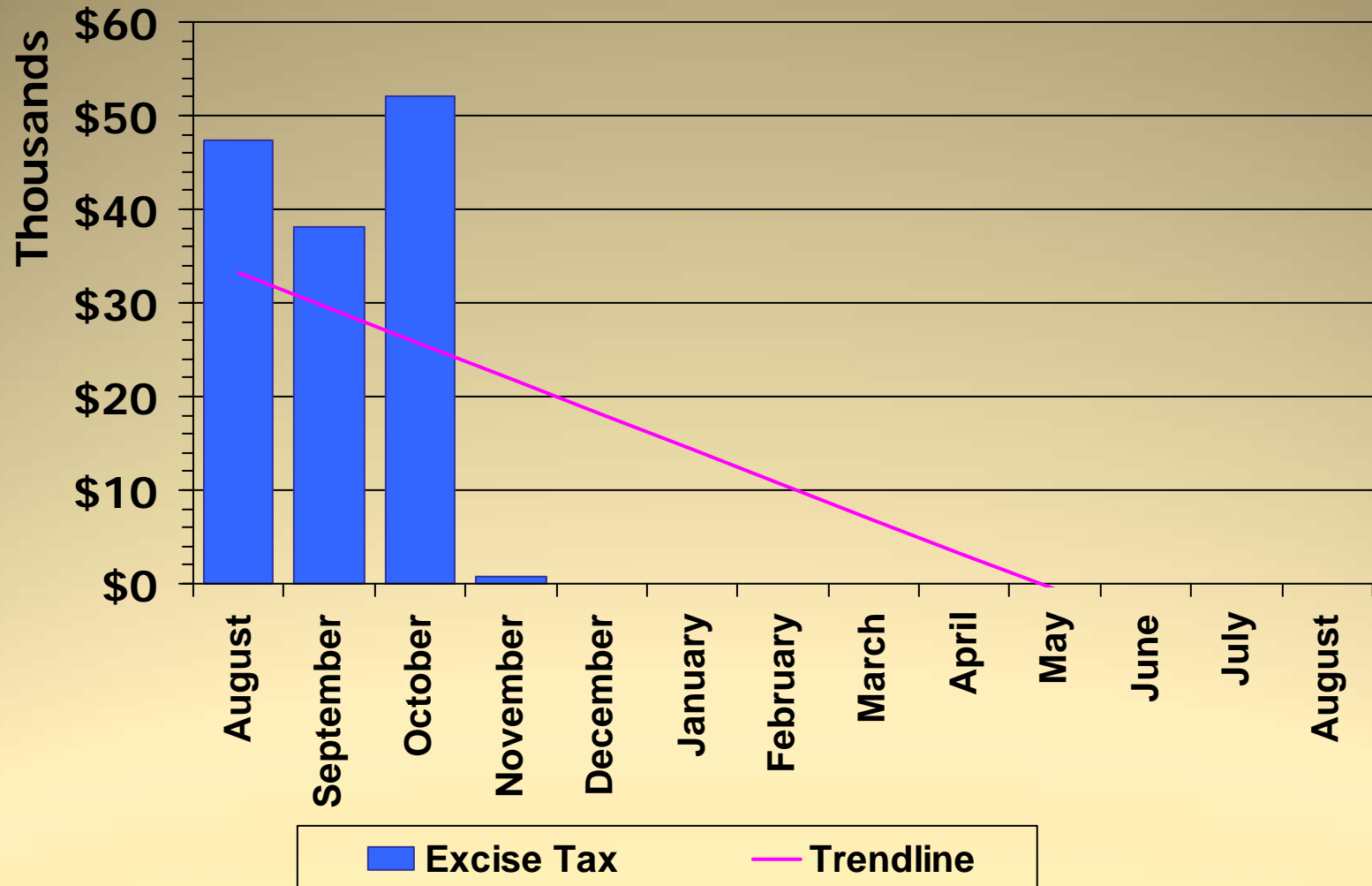
February 2012 City – Market Square at Frederick LLC new (\$5.1M)

April 2012 Co. – Mount Saint Mary's Univ. Visitor Center new (\$2.3M)

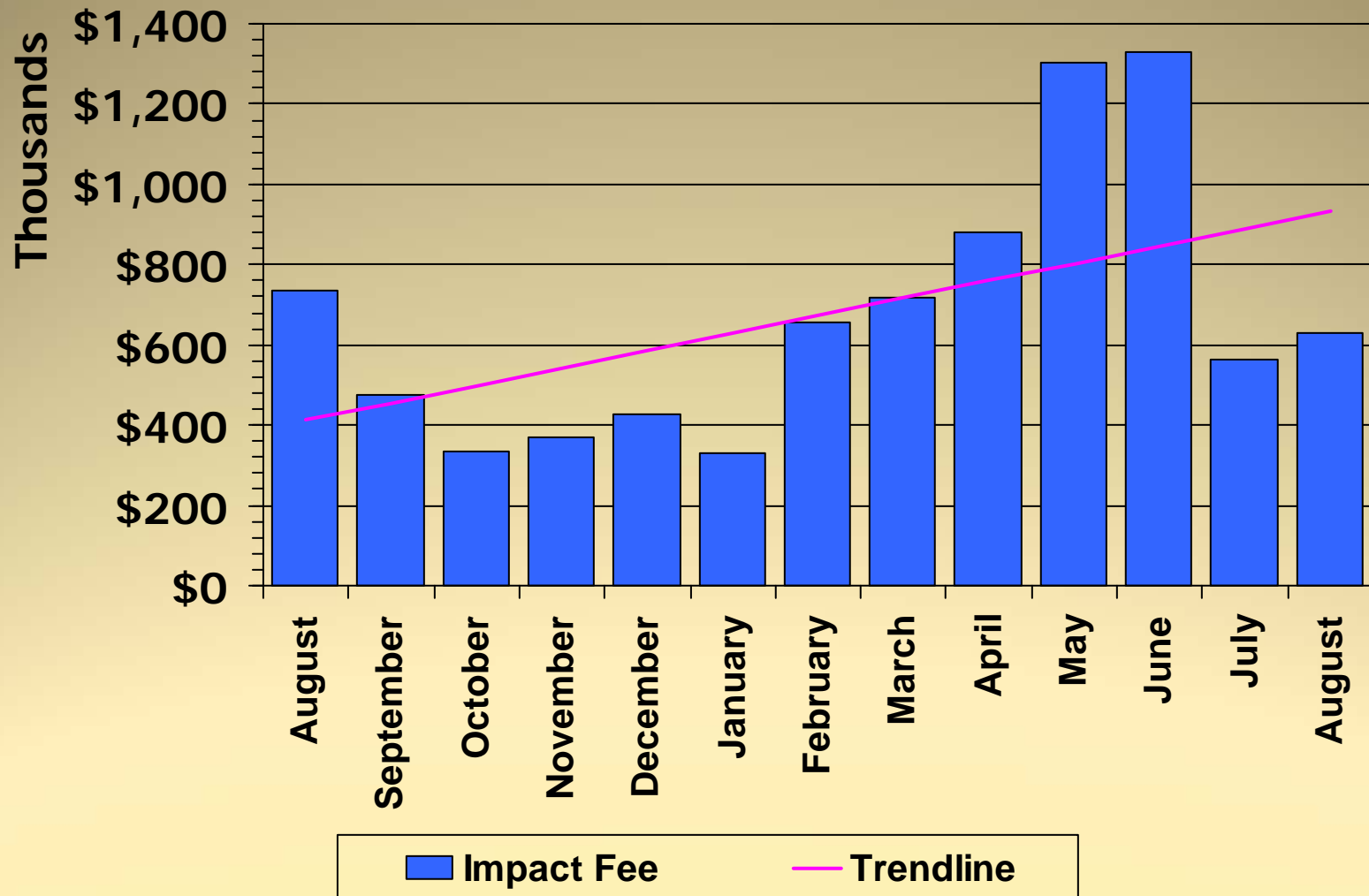
July 2012 Co. – St. John's Catholic Prep. alteration (\$1.2M)

September 2012 Co. – Life Technologies alteration (\$2.7M)

# Excise Tax 2011 - 2012



# Impact Fee 2011 - 2012



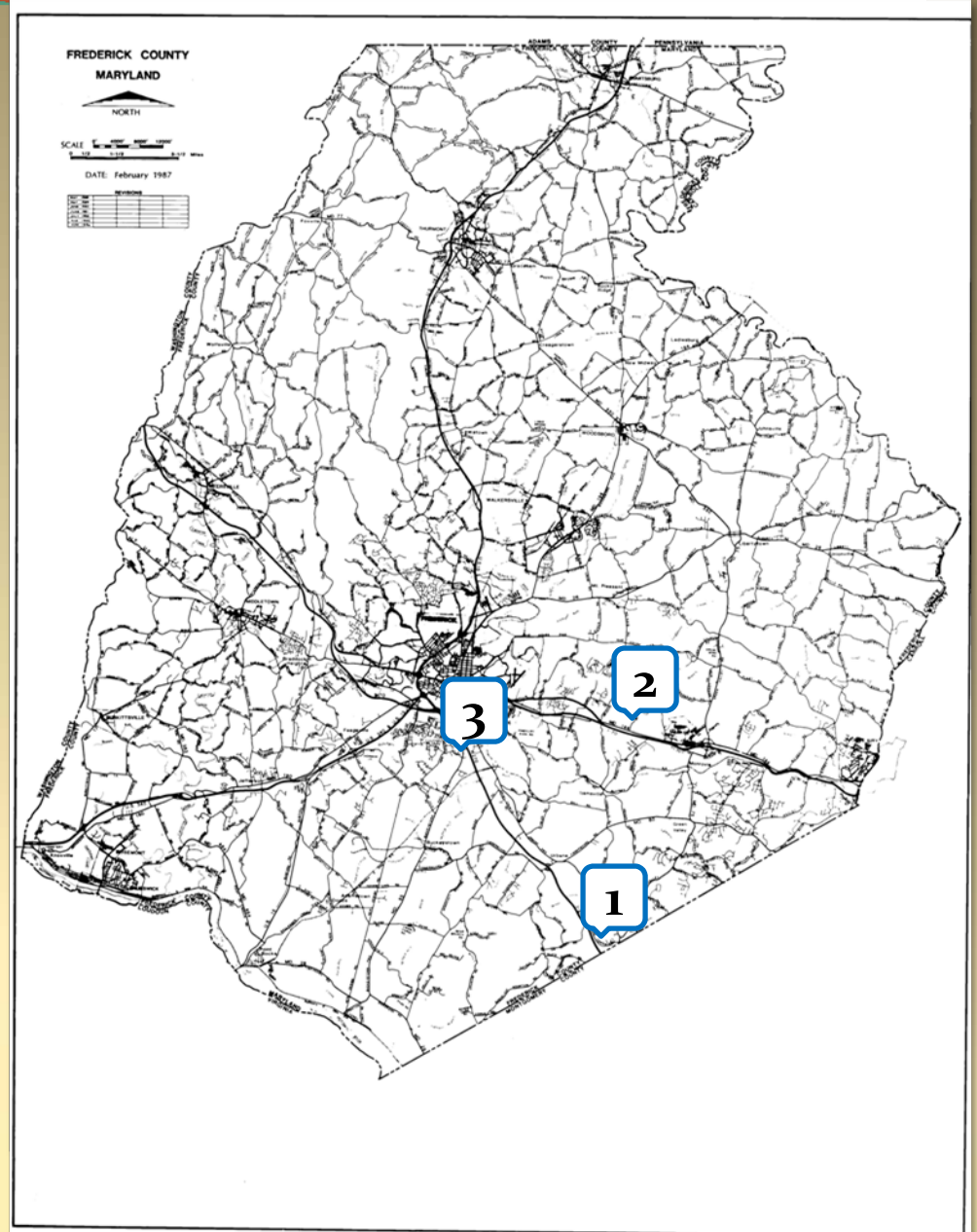


# LIST OF PROJECTS

(upcoming FcPc/BOA meetings)

## Projects in the County

1. SBA Temple
2. Supply to Barren
3. Wawa Convenience Store
4. B-12-10 Grant County Mulch Inc.
5. B-12-11 Springfield Manor Winery and Distillery c/o John & Amie St. Angelo
6. Liberty Towers, LLC- Court Remand Items

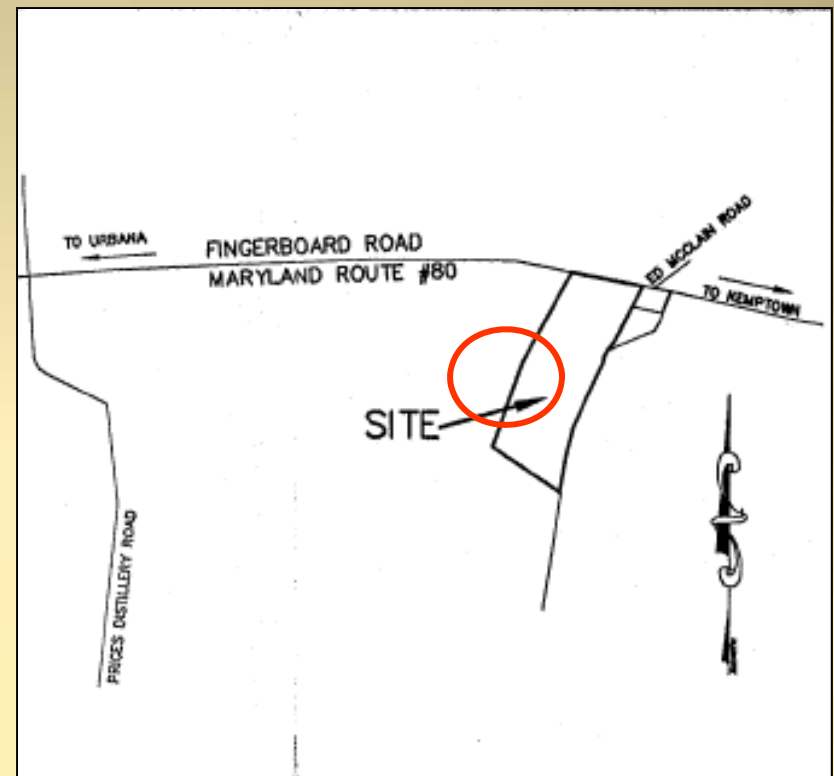




# **Projects in the County**

# SBA Temple

- ❑ Request: Site Plan approval
- ❑ Location: MD 80 southwest of Ed McClain Road
- ❑ Total Use: 51,425 square foot place of worship with 5 priest homes, on a 43.73-acre site
- ❑ Zoned: Agricultural (AG), Urbana Planning Region
- ❑ Applicant: SBA Temple
- ❑ Engineer: Harris, Smariga & Associates

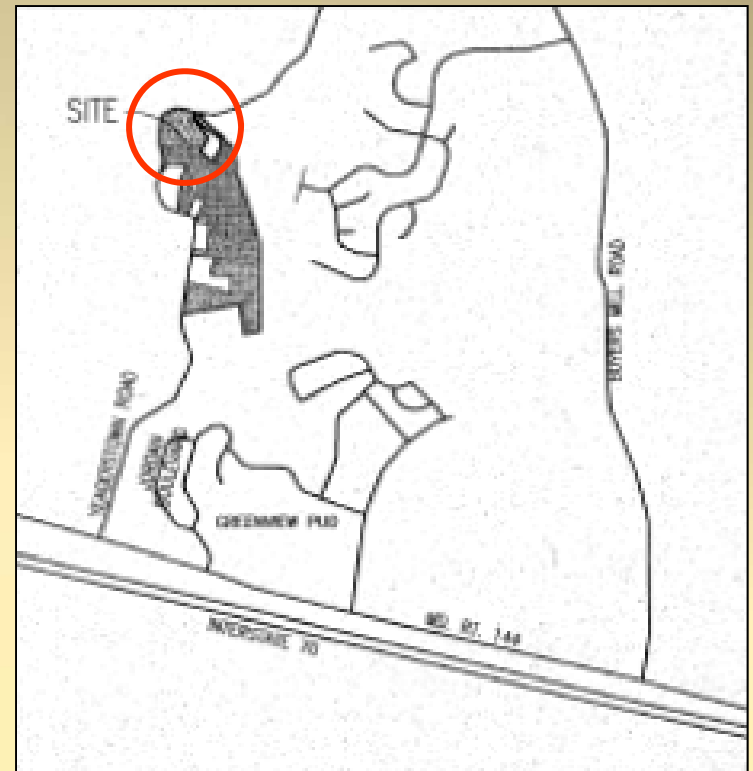


# SBA Temple



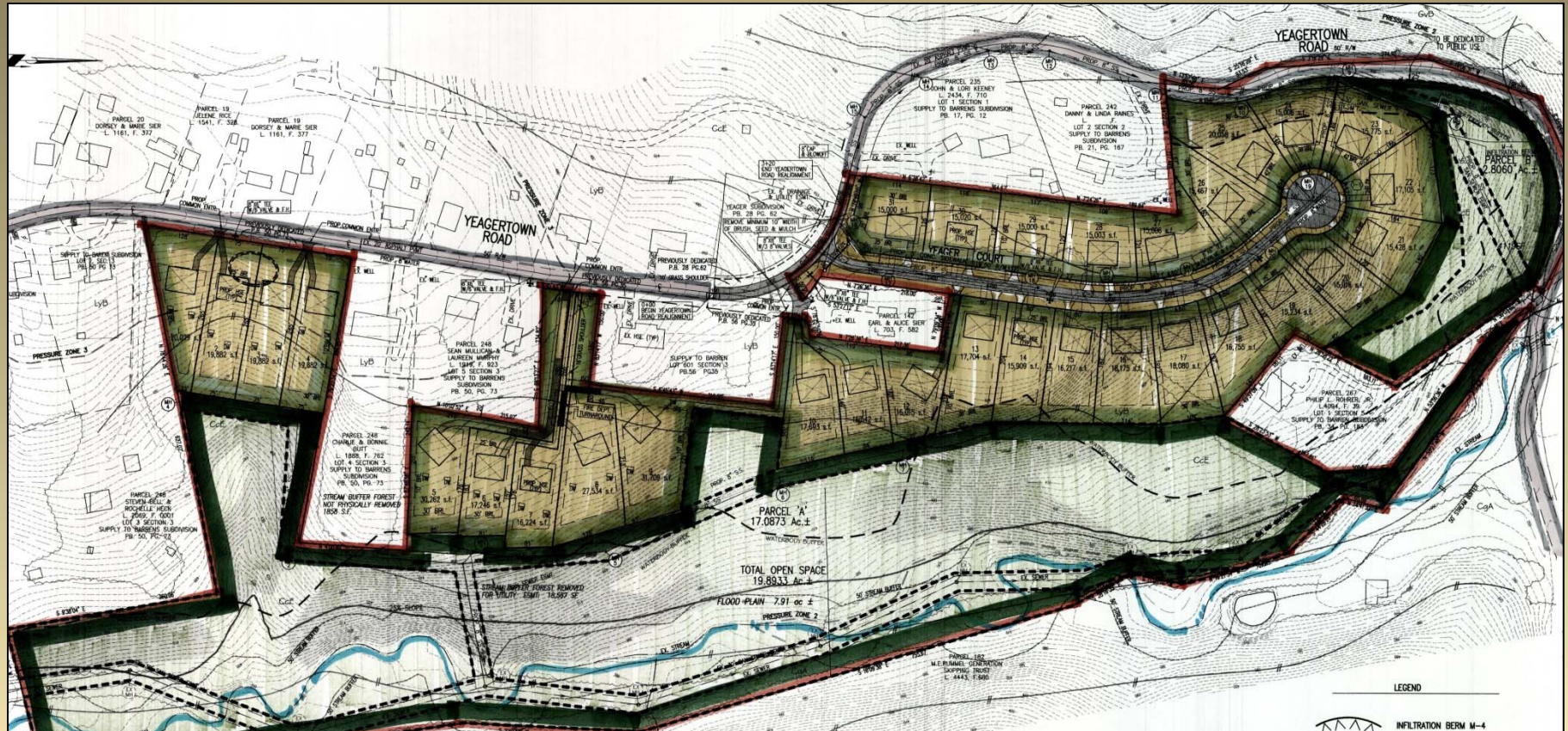
# Supply to Barren

- ❑ Request: Preliminary Subdivision Plan Approval
- ❑ Location: East side of Yeagertown Road, north of Rt 144 Old National Pike
- ❑ Total Use: 31 Residential Cluster lots. Also proposed is a new public street.
- ❑ Zoned: Residential (R-1), New Market Planning Region
- ❑ Applicant: Frall Developers, Inc.
- ❑ Engineer: VanMar Associates



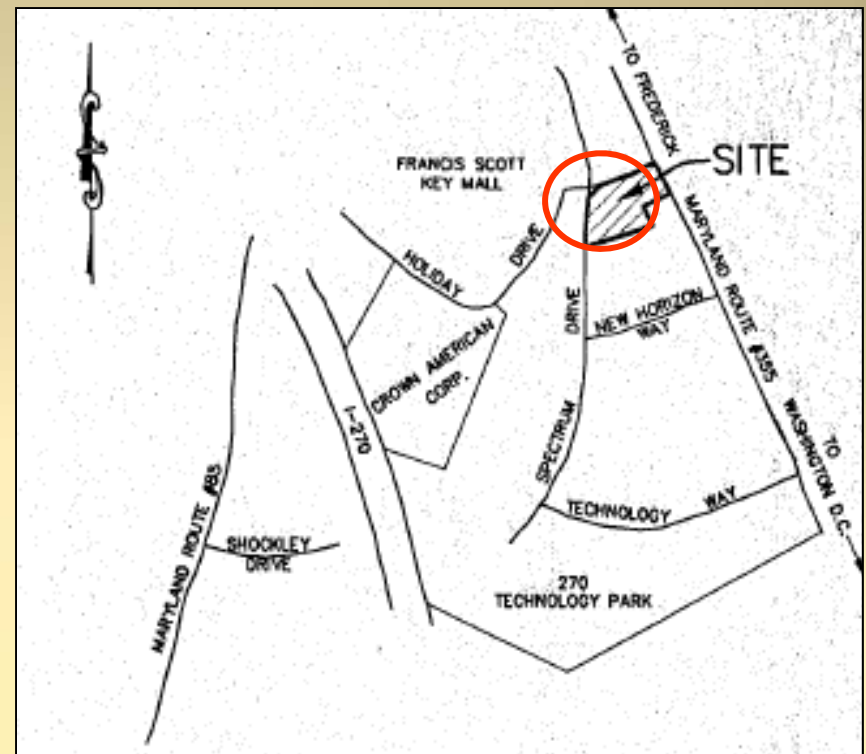


# Supply to Barren



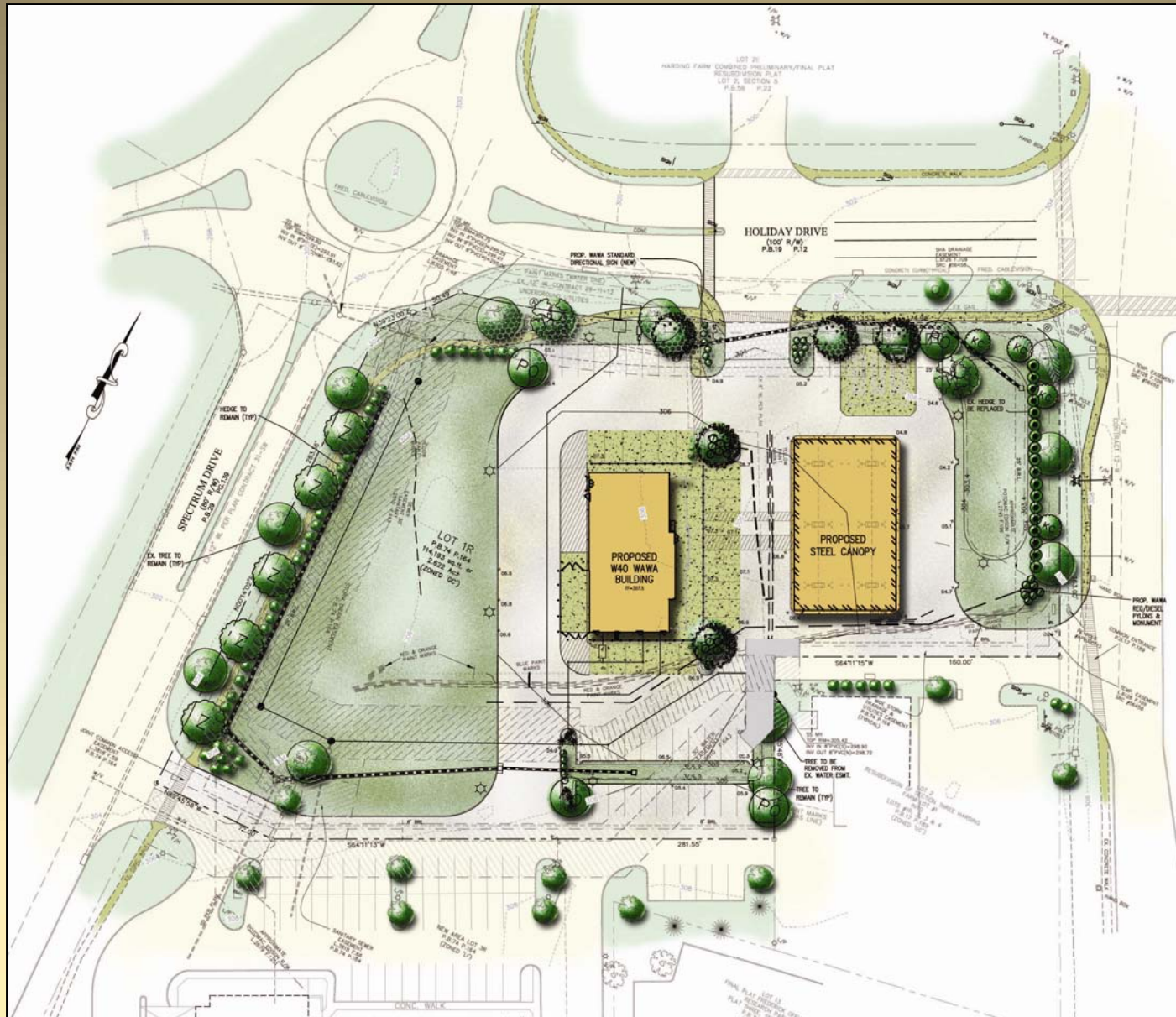
# Wawa Convenience Store

- ❑ Request: Site Plan approval
- ❑ Location: Urbana Pike MD Rt 355 and Holiday Drive
- ❑ Total Use: 4,149 square foot convenience store with 12 fuel islands, on a 2.62 acre site
- ❑ Zoned: General Commercial (GC), Frederick Planning Region
- ❑ Applicant: Frederick Investors, Inc.
- ❑ Engineer: Harris, Smariga & Associates





# Wawa Convenience Store





## Board of Appeals

### **B-12-10 Grant County Mulch Inc.**

Requesting a special exception to expand a previously approved use (previous case # B-11-07) with additional acreage and grinder for wood waste recycling located on the north side of Manor Wood Road (6702 Manor Wood Road, Tax Map 95, Parcels 81, 1137, 1139, & 1140) Zoned Agricultural (A).

### **B-12-11 Springfield Manor Winery and Distillery c/o John & Amie St. Angelo**

Requesting a special exception to establish a Country Inn to be used with Farm Winery, located on west side of Auburn Road, 1,200 Ft. north of Baugher Road, South (11836 Auburn Road, Tax Map 32, Parcel 24) Zoned Agricultural (A)

### **B-11-02 Liberty Towers, LLC- Court Remand Items**

As per Circuit Court Opinion dated April 20, 2012<sup>th</sup> and Circuit Court Remand Order dated June 11<sup>th</sup>, 2012, the Board of Appeals shall examine the Applicants' 5 year plan and clarified drawings which were found by the Court to be insufficient in previous application materials. **This hearing is for these two items ONLY.**