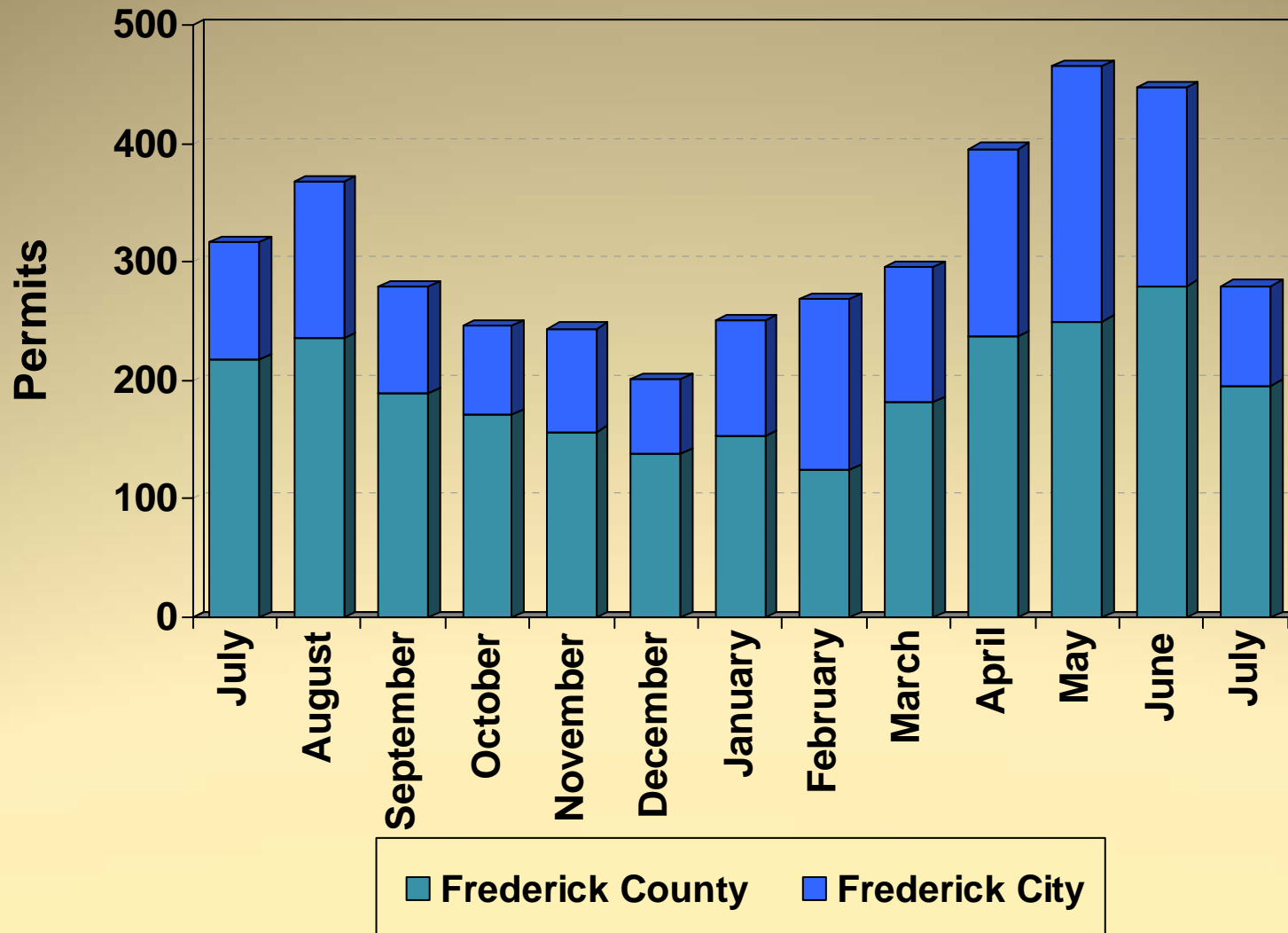


Community Development Division

- September 14, 2012
- Development Data/Project

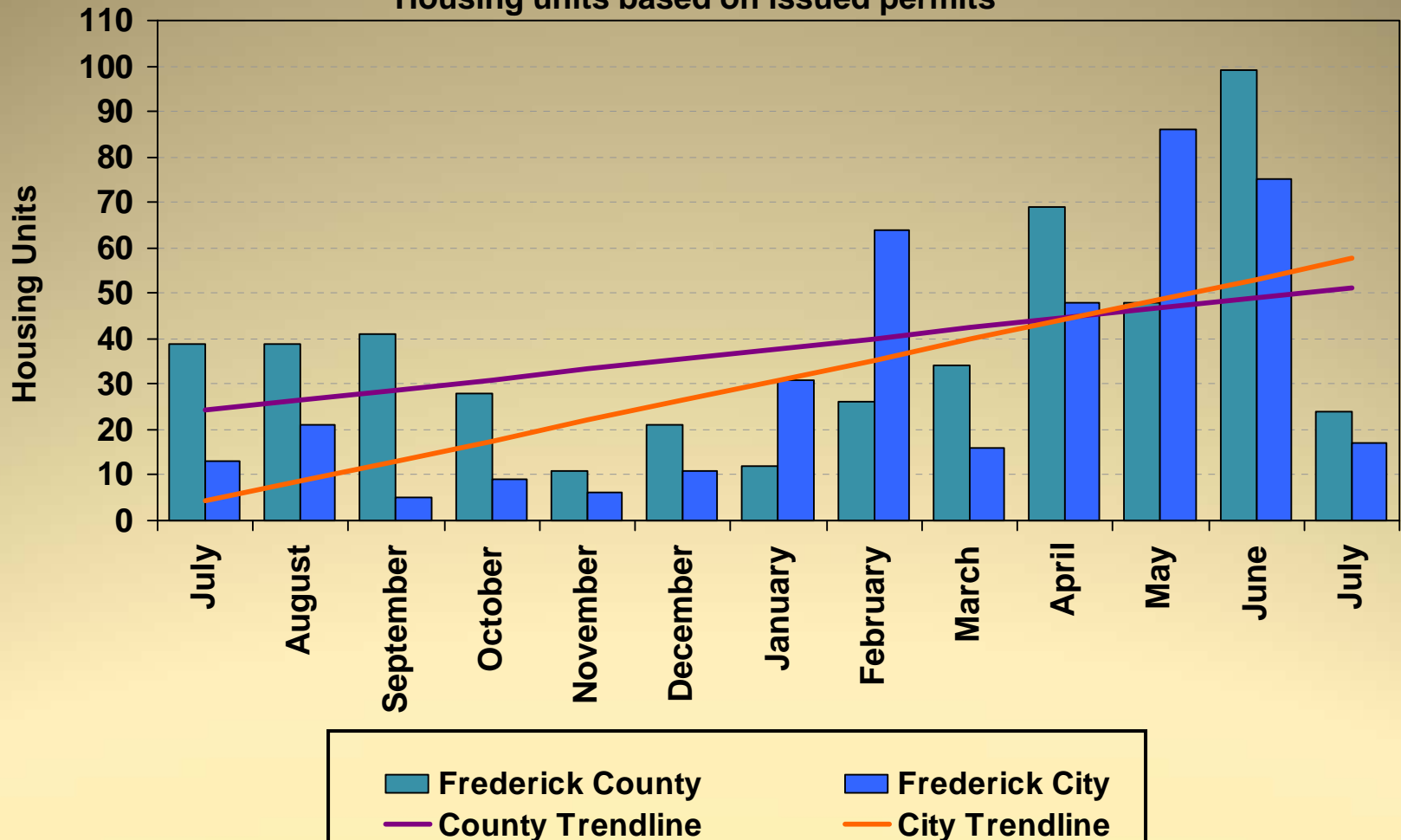


Building Permits Issued 2011 - 2012



Housing Unit Construction 2011 - 2012

Housing units based on issued permits



12 Month Total (July 2011 – June 2012): 841 Units

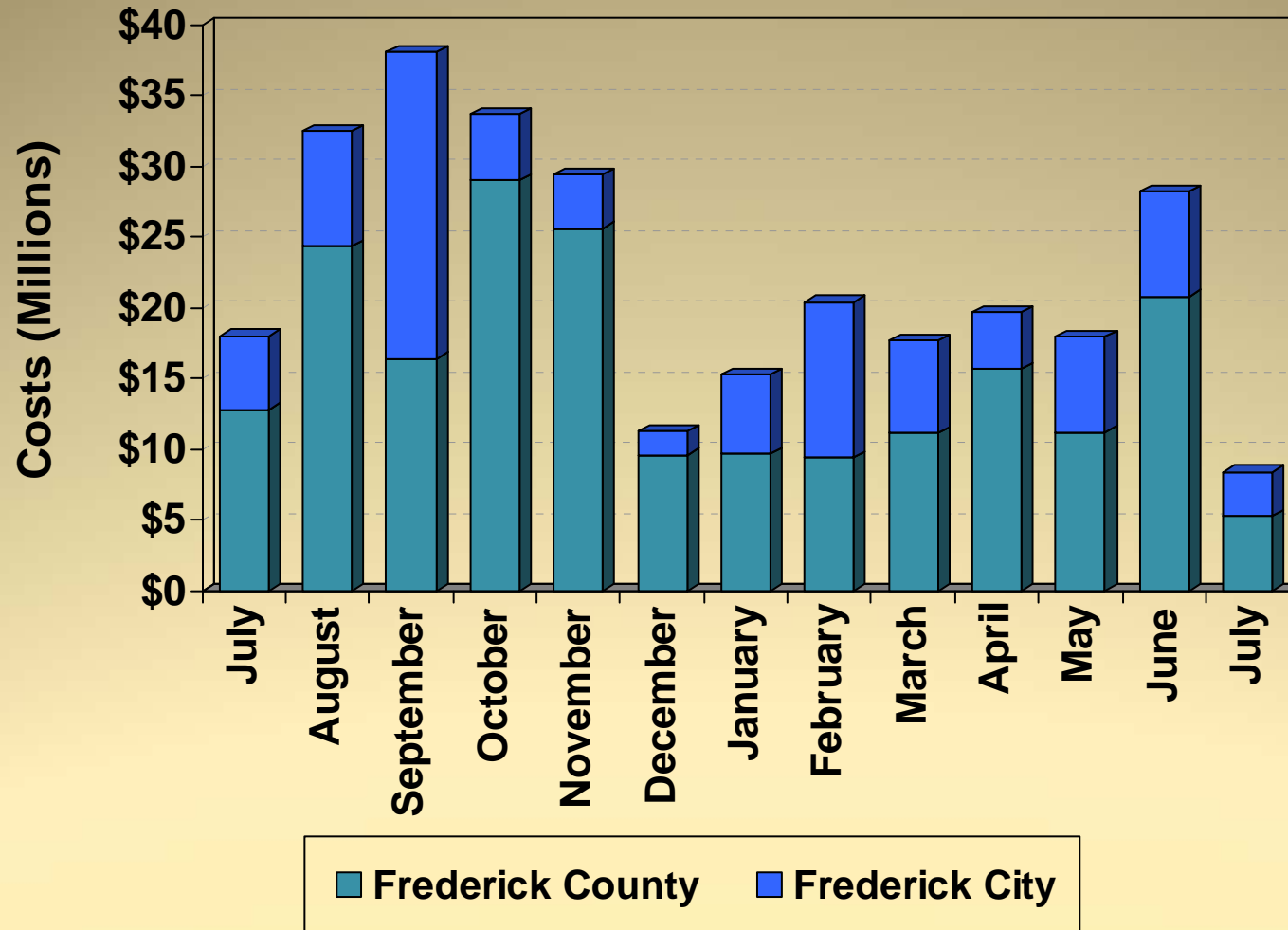
Housing Unit Construction

Comparison of Current Month and YTD Units

Current Month – July			
Year	County	City	Total
2012	24	17	41
2011	39	13	52
2010	21	2	23
2009	45	15	60
2008	38	4	42
5 Year Avg.	33	10	44

YTD – July			
Year	County	City	Total
2012	312	337	649
2011	284	57	341
2010	358	116	474
2009	316	130	446
2008	270	55	325
5 Year Avg.	308	139	447

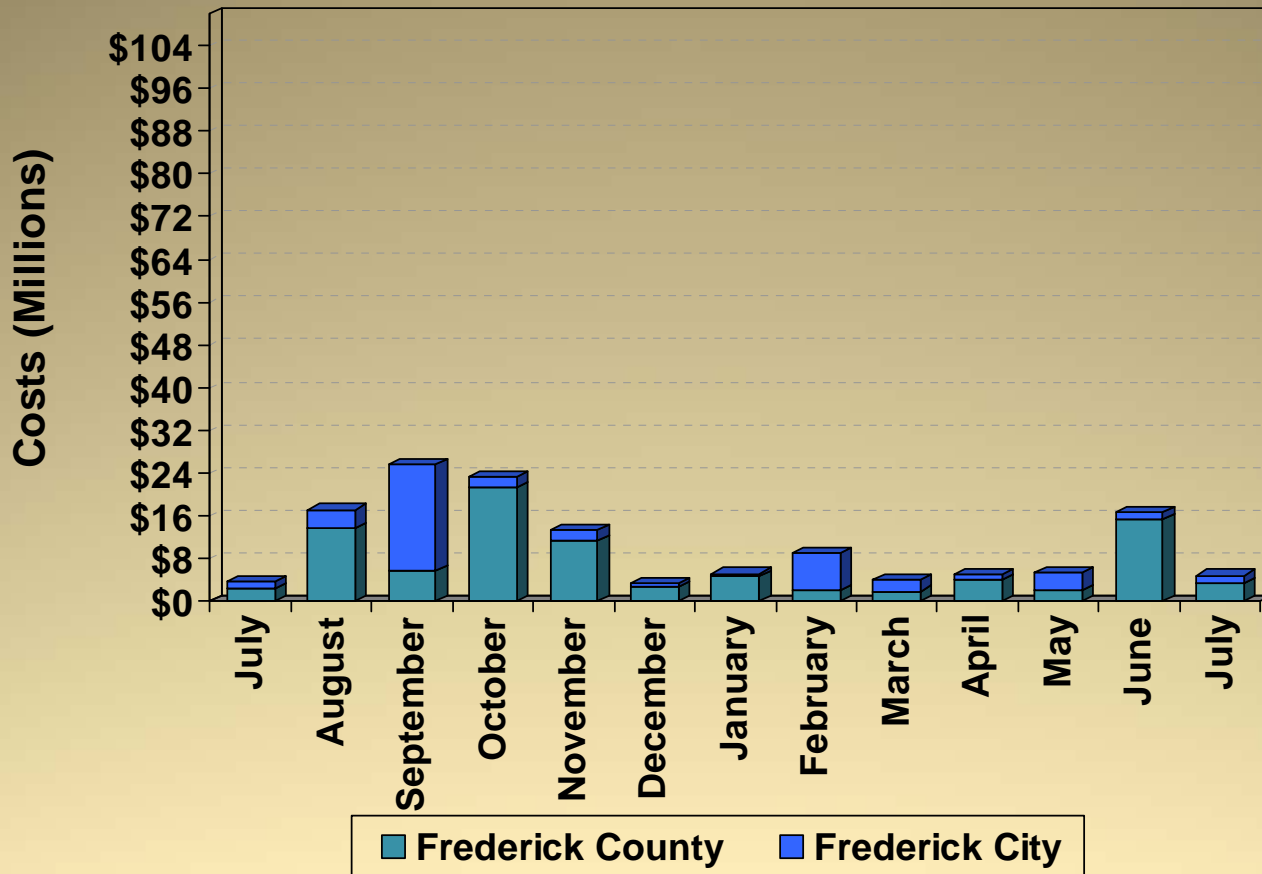
Construction Costs 2011 - 2012



Costs based on issued permits

Commercial Construction Costs

2011 - 2012



Cost per month:

Costs based on issued permits

October 2011 City – Medimmune, Inc (\$1.3M)

November 2011 Co. – Mount St. Mary's University accessory (\$4.5M), Lonza Walkersville, Inc. alteration (\$2M), Tractor Supply Company addition (\$1.5M), Cong. Of Jehovah's Witnesses new (\$1.2M)

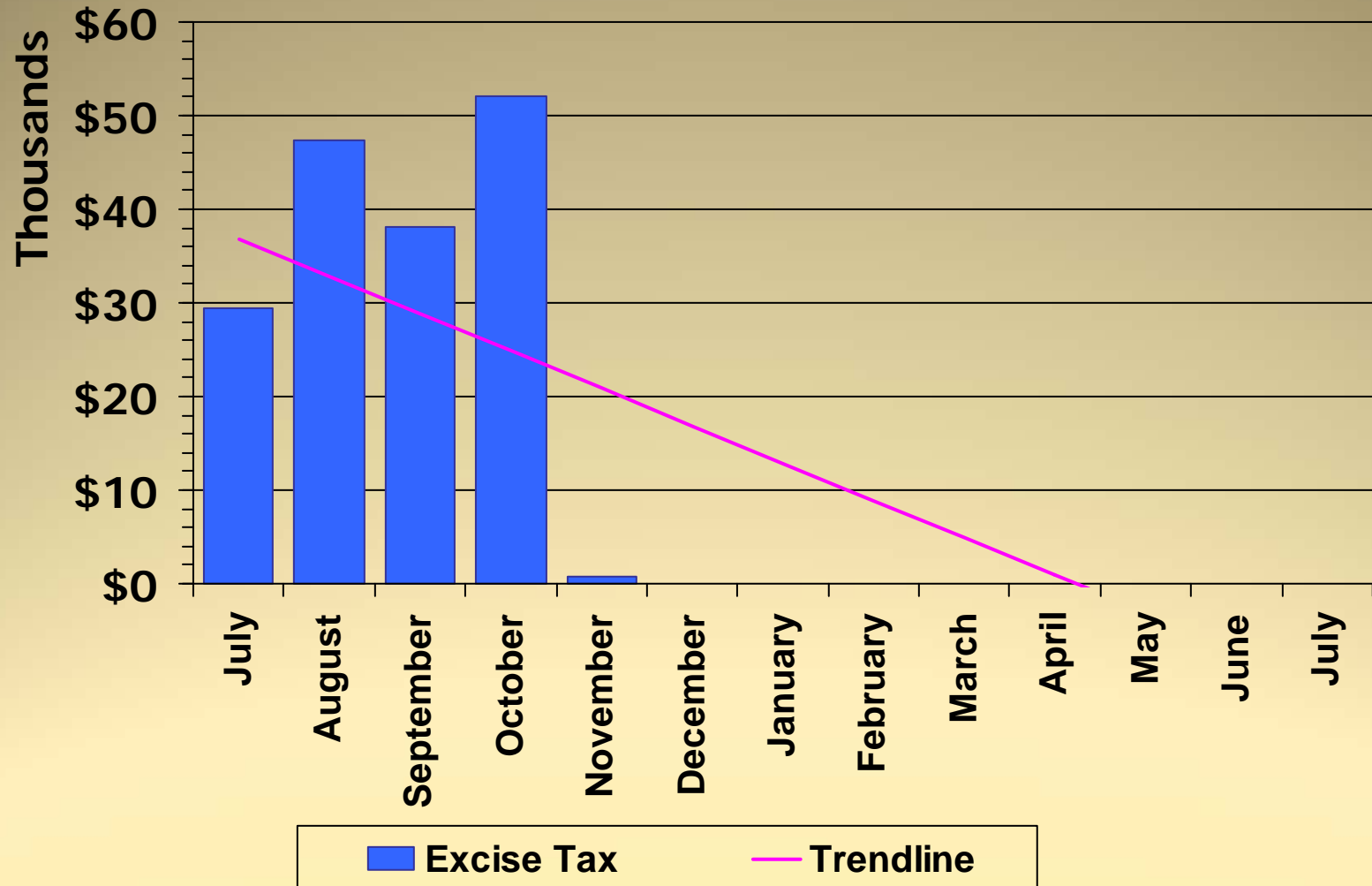
December 2011 Co. – Brunswick Crossing, LLC new (\$1.5M)

January 2012 Co. – Mount St. Mary's University accessory (\$1.4M)

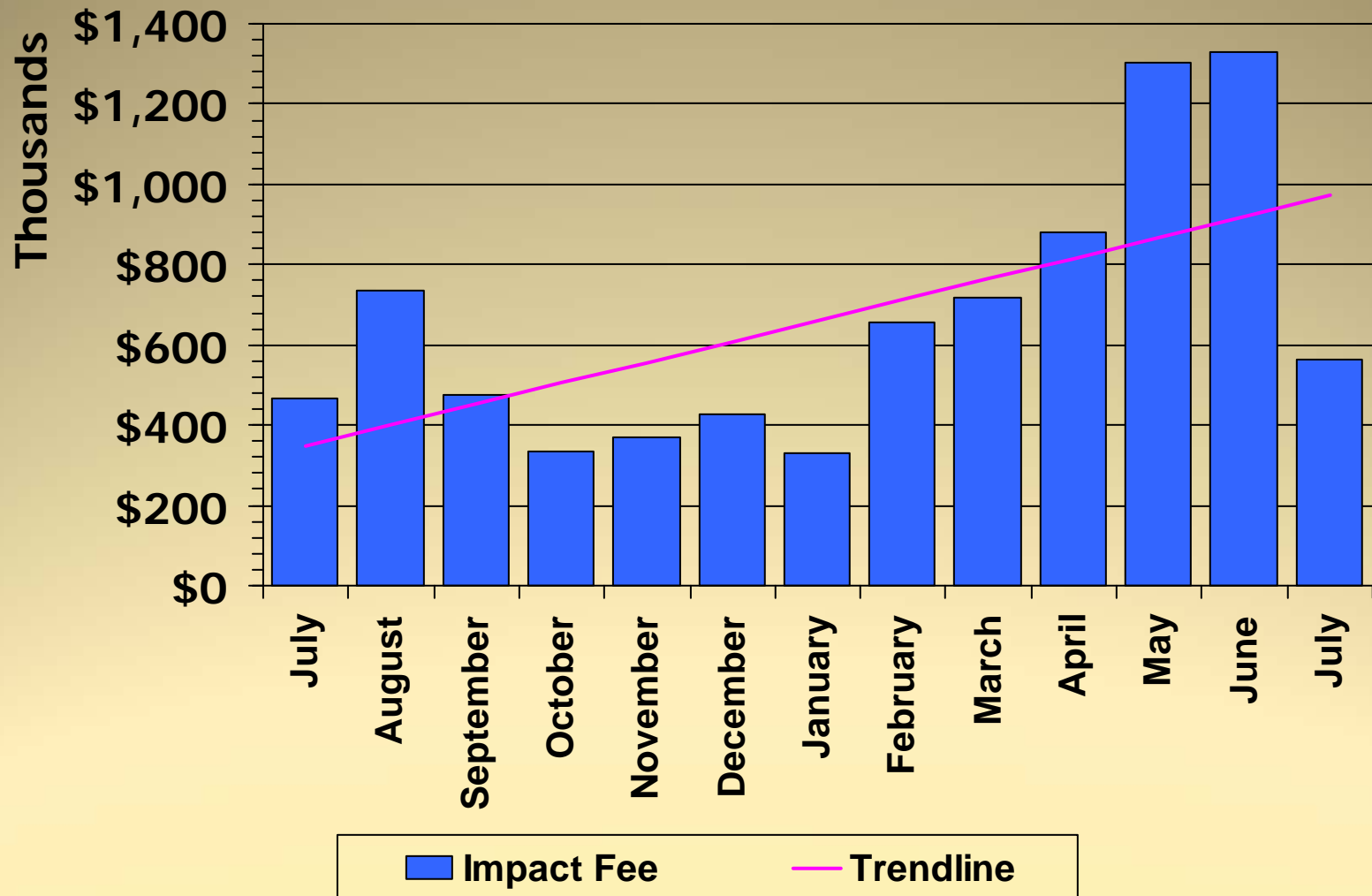
February 2012 City – Market Square at Frederick LLC new (\$5.1M)

April 2012 Co. – Mount Saint Mary's Univ. Visitor Center new (\$2.3M)

Excise Tax 2011 - 2012



Impact Fee 2011 - 2012

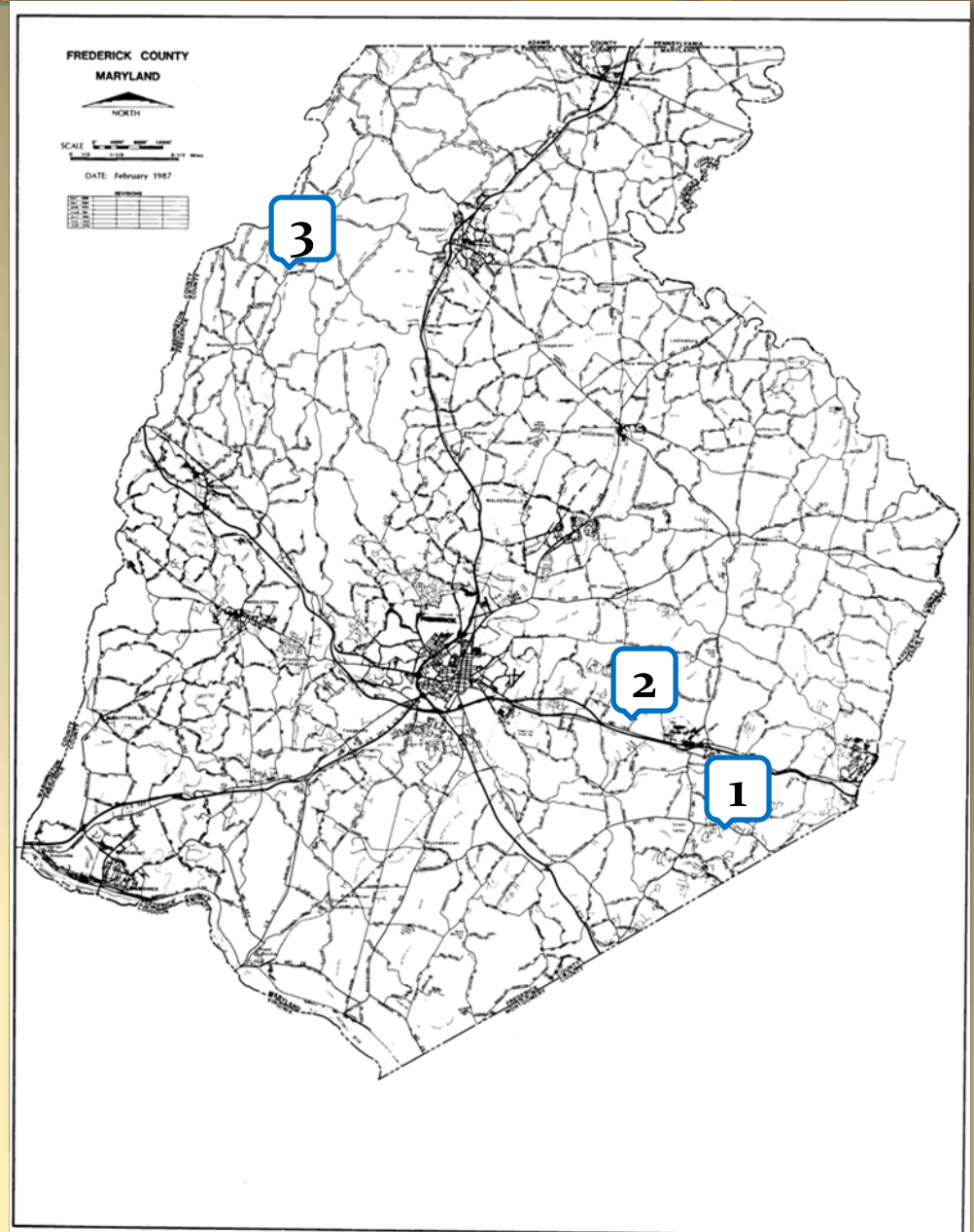


LIST OF PROJECTS

(upcoming FcPc/BOA meetings)

Projects in the County

1. Manorwood, Lots 95-97
2. Supply to Barren
3. B-12-09 Donald Hurley, Rickey Hurley and Jeffrey & Erna Green
4. B-11-02 Liberty Towers LLC-
Discussion of Court Ruling

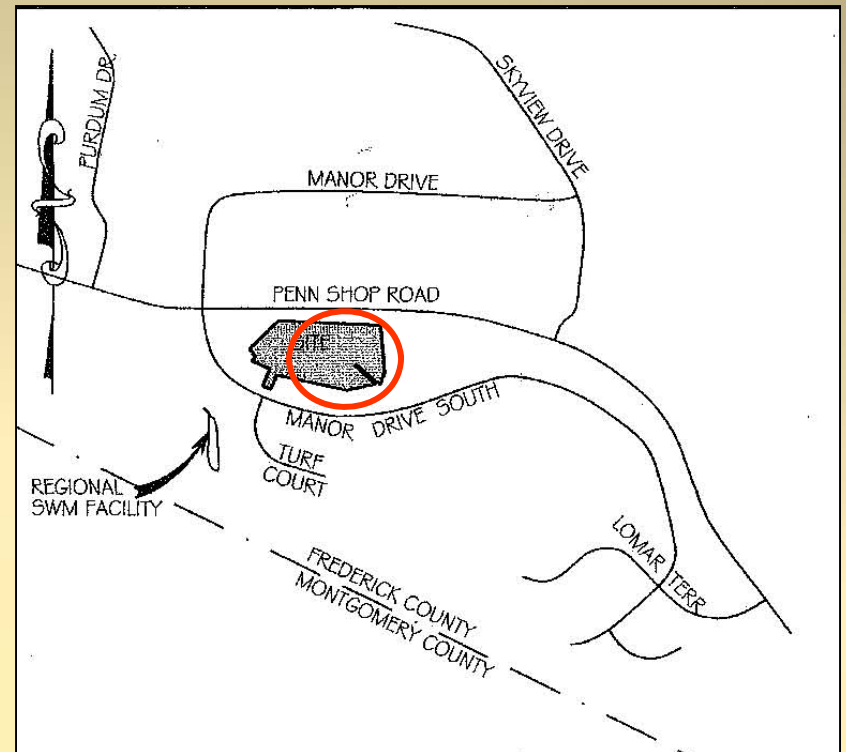




Projects in the County

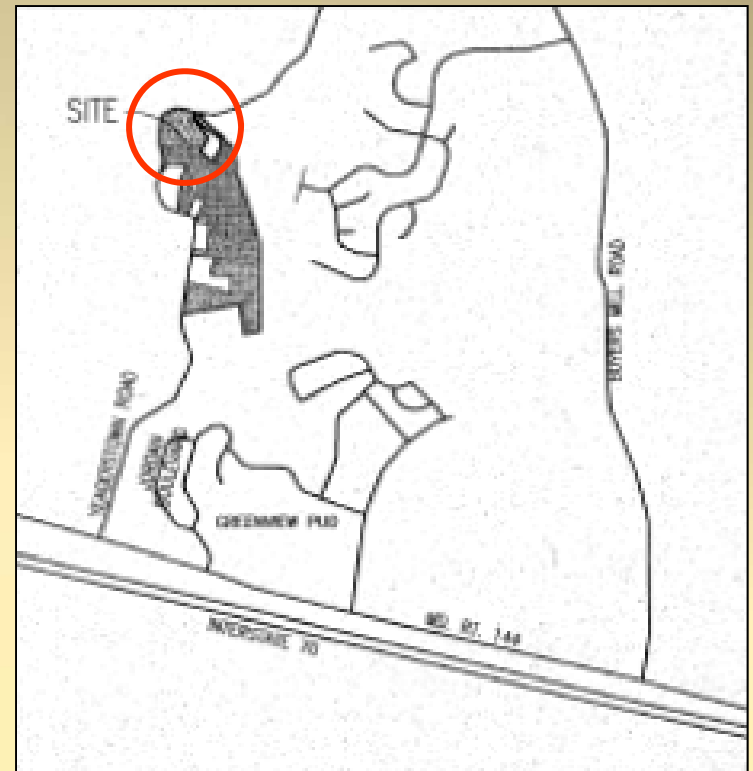
Manorwood, Lots 95-97

- ❑ Request: Residential Cluster Preliminary Plan Reapproval
- ❑ Location: Manor Drive South, opposite Turf Court South
- ❑ Total Use: 13 Residential Cluster lots (previously approved in 1994).
- ❑ Zoned: Residential (RI), New Market Planning Region
- ❑ Applicant: P.S.R.P, Inc.
- ❑ Engineer: Vanmar Assoc.

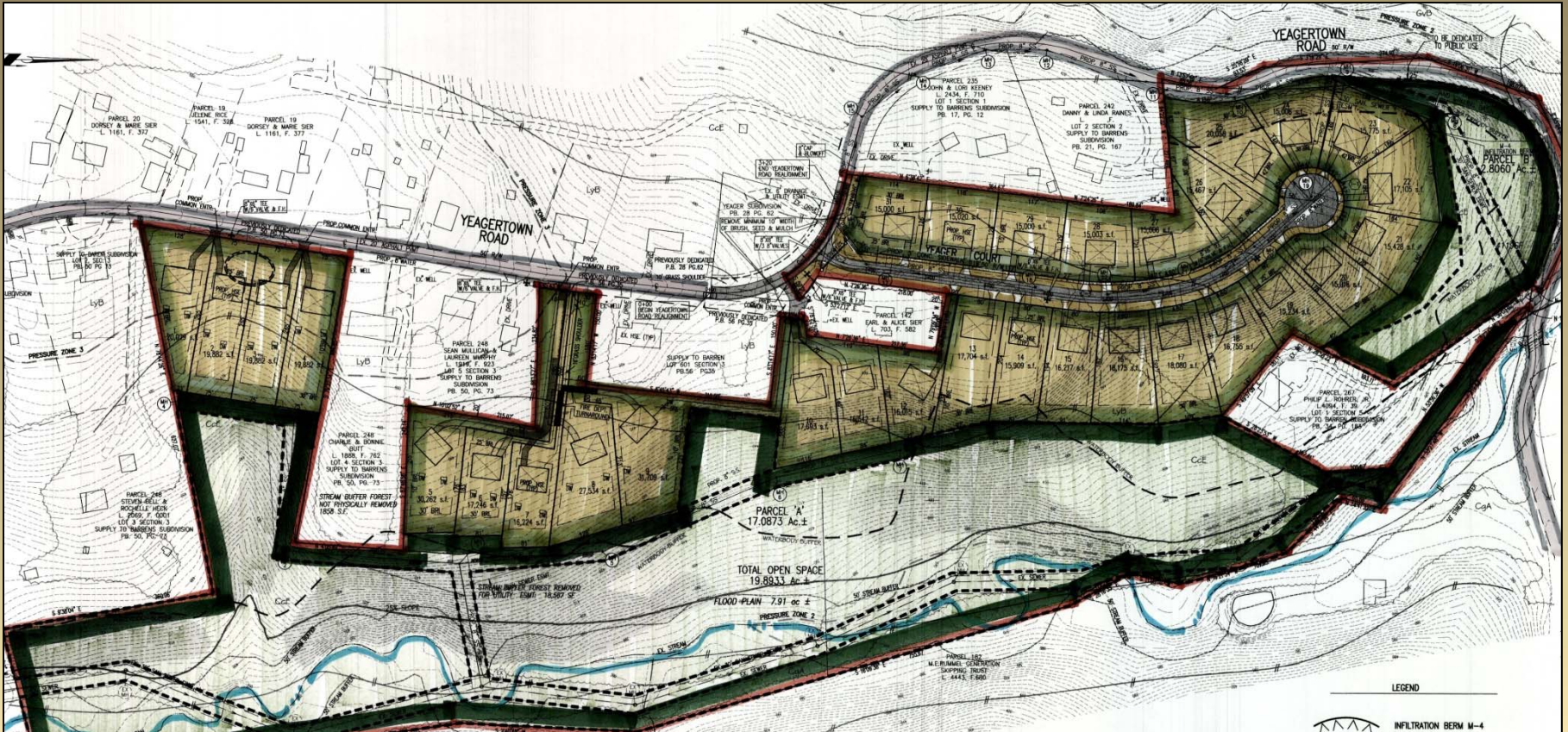


Supply to Barren

- ❑ Request: Concept Plan Approval
- ❑ Location: East side of Yeagertown Road, north of Rt 144 Old National Pike
- ❑ Total Use: 31 Residential Cluster lots. Also proposed is a new public street.
- ❑ Zoned: Residential (R-1), New Market Planning Region
- ❑ Applicant: Frall Developers, Inc.
- ❑ Engineer: VanMar Associates



Supply to Barren



Board of Appeals

B-12-09 Donald Hurley, Rickey Hurley and Jeffrey & Erna Green

Requesting a variance from the required minimum lot area, the minimum lot width and the minimum side yard setbacks for lots in order to complete addition plat process, located on the south side of Wigville Road, (Tax Map 24, Parcels 54 & 55) Zoned Resource Conservation (RC).

B-11-02 Liberty Towers LLC- Discussion of court Ruling