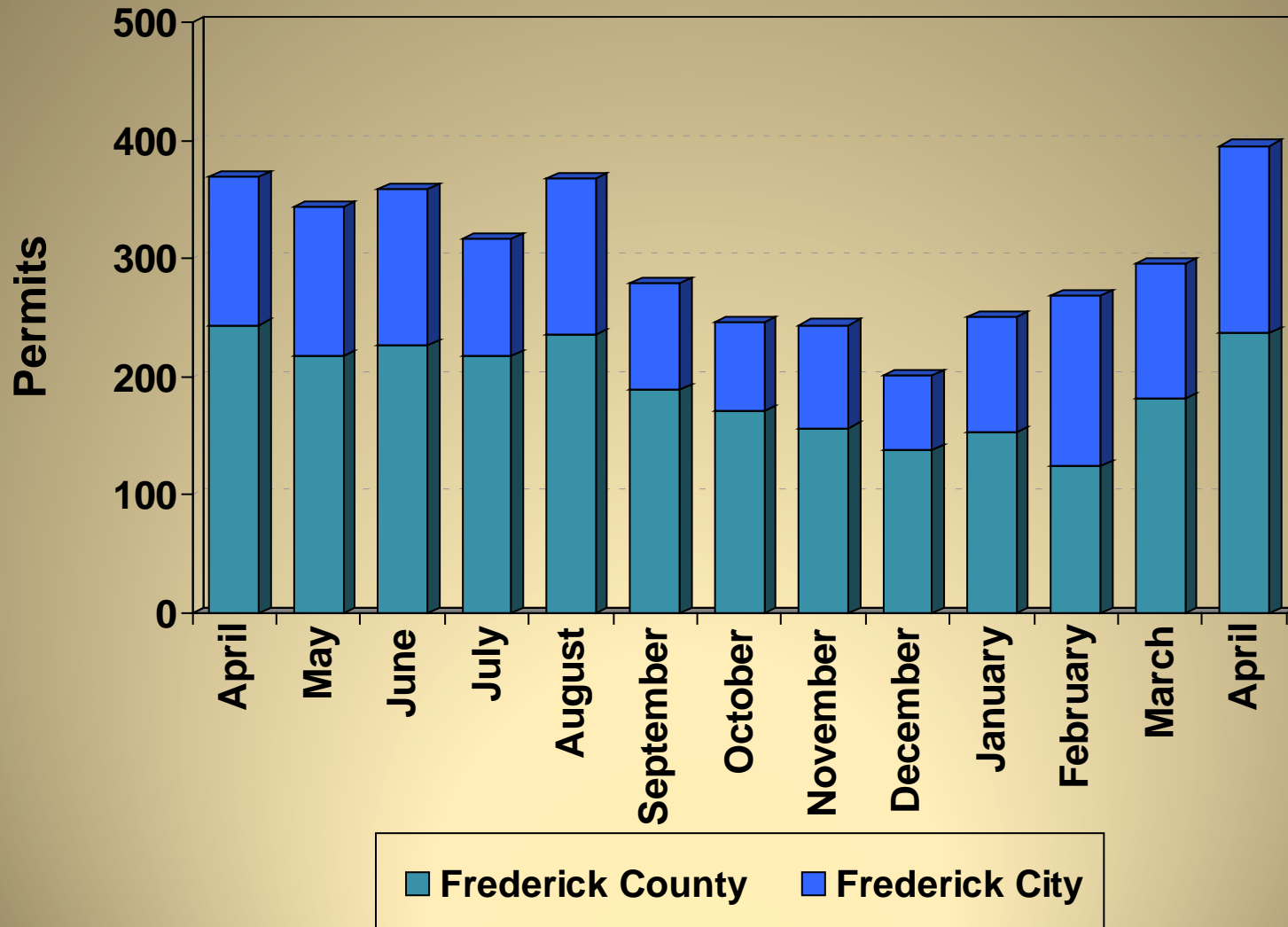


Community Development Division

- June 11, 2012
- Development Data/Project

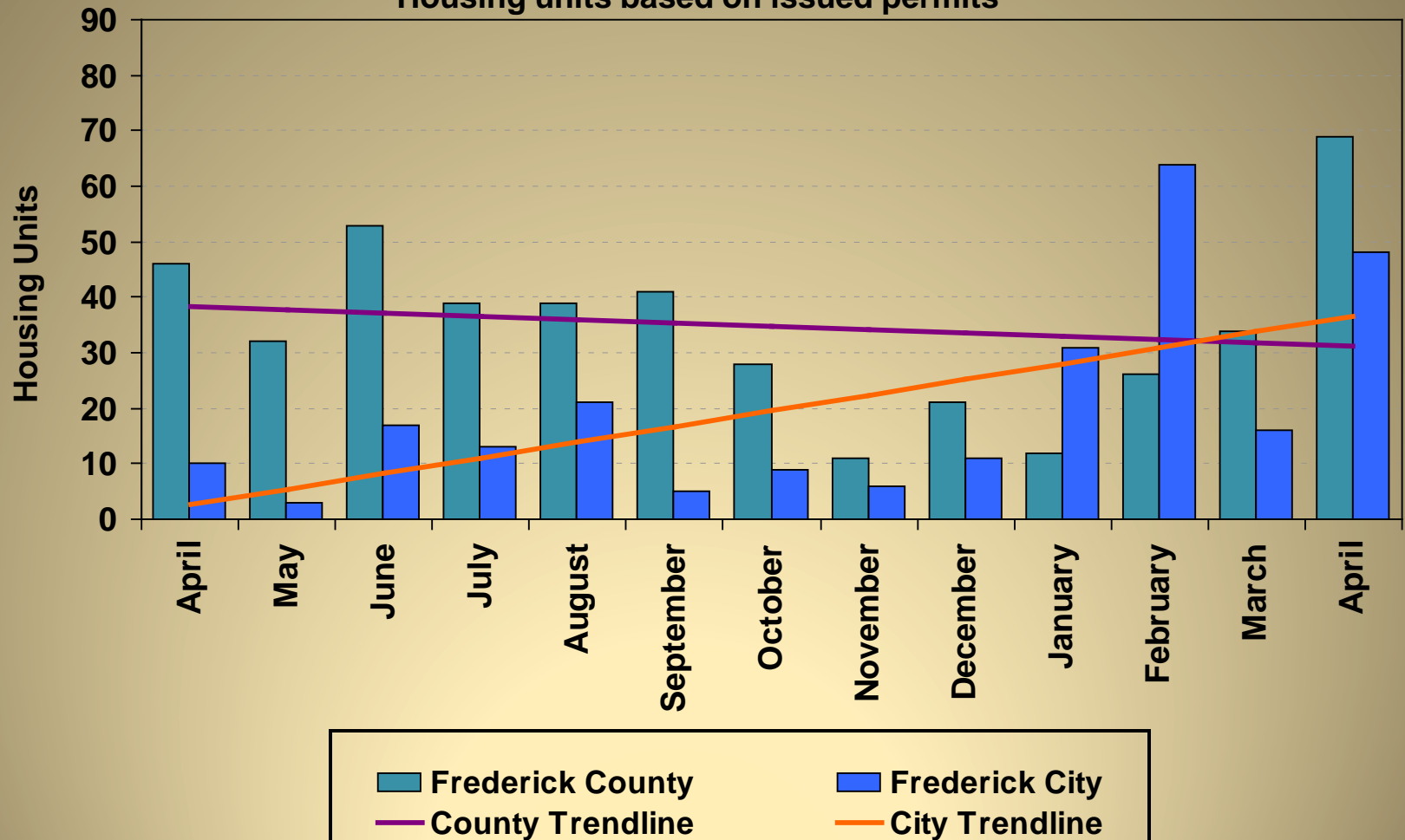


Building Permits Issued 2011 - 2012



Housing Unit Construction 2011 - 2012

Housing units based on issued permits



12 Month Total (April 2011 – March 2012): 649 Units

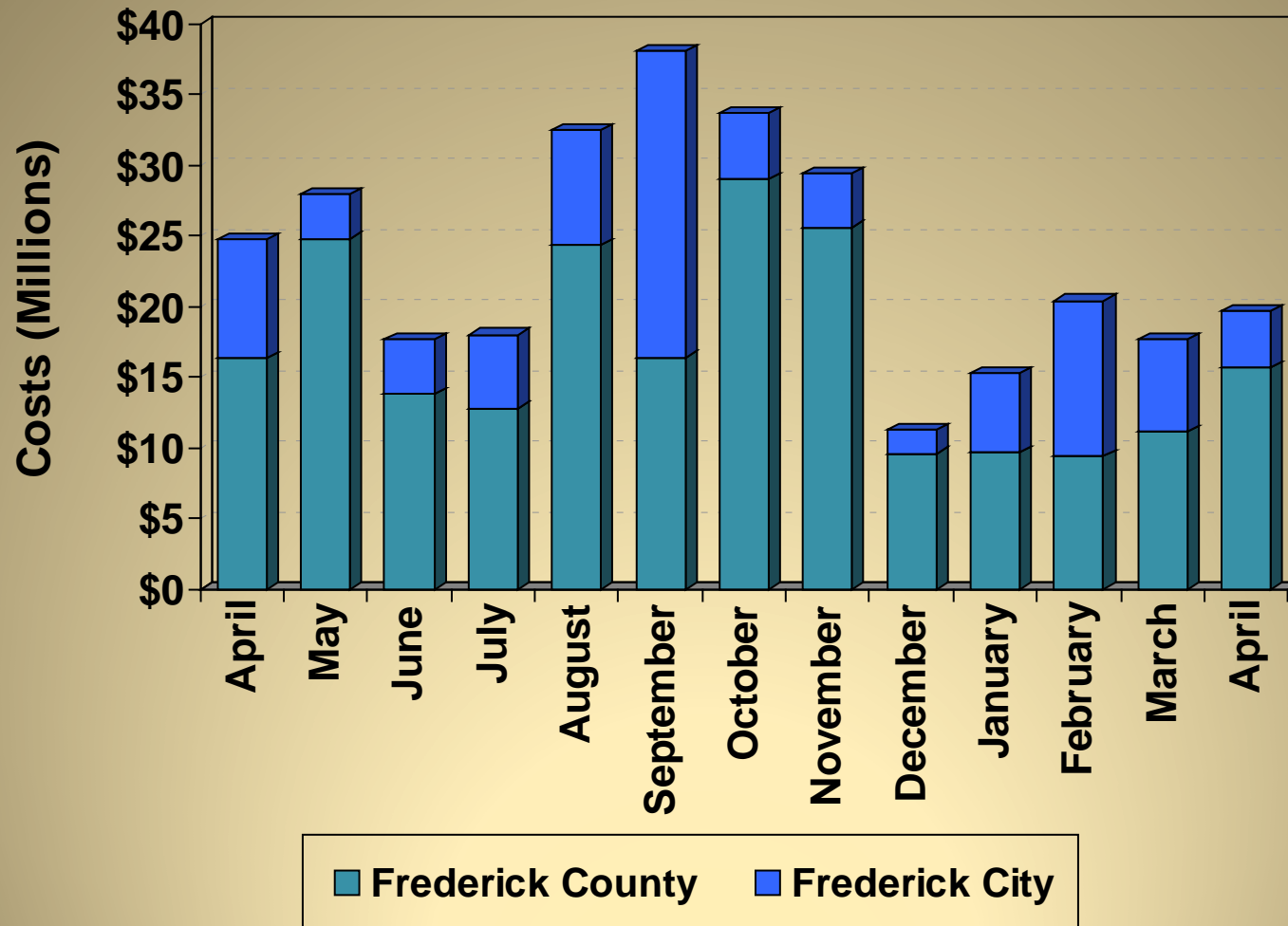
Housing Unit Construction

Comparison of Current Month and YTD Units

Current Month – April			
Year	County	City	Total
2012	69	48	117
2011	46	10	56
2010	43	18	61
2009	46	12	58
2008	34	4	38
5 Year Avg.	48	18	66

YTD – April			
Year	County	City	Total
2012	141	159	300
2011	160	24	184
2010	202	83	285
2009	143	61	204
2008	155	43	198
5 Year Avg.	160	74	234

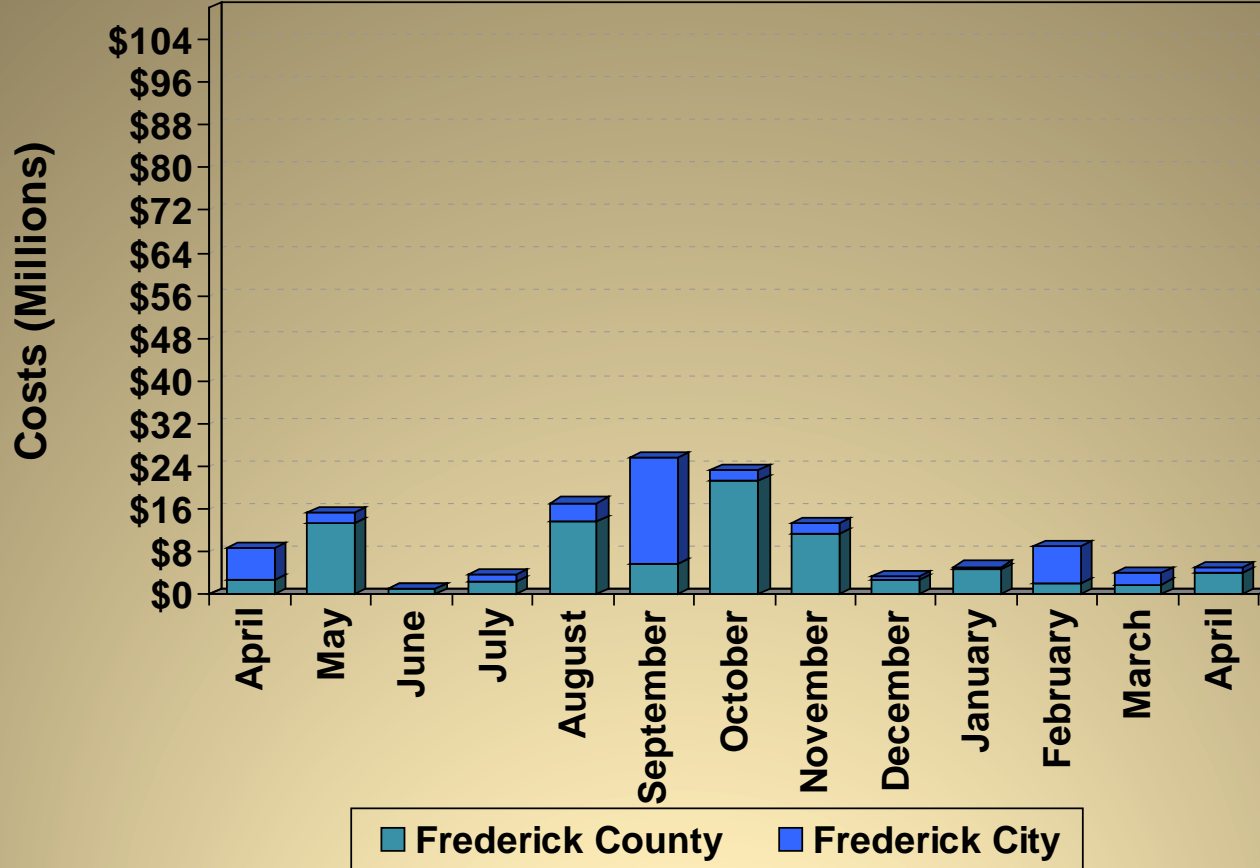
Construction Costs 2011 - 2012



Costs based on issued permits

Commercial Construction Costs

2011 - 2012



Cost per month:

Costs based on issued permits

October 2011 City – Medimmune, Inc (\$1.3M)

November 2011 Co. – Mount St. Mary's University accessory (\$4.5M), Lonza Walkersville, Inc. alteration (\$2M), Tractor Supply Company addition (\$1.5M), Cong. Of Jehovah's Witnesses new (\$1.2M)

December 2011 Co. – Brunswick Crossing, LLC new (\$1.5M)

January 2012 Co. – Mount St. Mary's University accessory (\$1.4M)

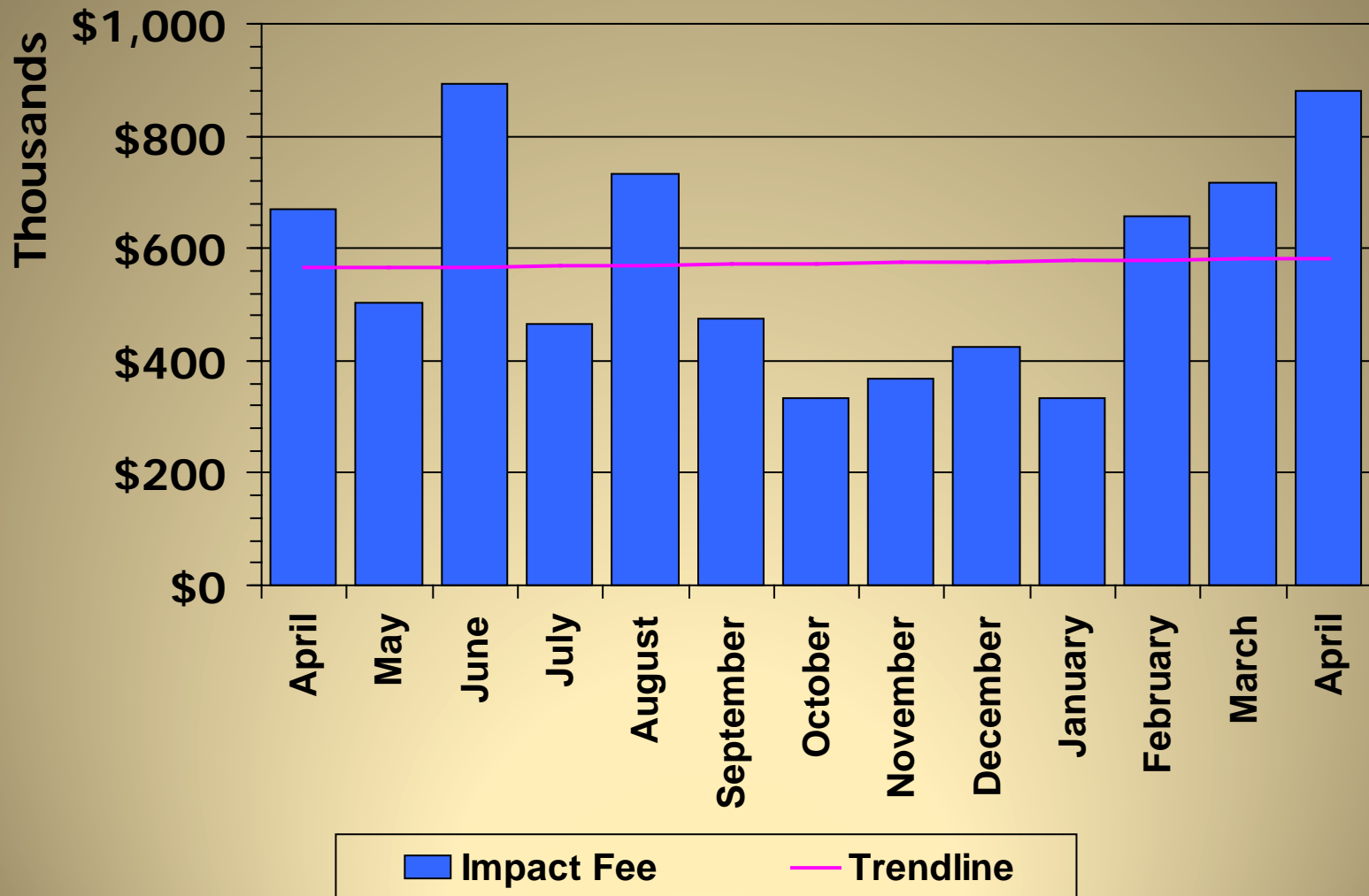
February 2012 City – Market Square at Frederick LLC new (\$5.1M)

April 2012 Co. – Mount Saint Mary's Univ. Visitor Center new (\$2.3M)

Excise Tax 2011 - 2012



Impact Fee 2011 - 2012

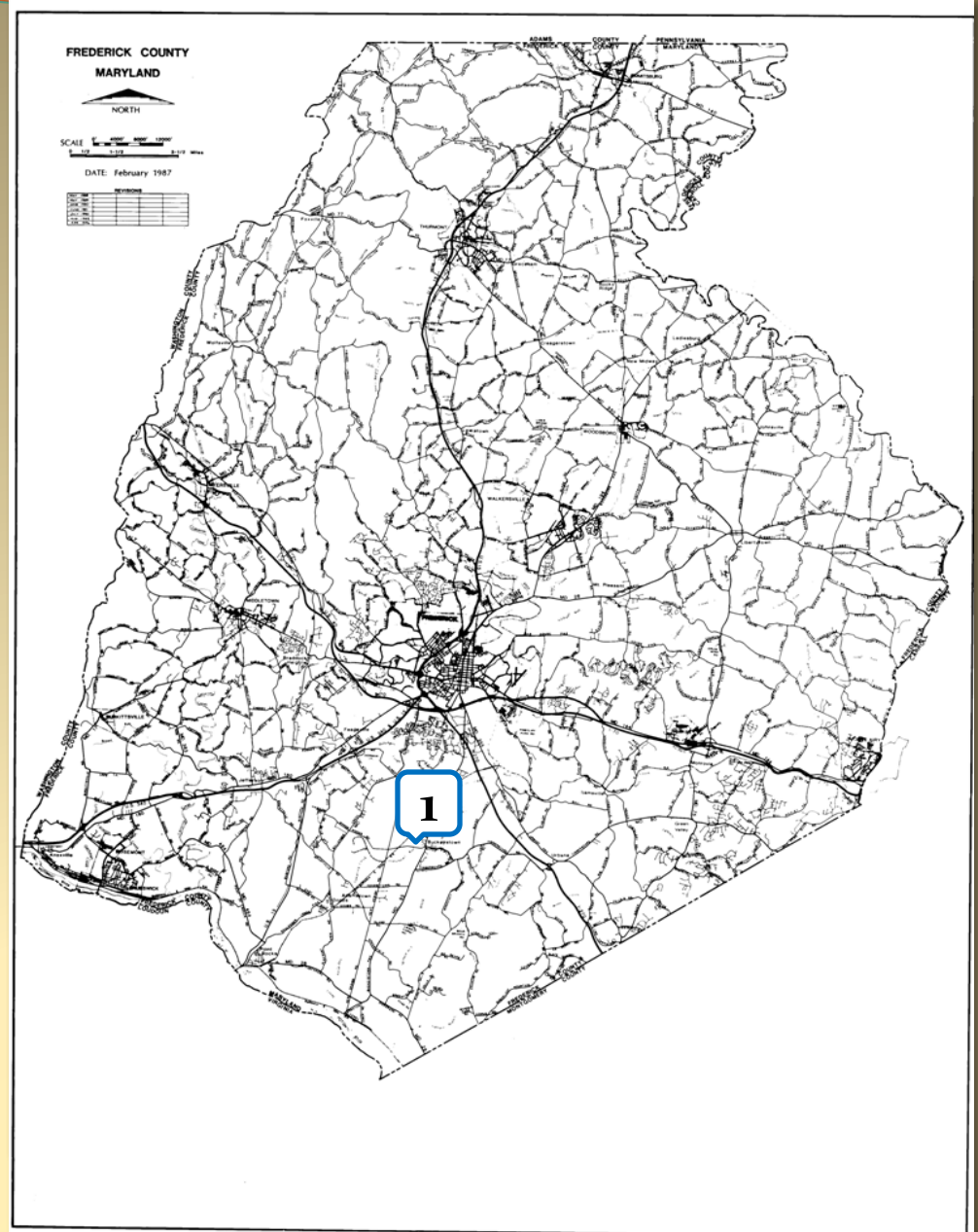


LIST OF PROJECTS

(upcoming FcPc/BOA meetings)

Projects in the County

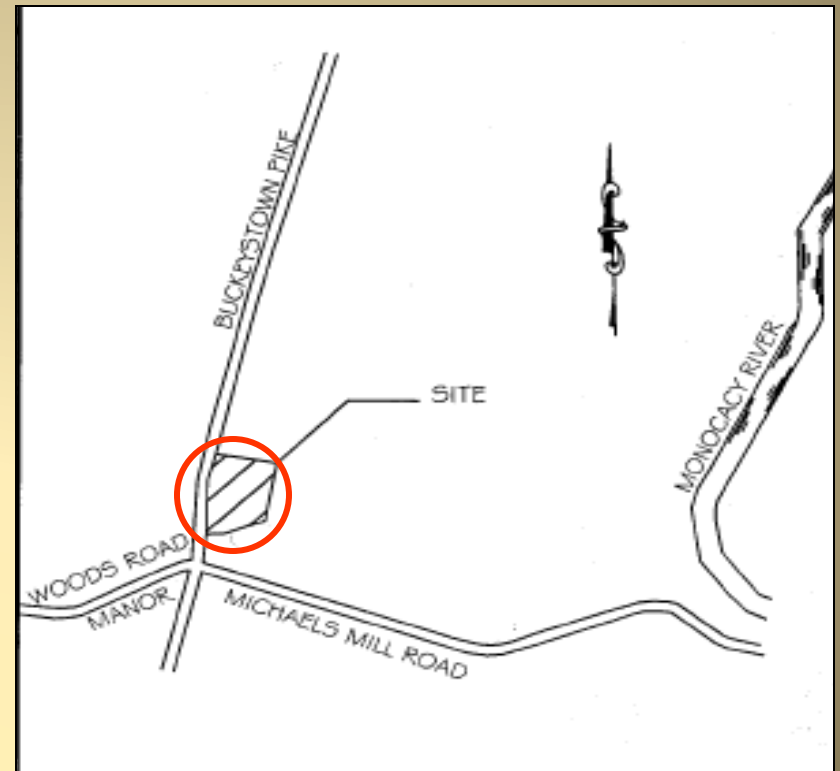
1. Alexander's & St. Thomas More Academy



Projects in the County

Alexander's & St. Thomas More Academy

- ❑ Request: Site Plan Approval
- ❑ Location: Buckeystown Pike 85, north of Michaels Mill Road
- ❑ Total Use: Elementary school within four of the six buildings on site, in addition to a 26 parking space area.
- ❑ Zoned: Village Center (VC), Adamstown Planning Region
- ❑ Applicant: St. Thomas More Academy
- ❑ Engineer: B & R Design Group, Inc.



Alexander's & St. Thomas More Academy

