

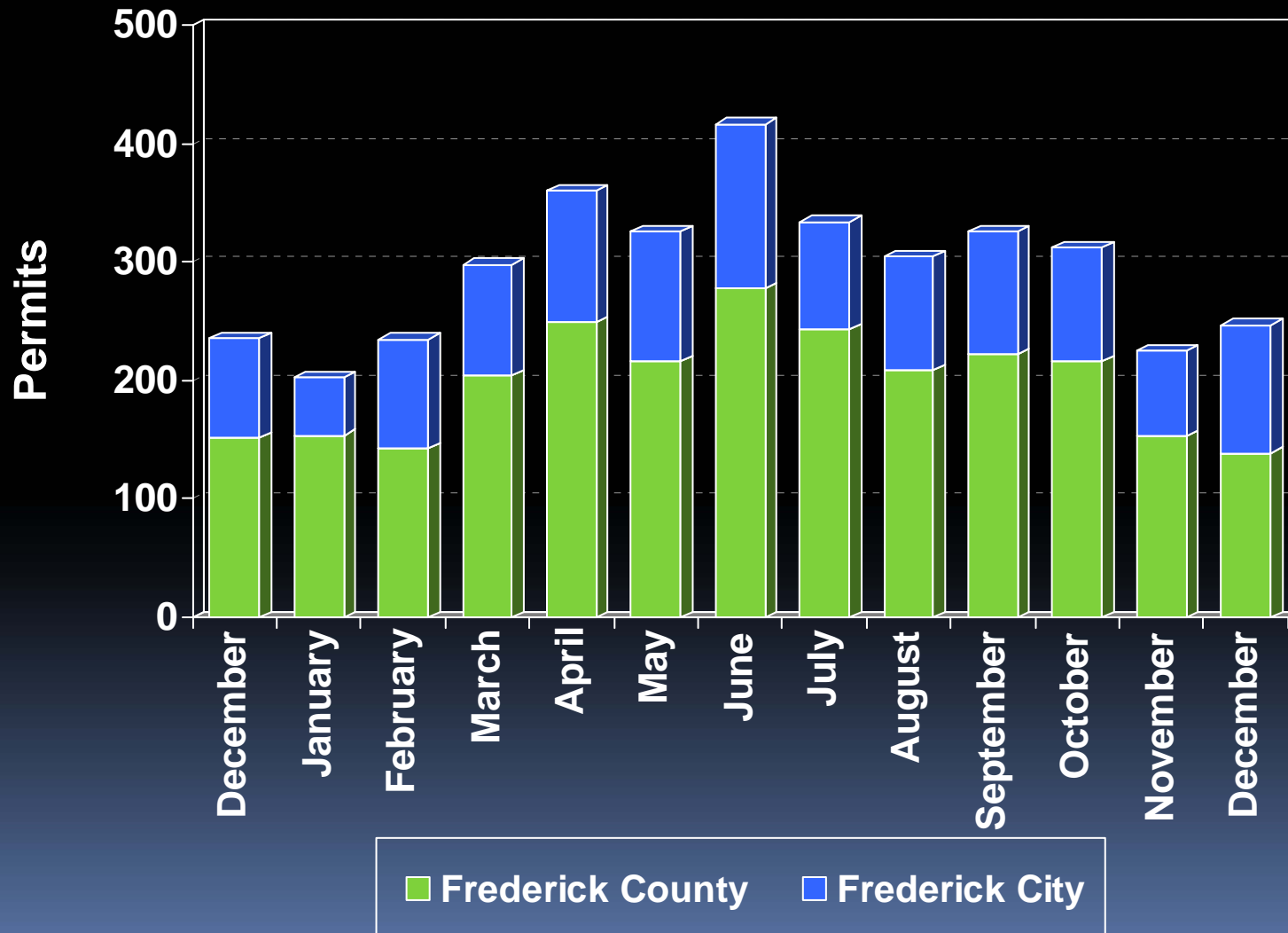


Division of Permitting and Development Review

- February 4, 2010
- Director's Development Data/Project Presentation to the County Commissioners

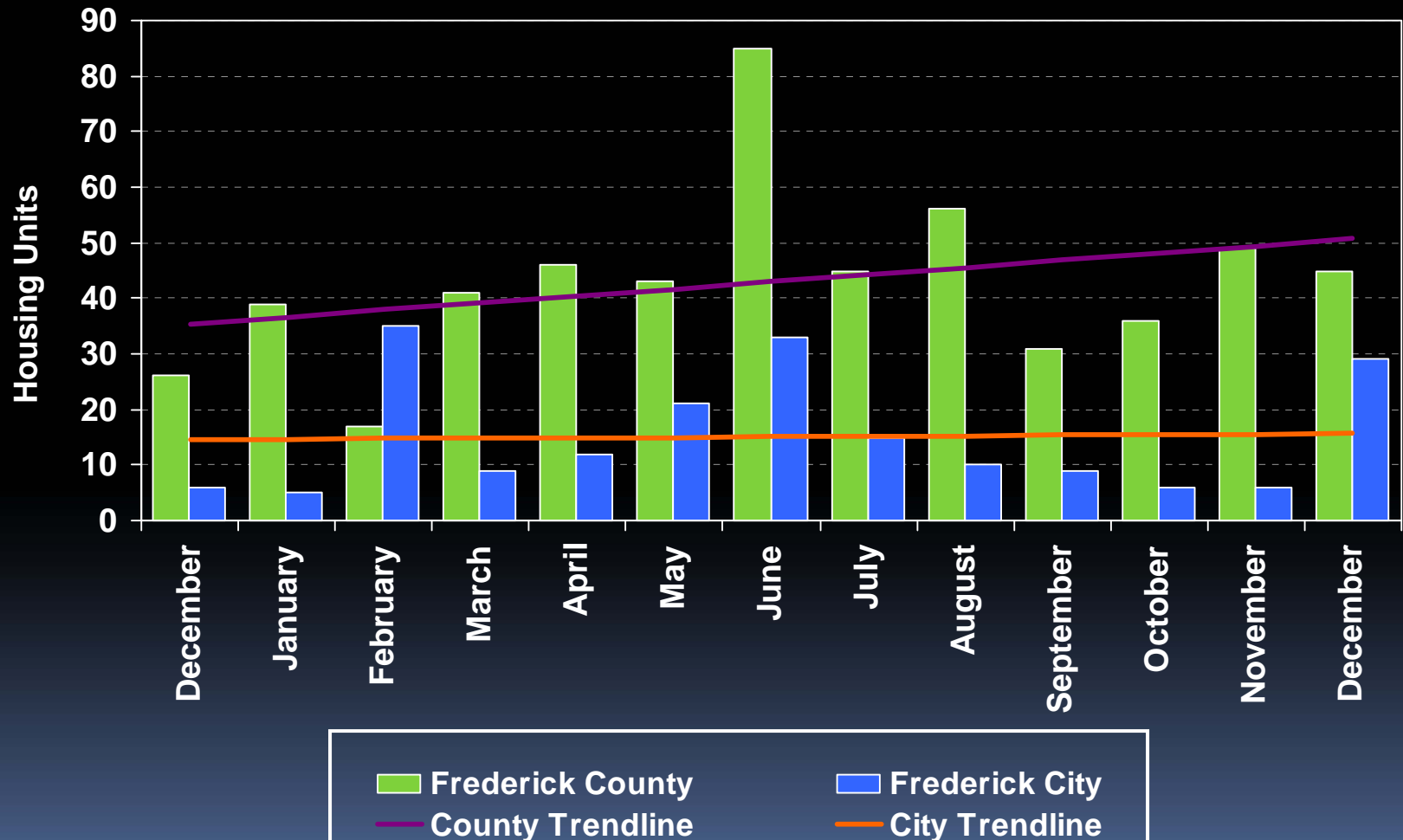


Building Permits Issued 2008 - 2009



Housing Unit Construction 2008 - 2009

Housing units based on issued permits



12 Month Total (January 2009 – December 2009): 723 units

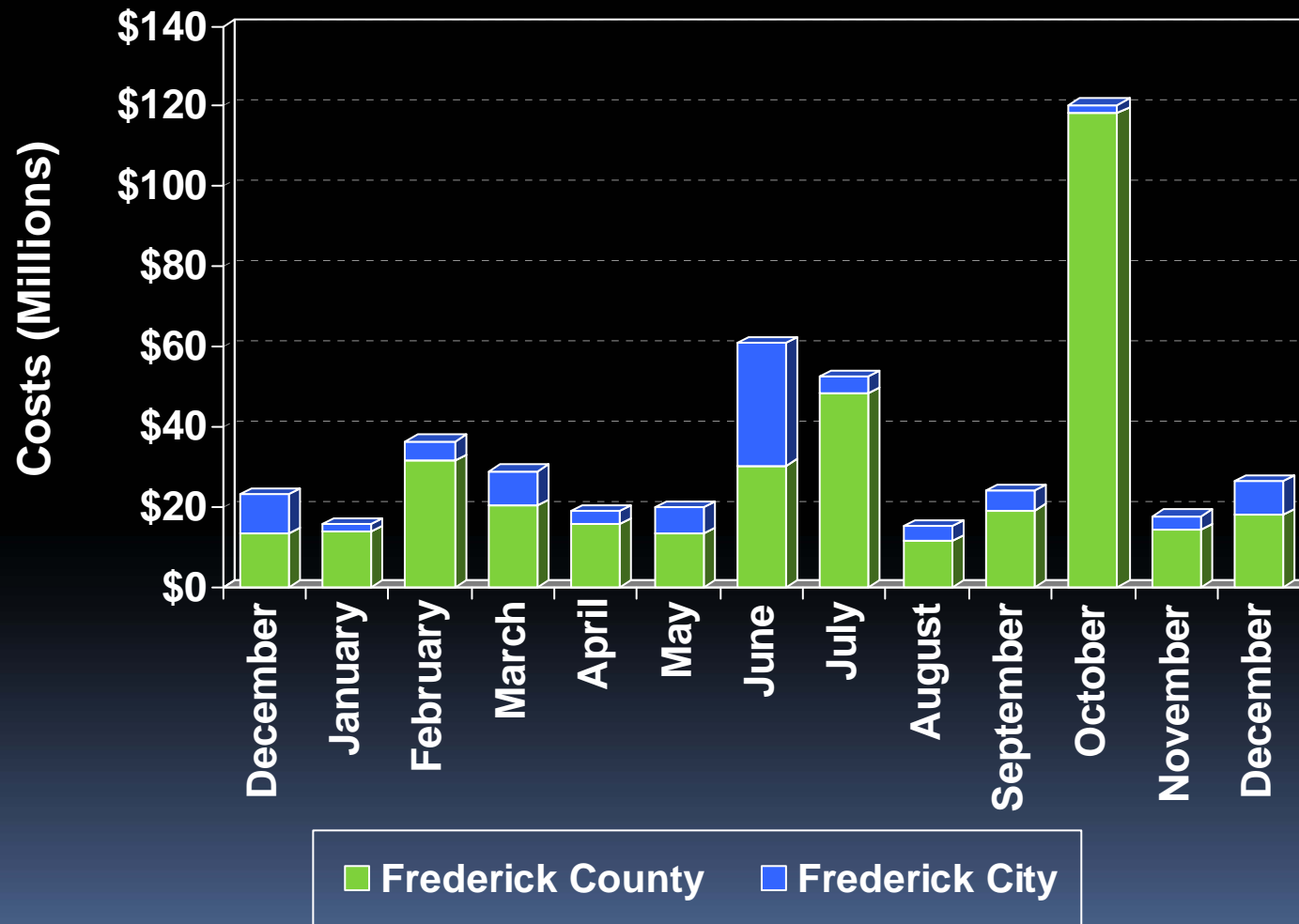
Housing Unit Construction

Comparison of Current Month and YTD Units

Current Month -December			
Year	County	City	Total
2009	45	29	74
2008	26	6	32
2007	28	2	30
2006	28	63	91
2005	59	88	147
5 Year Avg.	37	38	75

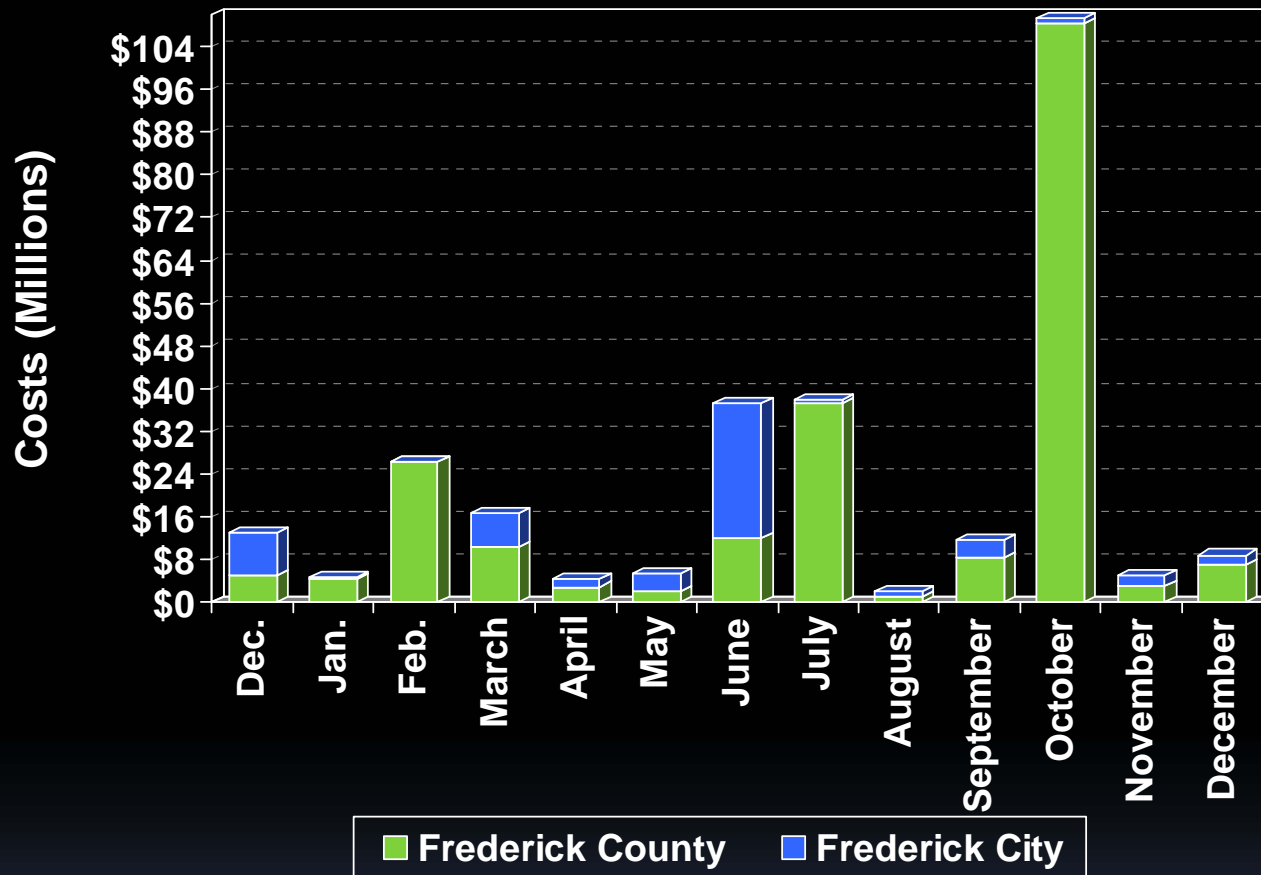
YTD – December			
Year	County	City	Total
2009	533	191	724
2008	431	131	562
2007	789	265	1,054
2006	888	396	1,284
2005	1,480	771	2,251
5 Year Avg.	824	351	1,175

Construction Costs 2008 - 2009



Costs based on issued permits

Commercial Construction Costs 2008 - 2009



Cost per month:

Costs based on issued permits

July 2009 Co. – Walkersville Elementary alteration (\$8.7M), Public Safety Training Facility new construction (\$8.3M), Carroll Manor Elementary School alteration (\$6.4M), Mount St. Mary's University alteration (\$6.1M)

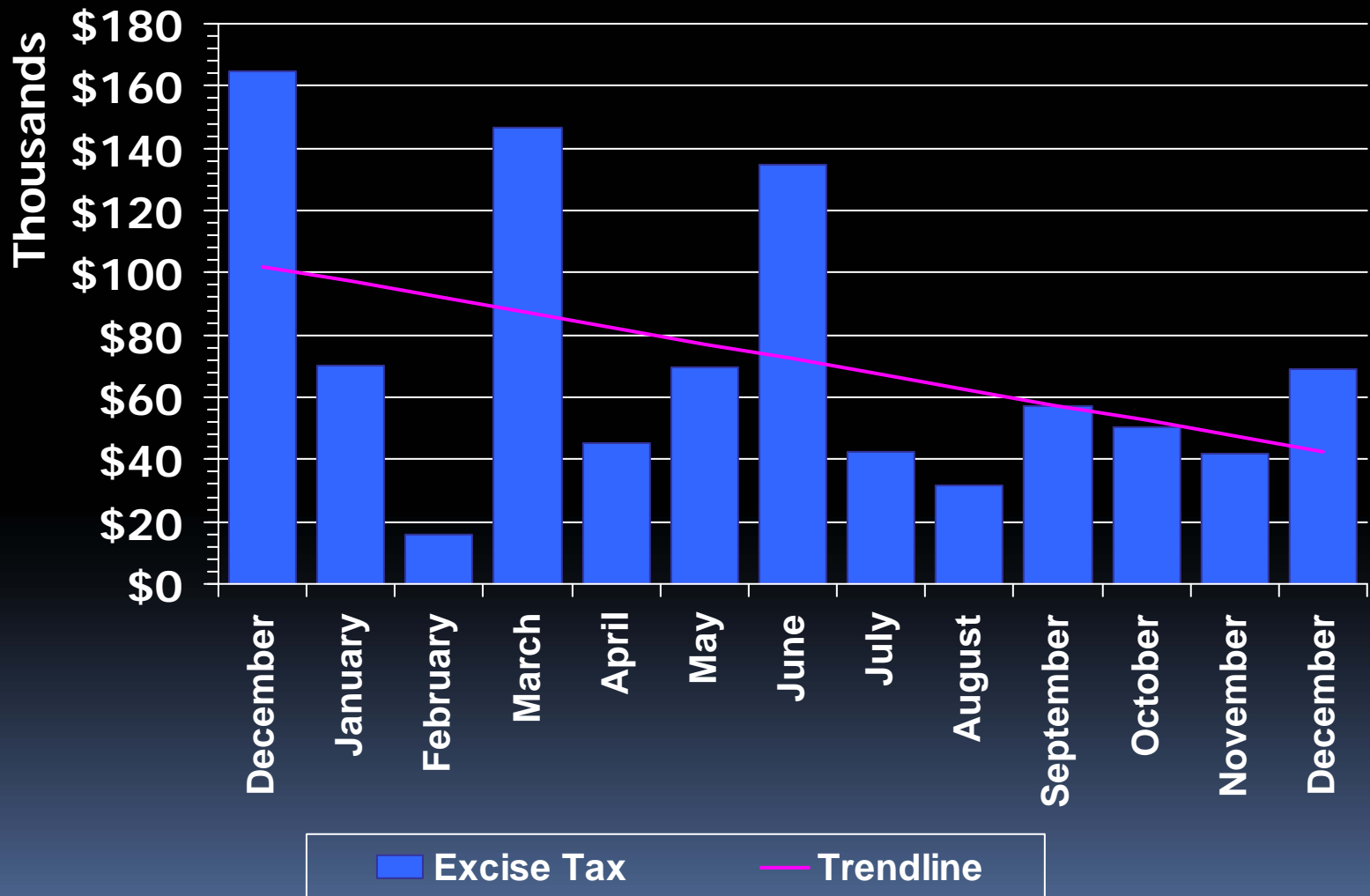
September 2009 Co. – Mountain View Community Church new construction (\$4.6M), Frederick County Div. Of Parks new construction (\$2.6M)

October 2009 Co. – DUSWM new construction , accessory, addition (\$100M), SAIC – Frederick Inc. alteration (\$4.4M), Mt. Carmel U. M. Church addition (\$2.0M)

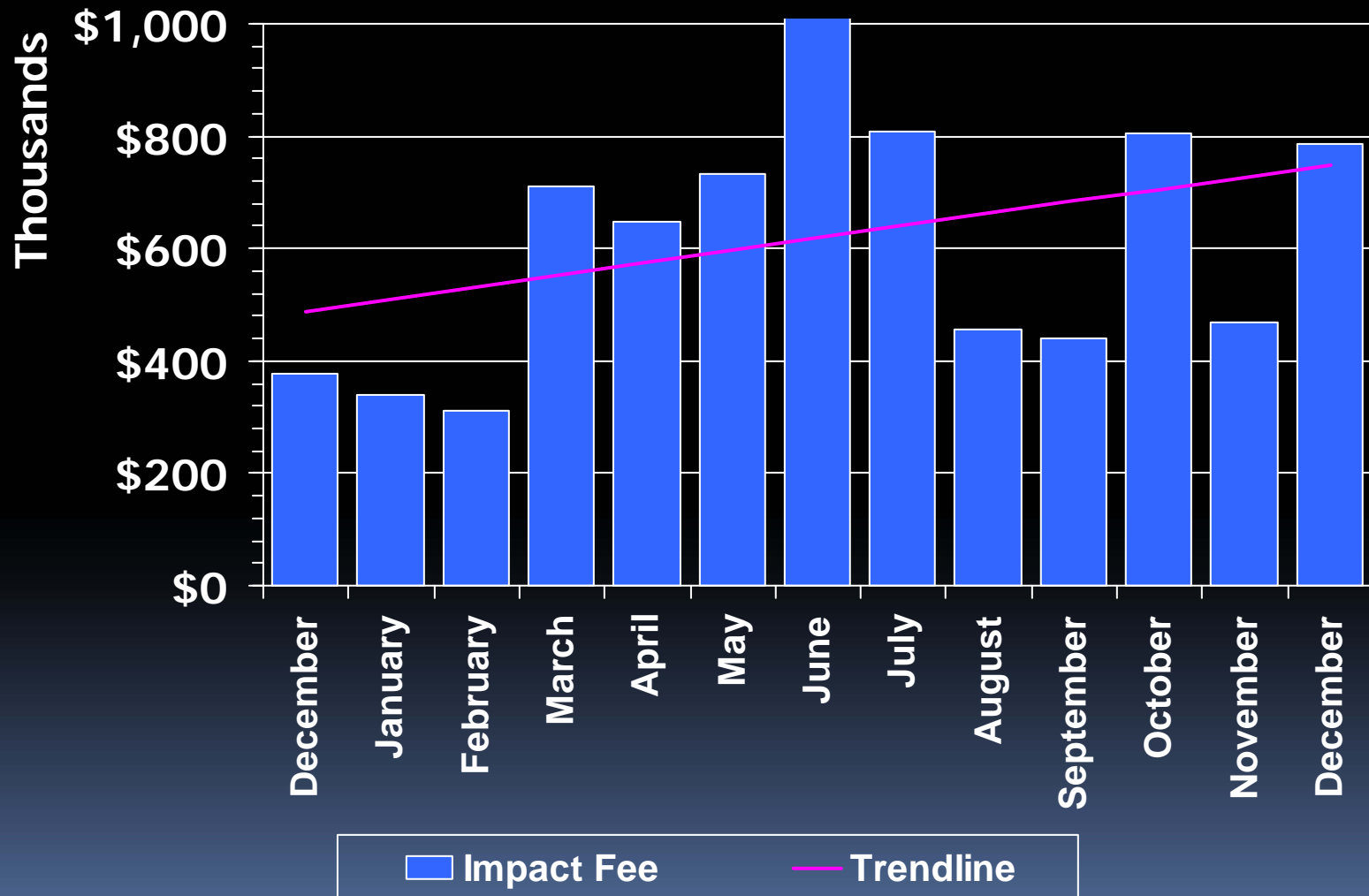
November 2009 Co. – St. Ignatius Catholic Church addition (\$1.8 M)

December 2009 Co. – Brunswick Public Library new (\$4.5M), Frederick Memorial Hospital Imaging Dept. tenant fit out (\$1.6M)

Excise Tax 2008 - 2009



Impact Fee 2008 - 2009

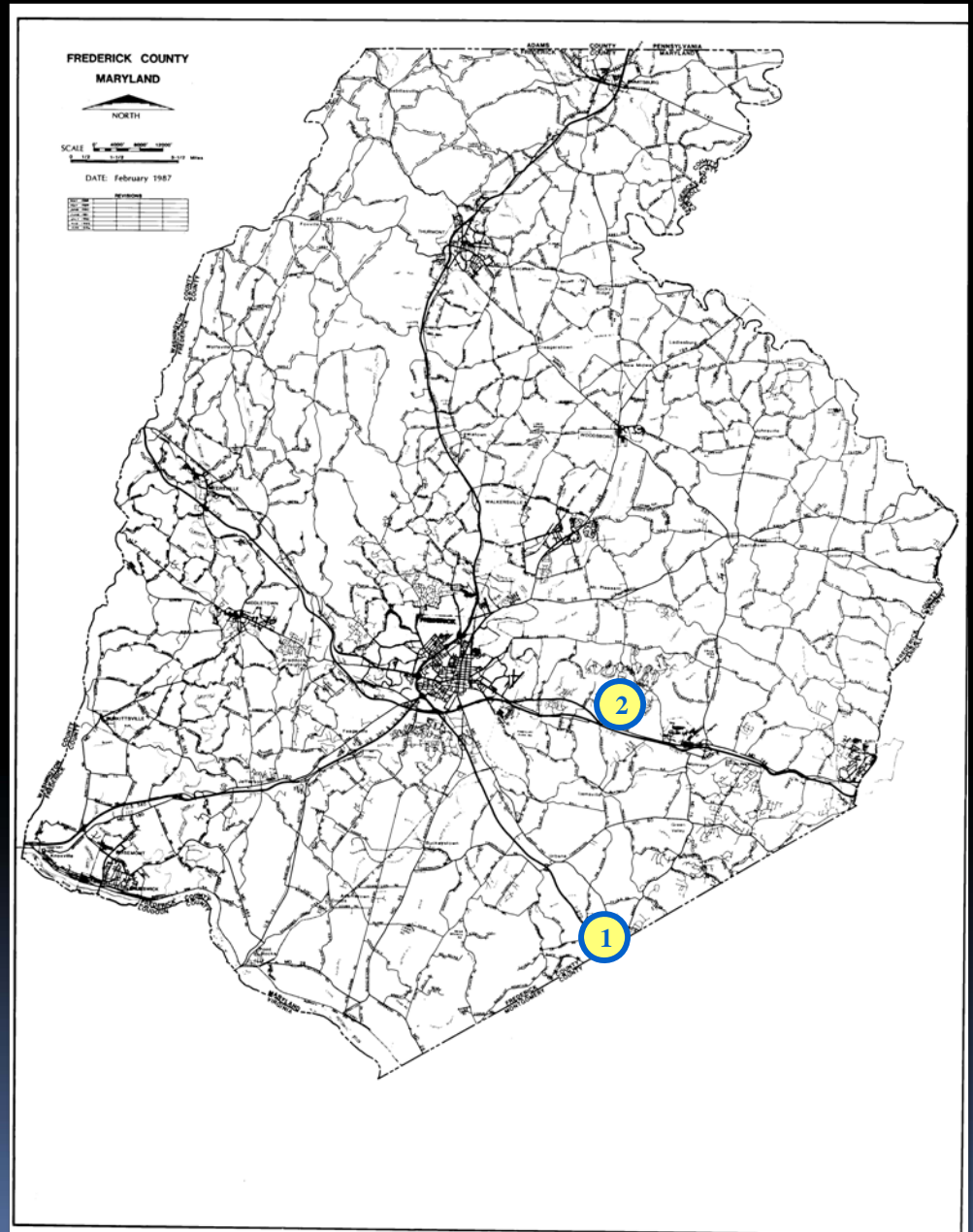


LIST OF PROJECTS

(expected to be presented
at upcoming FcPc meeting)

County Projects

1. Hyattstown Church – Johannes Property
2. Oakdale Elementary School Expansion

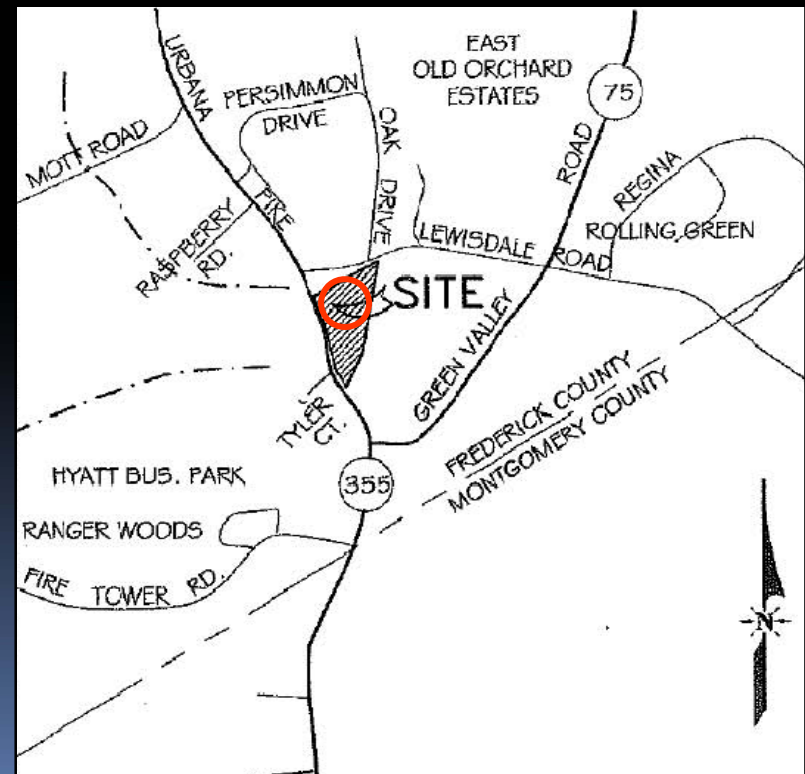




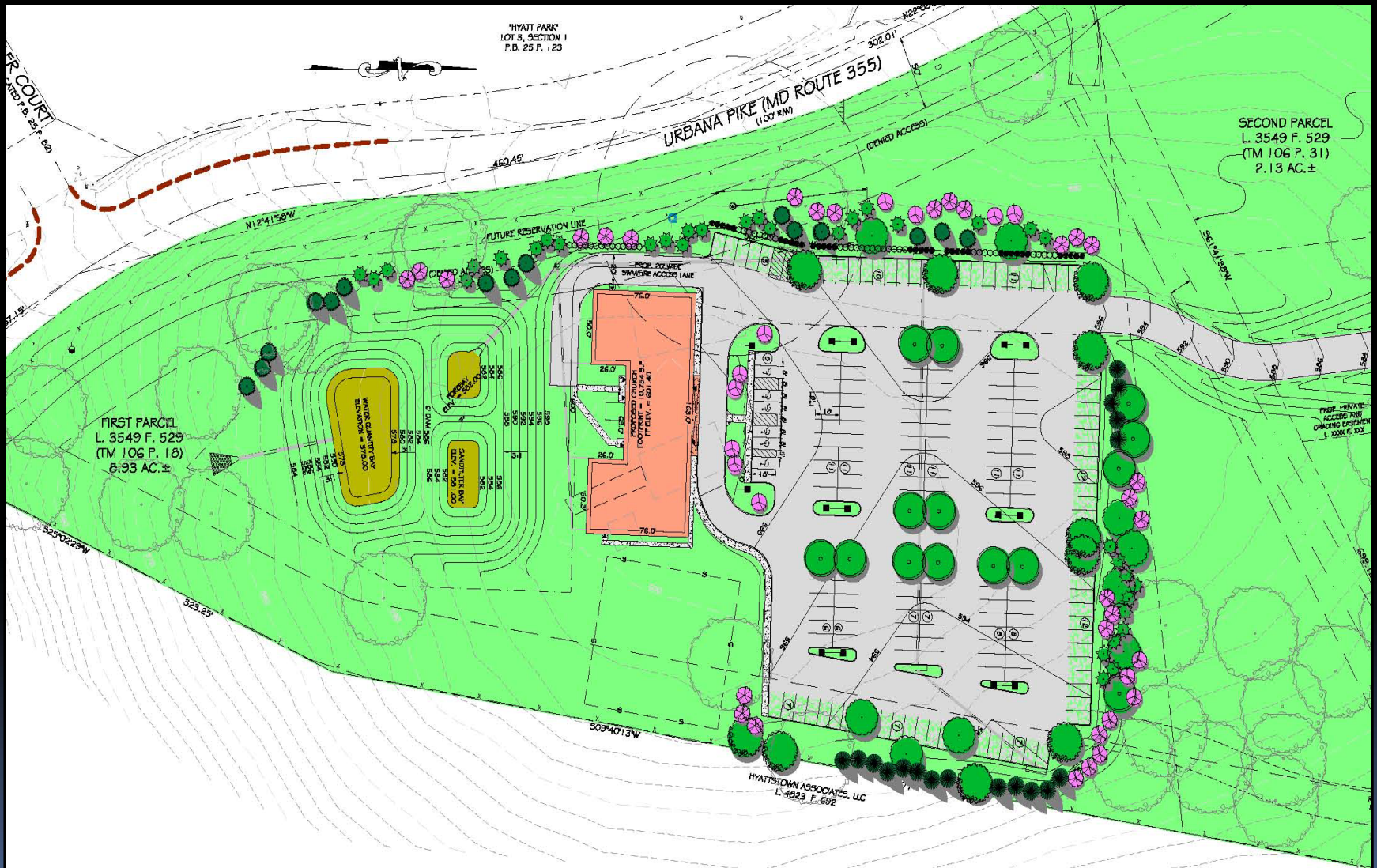
County Projects

Hyattstown Church – Johannes Property

- ❑ Request: Site Plan Approval
- ❑ Location: Corner of MD Route 355 and Lewisdale Road
- ❑ Total Use: 10,754 sq. ft. one-story sanctuary
- ❑ Zoned: Residential (R-1)
- ❑ Applicant: Clarksburg Congregation of Jehovah's Witnesses
- ❑ Engineer: Daft, McCune & Walker, Inc.



Hyattstown Church- Johannes Property



Oakdale Elementary School Expansion

- ❑ Request: Site Plan Approval
- ❑ Location: Old National Pike east of Meadow Road
- ❑ Total Use: 18,867 sq. ft. two-story addition
- ❑ Zoned: Agriculture (AG)
- ❑ Applicant: Frederick County Public Schools
- ❑ Engineer: Harris, Smariga & Associates

