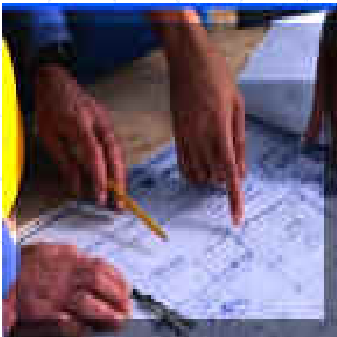


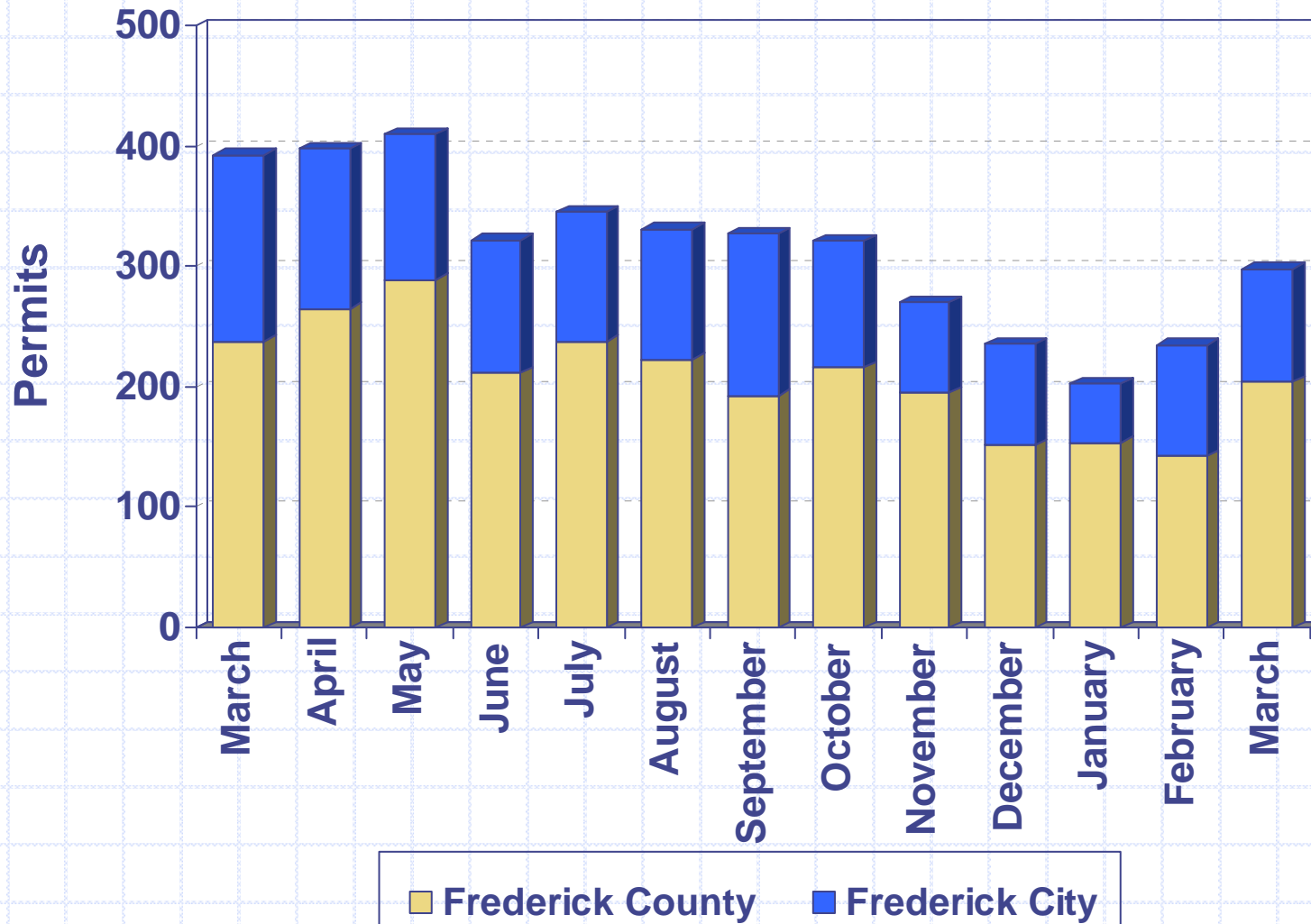


Division of Permitting and Development Review

- May 7, 2009
- Director's Development Data/Project Presentation to the County Commissioners

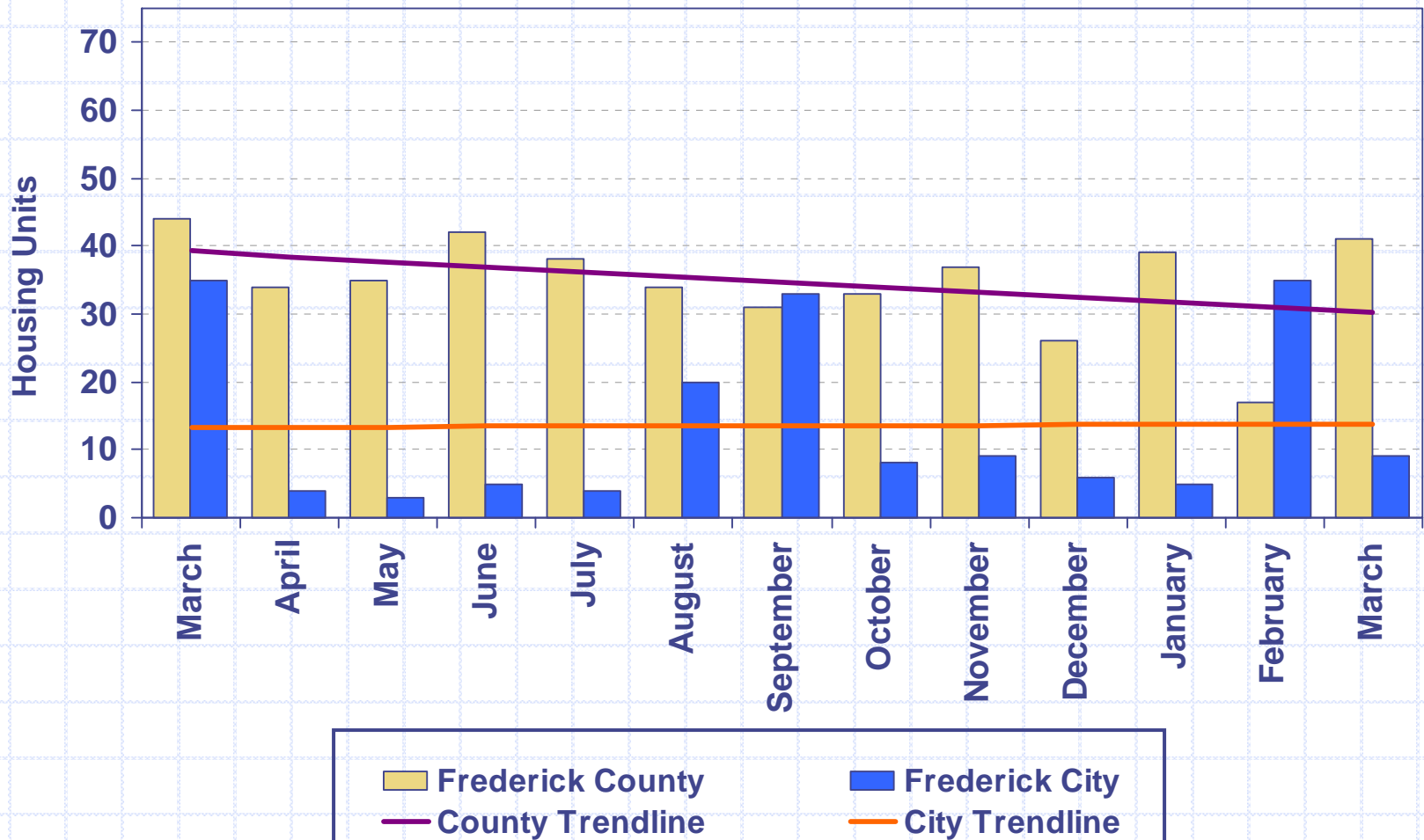


Building Permits Issued 2008 - 2009



Housing Unit Construction 2008 - 2009

Housing units based on issued permits



12 Month Total (April 2008 – March 2009): 548 units

Housing Unit Construction

Comparison of Current Month and YTD Units

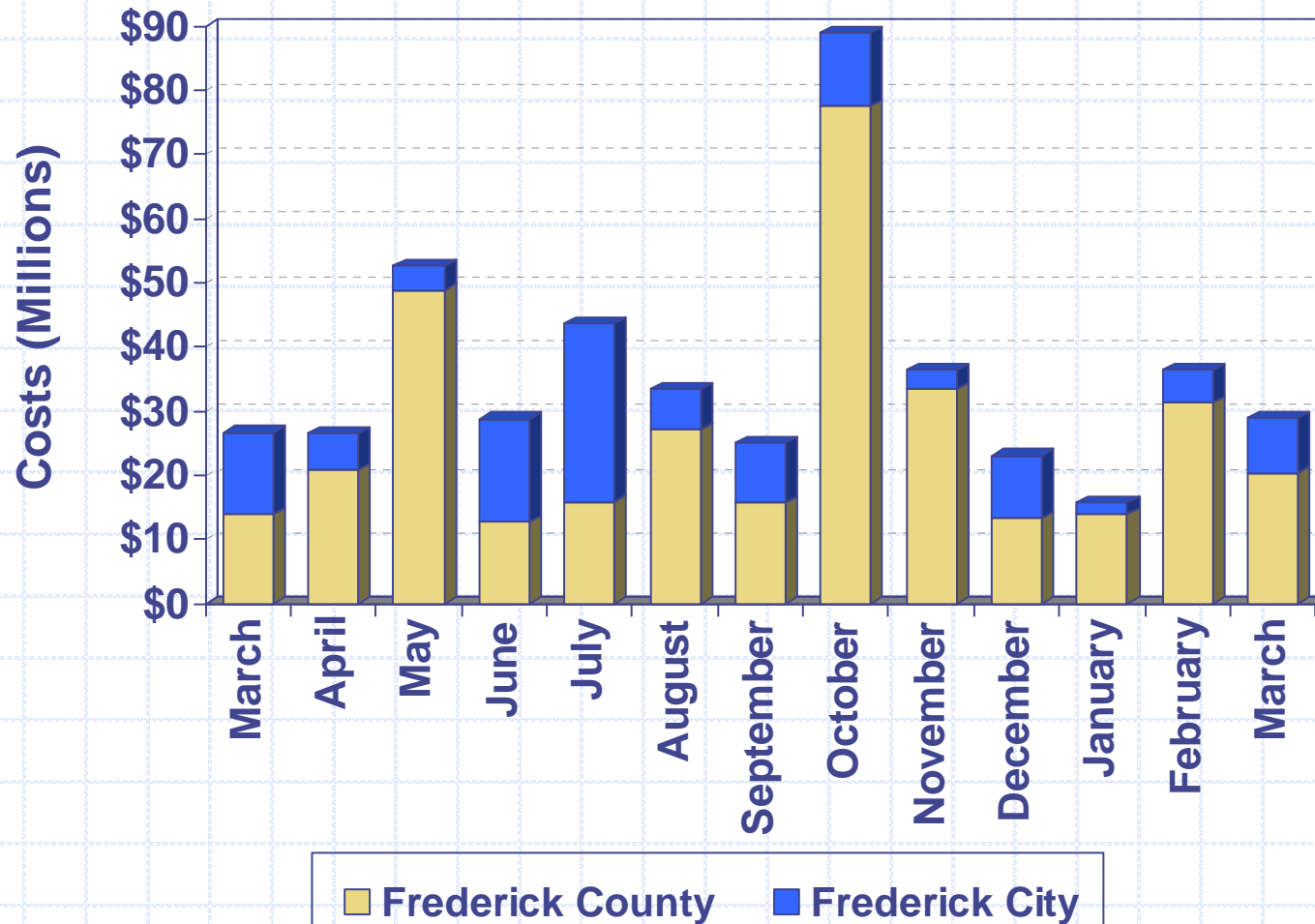
Current Month – March

Year	County	City	Total
2009	41	9	50
2008	44	35	79
2007	67	11	78
2006	110	32	142
2005	171	78	249
5 Year Avg.	87	33	120

YTD – March

Year	County	City	Total
2009	97	49	146
2008	121	39	160
2007	137	81	218
2006	255	136	391
2005	319	145	464
5 Year Avg.	186	90	276

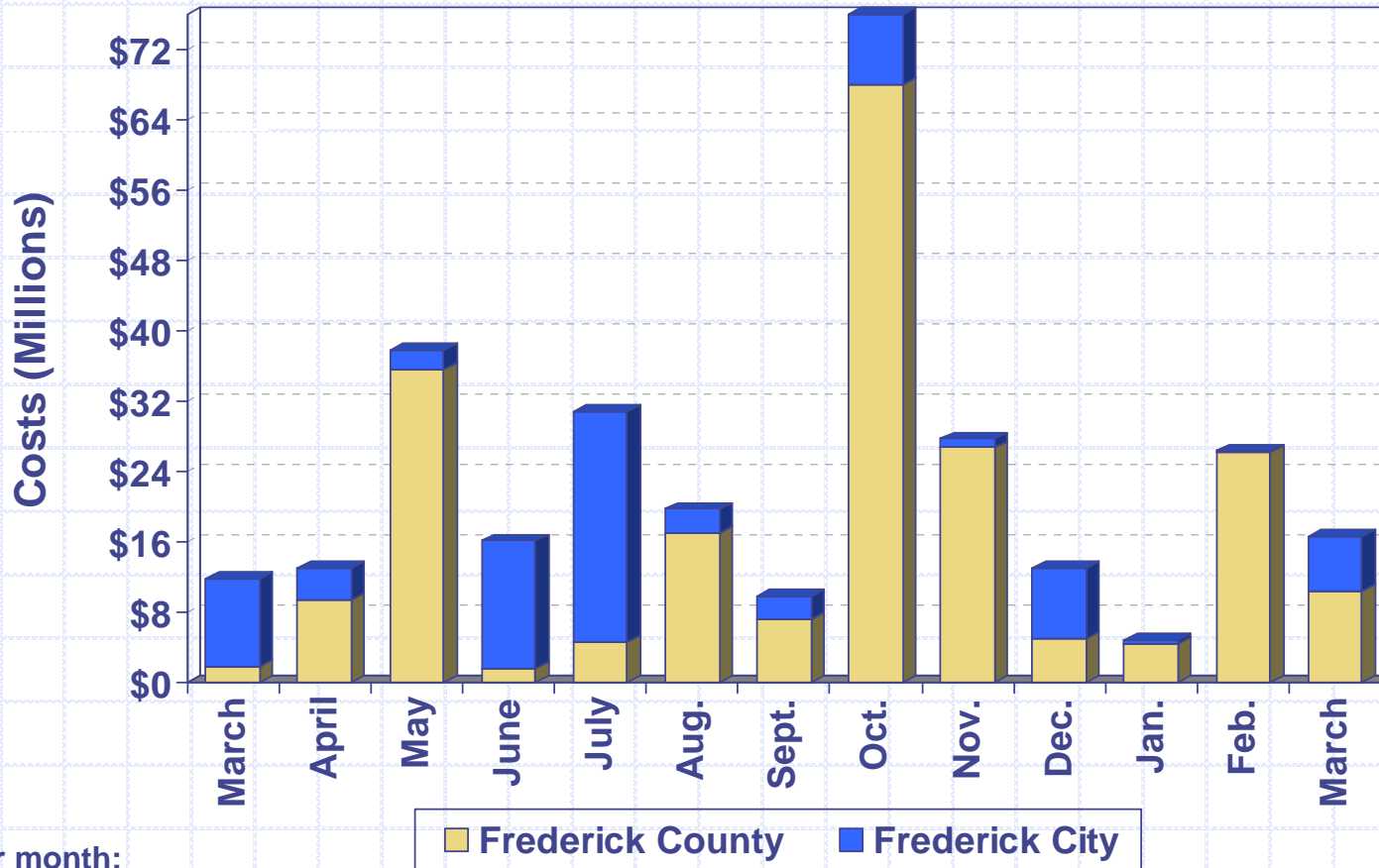
Construction Costs 2008 - 2009



Costs based on issued permits

Commercial Construction Costs

2008 - 2009



Cost per month:

March 2008 City – Riverside Corporation (\$6M)

May 2008 Co. – Mount Saint Mary's University building alterations (\$24M)

June 2008 City – West Frederick Middle School new construction (\$13.9M)

July 2008 City – Frederick Community College classrooms/student center (\$18M)

Aug. 2008 Co. – Ben's Branch Pumping Station (\$4.4M) & Shockley Honda addition (\$4M)

Oct. 2008 Co. – Linganore High School new construction (\$59.2M)

Nov. 2008 Co. – Lonza Walkersville, Inc. new construction (\$20M)

Feb. 2009 Co. – Costco new construction (\$19M)

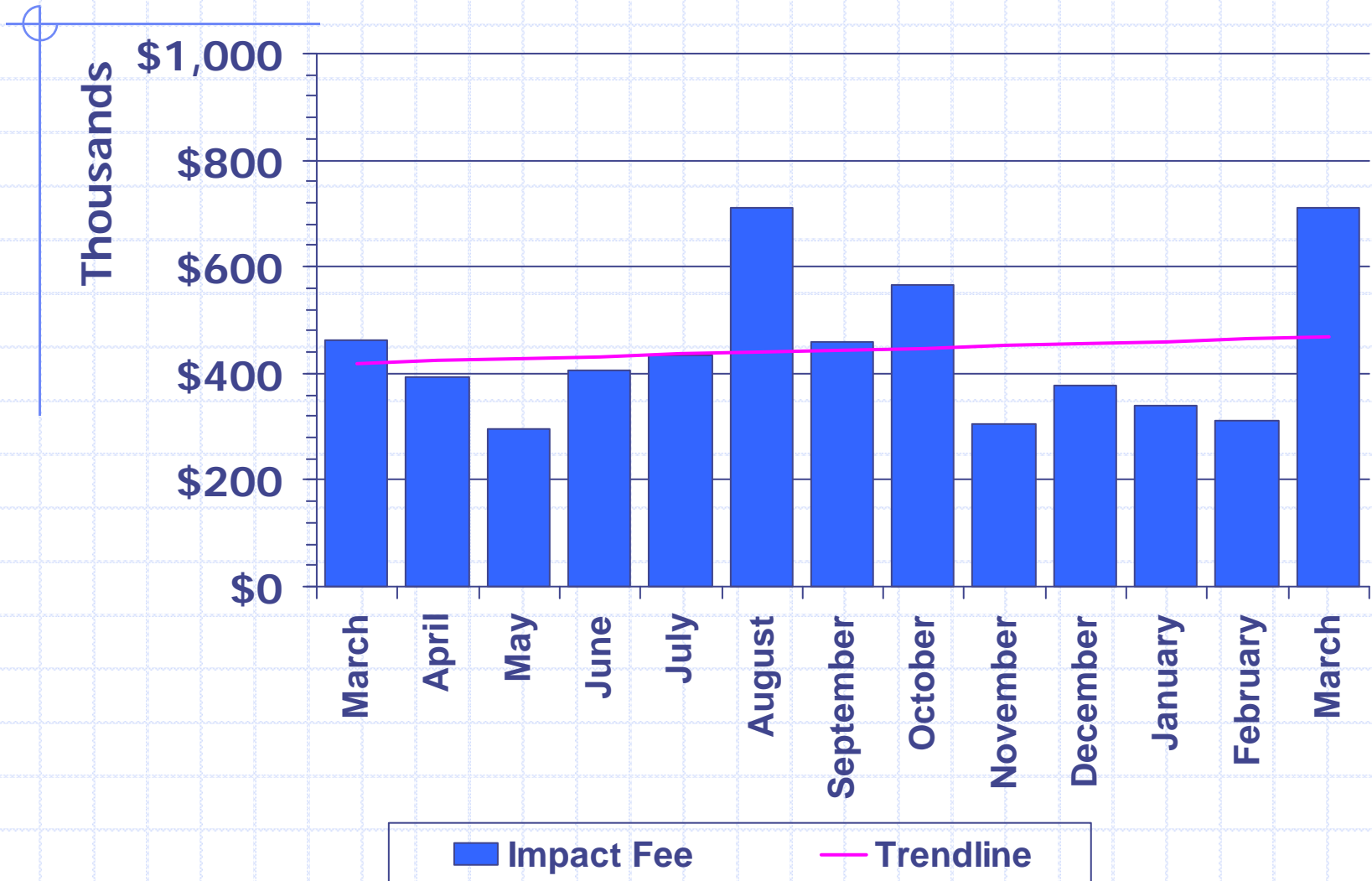
March 2009 Co. – Lonza Walkersville, Inc. alteration (\$5M)

Costs based on issued permits

Excise Tax 2008 - 2009



Impact Fee 2008 - 2009

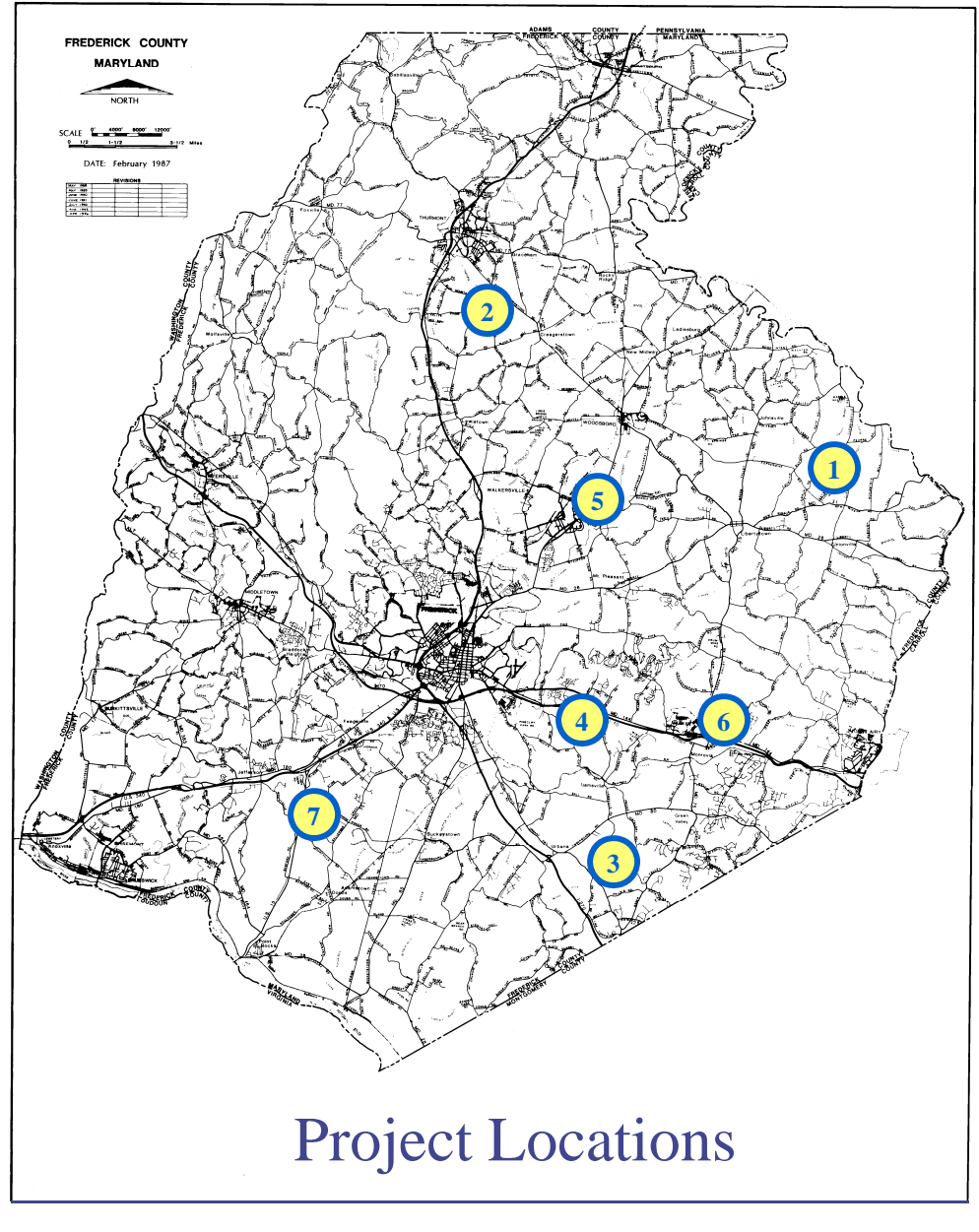


LIST OF PROJECTS

(expected to be presented
at upcoming FcPc meeting)

County Projects

1. DPW Road Satellite Facility-
Johnsville
2. DPW Road Satellite Facility-
Thurmont
3. DPW Road Satellite Facility-
Urbana
4. Mount Carmel Methodist
Church
5. Bethel Worship Center
6. CVS – New Market
7. Stanford Industrial Park,
Lot 28

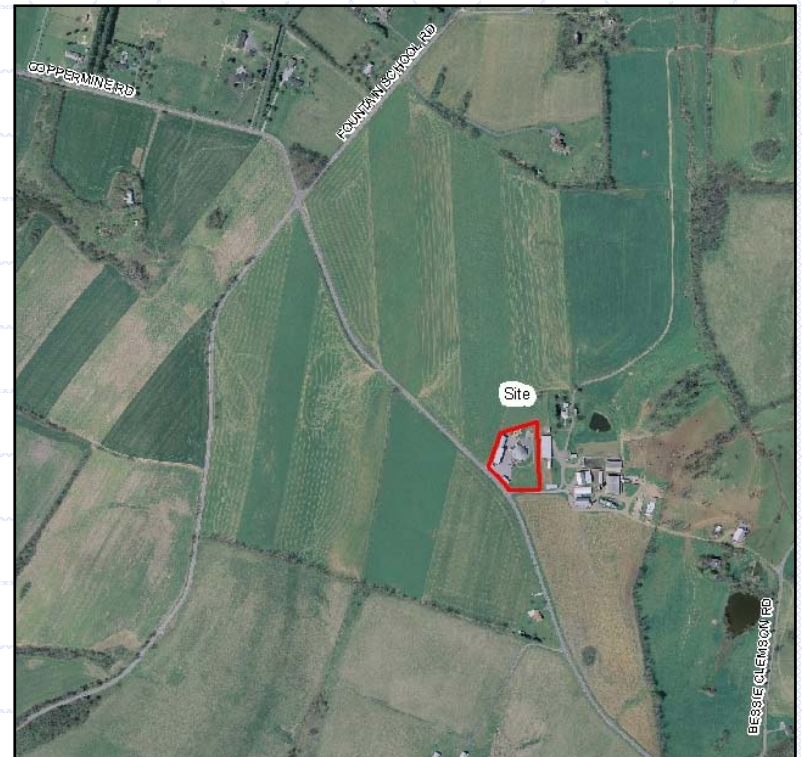




County Projects

DPW Road Satellite Facility - Johnsville

- ❑ Request: Site Plan Approval
- ❑ Location: Coppermine Road, east of Fountain School Road
- ❑ Total Use: 1,320 sq. ft. office building
- ❑ Zoned: AG
- ❑ Applicant: Frederick County Division of Public Works
- ❑ Engineer: Wilson T. Ballard Company



DPW Road Satellite Facility - Johnsville



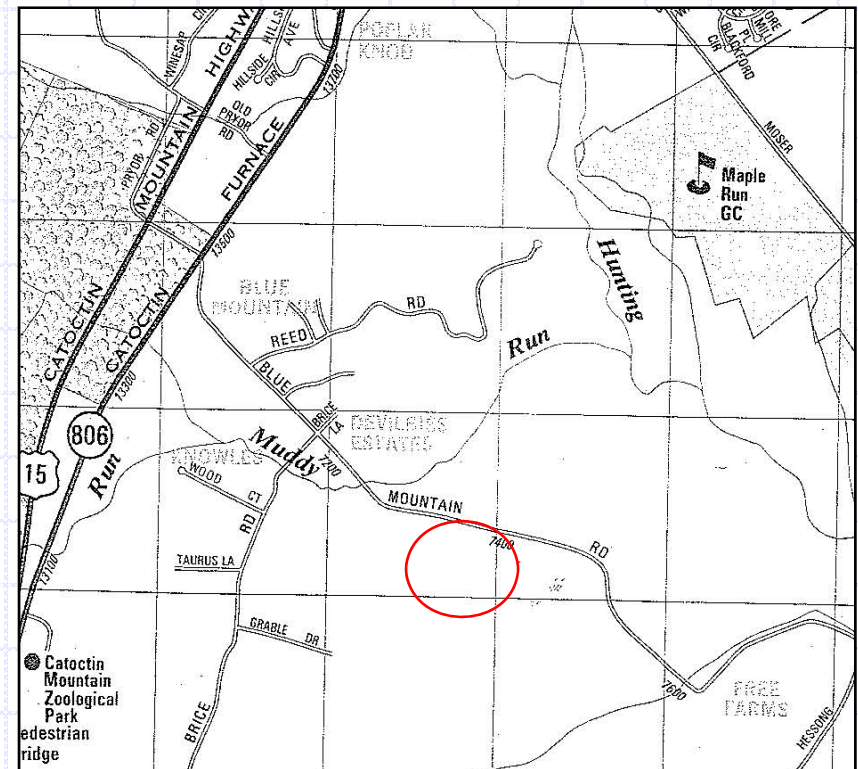
2	OR	Quercus rubra / Northern Red Oak	3' Cal.	88B	Straight Central Leader, Full Canopy
EVERGREEN TREES					
12	IOa	Ilex opaca 'Angelica' / Female American Holly	7' Ht.	88B	Straight Central Leader, Full to Base
9	IOb	Ilex opaca 'Jersey Princess' / Female American Holly	7' Ht.	88B	Straight Central Leader, Full to Base
3	IOc	Ilex opaca 'Jersey Knight' / Male American Holly	7' Ht.	88B	Straight Central Leader, Full to Base
14	JV	Juniperus virginiana / Eastern Redcedar	8' Ht.	88B	Straight Central Leader, Full to Base
9	MG	Magnolia grandiflora 'Edith Bogue' / Southern Magnolia	8' Ht.	88B	Straight Central Leader, Full to Base
SHRUBS					
38	MP	Myrica pensylvanica / Northern Bayberry	#7	36" Ht.	Full, 42" O.C.
51	RA	Rhus aromatica / Fragrant Sumac	#5	36" Ht.	Full, 36" O.C.
53	VO	Viburnum dentatum / Arrowwood Viburnum	#5	36" Ht.	Full, 42" O.C.
GRASSES / SEDGES / EMERGENTS SHM AREA					
220	PA	Panicum virgatum 'Cloud Nine' / Switchgrass	#SP4		30" O.C.

NOTES:
1. ALL DISTURBED AREAS NOT RECEIVING PLANTINGS SHALL BE SEEDED WITH TURFGRASS SEED MIX.



DPW Road Satellite Facility - Thurmont

- ❑ Request: Site Plan Approval
- ❑ Location: Blue Mountain Road, north of Hessong Bridge Road
- ❑ Total Use: 1,320 sq. ft. office
- ❑ Zoned: AG
- ❑ Applicant: Frederick County Division of Public Works
- ❑ Engineer: Wilson T. Ballard Company



DPW Road Satellite Facility - Thurmont

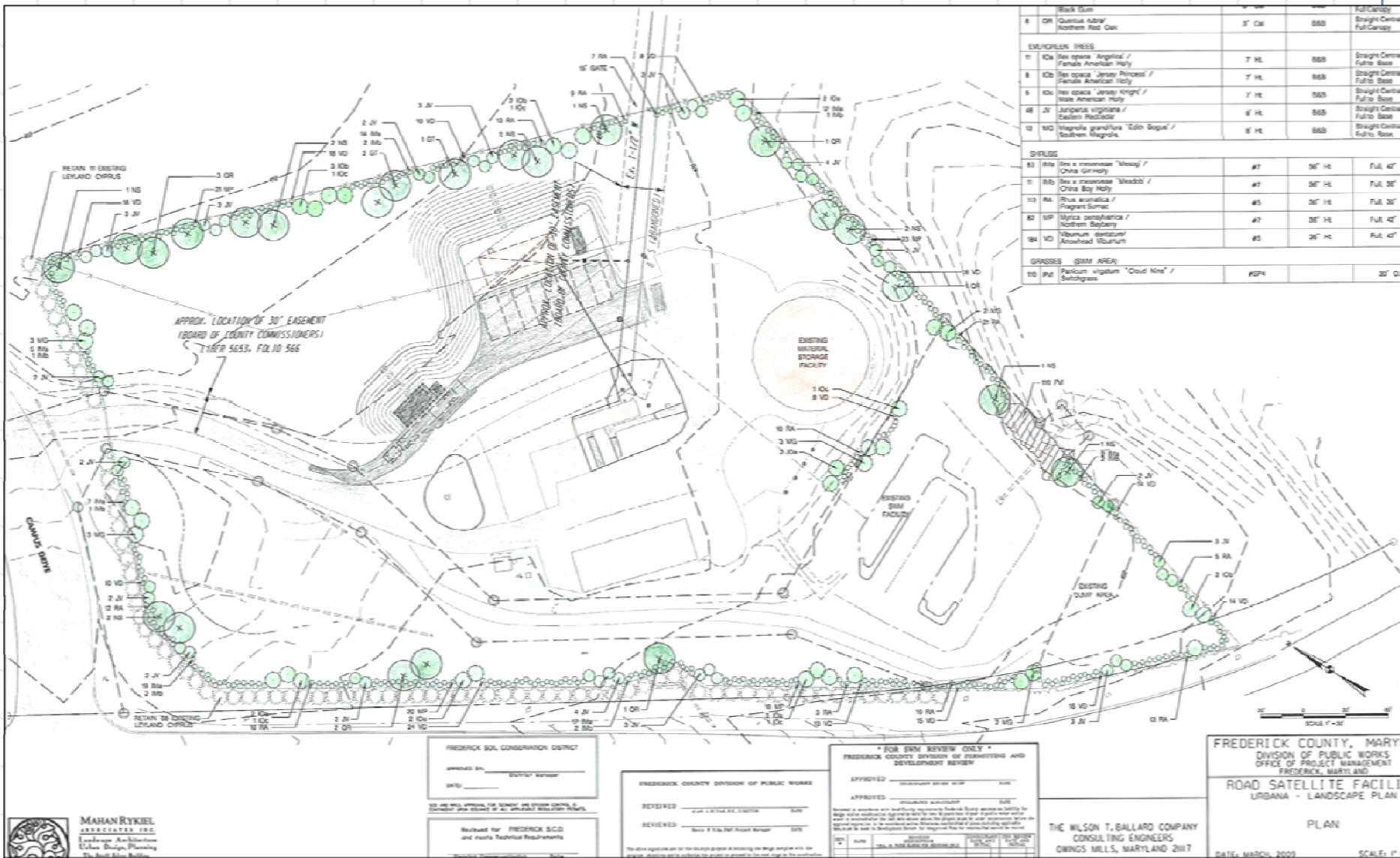


DPW Road Satellite Facility - Urbana

- ❑ Request: Site Plan Approval
- ❑ Location: Route 355 and Campus Drive intersection
- ❑ Total Use: 1,320 sq. ft. office
- ❑ Zoned: AG
- ❑ Applicant: Frederick County Division of Public Works
- ❑ Engineer: Wilson T. Ballard Company



DPW Road Satellite Facility - Urbana



Mount Carmel Methodist Church

- ❑ Request: Site Plan Approval
- ❑ Location: Baltimore Road, east of Bells Lane and west of Winding Ridge Way
- ❑ Total Use: 3,637 sq. ft. addition to existing 3,092 sq. ft. church (6,729 total sq. ft.)
- ❑ Zoned: R-3
- ❑ Applicant: Mount Carmel M.P. Church
- ❑ Engineer: Daft McCune Walker Inc.



Mount Carmel Methodist Church



Bethel Worship Center

- ❑ Request: Site Plan Approval
- ❑ Location: Daysville Road and Woodsboro Pike intersection
- ❑ Total Use: 33,611 sq. ft. church
- ❑ Zoned: AG
- ❑ Applicant: Bethel Worship Center
- ❑ Engineer: Harris, Smariga & Associates, Inc.



Bethel Worship Center

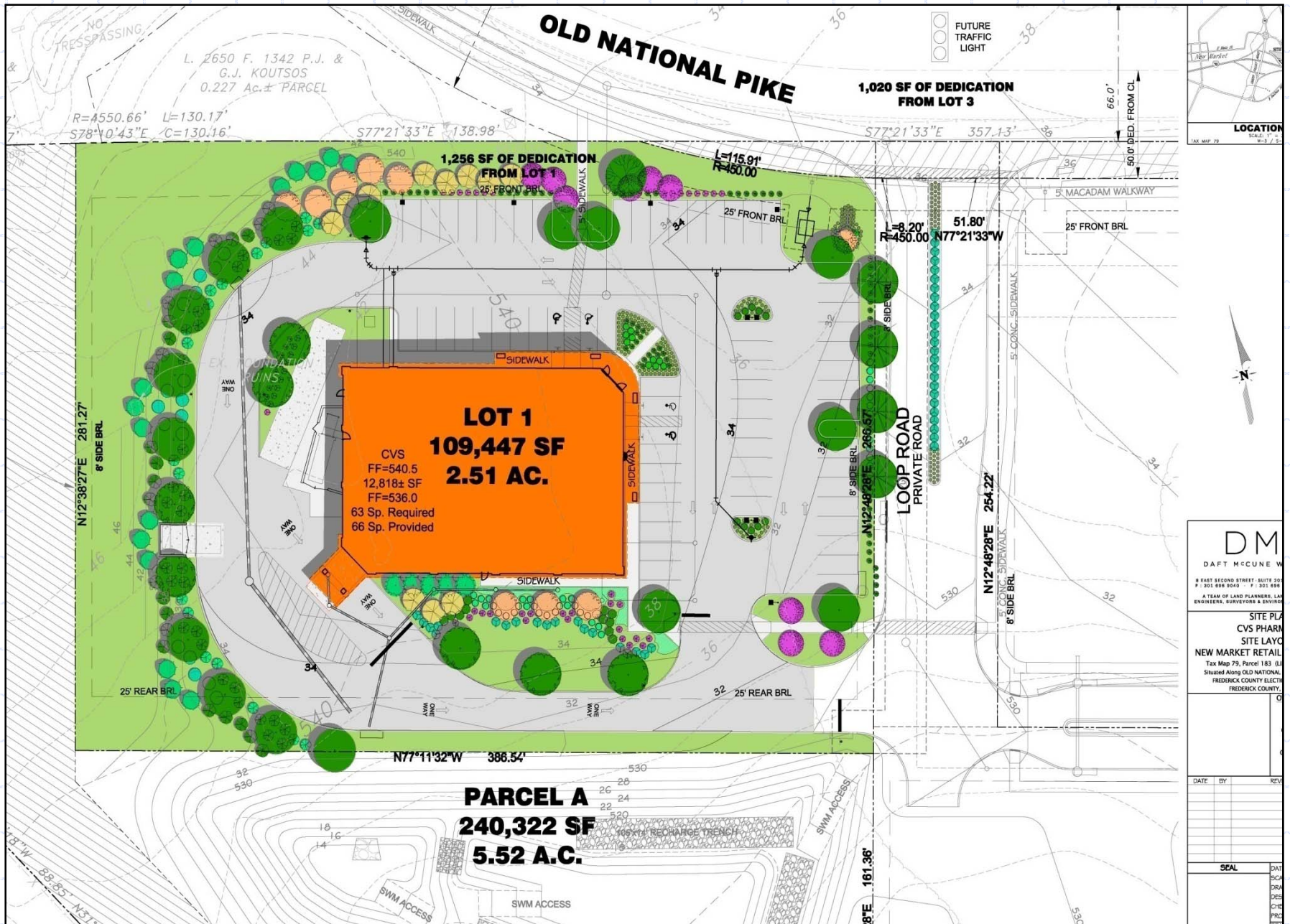


CVS – New Market

- ❑ Request: Site Plan Approval
- ❑ Location: South side of Old National Pike, east of Morning Gate Lane
- ❑ Total Use: 12,818 sq. ft. retail building
- ❑ Zoned: GC
- ❑ Applicant: JEM X, LLC
- ❑ Engineer: Daft McCune Walker Inc.

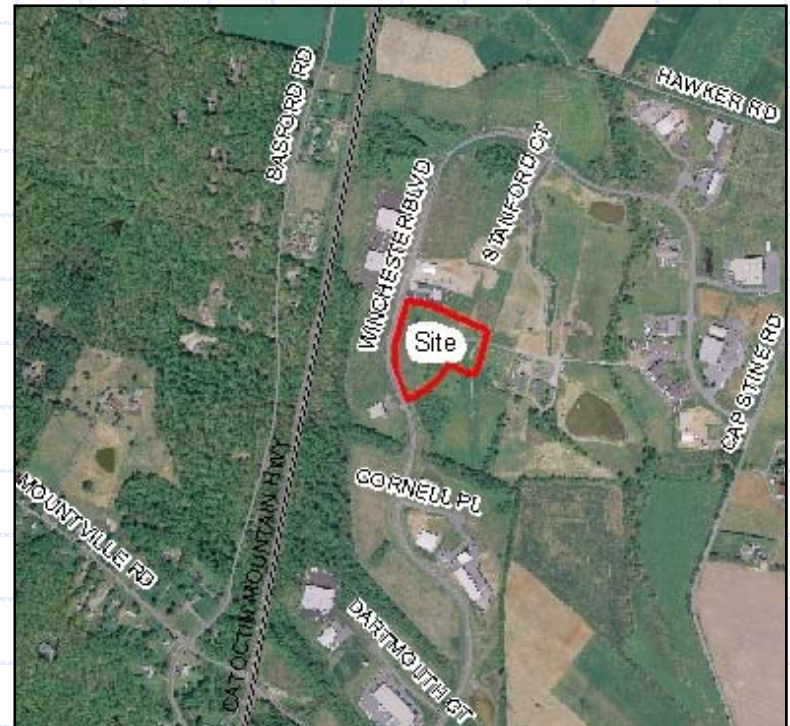


CVS – New Market



Stanford Industrial Park, Lot 28

- ❑ Request: Site Plan Approval
- ❑ Location: Winchester Blvd., north of Cornell Street
- ❑ Total Use: Conversion of 20,800 sq. ft. existing office space to a 20,000 sq. ft. sports training facility with 800 sq. foot mezzanine
- ❑ Zoned: LI
- ❑ Applicant: John Delaplaine, New Stanford LLC
- ❑ Engineer: Harris, Smariga & Associates, Inc.



Stanford Industrial Park, Lot 28

