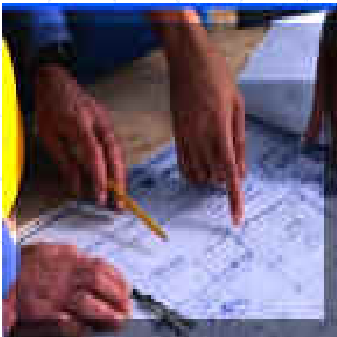


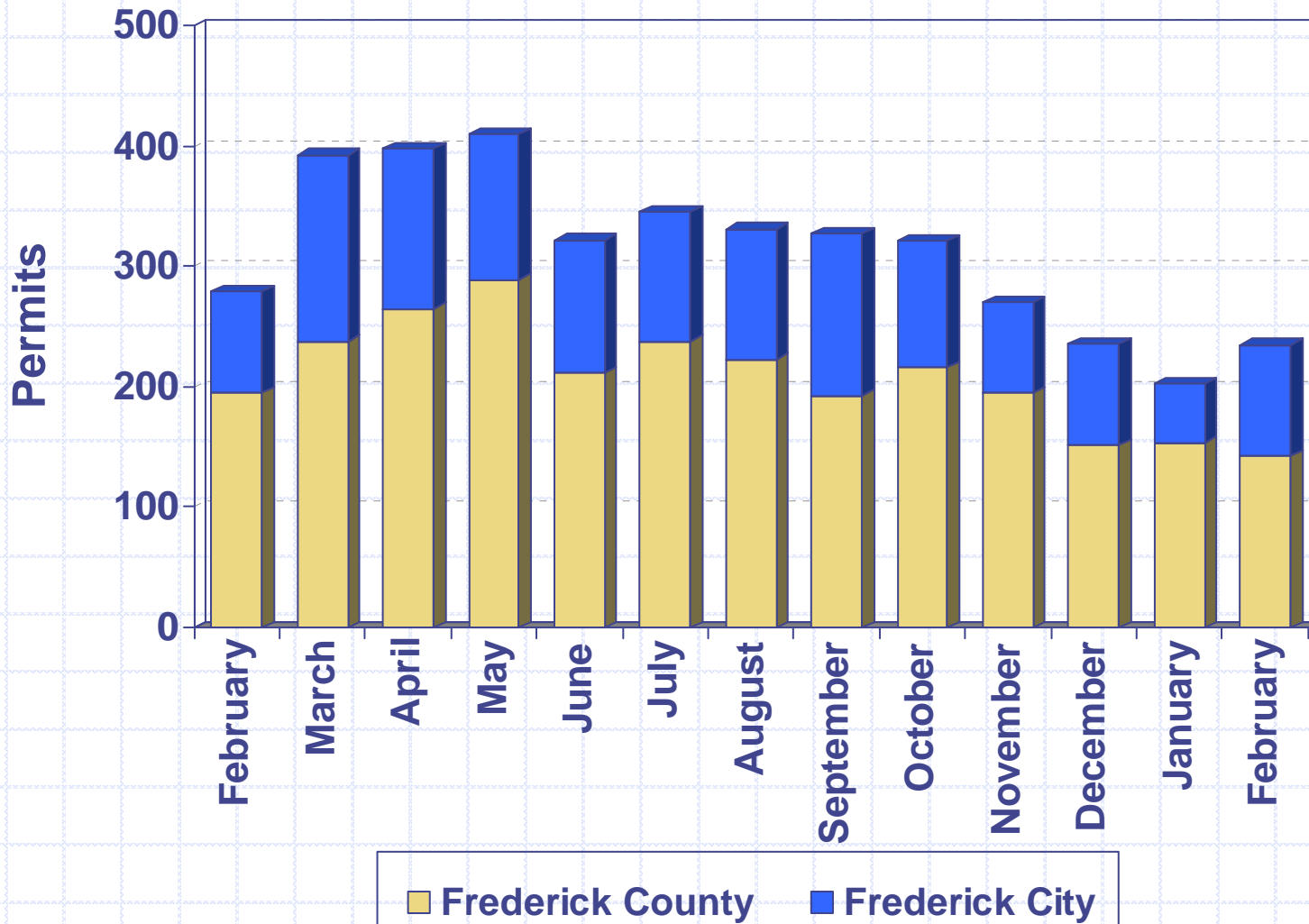


# Division of Permitting and Development Review

- April 2, 2009
- Director's Development Data/Project Presentation to the County Commissioners

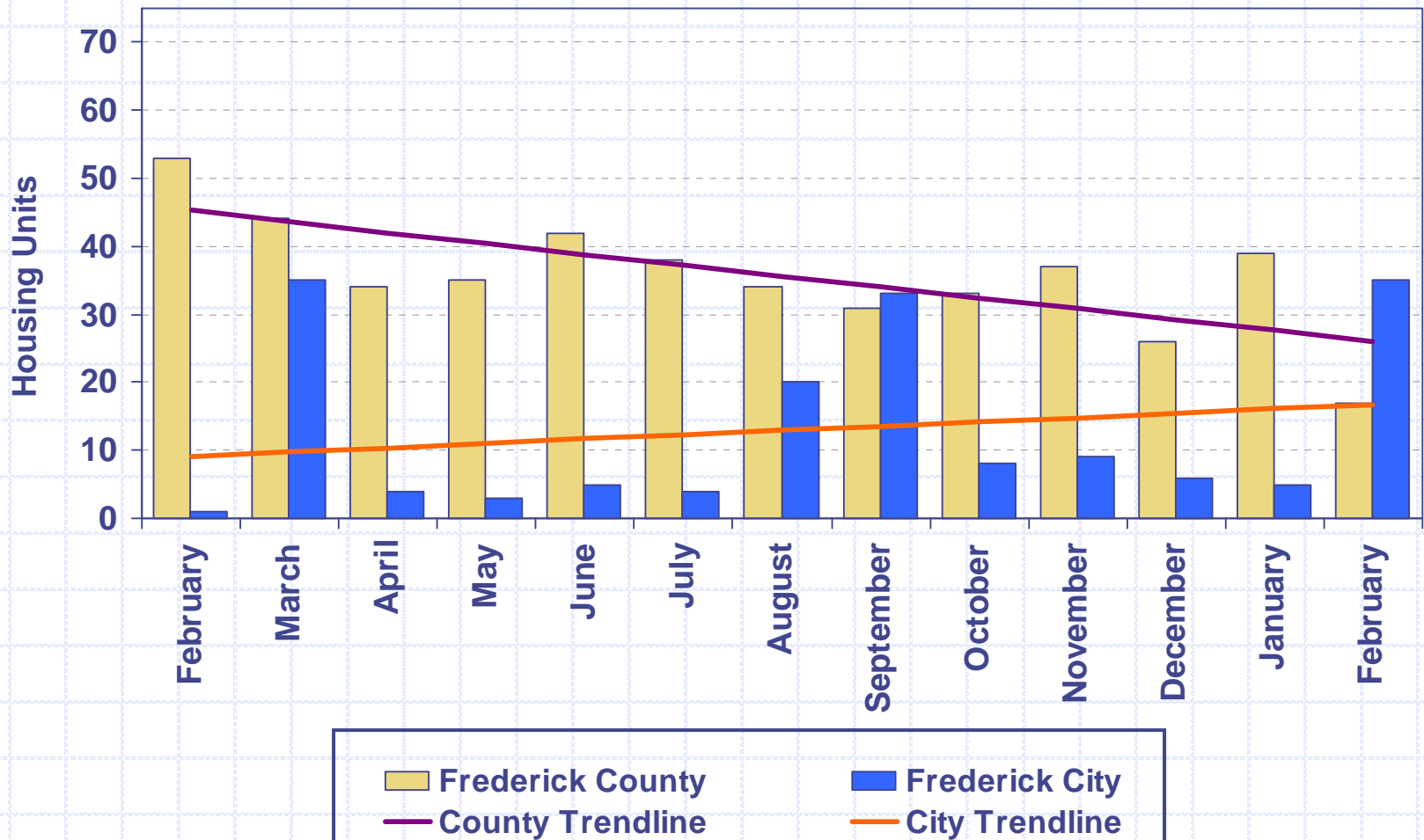


# Building Permits Issued 2008 - 2009



# Housing Unit Construction 2008 - 2009

Housing units based on issued permits



12 Month Total (March 2008 – February 2009): 577 units

# Housing Unit Construction

## Comparison of Current Month and YTD Units

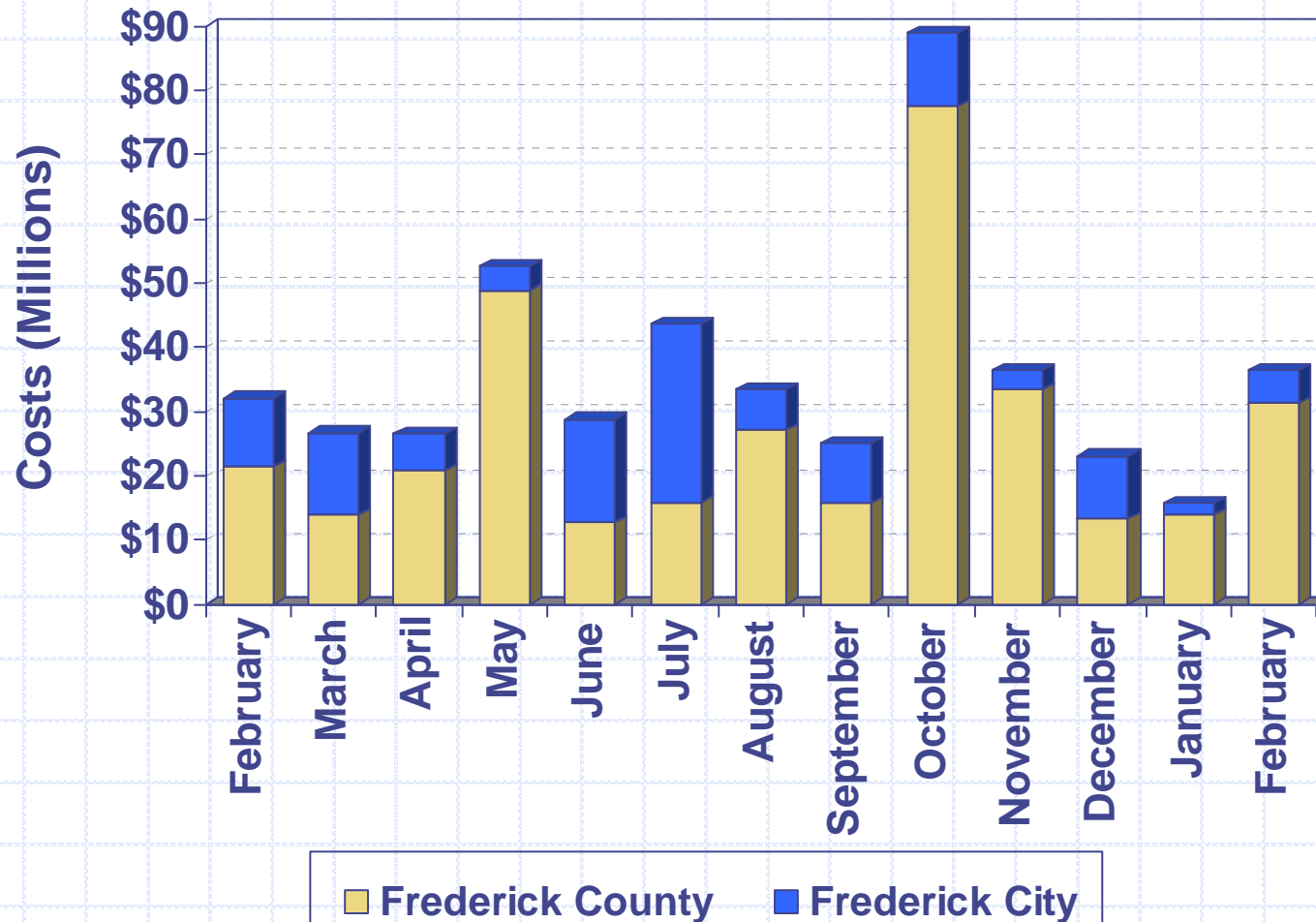
### Current Month – February

Year	County	City	Total
2009	17	35	52
2008	53	1	54
2007	31	62	93
2006	54	33	87
2005	92	39	131
5 Year Avg.	49	34	83

### YTD – February

Year	County	City	Total
2009	56	40	96
2008	77	4	81
2007	70	70	140
2006	145	104	249
2005	148	67	215
5 Year Avg.	99	57	156

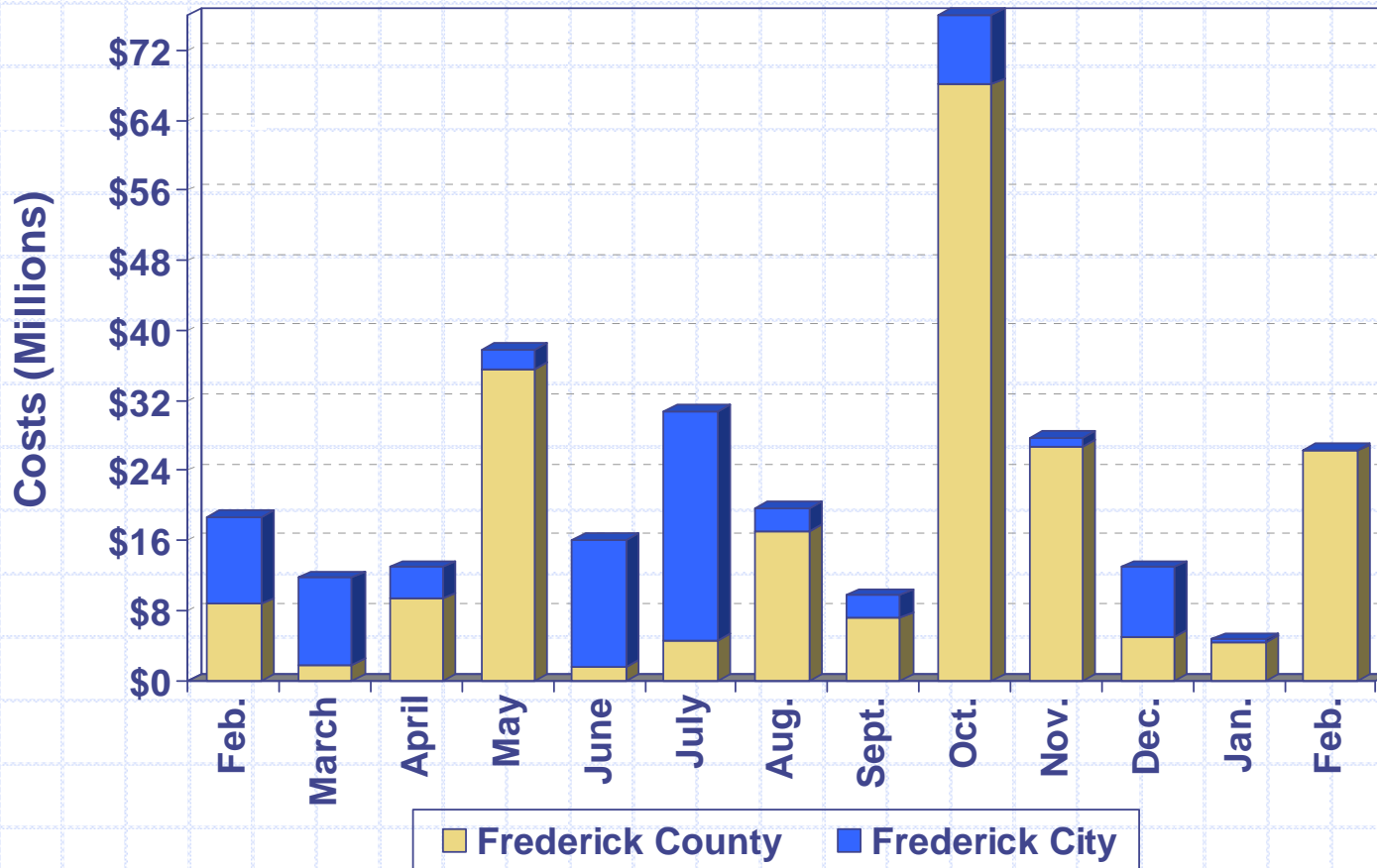
# Construction Costs 2008 - 2009



Costs based on issued permits

# Commercial Construction Costs

## 2008 - 2009



### Cost per month:

Costs based on issued permits

March 2008 City – Riverside Corporation (\$6M)

May 2008 Co. – Mount Saint Mary's University building alterations (\$24M)

June 2008 City – West Frederick Middle School new construction (\$13.9M)

July 2008 City – Frederick Community College classrooms/student center (\$18M)

Aug. 2008 Co. – Ben's Branch Pumping Station (\$4.4M) & Shockley Honda addition (\$4M)

Oct. 2008 Co. – Linganore High School new construction (\$59.2M)

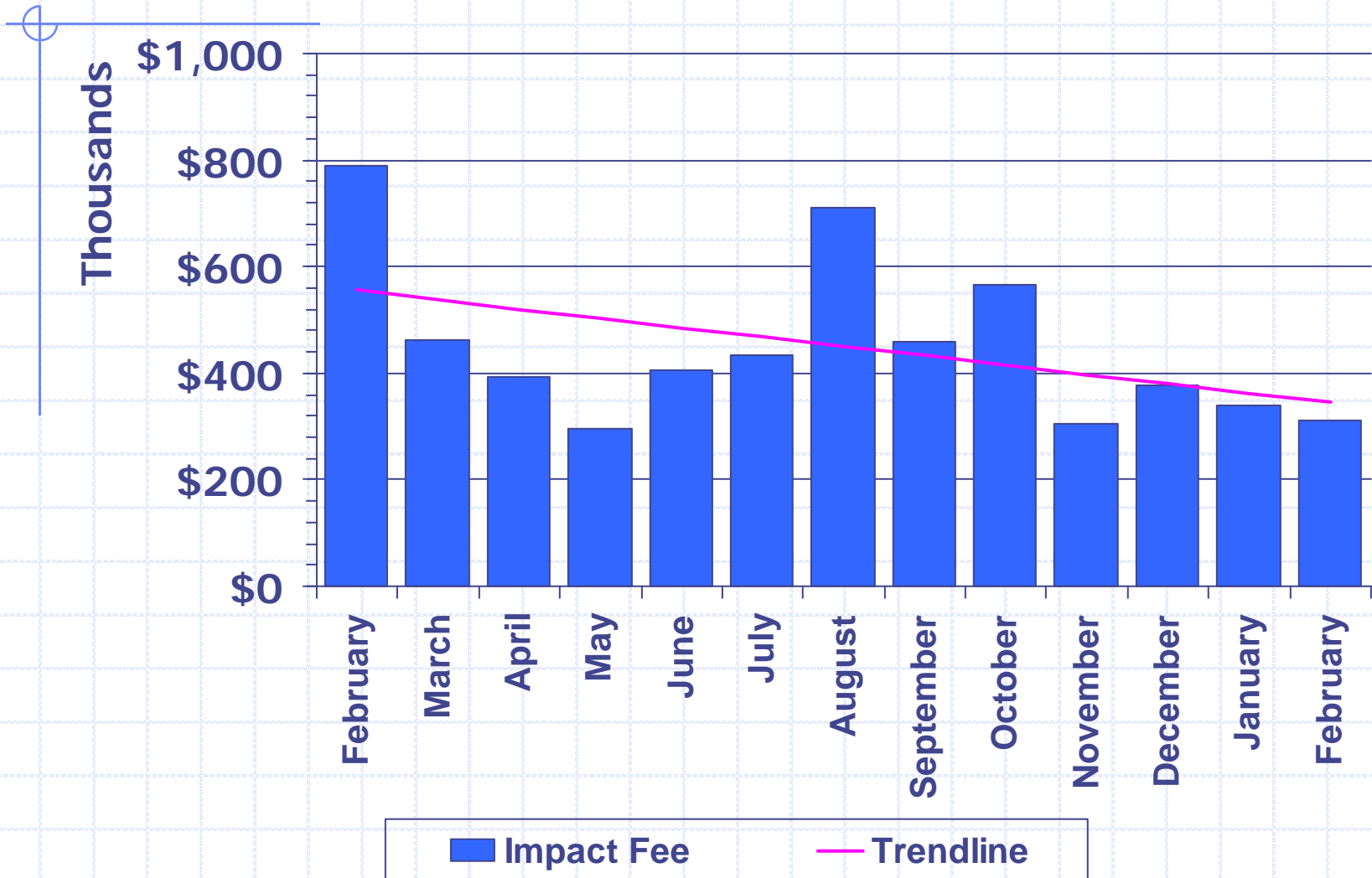
Nov. 2008 Co. – Lonza Walkersville, Inc. new construction (\$20M)

Feb. 2009 Co. – Costco new construction (\$19M)

# Excise Tax 2008 - 2009



# Impact Fee 2008 - 2009



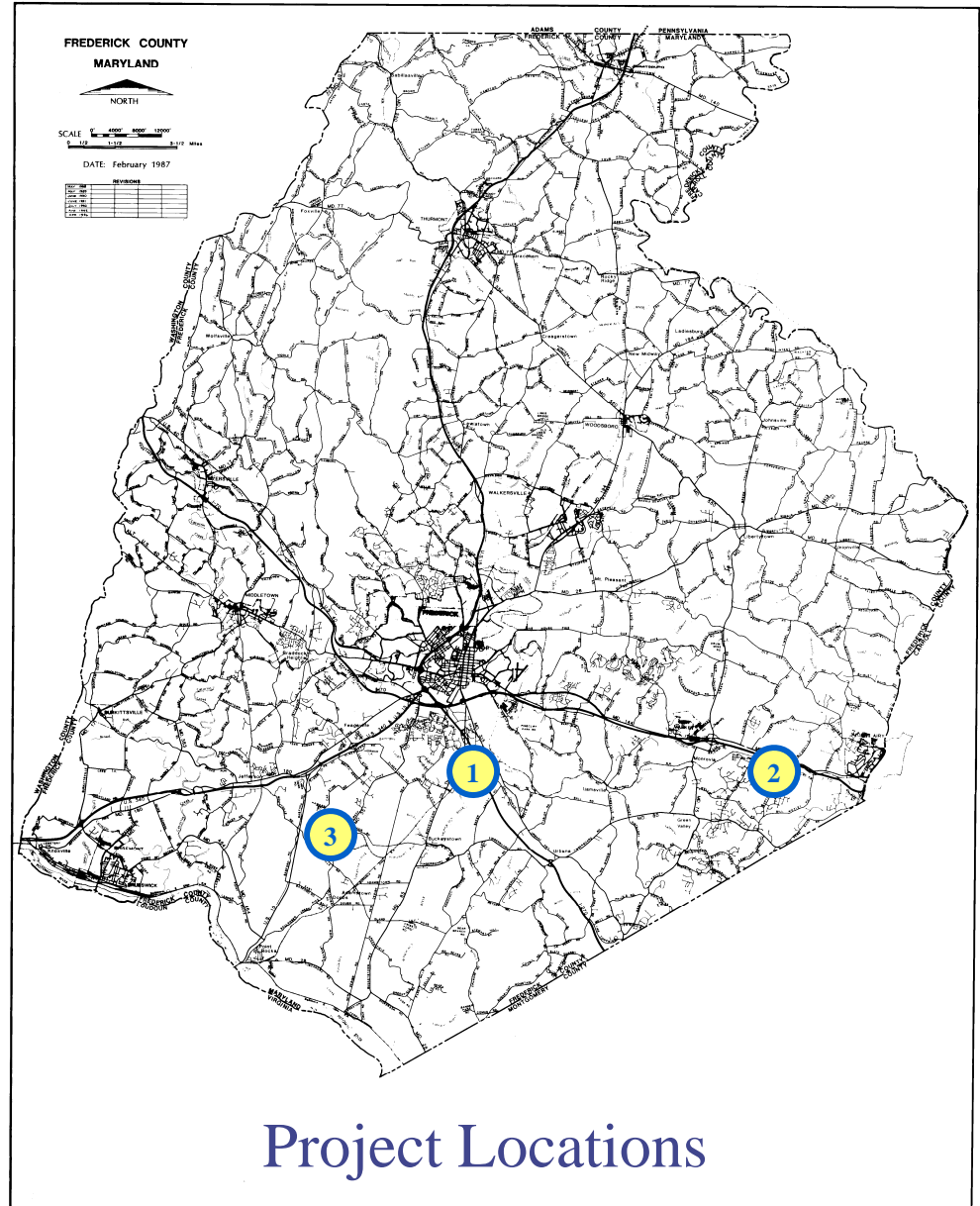



## LIST OF PROJECTS

(expected to be presented  
at upcoming FcPc meeting)

## County Projects

- |    |   |
|----|---|
| 1. | Executive Court (North) at Westview South |
| 2. | Damascus Road Community Church            |
| 3. | Stanford Industrial Park, Lot 11          |





# County Projects

# Executive Court (North) at Westview South

- ❑ Request: Phase II MXD (Execution) Plan Approval
- ❑ Location: North Executive Way (extended)
- ❑ Total Use: Five office buildings totaling 398,700 sq. ft.  
(two @ 65,000 sq. ft., two @ 80,000 sq. ft. & one @ 108,700 sq. ft.)
- ❑ Zoned: MXD
- ❑ Applicant: Matan Companies
- ❑ Engineer: Harris, Smariga & Associates, Inc.



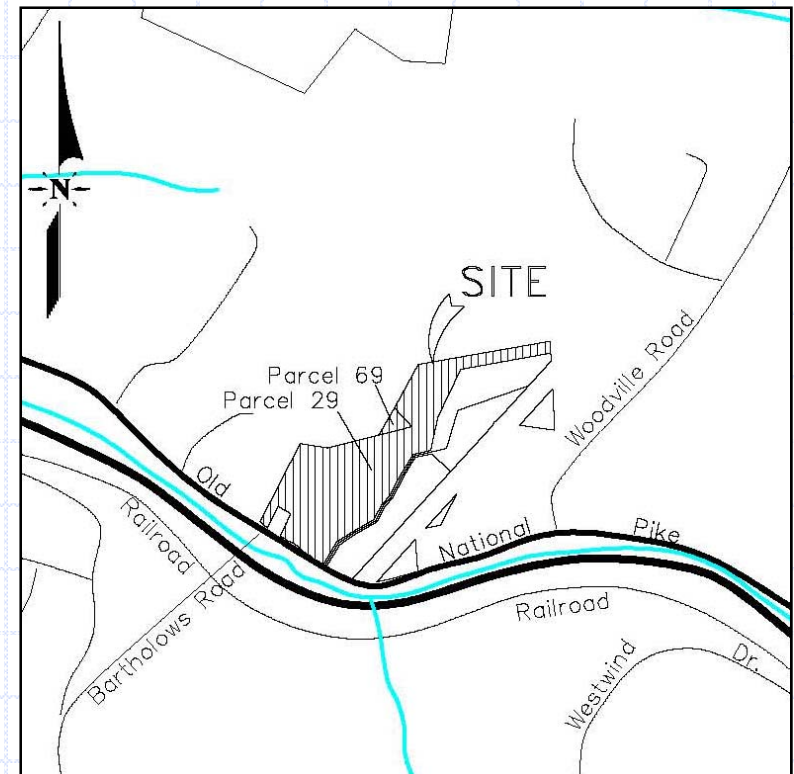


# Executive Court (North) at Westview South



# Damascus Road Community Church

- ❑ Request: Site Plan Approval
- ❑ Location: North side of Old National Pike near Bartholows Rd. intersection
- ❑ Total Use: 22,520 sq. ft. church
- ❑ Zoned: AG
- ❑ Applicant: DRCC Properties, Inc.
- ❑ Engineer: DMW





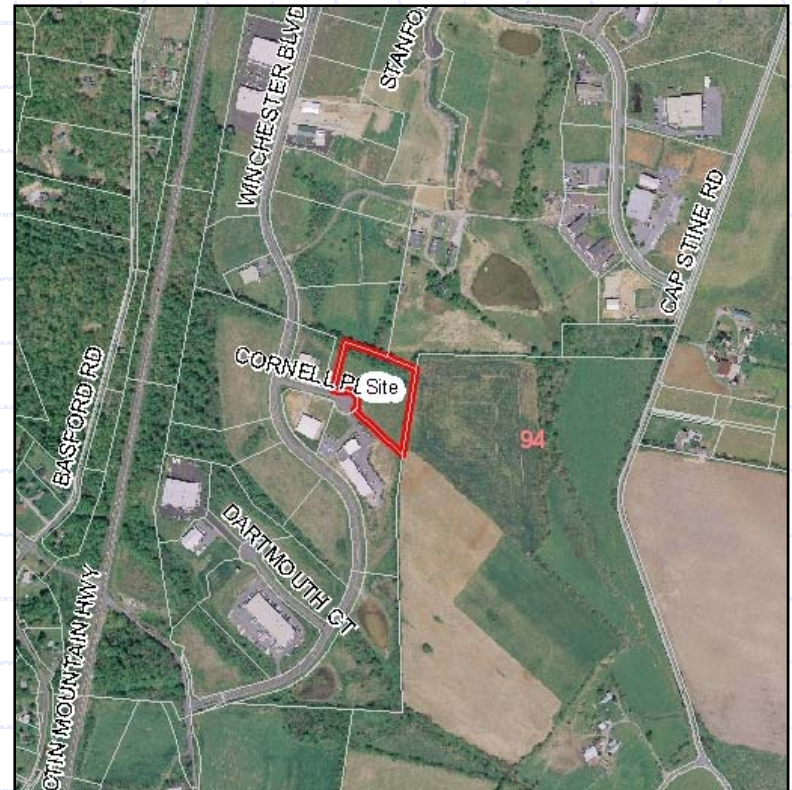
# Damascus Road Community Church





# Stanford Industrial Park, Lot 11

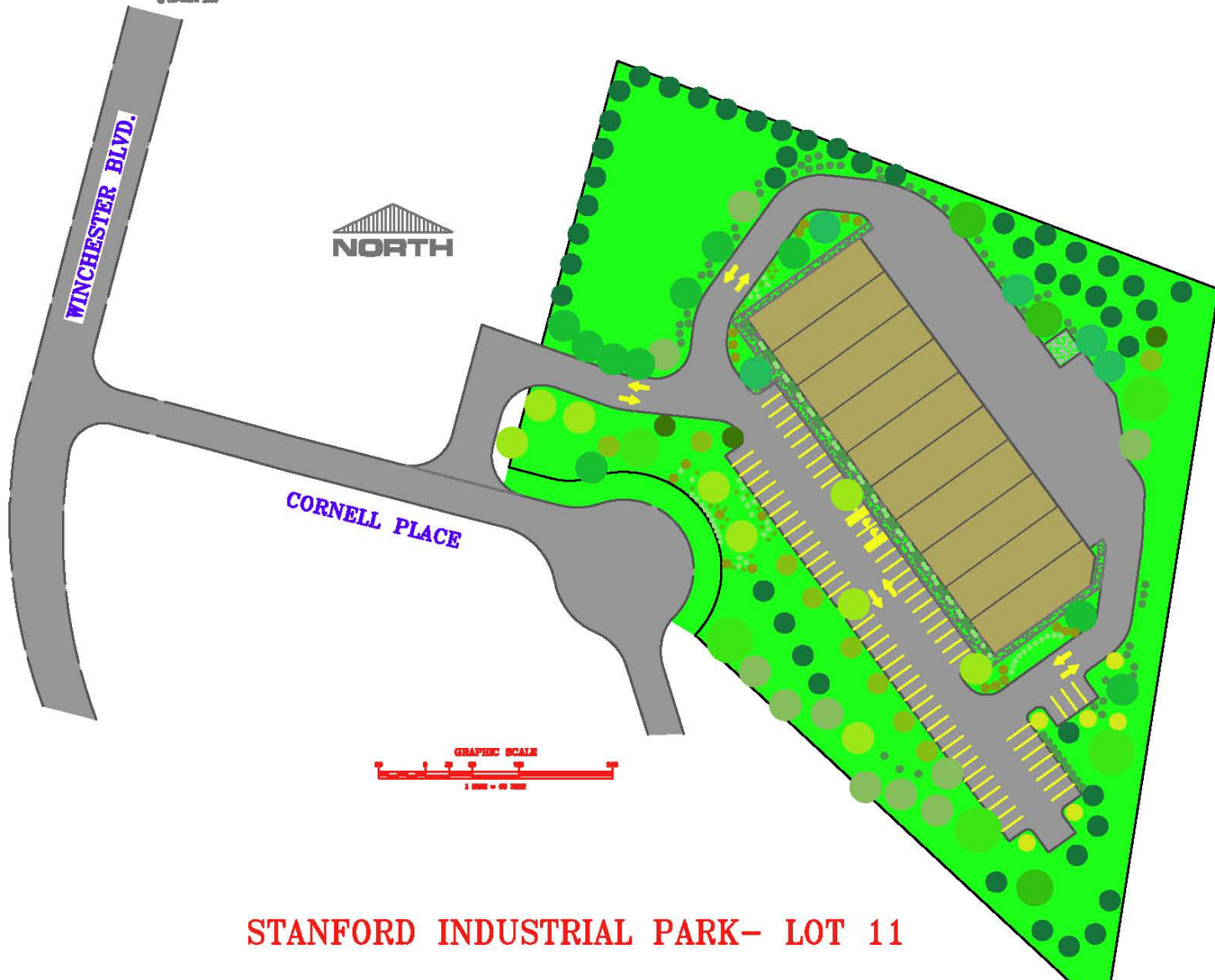
- ❑ Request: Site Plan Re-Approval
- ❑ Location: Terminus of Cornell Place in Stanford Industrial Park
- ❑ Total Use: Contractor's office and storage building totaling 29,888 sq. ft.
- ❑ Zoned: LI
- ❑ Applicant: John Delaplaine
- ❑ Engineer: Loss-Stair Civil Engineering, LLC



# Stanford Industrial Park, Lot 11

**LOSS-STAIR CIVIL ENGINEERING, INC.**  
CIVIL ENGINEERING - LAND PLANNING - SURVEYING

1000 S. GAVELLE STREET, SUITE 100, FARMINGTON, CT 06031 TEL. (203) 637-8900 FAX (203) 637-8700  
© COPYRIGHT 2009



**STANFORD INDUSTRIAL PARK- LOT 11**