

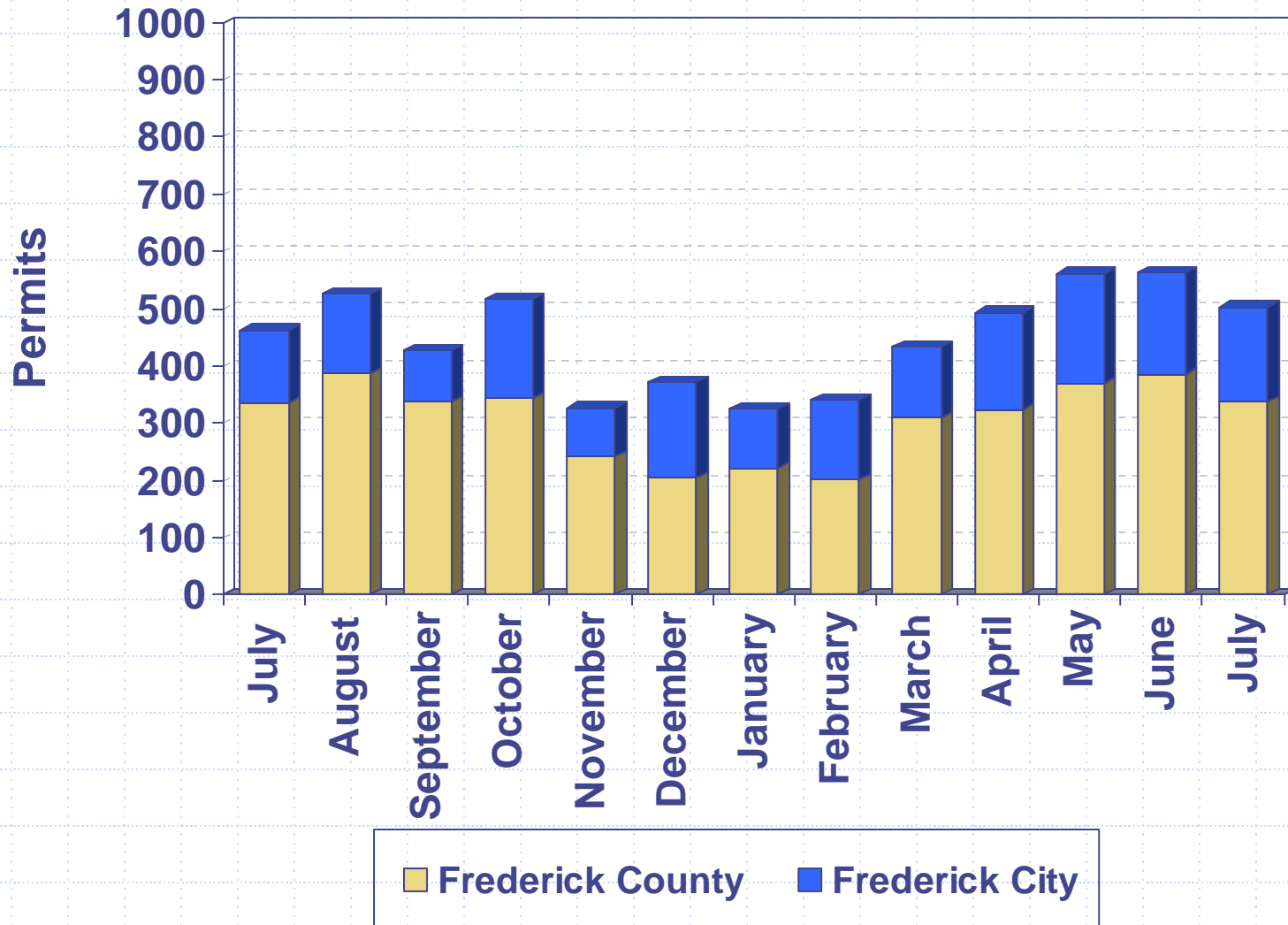


Division of Permitting and Development Review

- September 6, 2007
- Director's Development Data/Project Presentation to the County Commissioners

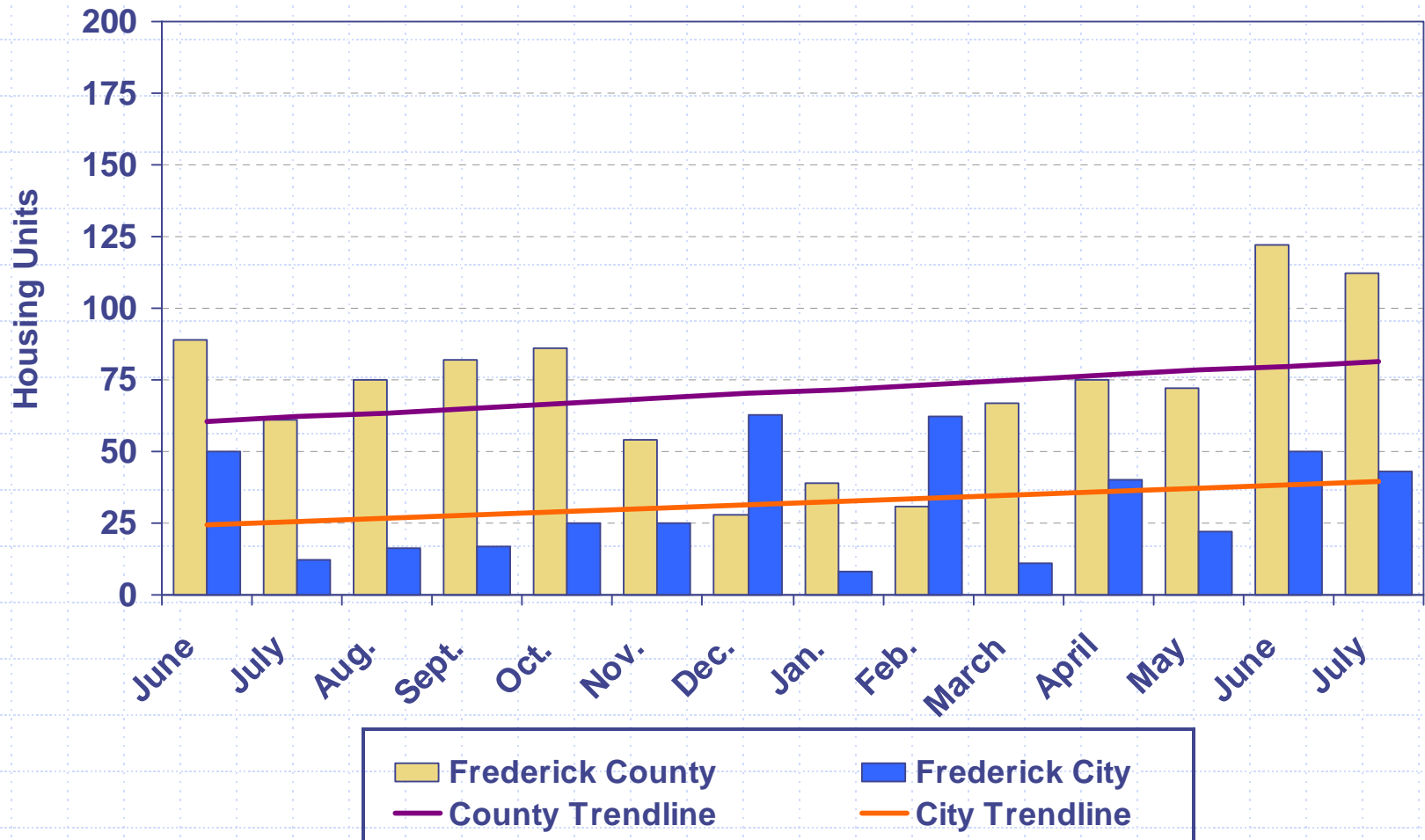


Building Permits Issued 2006 - 2007



Housing Unit Construction 2006 - 2007

Housing units based on issued permits



12 Month Total (August 2006 – July 2007): 1,225 units

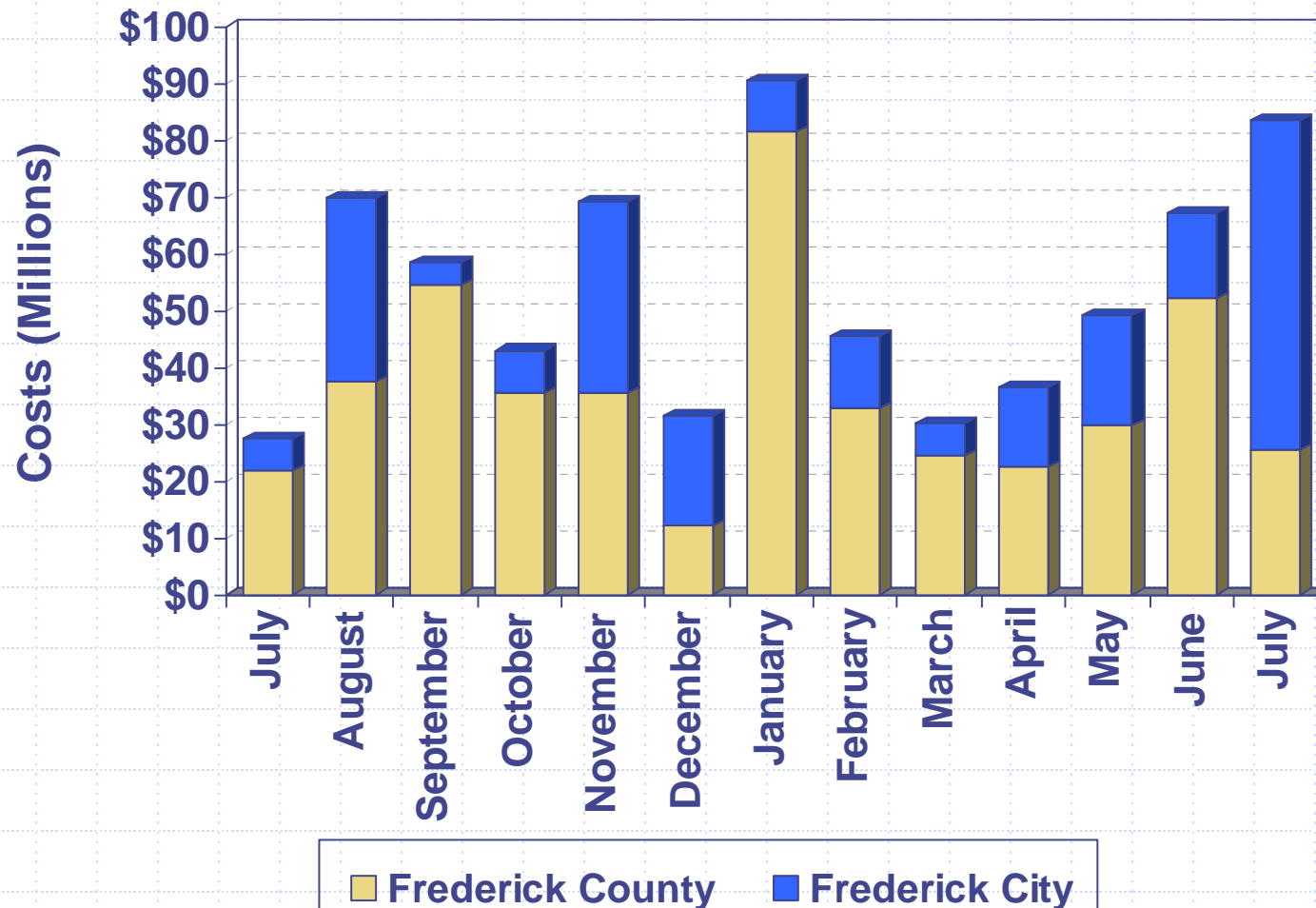
Housing Unit Construction

Comparison of Current Month and YTD Units

Current Month – July			
Year	County	City	Total
2007	112	43	155
2006	61	12	73
2005	63	17	80
2004	74	127	201
2003	152	32	184
5 Year Avg.	92	46	139

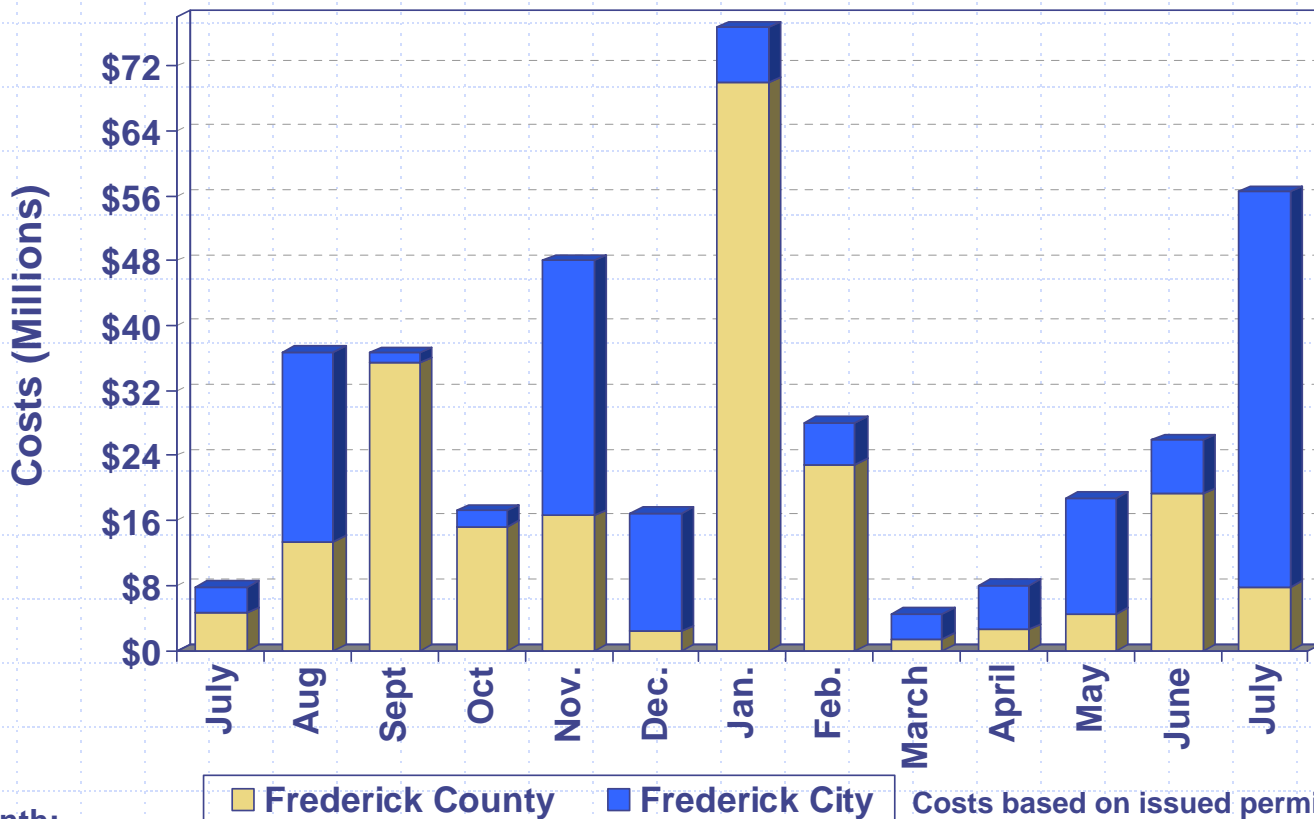
YTD – January - July			
Year	County	City	Total
2007	518	236	754
2006	563	250	813
2005	701	283	984
2004	684	338	1,022
2003	863	285	1,148
5 Year Avg.	666	278	944

Construction Costs 2006 - 2007



Costs based on issued permits

Commercial Construction Costs 2006 – 2007



Cost per month:

Aug. 2006 Co. – First Baptist Church of Fred. (\$4.3M) & Holy Family Catholic Church (\$2.7M); City – Ace Printing (\$17.4M)

Sept. 2006 Co. – Brunswick Waste Water Treatment Plan Addition (\$11M), Thurmont Regional Library (\$7M),
New Market Elementary School Addition (\$7M) & Alteration (\$2M)

Oct. 2006 Co. – St. Peter Church Addition (\$6.9M) & Thurmont Primary School Addition (\$4.5M)

Nov. 2006 Co. – Tuscarora High School (\$8.8M); City – Medimmune Inc. (\$26M)

Dec. 2006 City – Frederick's Rental Properties (\$6.8M) and Winchester Hall Alterations (\$2.6M)

Jan. 2007 Co. – Oakdale High School (\$58M)

Feb. 2007 Co. – Mount St. Mary's University (\$9.5M) and Conley Farm Corporate Center Shell (\$4M)

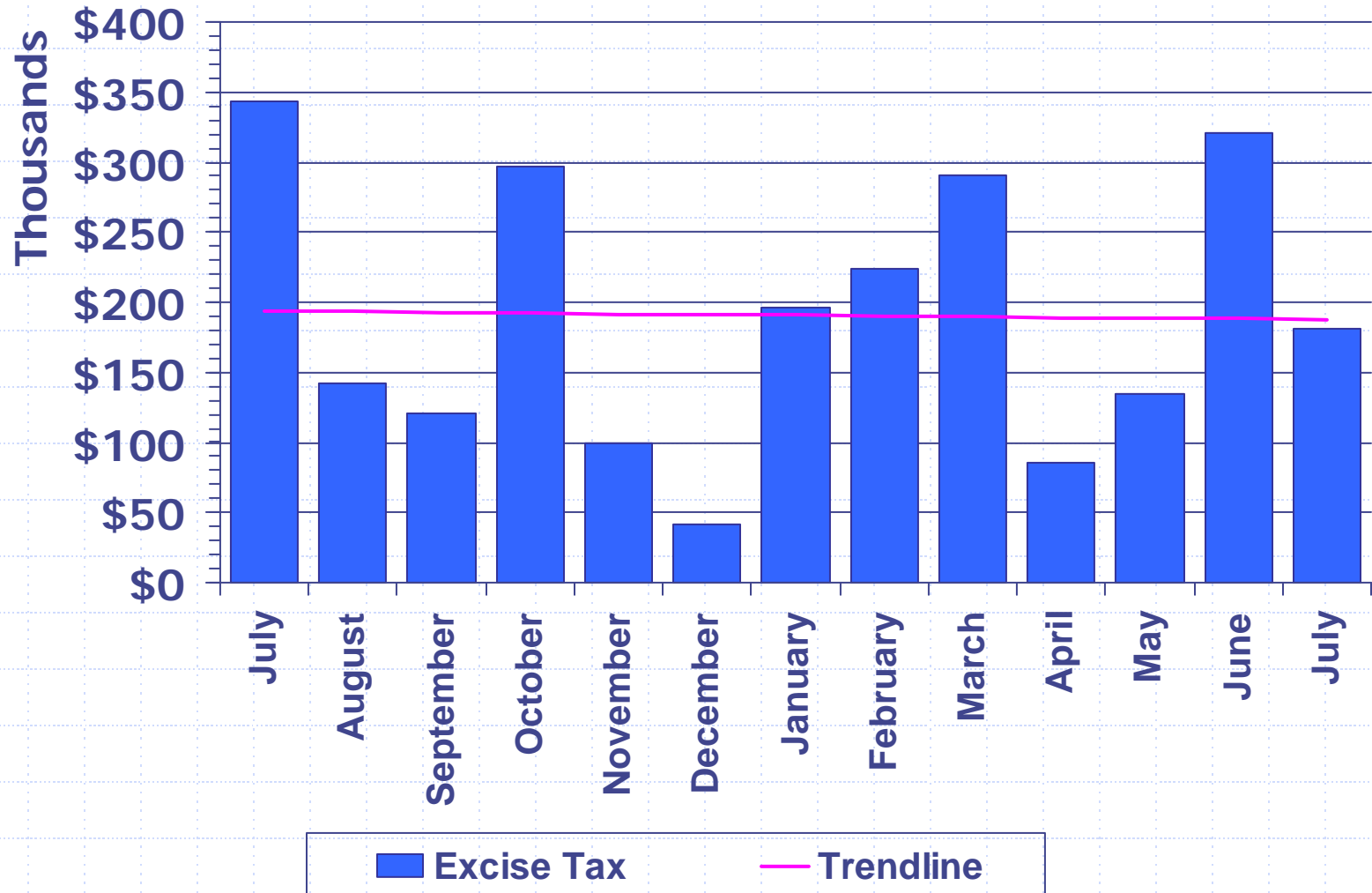
May 2007 City – BP Solar Alteration (\$12M)

June 2007 Co. – Wellington I, LLC Foundation & Core (\$6.7M) & Old Chapel Corporation Core Buildings (\$6.4M)

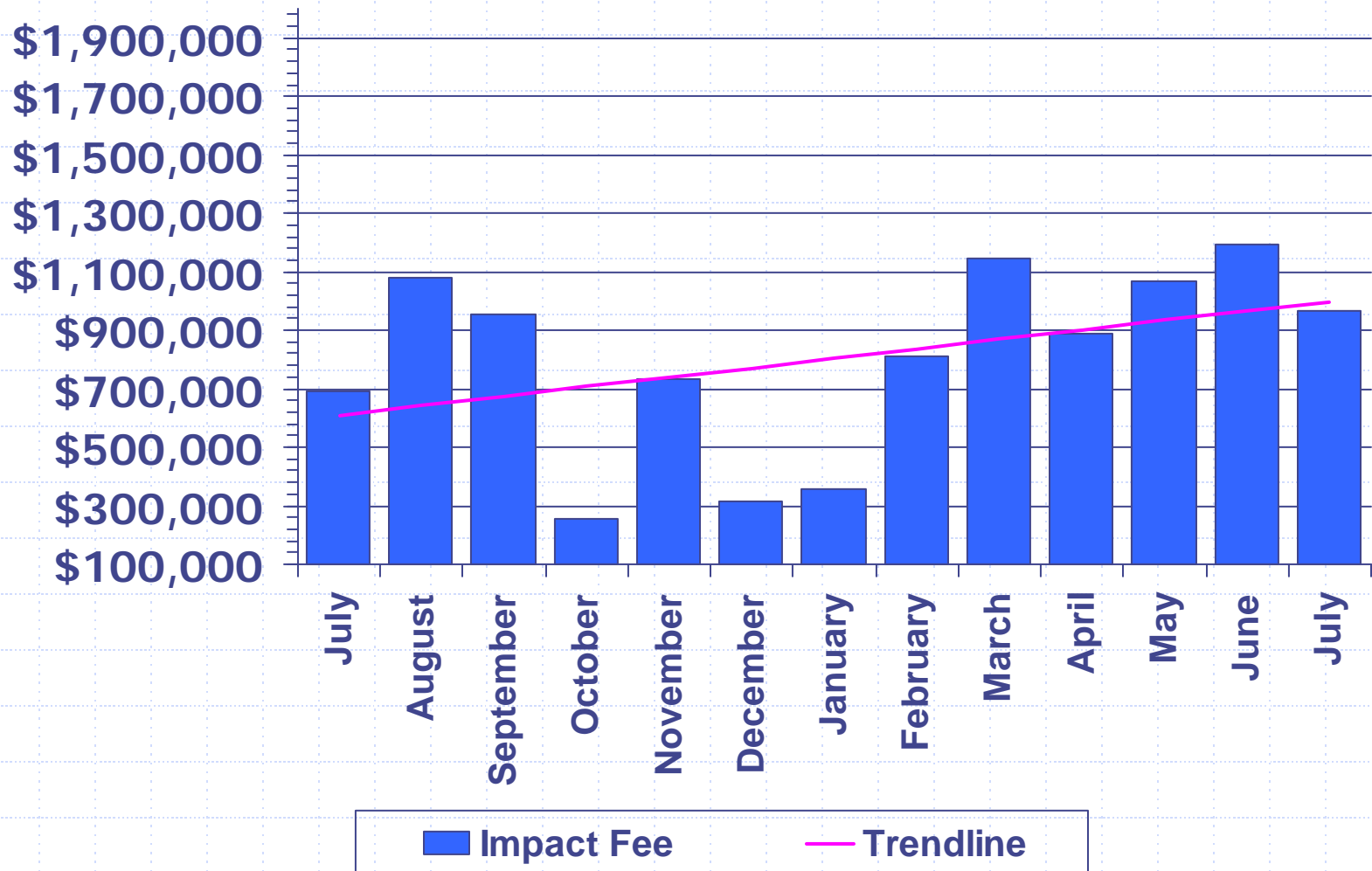
July 2007 City – Medimmune Inc. Alteration (\$47.9M)

Costs based on issued permits

Excise Tax 2006 - 2007



Impact Fee 2006 - 2007

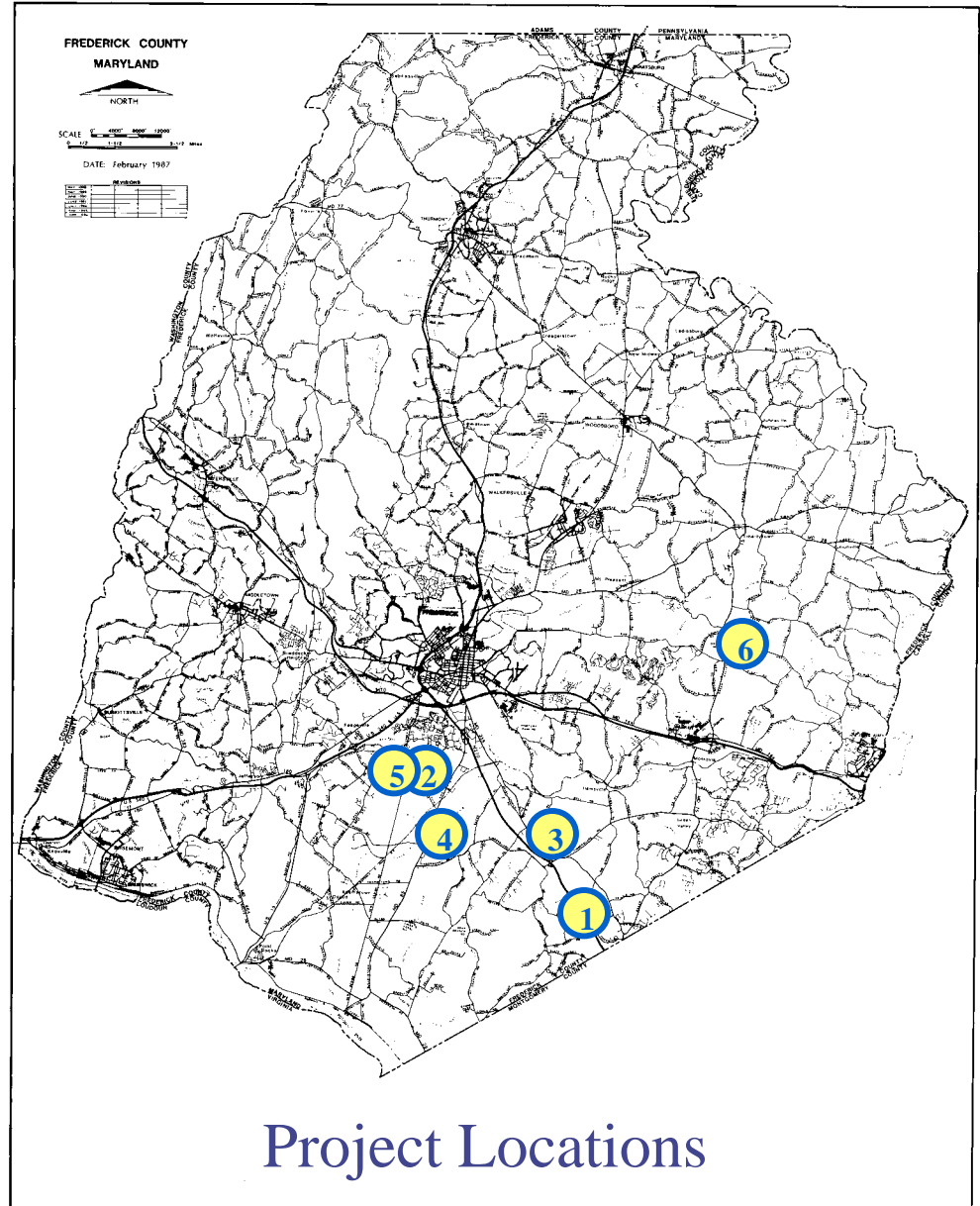


LIST OF PROJECTS

(expected to be presented
at upcoming FcPc meeting)

County Projects

1. Agriculture & Herbal
Processing and Integrated
Health Retreat Center
2. Abrams Property, Lot 208
3. Villages of Urbana, M-1D/E
4. St. John's Catholic Prep
5. Linton Farm - Phase III
6. Linganore High School
Replacement

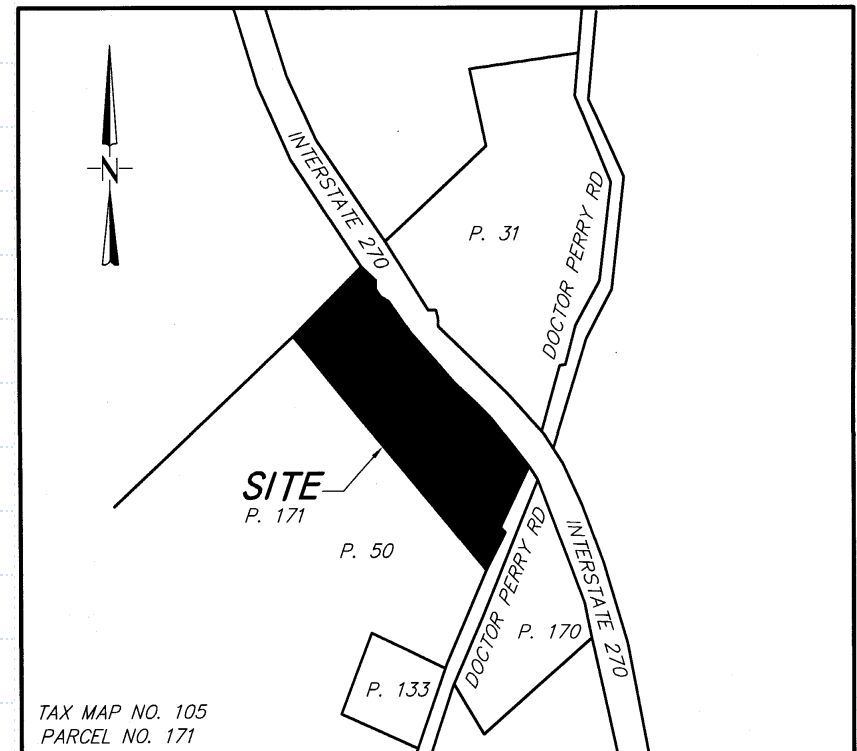




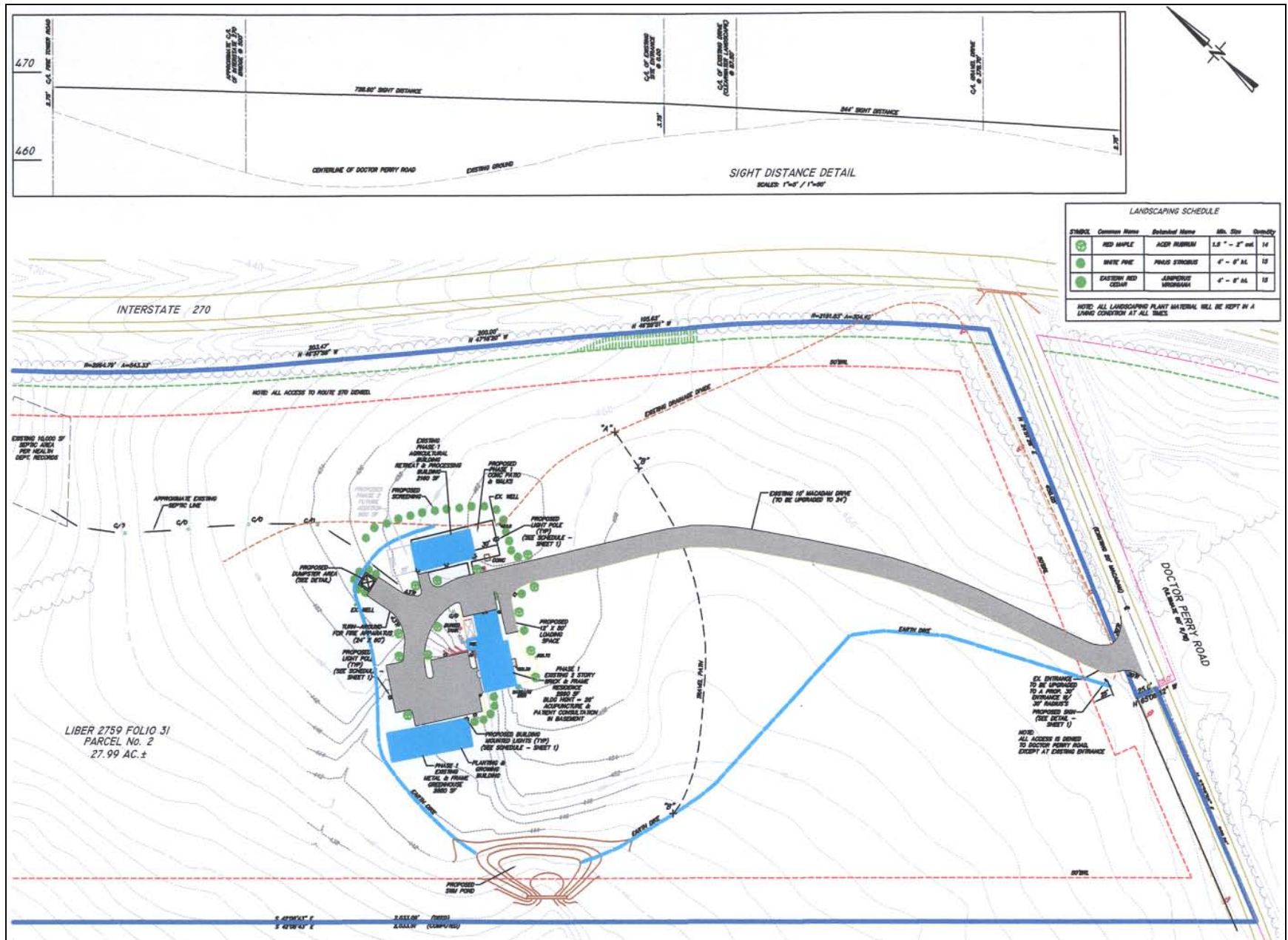
County Projects

Agriculture & Herbal Processing and Integrated Health Retreat Center

- ☐ Request: Site Plan Approval
- ☐ Location: West side of Dr. Perry Road, south of I-270
- ☐ Total Use: Three buildings (total 7,730 sq. ft.) including green house (2,880 sq. ft.), agricultural building (2,160 sq. ft), and residence (2,690 sq. ft.)
- ☐ Zoned: Agricultural
- ☐ Applicant: Dr. In-Su Kim
- ☐ Engineer: Lavelle & Associates, Inc.

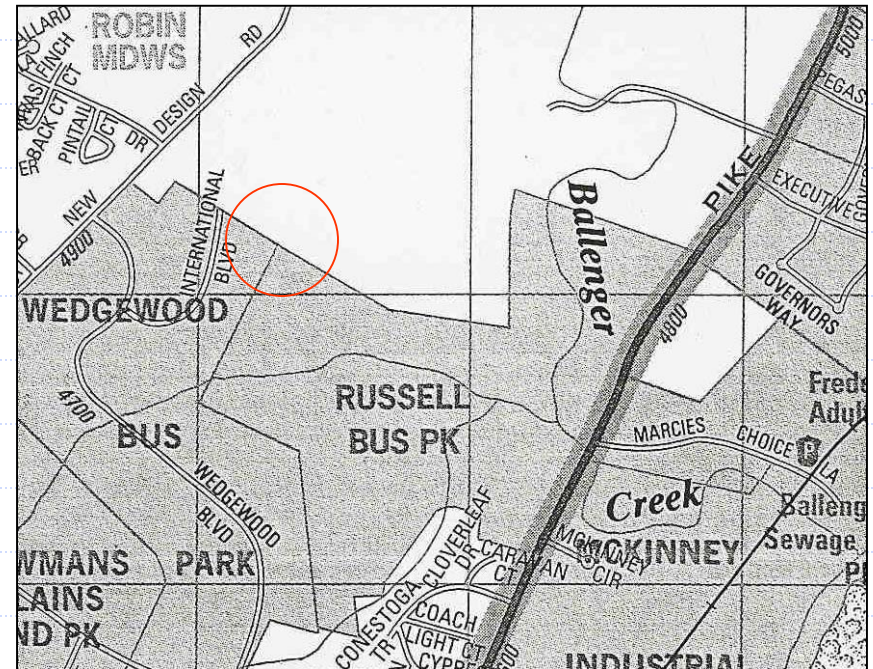


Agriculture & Herbal Processing and Integrated Health Retreat Center



Abrams Property, Lot 208

- ❑ Request: Site Plan Approval
- ❑ Location: Southeast quadrant of New Design Road and Executive Way (extended)
- ❑ Total Use: One two-story office (66,000 sq. ft.) and two one-story flex-space buildings (34,500 and 43,000 sq. ft.), 143,500 total sq. ft.
- ❑ Zoned: MXD
- ❑ Applicant: Abrams Development Group
- ❑ Engineer: Rodgers Consulting, Inc.

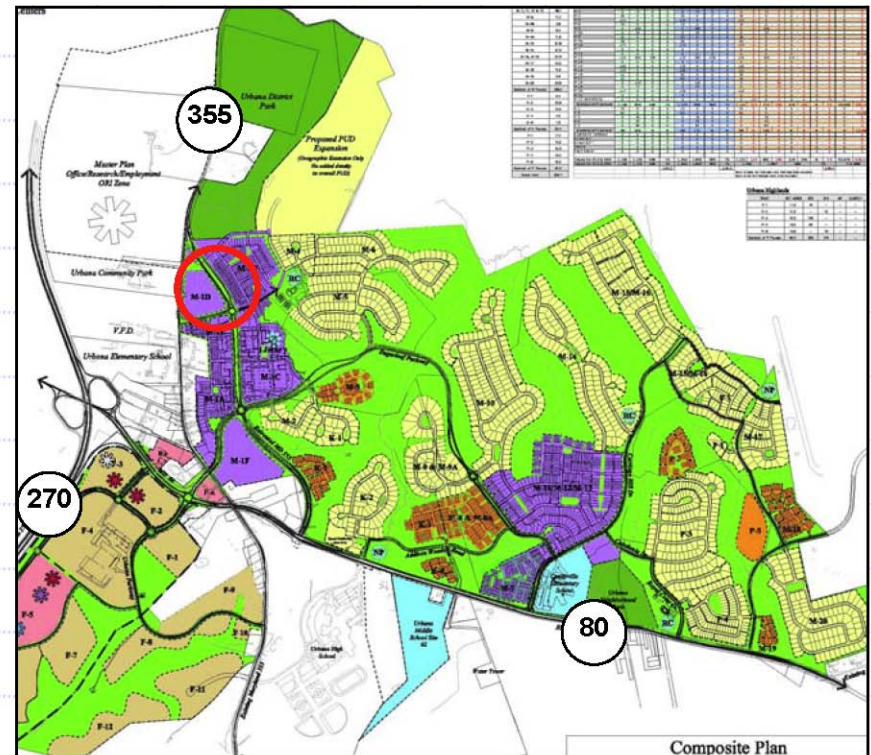


Abrams Property, Lot 208



Villages of Urbana, M-1D/E

- ❑ Request: Preliminary Plat/Site Plan Approval
- ❑ Location: Southeast quadrant of Relocated Rt. 355 and Spriggs Street
- ❑ Total Use: 212 condo units
- ❑ Zoned: PUD
- ❑ Applicant: Monocacy Land Company
- ❑ Engineer: Rodgers Consulting, Inc.

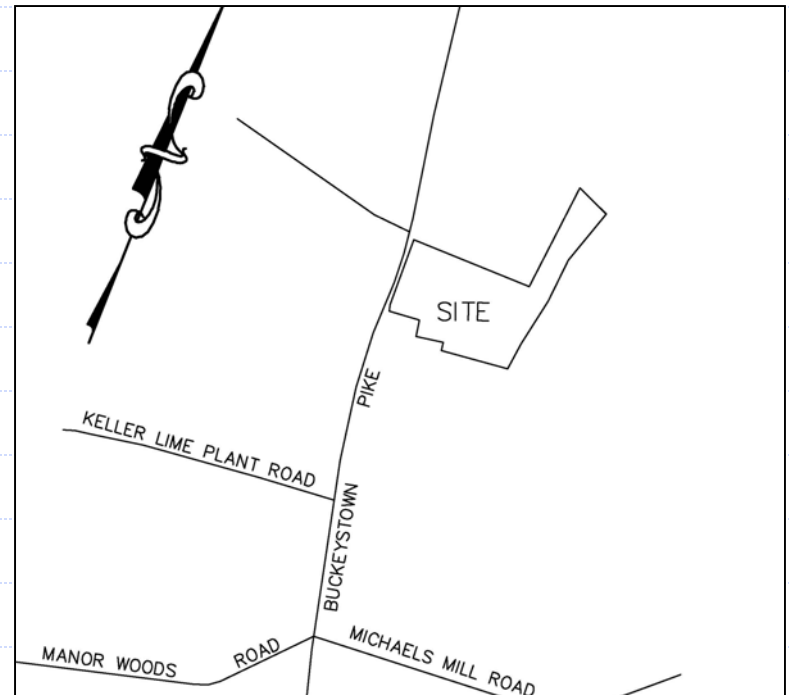


Villages of Urbana, M-1 D/E



St. John's Catholic Prep

- ❑ Request: Site Plan Approval
- ❑ Location: East side of Rt. 85, south of Lime Kiln Road
- ❑ Total Use: One private high school (93,000 sq. ft.)
- ❑ Zoned: Agricultural
- ❑ Applicant: St. John's Literary Institution at Prospect Hall
- ❑ Engineer: Harris, Smariga and Associates, Inc.



ST. THOMAS MORE ACADEMY

PROPOSED PAVING

PROPOSED SHA DEDICATION

PROPOSED LIGHT LOCATION N.T.S.
(SEE R.H. PLAN FOR DETAILS)

LEGEND

PROPOSED PAVING

PROPOSED SHA DEDICATION

PROPOSED LIGHT LOCATION N.T.S.
(SEE R.H. PLAN FOR DETAILS)

Harris Smarig
Planning
125 South Carroll
301-662-4488

REVISIONS:
4/13/07 PER COUNTY COM
7/16/07 PER COUNTY COM

SITE SIGNATURE

LEGEND

SLOPES > 25%

PROPOSED PAVING

PROPOSED SHA DEDICATION

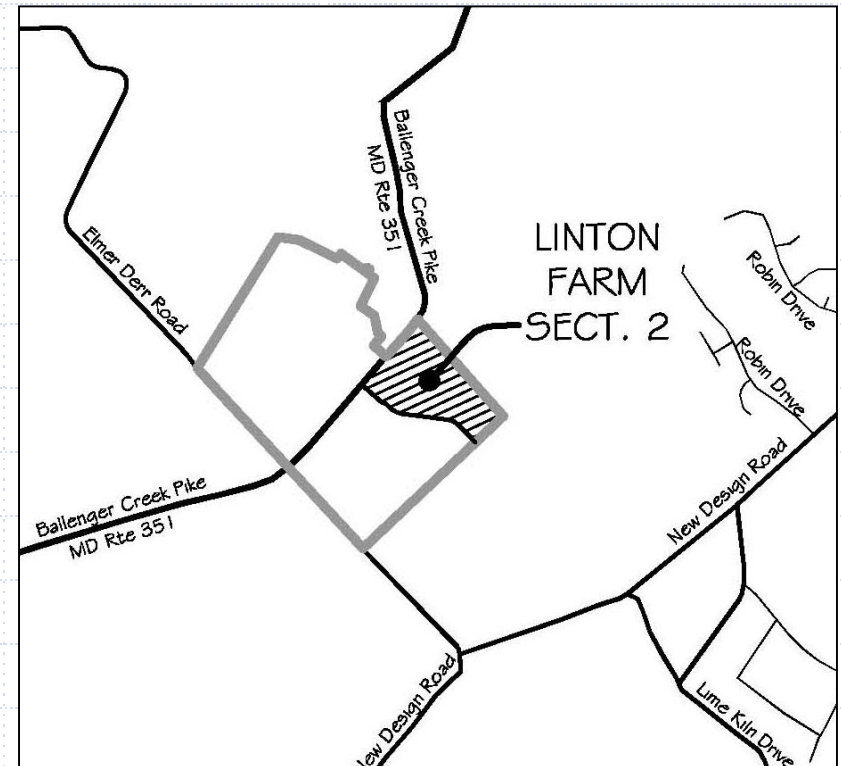
PROPOSED LIGHT LOCATION N.T.S.
(SEE RHL PLAN FOR DETAILS)

Harris, Smarig
Planners,
125 South Carroll
301-662-4488

REVISIONS:
4/13/07 PER COUNTY COM
7/16/07 PER COUNTY COM

Linton Farm – Phase III

- ❑ Request: Combined Preliminary Plan and Site Plan Approval of Section II
- ❑ Location: Northeast of Elmer Derr Road and Ballenger Creek Pike intersection
- ❑ Total Use: 170 total units -10 SFH, 88 townhomes, 72 condo (2 over 2) units
- ❑ Zoned: PUD
- ❑ Applicant: The Drees Company
- ❑ Engineer: Rodgers Consulting, Inc.



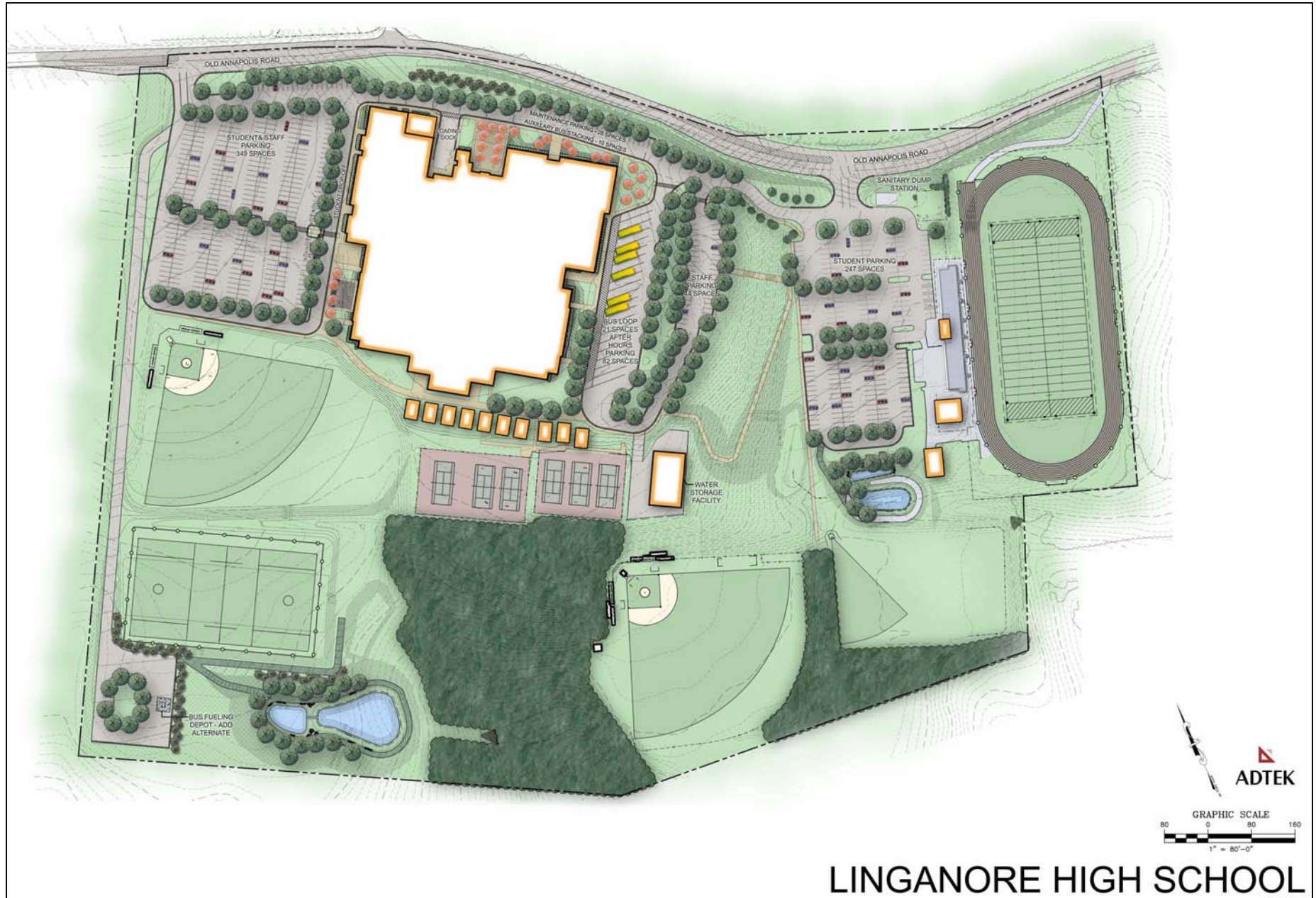
Linton Farm – Phase III



Linganore High School Replacement

- ❑ Request: Site Plan Approval
- ❑ Location: South side of Old Annapolis Road, east of Green Valley Road
- ❑ Total Use: One high school (266,045 sq. ft.), water tank storage shed (6,000 sq. ft.), ten future temporary classrooms and a fuel station
- ❑ Zoned: Agricultural
- ❑ Applicant: Frederick County Public Schools
- ❑ Engineer: Adtek Engineers, Inc.

Linganore High School Replacement



Linganore High School Replacement

