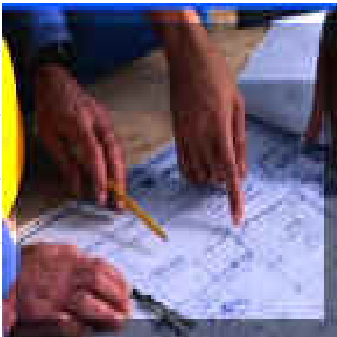


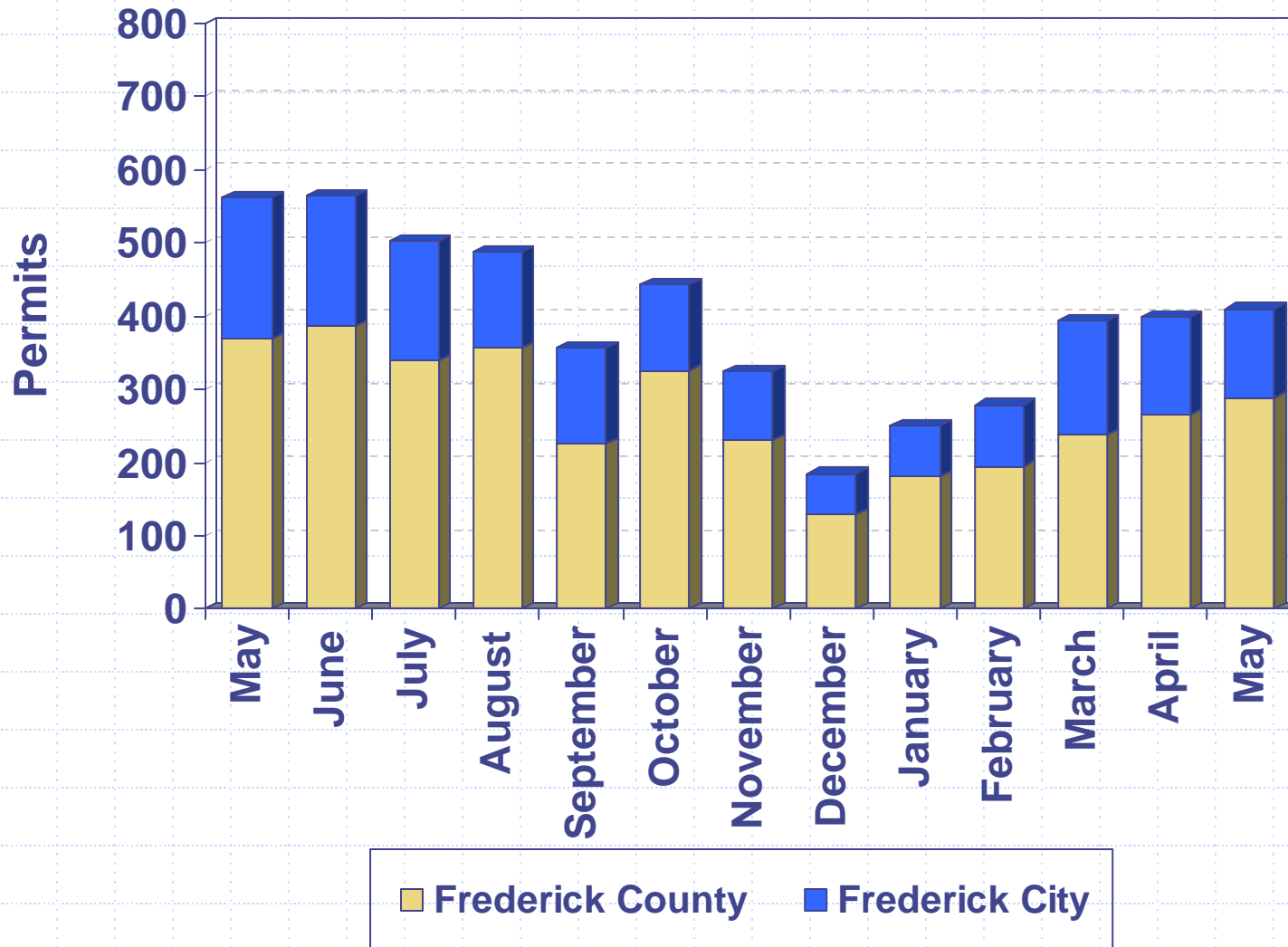


Division of Permitting and Development Review

- July 10, 2008
- Director's Development Data/Project Presentation to the County Commissioners

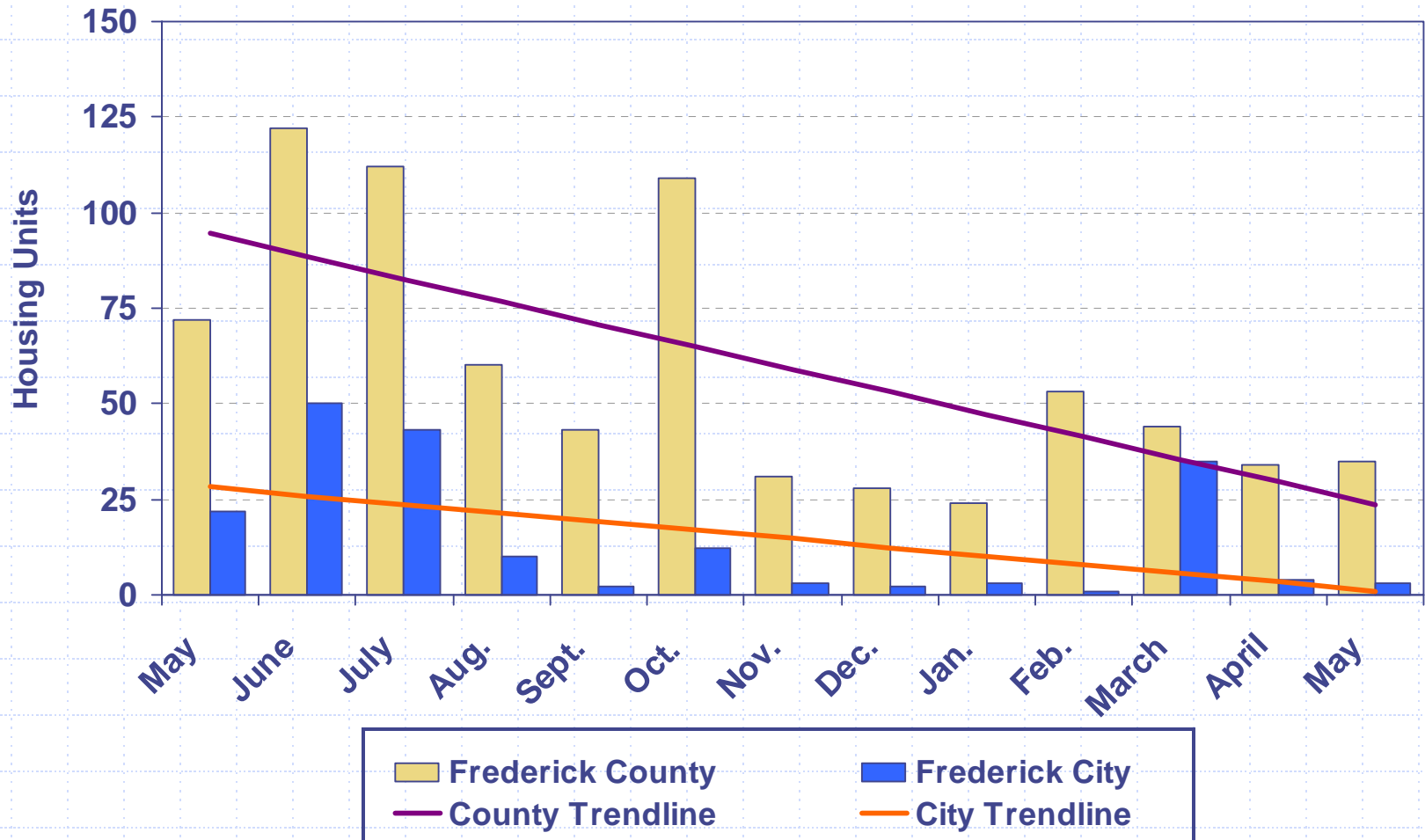


Building Permits Issued 2007 - 2008



Housing Unit Construction 2007 - 2008

Housing units based on issued permits



12 Month Total (June 2007 – May 2008): 863 units

Housing Unit Construction

Comparison of Current Month and YTD Units

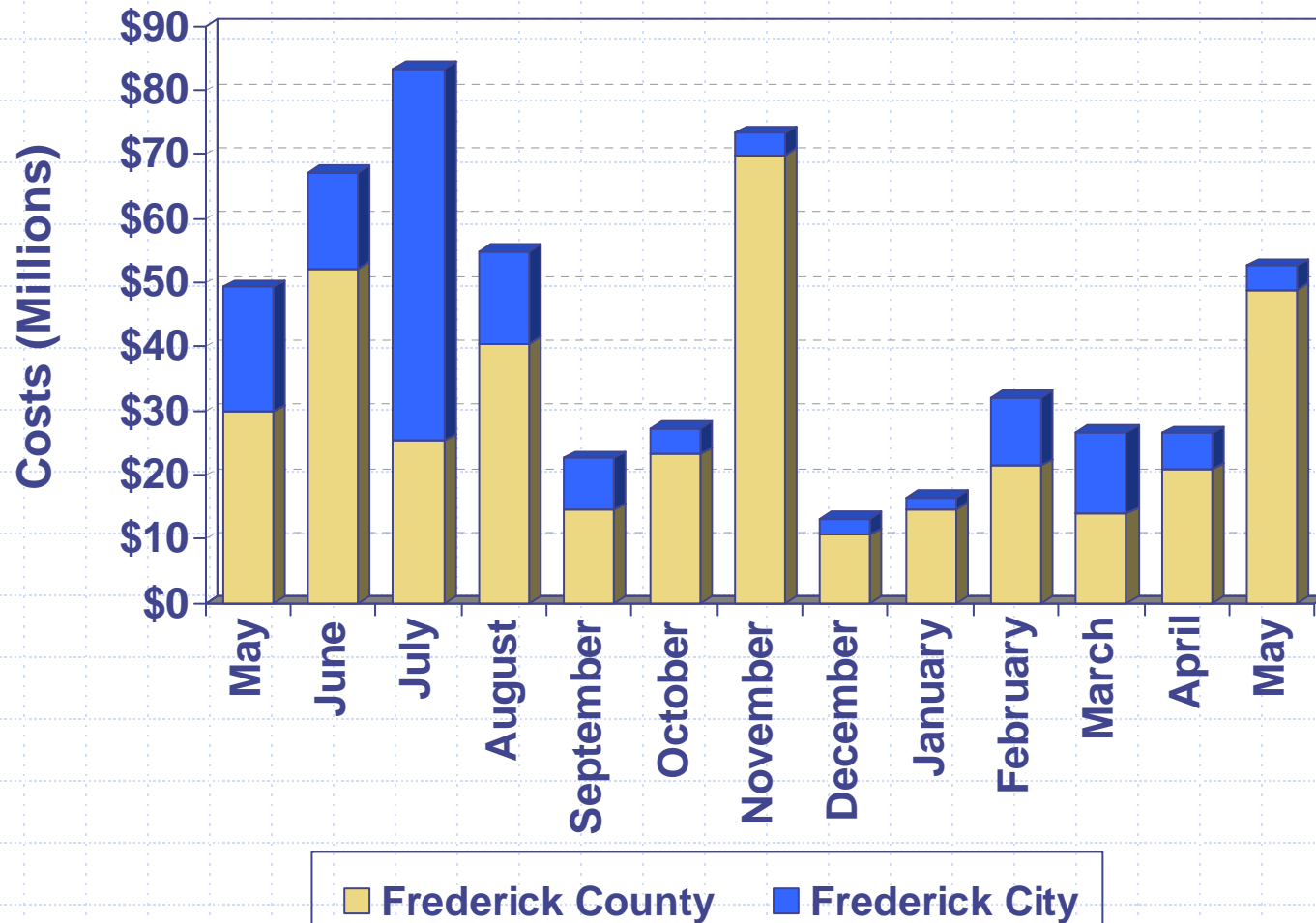
Current Month – May 2008

Year	County	City	Total
2008	35	3	38
2007	72	22	94
2006	72	18	90
2005	148	17	165
2004	94	42	136
5 Year Avg.	84	20	105

YTD – May 2008

Year	County	City	Total
2008	190	46	236
2007	284	143	427
2006	413	188	601
2005	549	182	731
2004	481	205	686
5 Year Avg.	383	153	536

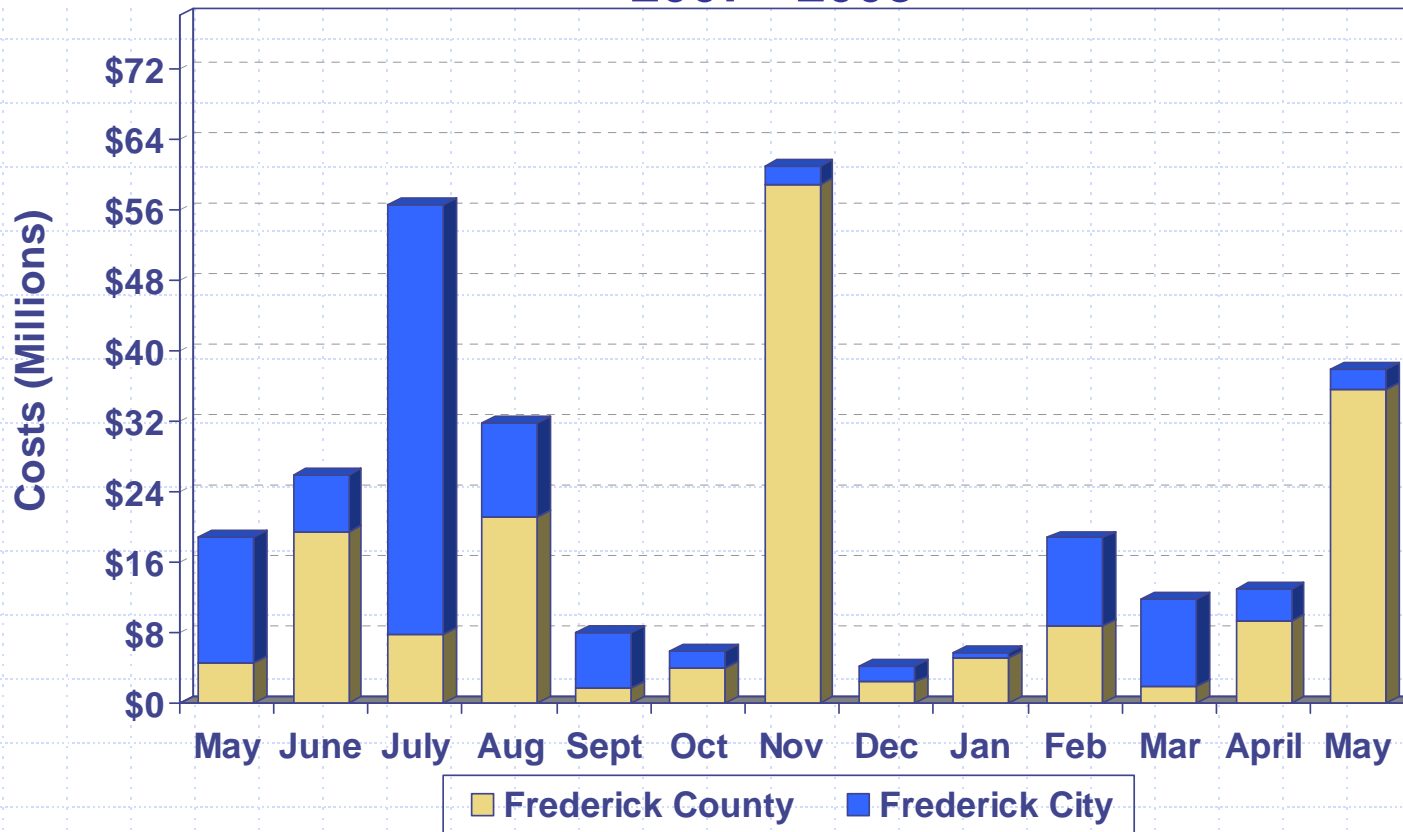
Construction Costs 2007 - 2008



Costs based on issued permits

Commercial Construction Costs

2007 - 2008



Frederick County Frederick City

Costs based on issued permits

Cost per month:

May 2007 City – BP Solar Alteration (\$12M)

June 2007 Co. – Wellington I, LLC Foundation & Core (\$6.7M) & Old Chapel Corporation Core Buildings (\$6.4M)

July 2007 City – Medimmune Inc. Alteration (\$47.9M)

Aug. 2007 Co. - County Transfer Station (\$13M); City - BP Solar Alter. (\$9M)

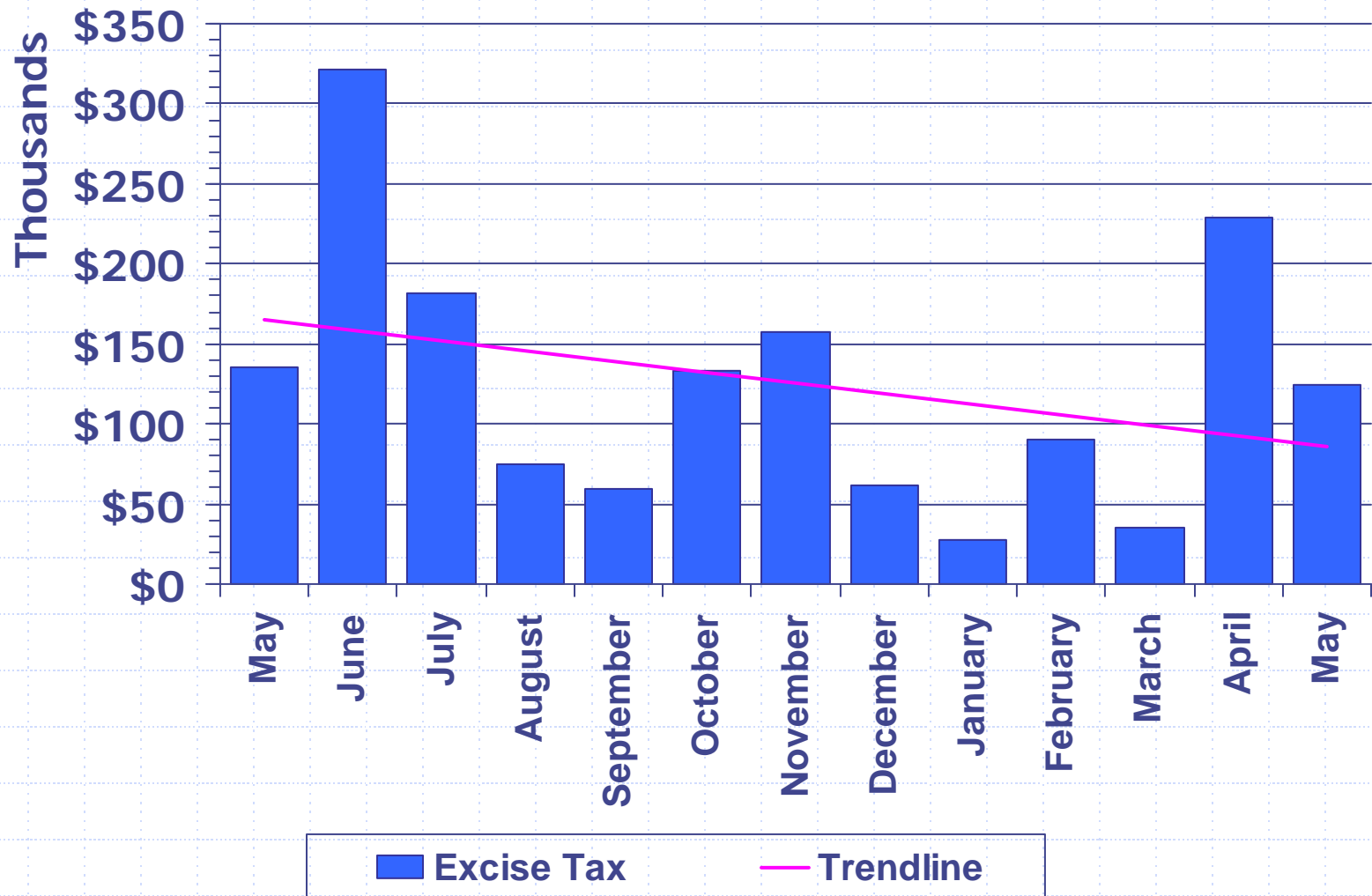
Nov. 2007 Co. – New Design Road Treatment Plant (\$51M)

Feb. 2008 City – Charles River Labs Alteration (\$8.2M)

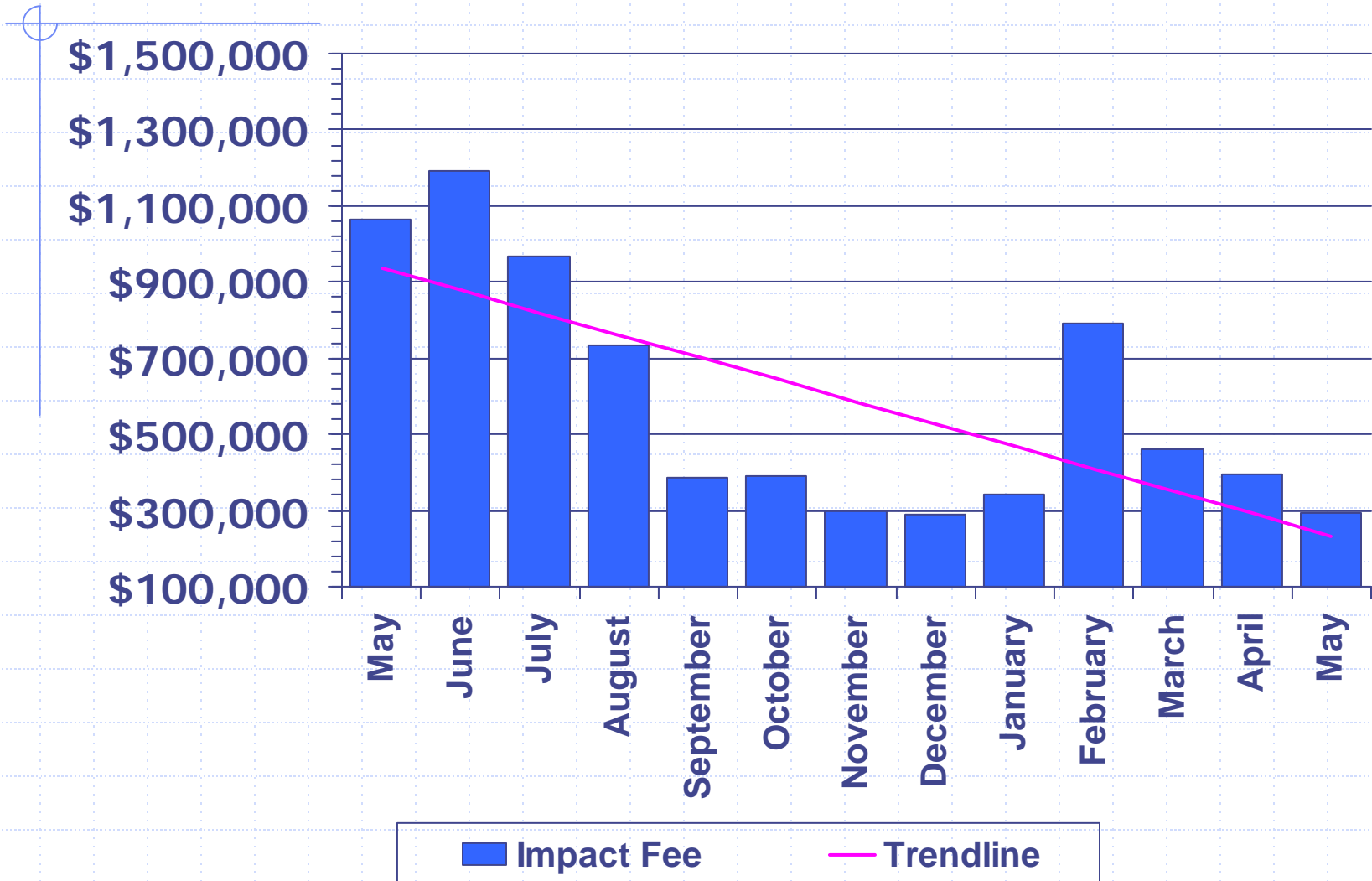
March 2008 City – Riverside Corporation (\$6M)

May 2008 Co. – Mount Saint Mary's University building alterations (\$24M)

Excise Tax 2007 - 2008



Impact Fee 2007 - 2008

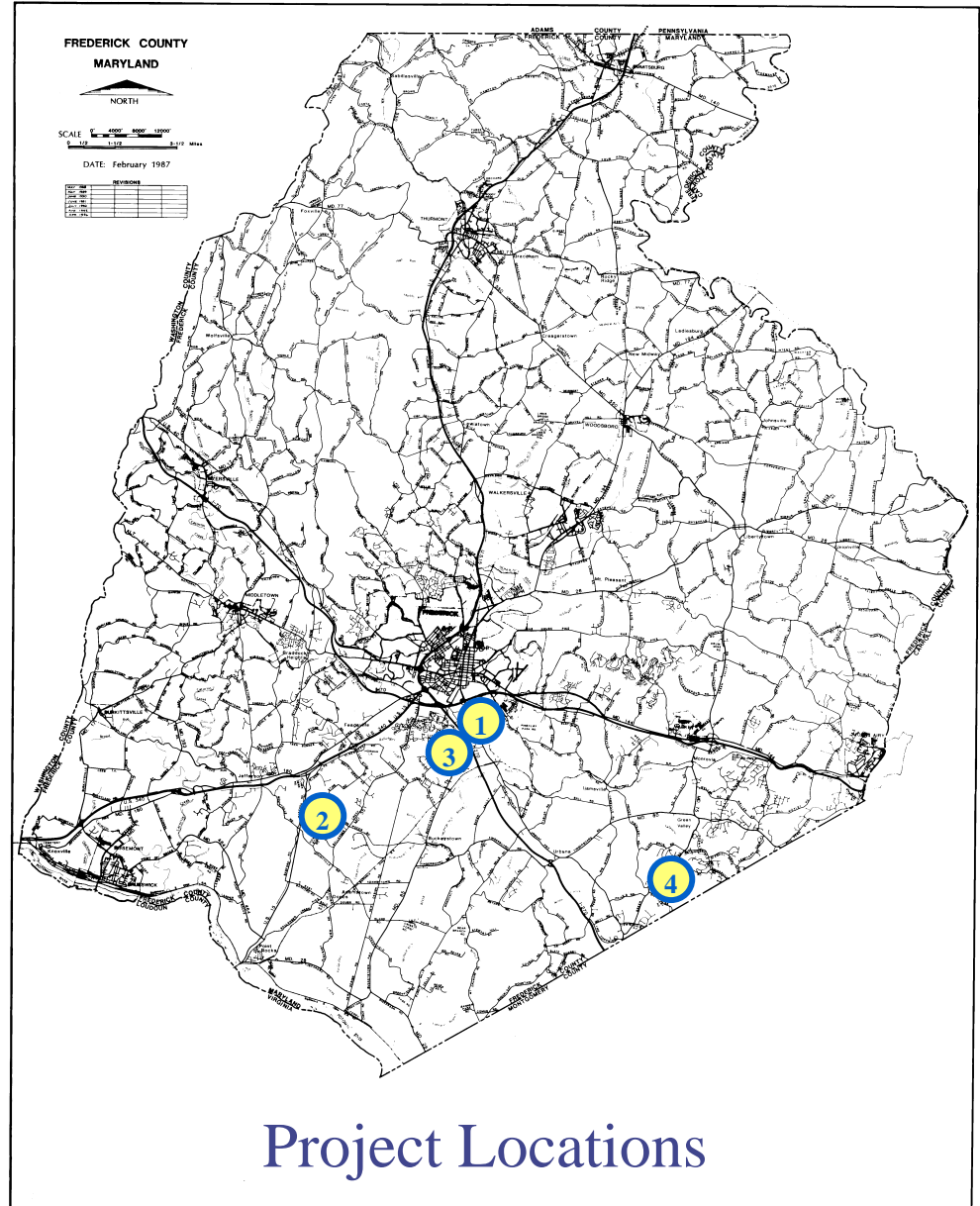


LIST OF PROJECTS

(expected to be presented
at upcoming FcPc meeting)

County Projects

1. Francis Scott Key Gateway Shoppes
2. Stanford Trading Center VIII
3. Westview 3 Office Campus
4. Knolls of Windsor

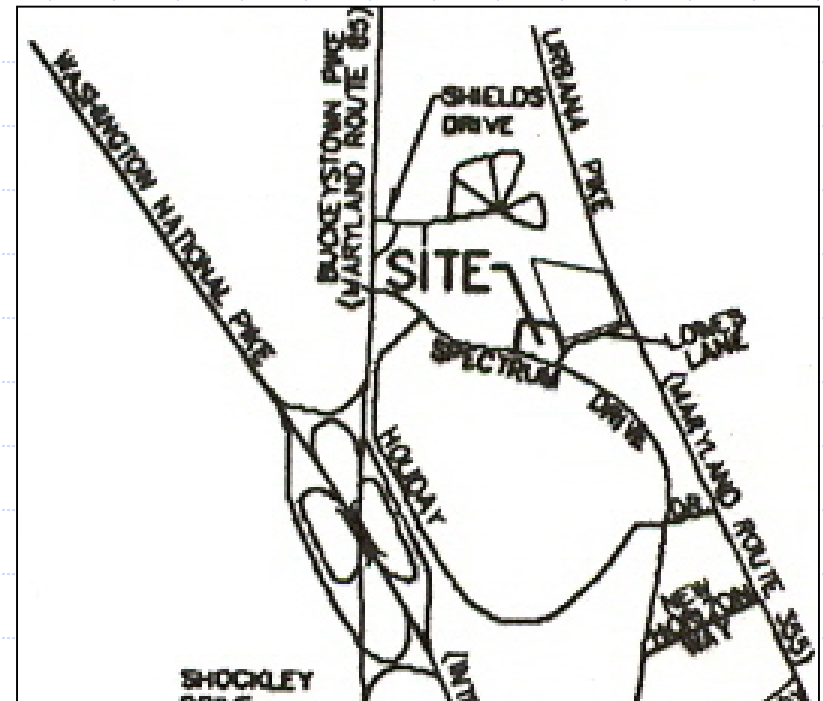




County Projects

Francis Scott Key Gateway Shoppes

- ❑ Request: Site Plan Approval
- ❑ Location: Corner of Lowe's La. and Spectrum Dr.
- ❑ Total Use: Shopping center including three buildings 5,270 sq. ft., 6,077 sq.ft. & 7,273 sq. ft. (total 18,620 sq. ft.)
- ❑ Zoned: General Commercial
- ❑ Applicant: Spectrum Development LLC
- ❑ Engineer: Harris, Smariga & Associates, Inc.

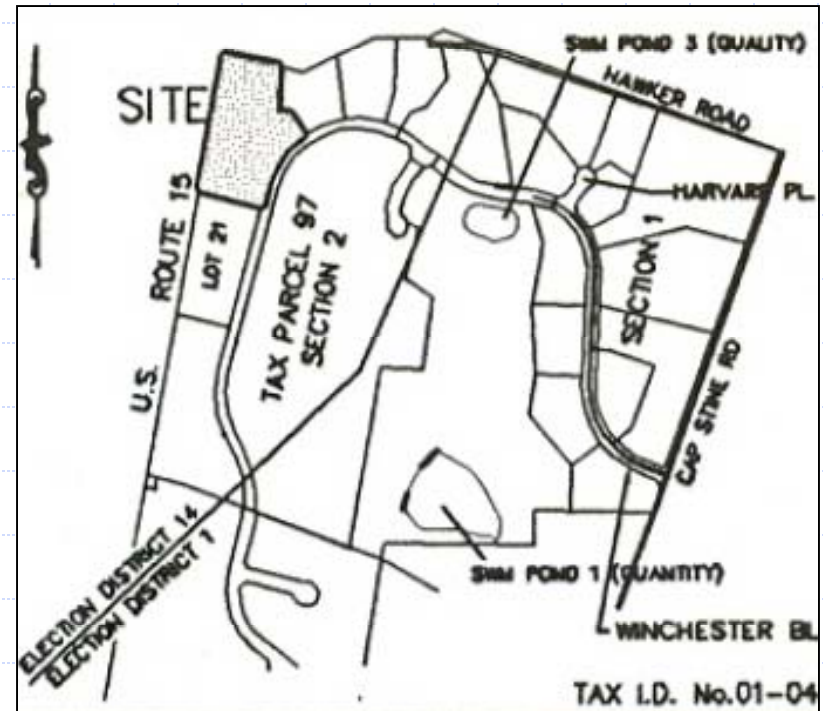


Francis Scott Key Gateway Shoppes

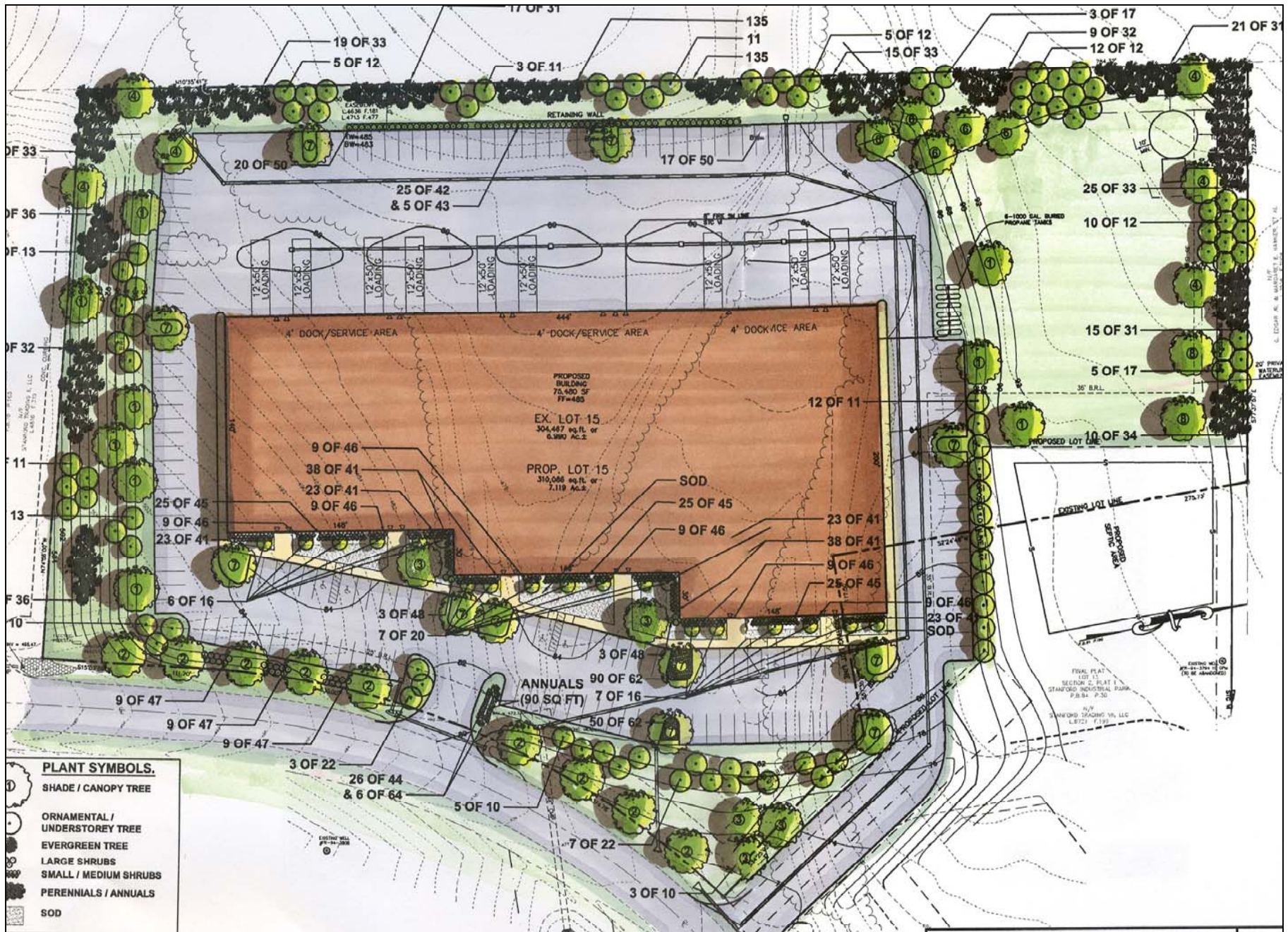


Stanford Trading Center VIII

- ☐ Request: Site Plan Approval
- ☐ Location: West side of Winchester Blvd., West of Stanford Court
- ☐ Total Use: Office/warehouse building (75,480 sq. ft.)
- ☐ Zoned: LI
- ☐ Applicant: Ruppert Properties
- ☐ Engineer: Harris, Smariga & Associates, Inc.

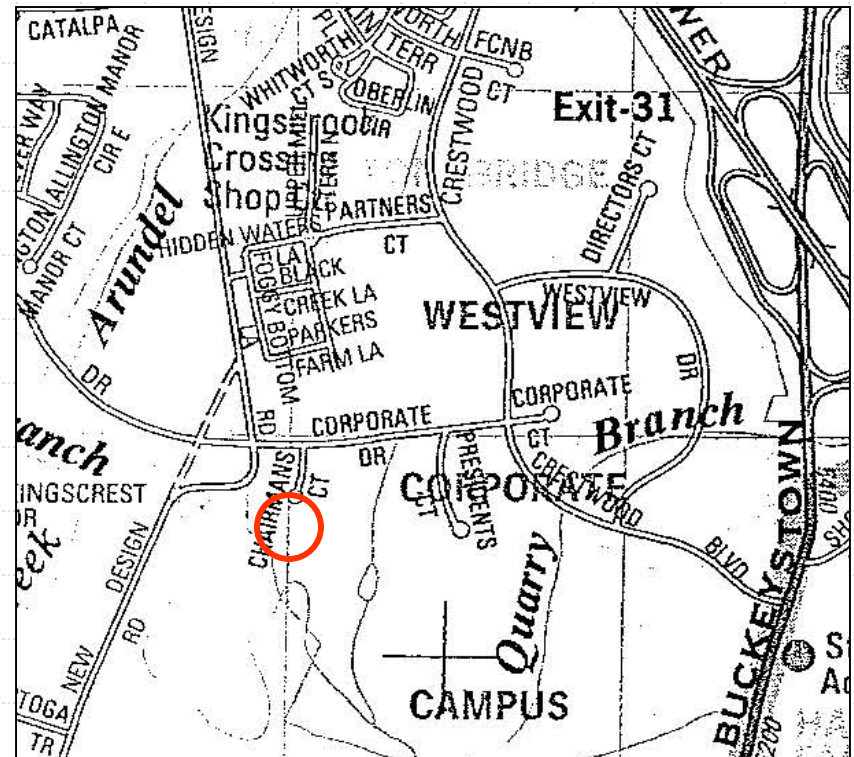


Stanford Trading Center VIII

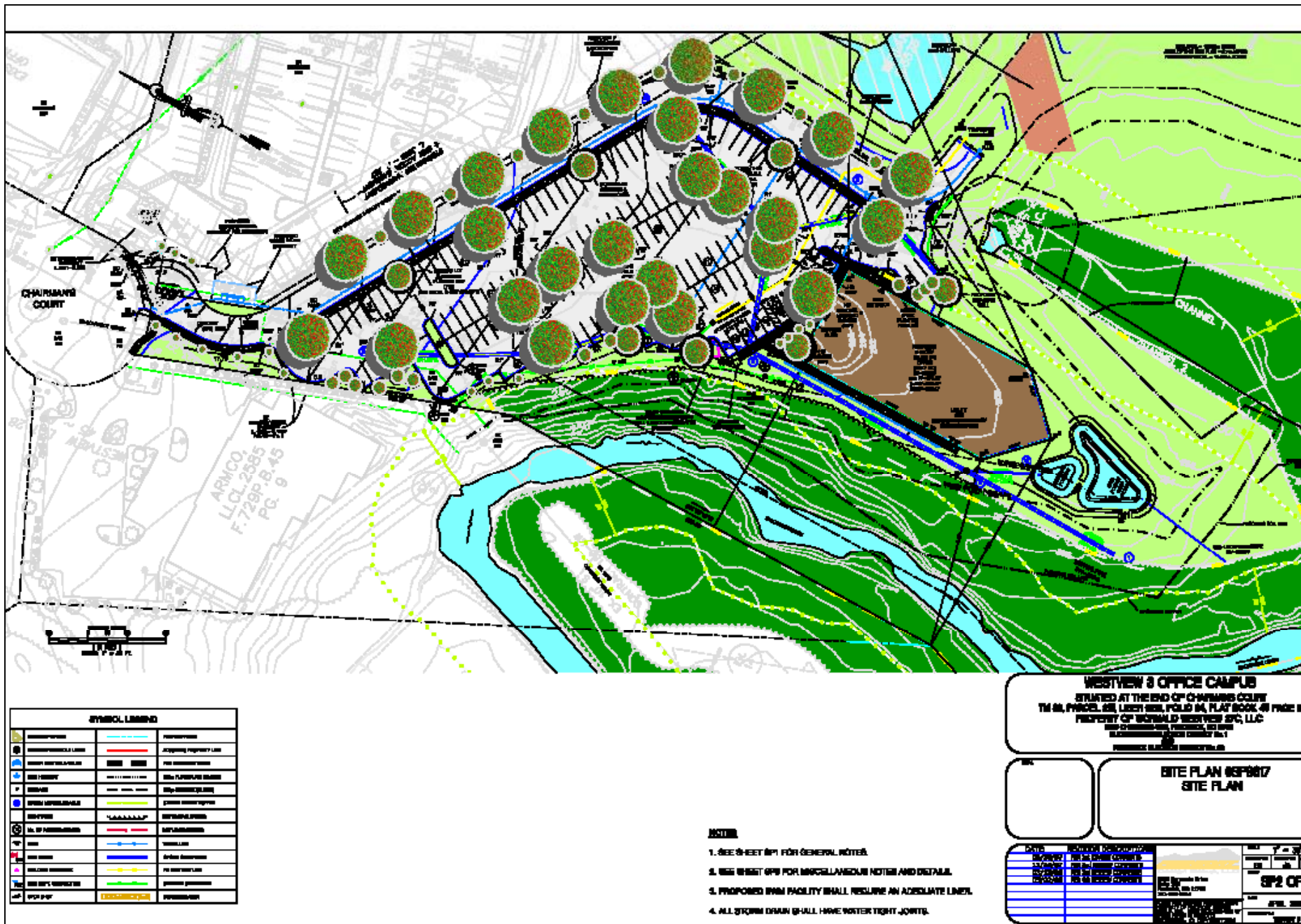


Westview 3 Office Campus

- ❑ Request: Site Plan Approval
- ❑ Location: Terminus of Chairman's Ct.
- ❑ Total Use: Office building (43,200 sq. ft.)
- ❑ Zoned: MXD
- ❑ Applicant: Wormald Westview 27C, LLC
- ❑ Engineer: Piedmont Design Group

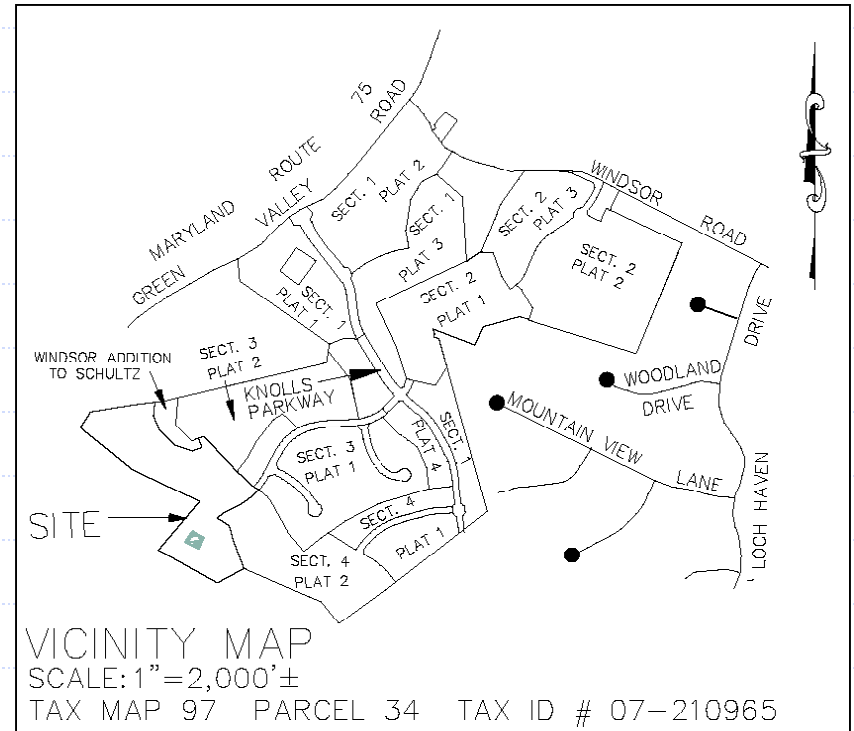


Westview 3 Office Campus



Knolls of Windsor

- ❑ Request: Preliminary Plat Approval
- ❑ Location: Terminus of Windsor Rd.
- ❑ Total Use: 16 single family lots
- ❑ Zoned: R-1
- ❑ Applicant: Buckeye, Inc.
- ❑ Engineer: Harris, Smariga & Associates, Inc.



Knolls of Windsor

