

Green Infrastructure in Frederick County

Frederick County Green Infrastructure Advisory Group

Meeting #1

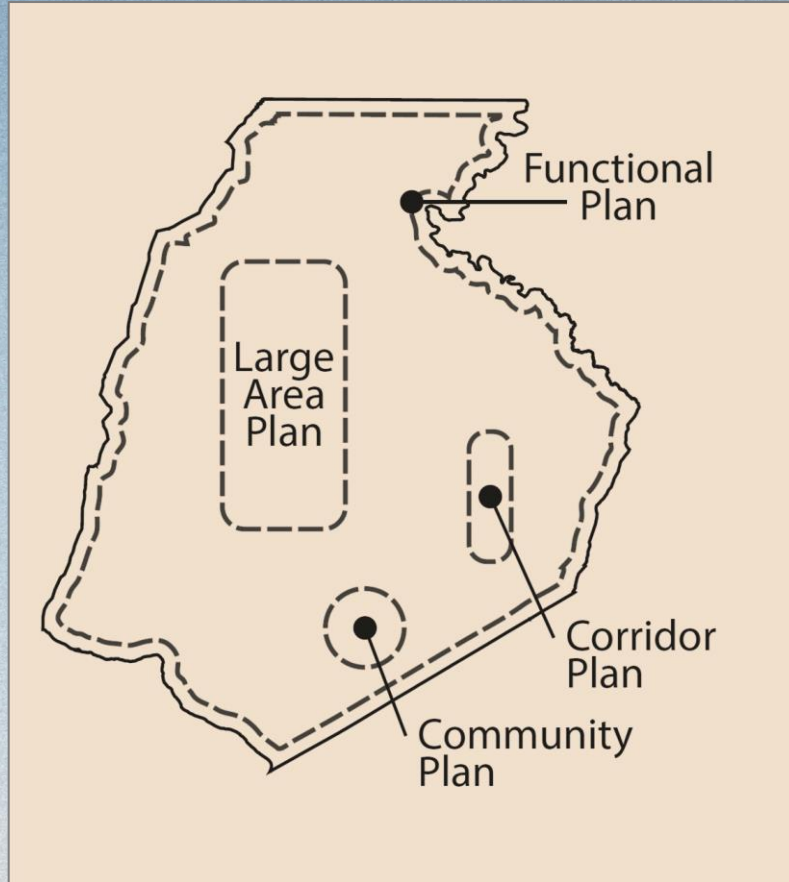
October 24, 2024



Division of
Planning and Permitting

Frederick County
Government Maryland

Green Infrastructure Plan Type ...



- The Green Infrastructure Plan is a Functional Plan in the Livable Frederick Master Plan (LFMP) Framework
- Creation of the Plan was identified as an Initiative (4.1.1.1) in support of the Core Vision for Our Environment (LFMP)
- Also identified in the County Executive's 2023 Transition Report and the 2023-2026 Livable Frederick Work Program



... & Purpose

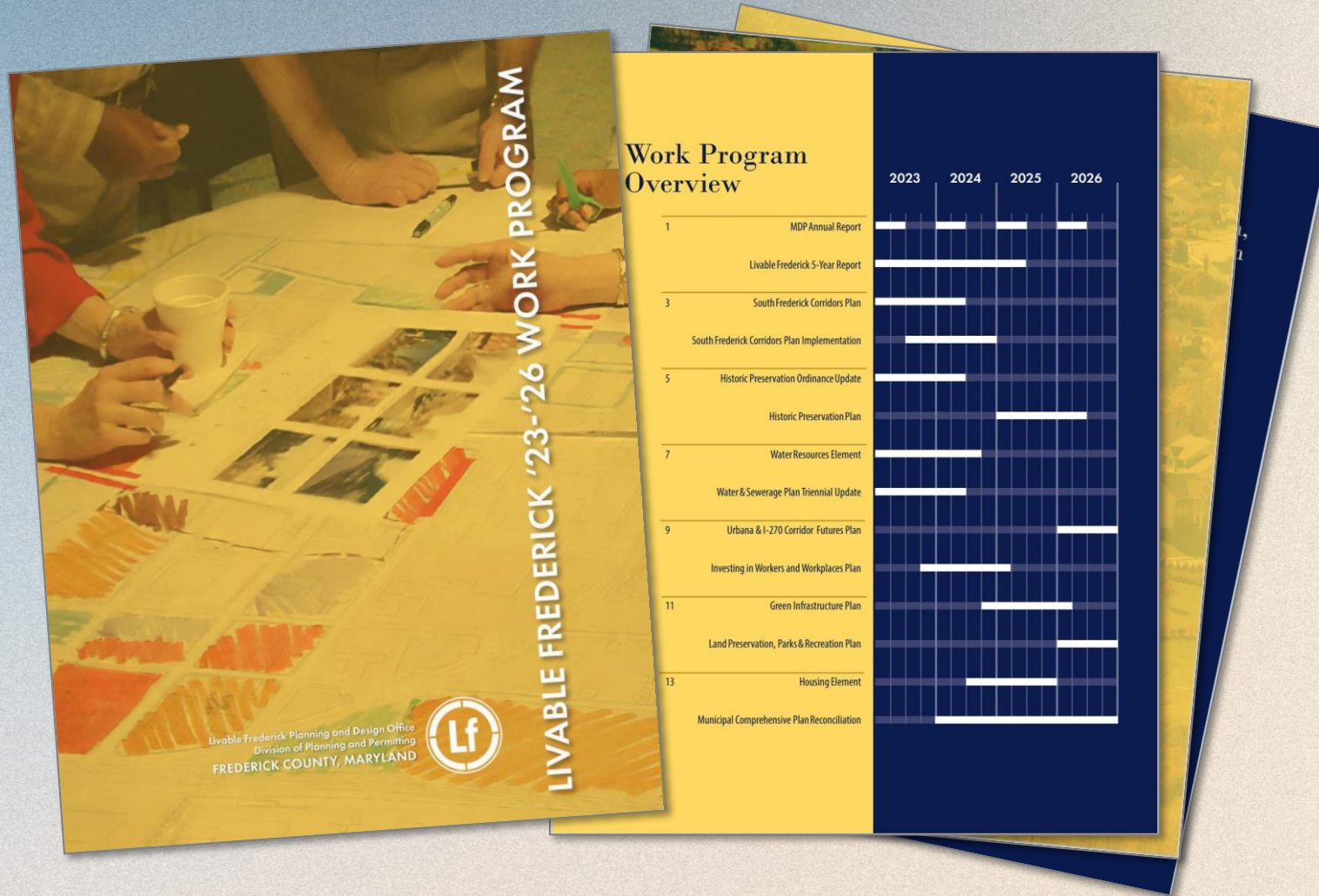
- support a comprehensive greenway corridors and infrastructure plan which should connect green infrastructure hubs,
- reduce fragmentation of natural areas,
- provide more options for wildlife migration,
- adapt as climate changes,
- identify forest conservation and afforestation opportunities,
- reduce vehicle miles traveled,
- and increase outdoor recreation opportunities for low-to-moderate-income families.



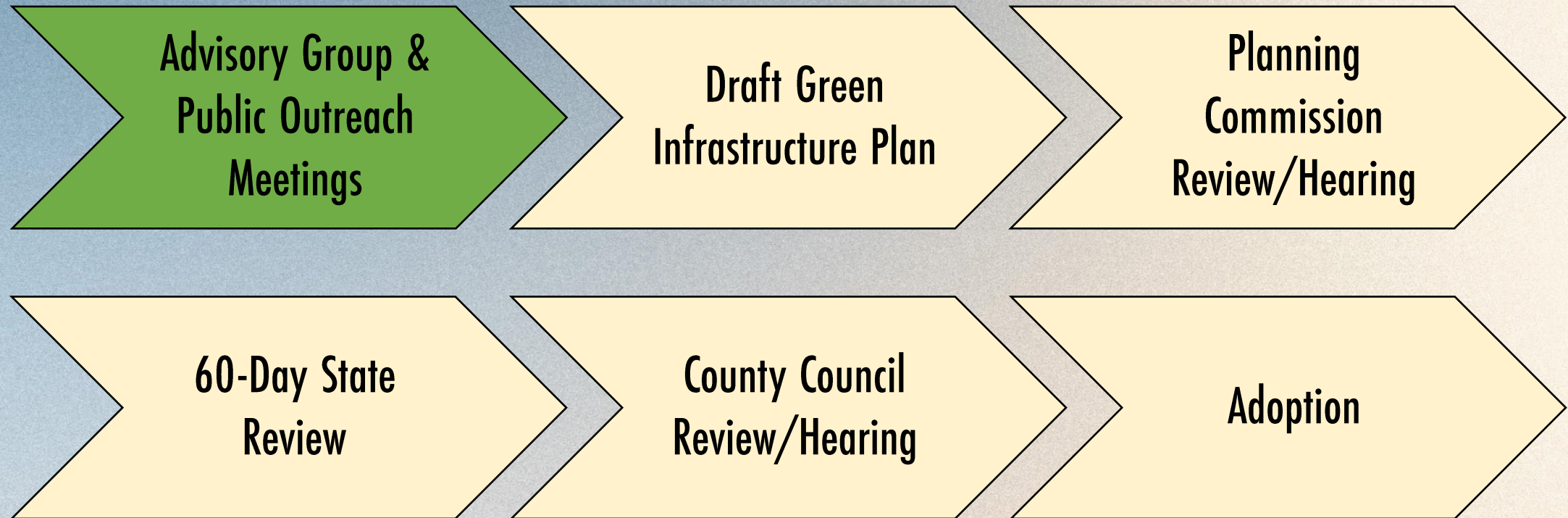
Division of
Planning and Permitting

Frederick County
Government Maryland

Livable Frederick Work Program



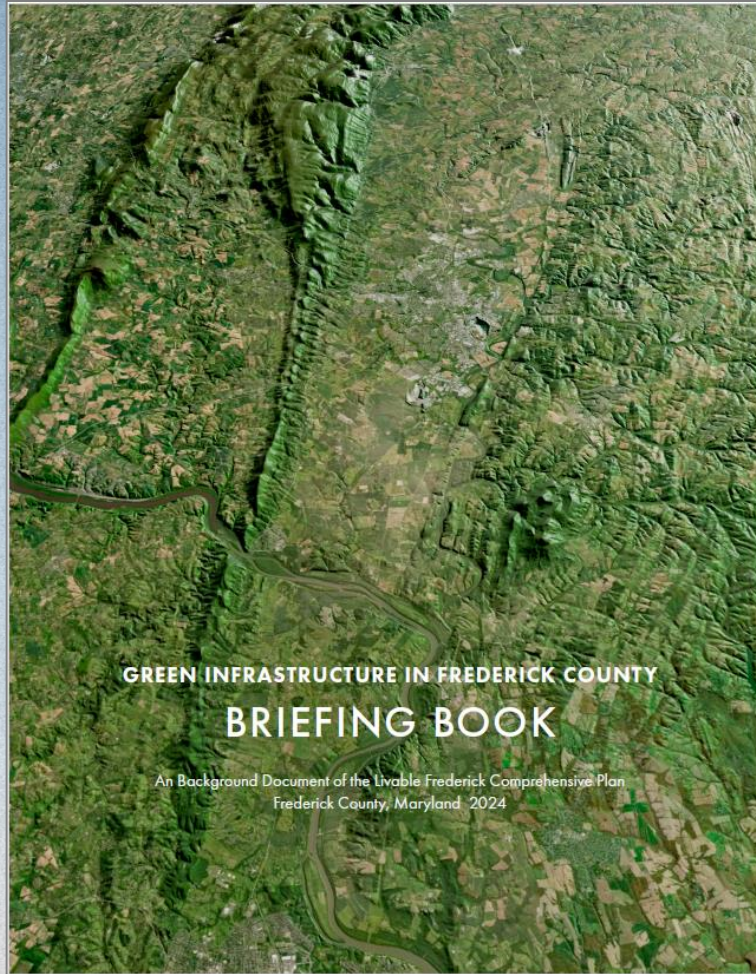
Green Infrastructure Process



Division of
Planning and Permitting

Frederick County
Government Maryland

Green Infrastructure Briefing Book



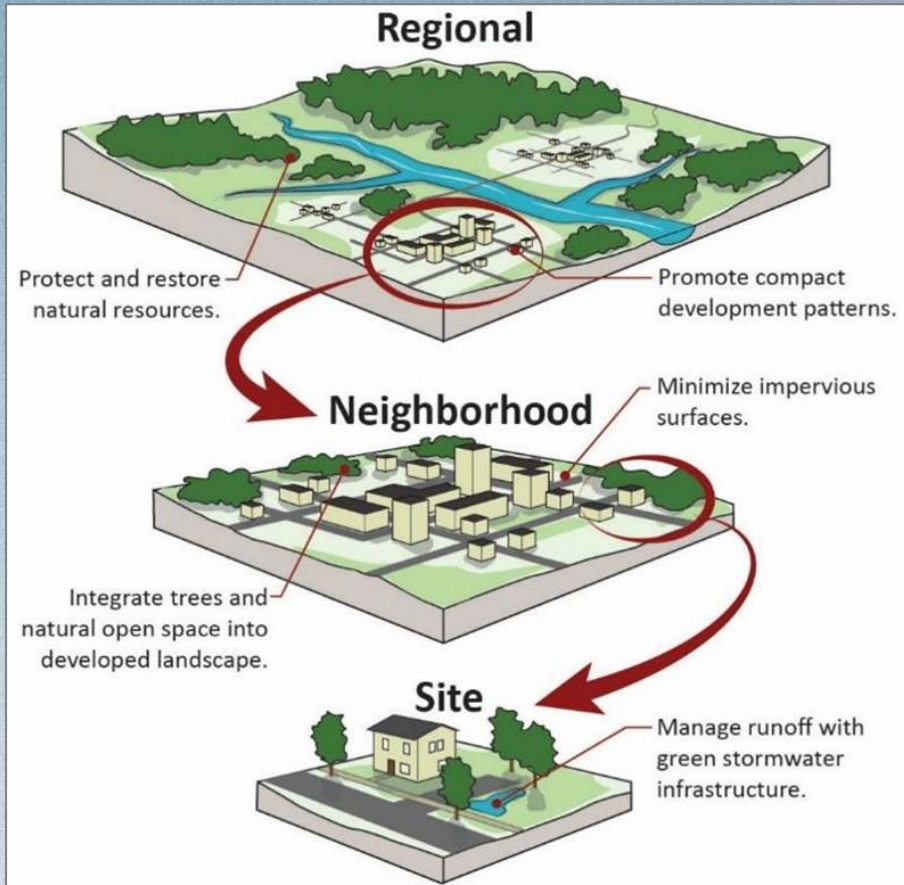
- Intended to foster discussion among the Advisory Group and the public
- Address the criteria set forth in the LFMP, Transition Report, and Work Program
- Highlight potential additional topics like impacts associated with climate change, access to nature and green space, and the potential for agricultural lands to provide green infrastructure services



Division of
Planning and Permitting

Frederick County
Government Maryland

What is Green Infrastructure?



"[A] strategically planned and managed network of wilderness, parks, greenways, conservation easements, and working lands with conservation value that supports native species, maintains ecological processes, sustains air and water resources, and contributes to the health and quality of life for America's communities and people."

Benedict, M. A., McMahon, E. T., & Fund, C. (2006). Green infrastructure: Linking Landscapes and Communities.

Image Source: https://www.epa.gov/system/files/documents/2024-07/basics_of_green_infrastructure.pptx



Division of
Planning and Permitting

Frederick County
Government

Origins of Green Infrastructure in Maryland

- Formation of the Maryland Greenways Commission in July 1991 and, again, in 1995 (Executive Order 01.01.1991.24; Executive Order 01.01.1995.27)
- Maryland Forest Conservation Action in 1991
- Maryland Economic Growth, Resource Protection, and Planning Act of 1992 (Maryland Planning Act), “Sensitive Areas,” and the Sensitive Areas Element
- Maryland GreenPrint Program established in 2001
- Maryland Green Infrastructure Assessment in 2021



Sensitive Areas in Frederick County

Sensitive Area Type	Conservation Program / Associated Ordinance
A stream or wetland, and its buffers	Waterbody buffers
A 100-year floodplain	Floodplain District
Habitat of rare, threatened, or endangered species	Natural Resources Land Use Designation, Resource Conservation Zoning, Forest Resources Ordinance (FRO)
A steep slope (25%+)	Resource Conservation Zoning, Forest Resources Ordinance (FRO)
Agricultural or forest land intended for resource protection or conservation	Agricultural Preservation, Creek ReLeaf, Forest Resources Ordinance (FRO), Historic Preservation Ordinance, Land Trusts
Any other area in need of special protection, as determined in a plan	One or more of the programs listed above



Division of
Planning and Permitting

Frederick County
Government Maryland

Maryland Green Infrastructure (a.k.a. HCN)

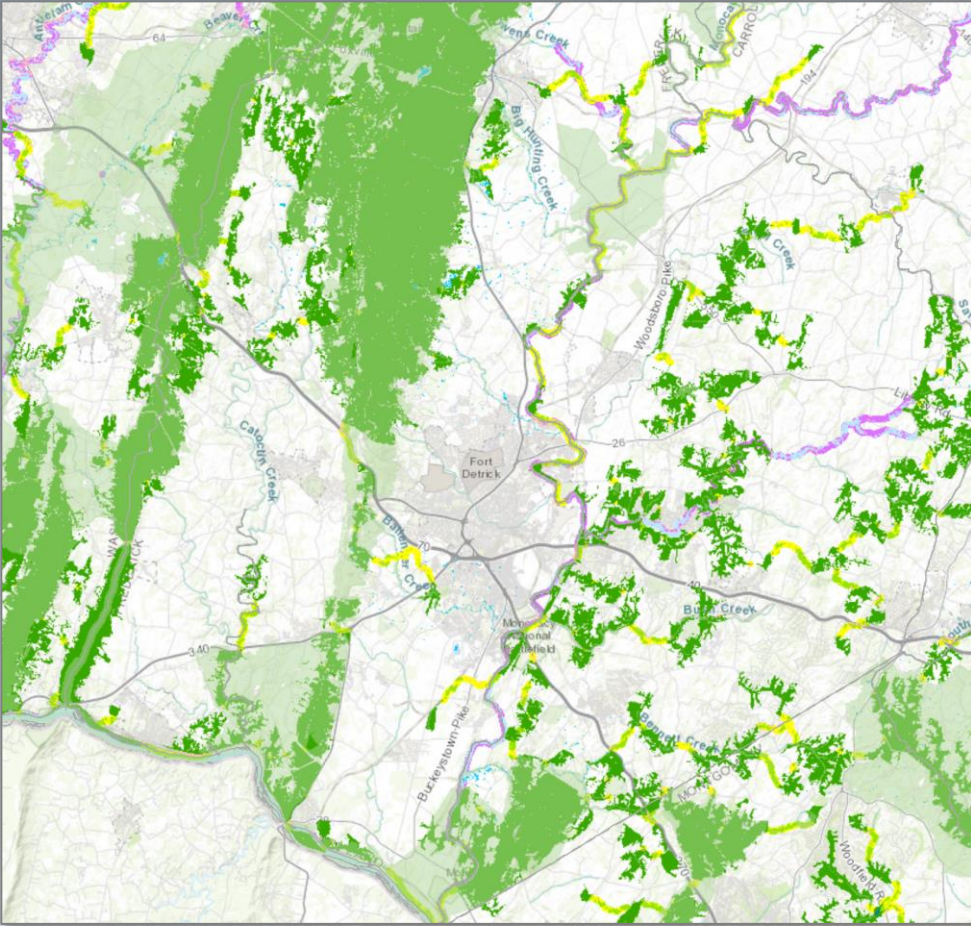


Image Source: <https://geodata.md.gov/greenprint/>

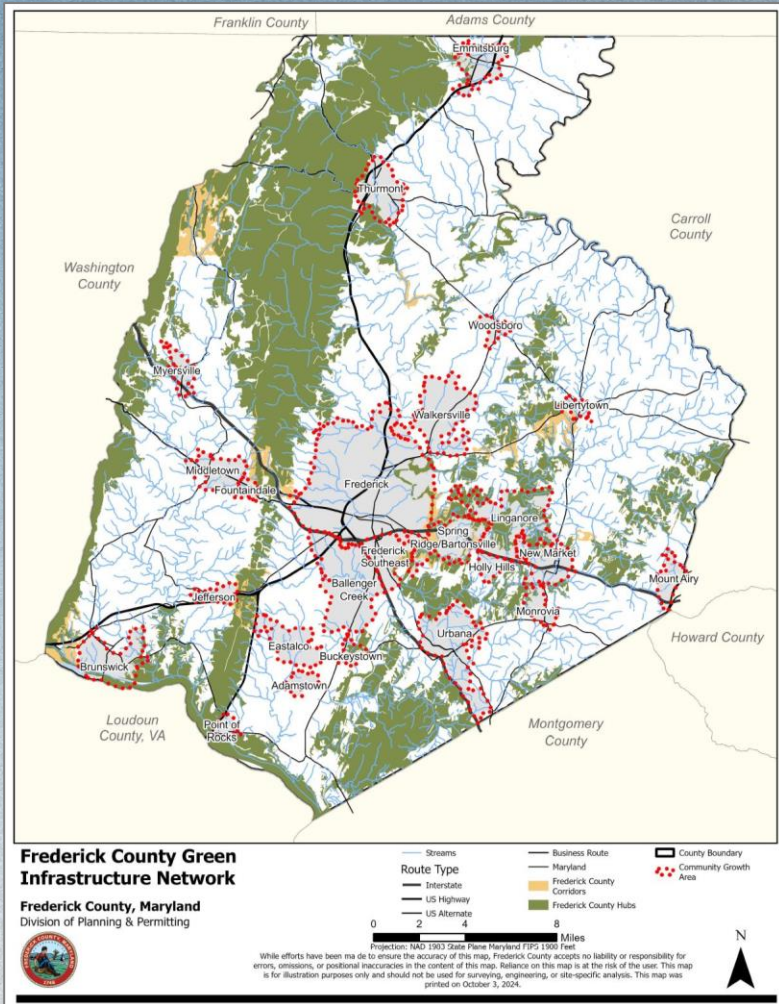
- GreenPrint mapping first developed in 2001 to denote the most environmentally sensitive areas
- Subsequently expanded to include additional preservation programs
- Green Infrastructure Assessment in 2021
- “Rebranded” as Habitat Connectivity Network in August of 2024



Division of
Planning and Permitting

Frederick County
Government Maryland

Frederick County Green Infrastructure



- Developed in 2014 with the support of EPA Region III and Maryland DNR Forest Service
- Differed from State of Maryland mapping at the time due to a lowered minimum size threshold for hubs and the addition of other local data
- Currently used by the Division of Energy and Environment as one of several ranking criteria for prioritizing stream restoration work (MS-4 compliance)



Visioning & Values

GOOD HEALTH *is fundamental to our quality of life.*
*We value a **HEALTHY ENVIRONMENT**, clean air,
water, and green energy, and are good stewards of our
environmental & natural resources.*

*Frederick County planning enhances our towns
and neighborhoods, while preserving what we love:*
**FARMS, HISTORY, OUTDOOR ACTIVITIES, and THE
ENVIRONMENT.**

Livable Frederick Master Plan (2019)

F. Develop a Greenway Corridors & Infrastructure Plan

To build on the framework of the Livable Frederick Master Plan, the County Executive should develop a comprehensive greenway corridors and infrastructure plan which should connect green infrastructure hubs, reduce fragmentation of natural areas, provide more options for wildlife migration, adapt as climate changes, identify forest conservation and afforestation opportunities, reduce vehicle miles traveled, and increase outdoor recreation opportunities for low- to moderate-income families.

Transition Report (2023)

Green Infrastructure Plan

Functional Plan

The Green Infrastructure Plan will focus on the preservation, enhancement, and connectivity of the County's natural and environmentally-sensitive areas. The plan will identify existing large-scale, ecologically-significant habitats (or hubs) and environmentally-important linkages (or corridors) that can be utilized to connect hubs. Corridors and hubs will comprise a Green Infrastructure Network that provides a wide array of benefits to people and wildlife, such as sustaining clean air and water, storing and cycling nutrients, filtering and cooling streams and aquifers, conserving and generating soils, sequestering carbon, mitigating storms and flooding, providing habitat and migratory routes, and facilitating recreational opportunities. The Green Infrastructure Plan will also consider issues related to the equitable distribution of access to nature and the potential for green infrastructure to mitigate the environmental impacts associated with growing communities.



Livable Frederick Work Program (2024)

Advisory Group Meeting Schedule:

Next Meeting: November 7, 2024

2:00 PM – 4:00 PM

Basement Conference Room, 30 N. Market Street

Staff Contact: Andrew Stine, Livable Frederick Principal Planner I

Phone: (301) 600-1485

Email: ASTine@FrederickCountyMD.gov

Green Infrastructure Website: FrederickCountyMD.gov/GreenInfrastructurePlan



Division of
Planning and Permitting

Frederick County
Government Maryland